

Product datasheet for **RG206343**

ALG1 (NM_019109) Human Tagged ORF Clone

Product data:

Product Type:	Expression Plasmids
Product Name:	ALG1 (NM_019109) Human Tagged ORF Clone
Tag:	TurboGFP
Symbol:	ALG1
Synonyms:	CDG1K; hMat-1; HMAT1; HMT-1; HMT1; Mat-1; MT-1
Mammalian Cell Selection:	Neomycin
Vector:	pCMV6-AC-GFP (PS100010)
E. coli Selection:	Ampicillin (100 ug/mL)



[View online »](#)

ORF Nucleotide Sequence:

>RG206343 representing NM_019109
 Red=Cloning site Blue=ORF Green=Tags(s)

TTTTGTAATACGACTCACTATAGGGCGGCCGGAATTCGTCGACTGGATCCGGTACCGAGGAGATCTGCC
 GCC**GCGATCGCC**

ATGGCGCCTCATGCTTGGTCTGCTGGCGCTGTGTCTGCTGCTGCCGCTGCTGCTGGGAGGATGGA
 AGCGCTGGCGCCGGGGGGGGCGGCCCGCATGTAGTAGCGGTGGTGTGGGCGACGTGGGCCGAGCCC
 CCGTATGCAGTACCACGCGCTGTCGTTGGCCATGCACGGCTTCTCGGTGACCCTCTGGGTTCTGCAAC
 TCCAAACCCCATGATGAGCTCTTGCAGAACAACAGAATTCAGATTGTGGGTTGACAGAACTTCAGAGTC
 TTGCAGTTGGGCCCGAGTTTTCCAGTACGGAGTCAAAGTTGACTTCAGGCTATGACTTGTGTGAA
 GTTGATGTGGAGGGAGCCAGGTGCCTATATCTTCTCCAGAACCCCGAGTCTGCCTAGCATTGCTGTC
 TGCTGGTTCGTTGGCTGCCTTTGTGAAGCAAGCTCGTCATTGACTGGCACAACATGGCTACTCCATCA
 TGGGTCTGGTGCATGGCCCAACCATCCCCTCGTTCGCTGGCCAAGTGTACGAGAAGTCTTTGGGCG
 CCTGTCCACCTGAACCTGTGTGTACCAATGCTATGCGAGAAGACCTGGCGGATAACTGGCACATCAGG
 GCTGTGACCGTCTACGACAAGCCCGCATCTTTCTTTAAAGAGACACCTCTGGACCTGCAGCACCGGCTCT
 TCATGAAGCTGGGAGCATGCACTCTCCGTTACAGGGCCCGCTCAGAACCTGAGGACCCAGTCACGGAGCG
 GTCGGCCTTACGGAGCGGGATGCTGGGAGCGGGCTGGTACGCGTCTCCGTGAGCGGCCAGCCCTGCTG
 GTCAGCAGCAGAGCTGGACAGAGGACGAAGACTTCTCCATCCTGCTGGCAGCTTTAGAAAAGTTTGAAC
 AACTGACTCTTGATGGACACAACCTTCTTCTCTCGTCTGTGTGATAACAGGCAAAGGGCCTATGAGGGA
 GTATTATAGCCGCTCATCCACCAGAAGCACTCCAGCACATCCAGGTCTGCACCCCTGGCTGGAGGCC
 GAGGACTACCCCTGCTTCTAGGTCGCGGACCTGGGTGTCTGTCTGCACACGTCCTCCAGTGGCCTGG
 ACCTGCCATGAAGTGGTGGACATGTTCCGGTCTGTTTGCCTGTGTGTGTAACCTCAAGTGT
 ACATGAGCTGGTGAACATGAAGAAAATGGCCTGGTCTTTGAGGACTCAGAGGAACCTGGCAGCTCAGCTG
 CAGATGCTTTTCTCAAATTTCTGATCCTGCGGGCAAGCTAAACCAGTTCGGGAAGAACCTGCGGGAGT
 CGCAGCAGCTCCGATGGGATGAGAGCTGGGTGCGGACTGTGCTCCCTTTGGTTATGGACACA

AG**CGGACCG**ACGCGTACGCGGCCGCTCGAG - GFP Tag - GTTTAA

Protein Sequence:

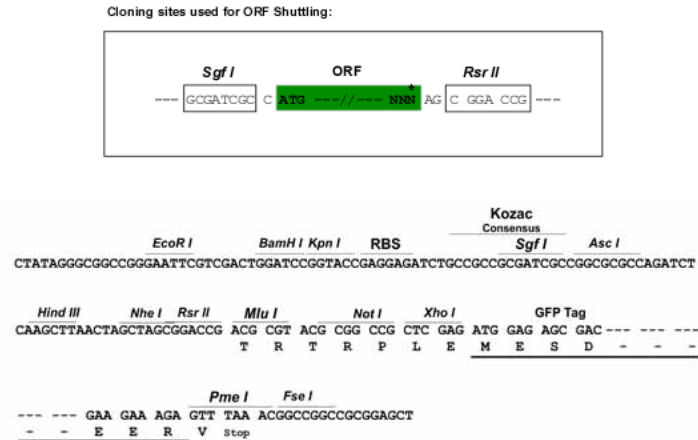
>RG206343 representing NM_019109
 Red=Cloning site Green=Tags(s)

MAASCLVLLALCLLLPLLLLGGWKRWRRGRAARHVAVVLGDVGRSPRMQYHALSLAMHGFVSTLLGFCN
 SKPHDELLQNNRIQIVGLTELQSLAVGPRVFQYGVKVVLLQAMYLLWKLWREPGAYIFLQNPPLPSIAV
 CWFVGCCLCGSKLVIDWHNYGYSIMGLVHGPNHPLVLLAKWYKFFGRLSHLNLVNTAMREDLADNWHIR
 AVTVYDKPASFFKETPLDLQHRLFMKLGSMSHSPFRARSEPEDPVTERSAFTERDAGSGLVTRLRERPALL
 VSSTSWTEDEDFSIILAALEKFEQLTLDGHNLPVLCVITGKGPMPREYYSRLIHQKHFQHIQVCTPWLEA
 EDYPLLLGSADLGVCLHTSSSGLDLPKVVDMFGCCLPVCAVNFKCLHELKHEENGLVFEDSEELAAQL
 QMLFSNFPDPAGKLNQFRKNLRESQQLRWDESWVRTVPLVMDT

SGPTRRRLE - GFP Tag - V

Restriction Sites:

Sgfl-RsrII

Cloning Scheme:


ACCN: NM_019109

ORF Size: 1392 bp

OTI Disclaimer: The molecular sequence of this clone aligns with the gene accession number as a point of reference only. However, individual transcript sequences of the same gene can differ through naturally occurring variations (e.g. polymorphisms), each with its own valid existence. This clone is substantially in agreement with the reference, but a complete review of all prevailing variants is recommended prior to use. [More info](#)

OTI Annotation: This clone was engineered to express the complete ORF with an expression tag. Expression varies depending on the nature of the gene.

Components: The ORF clone is ion-exchange column purified and shipped in a 2D barcoded Matrix tube containing 10ug of transfection-ready, dried plasmid DNA (reconstitute with 100 ul of water).

Reconstitution Method:

1. Centrifuge at 5,000xg for 5min.
2. Carefully open the tube and add 100ul of sterile water to dissolve the DNA.
3. Close the tube and incubate for 10 minutes at room temperature.
4. Briefly vortex the tube and then do a quick spin (less than 5000xg) to concentrate the liquid at the bottom.
5. Store the suspended plasmid at -20°C. The DNA is stable for at least one year from date of shipping when stored at -20°C.

Note: Plasmids are not sterile. For experiments where strict sterility is required, filtration with 0.22um filter is required.

RefSeq: [NM_019109.2](#)

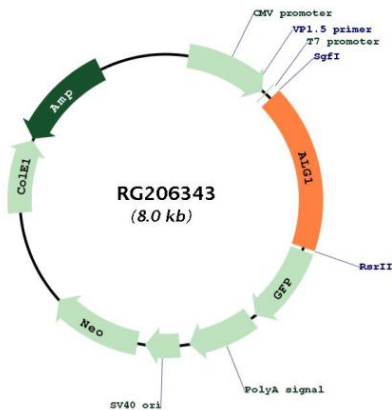
RefSeq Size: 2149 bp

RefSeq ORF: 1395 bp

Locus ID: 56052

UniProt ID: [Q9BT22](#)
Cytogenetics: 16p13.3
Protein Families: Transmembrane
Protein Pathways: Metabolic pathways, N-Glycan biosynthesis
Gene Summary: The enzyme encoded by this gene catalyzes the first mannosylation step in the biosynthesis of lipid-linked oligosaccharides. This gene is mutated in congenital disorder of glycosylation type I_k. [provided by RefSeq, Dec 2008]

Product images:



Circular map for RG206343