

Product datasheet for **RG206341**

Zfp219 (ZNF219) (NM_016423) Human Tagged ORF Clone

Product data:

Product Type:	Expression Plasmids
Product Name:	Zfp219 (ZNF219) (NM_016423) Human Tagged ORF Clone
Tag:	TurboGFP
Symbol:	ZNF219
Synonyms:	ZFP219
Mammalian Cell Selection:	Neomycin
Vector:	pCMV6-AC-GFP (PS100010)
E. coli Selection:	Ampicillin (100 ug/mL)



[View online »](#)

ORF Nucleotide Sequence:

>RG206341 representing NM_016423
 Red=Cloning site Blue=ORF Green=Tags(s)

TTTTGTAATACGACTCACTATAGGGCGGCCGGAATTCGTCGACTGGATCCGGTACCGAGGAGATCTGCC
 GCC**CGGATCGCC**

ATGGAGGGCTCAGTCCCGCGCCCGAGCGGCCACTTAGCGCCGTCGCCCGGCTTTCGACGGCGAGC
 TGGATCTGCAGCGATACTCCAACGGGCCAGCCGTGAGCGCAGGGTCGCTCGGGATGGGAGCGGTGAGCTG
 GTCTGAGAGTCGTGCAGGCGAACGGCGCTTCCCCTGCCCTGTATGCGGGAAGCGCTTCCGCTTCAACTCT
 ATCCTTGTCTTGCACCTGCGGGCGCACCCAGGAGCCAGGCCCTCCAGTGCCCTCACTGCGGCCACCGCG
 CGGCGCAGCGGGCTCTGCTGCGCTCGCACCTGCGCACACACCAGCCGAGCGCCACGTAGTCTGCTGC
 ACGCTGTTGCTGGAGTTGGAAGAGCGCGCTACTACGCGAGGCCCGACTGGGGAGAGCCCGAAGCTCA
 GGGGGCATGCAGGCCACCCCTGCCACTGAGGGTCTGGCGCGGCCCGAGGCTCCTTCATCGTCCGCCCTCC
 GTTGCCCTACTGCAAAGCAAGTTTCGACCTCGGCGGAGCGCAACGCCACCTGCACATCCTGCATAG
 GCCCTGGAAGTGGGCCCTGTGCAGTTTCGCTCCAGCCAGGAGGAGGAGCTGCTGCACCACAGCCTGACG
 GCCACCGGGGCTCCCGAGCGTCCCCTGGCGGCCACCTCCGCTGCGCTCCGCCTCAGCCTCAGCCTCAGC
 CTCCACCCAGCCGAACCCAGATCAGTCCCCAGCCGGAGCCGGAGCCGGAGCCCGAACGTGAGGCAAC
 CCCGACCACAGCTCCTGCCGCTCCCGAGGAGCCCCAGCGCTCCGGAGTTCCGCTGCCAAGTGTGCGGC
 CAGAGCTTTACACAGTCTTGTTTCTCAAGGGCCACATGCGTAAGCACAAGGCTCCTTCGATCATGCGT
 GTCCGGTGTGCGGCCGCTGCTTCAAGGAGCCCTGGTTCCTTAAGAACCACATGAAGGTGCACGCCAGCAA
 GCTGGGCCACTGCGTCCCCGGGGCTGCCTCCGGGCTGCCCGCGCCCCCAGCCTCCTGACCTCGGC
 CTGCTGGCCTATGAGCCGTTGGGCCAGCGCTCCTTTGGCCCCGGCTCCACCCCGCCGAGCGCCGTG
 AGCCCCGAGCCTTTGGGCTACCTGAGCTGCGAGCTGGCGAGGGCCGGCCCAACGGCGAGGGTGTGA
 GCCCGGTCCCGGCCGACGCTTCGGAGGCTTCCGCCCGCTGTCTCTGCTCTCCCGGCCCGGGCTCGCCGG
 CACCGTGCAGGAGCCTGAGGAAGAAGAGGAGGTGGTGGAGGCCGAGGAGGAAACCTGGGCCCGGGCA
 GGTCTGCTGGGCTCTCTGGCTTCCCTGCACCCGCGCCCGGGTGGAGGACCGGGCACTCTGCCTCTGCTGC
 TGGGGCCAGGCAAGATCGACCGCCACGCAGGAAGAGAATGGGCTGTTGGTTGGAGGGACCCGGCCTGAA
 GGGGGCCGGGGCCACCGCAAGGATTGTCTTTCTGCGGAAAATCTTCCGCTCAGCACATCACCTCA
 AAGTGCATCTGCGAGTGCACACAGGCGAGCGGCCCTACAAGTGTCCGACTGCGACTACGCGGGCACCCA
 GTCCGGCTCGCTCAAGTATCACCTACAGCGCCACCACCGGAGCAGAGGAGCGGGCCGGCCCCGGGCCA
 CCCCCGAGCCACCGCTCCTTCCAGCGGGGTTCCGGCCCGCAATCTGGAGCCAAGCCGTCTCCGCAGC
 CTGCGACCTGGTGGAGGGCGCCTCAAGTCCCCGGCCTCCTTCTAGCGGTGCTGGCCGGGGTCCCGTCCG
 GAAGCCCGCCAGCCCTGGGAGGACCTGCGCAACGGGCGAGGCGGTGAGGCCGAACCCCTGGACCTGTCC
 TTGCGGGCAGGGCCGGGAGGCGAGGCGGGGCTGGGGGTGCCCTCCACCCTGCCTCTTCTGCCGTTCCG
 CCACTGGAGCCCCAGAGCTCATGGCCTTGACCTTCAAGTGCACCACAGCCCGCGGGCTAGGGGCCGCCG
 GCCACCCAGGCTGACGCGTCCCCGCCCTATGCCCGAGTACCATCAGGAGAGACCCTCCAGTCCCTTCG
 CAGGAAGGGGAGGAGGCTCCGGCTGTCCAGACCCGGAGAGGCAGGGCTGGGGGGCAAGAACGG

AG**CGGACCG**ACGCGTACGCGGCCGCTCGAG - GFP Tag - GTTTAA

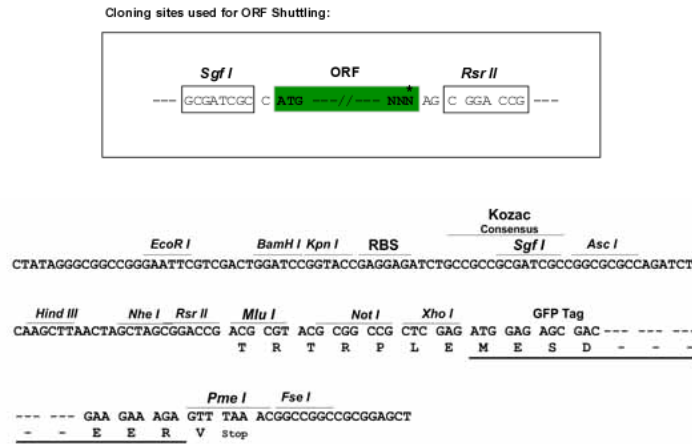
Protein Sequence: >RG206341 representing NM_016423
 Red=Cloning site Green=Tags(s)

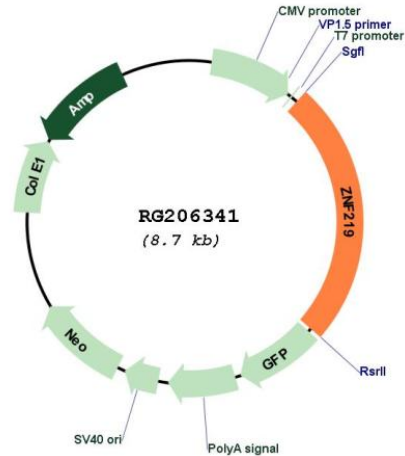
```
MEGSRPRAPSGHLAPSPPAFDGELDLQRYSNPVAVSAGSLGMGAVSWSES RAGERRFPCVCGKRFNFNS
ILALHLRAHPGAQAFQCPHCGRHAAQRALLRSHLRTHQPERPRSPAARLLELEERALLREARLGRARSS
GGMQATPATEGLARPQAPSSSAFRCPYCKGKFRTSAERERHLHILHRPWKCGLCFSGSSQEEELLHHSLT
AHGAPERLAATSAAPPPQPQPQPPEPRSVQPPEPEPEPEREATPTTAPAAPEEPPAPPEFRCQVCG
QSFTQSWFLKGHMRKHKASFHDHACPVCGRCFKEPWFLKNHMKVHASKLGPLRAPGPASGPAPAPQPPDLG
LLAYEPLGPALLLAPAPTPAERREPPSLLGYLSLRAGEGRPNGEAEPGPGRSFGGFRPLSSALPARARR
HRAEEPEEEEEVVEAEEETWARGRSLGSLASLHPRPGEGPGHSASAAQAARSTATQEENGLLVGGTRPE
GGRGATGKDCPFCKGSAHHLKVHLRVHTGERPYKCPHCDYAGTQSGSLKYHLQRHREQRSAGGPGP
PPEPPPSQSGSAPQSGAKPSPQATWVEGASSRPPSSGAGPGSRRKPASPGRTLNRNGRGEAEPLDLS
LRAGPGGEAGPGGALHRCLFCPFATGAPELMALHLQVHHSRRRARRRPPQADASPPYARVPSGETPPSPS
QEGEEGSLSRPGEAGLGGQER
```

SGPTRRRLE - GFP Tag - V

Restriction Sites: SgfI-RsrII

Cloning Scheme:



Plasmid Map:


ACCN: NM_016423

ORF Size: 2166 bp

OTI Disclaimer: The molecular sequence of this clone aligns with the gene accession number as a point of reference only. However, individual transcript sequences of the same gene can differ through naturally occurring variations (e.g. polymorphisms), each with its own valid existence. This clone is substantially in agreement with the reference, but a complete review of all prevailing variants is recommended prior to use. [More info](#)

OTI Annotation: This clone was engineered to express the complete ORF with an expression tag. Expression varies depending on the nature of the gene.

Components: The ORF clone is ion-exchange column purified and shipped in a 2D barcoded Matrix tube containing 10ug of transfection-ready, dried plasmid DNA (reconstitute with 100 ul of water).

Reconstitution Method:

1. Centrifuge at 5,000xg for 5min.
2. Carefully open the tube and add 100ul of sterile water to dissolve the DNA.
3. Close the tube and incubate for 10 minutes at room temperature.
4. Briefly vortex the tube and then do a quick spin (less than 5000xg) to concentrate the liquid at the bottom.
5. Store the suspended plasmid at -20°C. The DNA is stable for at least one year from date of shipping when stored at -20°C.

RefSeq: [NM_016423.1](#), [NP_057507.1](#)

RefSeq Size: 3039 bp

RefSeq ORF: 2169 bp

Locus ID: 51222

UniProt ID: [Q9P2Y4](#)

Cytogenetics: 14q11.2

Protein Families: Transcription Factors

Gene Summary: This gene is a member of the Kruppel-like zinc finger gene family. The encoded protein functions as a transcriptional repressor of the high mobility group nucleosome binding domain 1 protein, which is associated with transcriptionally active chromatin. [provided by RefSeq, Apr 2017]