

Product datasheet for **RG206339**

TUBB4B (NM_006088) Human Tagged ORF Clone

Product data:

Product Type:	Expression Plasmids
Product Name:	TUBB4B (NM_006088) Human Tagged ORF Clone
Tag:	TurboGFP
Symbol:	TUBB4B
Synonyms:	Beta2; LCAEOD; TUBB2; TUBB2C
Mammalian Cell Selection:	Neomycin
Vector:	pCMV6-AC-GFP (PS100010)
E. coli Selection:	Ampicillin (100 ug/mL)



[View online »](#)

ORF Nucleotide Sequence:

>RG206339 representing NM_006088
 Red=Cloning site Blue=ORF Green=Tags(s)

TTTTGTAATACGACTCACTATAGGGCGGCCGGAATTCGTCGACTGGATCCGGTACCGAGGAGATCTGCC
 GCC**CGCATCGCC**

ATGAGGAAATCGTGCCTTGCAGGCCGGCAGTGCAGCAACCAATCGGCGCAAGTTTTGGGAGGTGA
 TCAGCGATGAGCACGGCATCGACCCACGGGCACCTACCACGGGACAGCGACCTGCAGCTGGAACGCAT
 CAACGTGTACTACAATGAGGCCACCGCGGCAAGTACGTGCCCGCGCCGTGCTCGTGGATCTGGAGCCC
 GGCACCATGGACTCCGTGCGCTCGGGGCCCTTCGGGCAGATCTTCGGCCGGACAACCTCGTTTTCGGT
 AGAGTGGTGTGGGAACAACGGGCAAGGGGCACTACACAGAAGGCGCGGAGCTGGTGGACTCGGTGCT
 GGATGTTGTGAGAAAGGAGGCTGAGAGCTGTGACTGCCTGCAGGGTTCCAGCTGACCCACTCCCTGGGT
 GGGGGACTGGTCTGGGATGGTACCCTCCTCATCAGCAAGTCCGGGAGGAGTACCCAGACAGGATCA
 TGAACACGTTTAGTGTGGTGCCTTCGCCAAAGTGTGAGACAGTGGTGGAGCCCTACAACGCCACCT
 CTCAGTCCACAGCTCGTAGAAAACACAGACGAGACCTACTGCATTGATAACGAAGCTCTCTACGACATT
 TGCTTCAGAACCTAAAGCTGACCACGCCACCTATGGTGACCTGAACAACCTGGTGTCTGCTACCATGA
 GTGGGGTCAACCTGCCTGCGCTTCCCAGGCCAGCTCAATGCTGACCTGCGGAAGCTGGCTGTGAACAT
 GGTCCCCTTCCCGGCTGCACTTCTTCATGCCCGGCTTTCGCCCACTGACCAGCCGGGGCAGCCAGCAG
 TACCGGGCGTGACCGTGCCCGAGCTCACCCAGCAGATGTTTGTGATGCCAAGAACATGATGGCTGCCTGCG
 ACCCCCGCATGGCCGCTACCTGACGGTTGCCCGCGTGTTCAGGGGCCGATGTCATGAAGGAGGTGGA
 TGAGCAATGCTTAATGTCCAAAACAAAACAGCAGCTATTTTGTGAGTGGATCCCCAACAAATGTGAAA
 ACGGCTGTCTGTGACATCCCACCTCGGGGGCTAAAAATGTCCGCCACCTCATTGGCAACAGCACGGCCA
 TCCAGGAGCTGTTCAAGCGCATCTCCGAGCAGTTCACGGCCATGTTCCGGCGCAAGGCCTCCTGCAGT
 GTACACGGGCGAGGGCATGGACGAGATGGAGTTACCGAGGCCGAGAGCAACATGAATGACCTGGTGTCC
 GAGTACCAGCAGTACCAGGATGCCACAGCCGAGGAGGAGGGCAGTTCGAGGAGGAGCTGAGGAGGAGG
 TGGCC

ACGCGTACGCGGCCGCTCGAG - GFP Tag - GTTTAA

Protein Sequence:

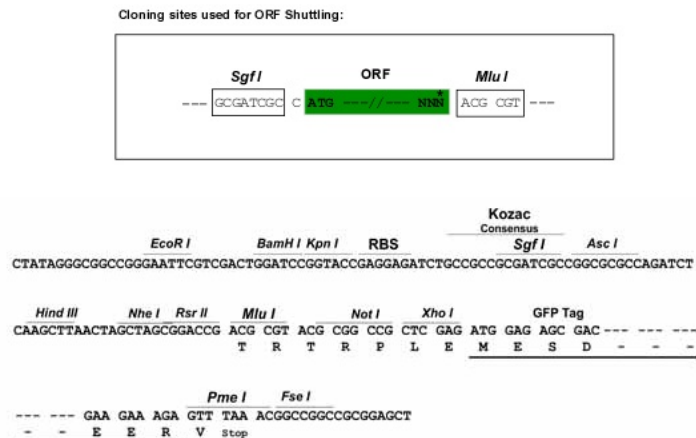
>RG206339 representing NM_006088
 Red=Cloning site Green=Tags(s)

MREIVHLQAGQCGNQIGAKFWEVISDEHGIDPTGTYHGDSLQLERINVYYNEATGGKYVPRAVLVDLEP
 GTMDSVRSRGGPFGQIFRPDNFVFGQSGAGNNWAKGHYTEGAELVDSVLDVVRKEAESDCDCLQGFQLTHSLG
 GGTGSGMGTLLISKIREEYPDRIMNTFSVVPSPKVSPTVVEPYNATLSVHQLVENTDETYCIDNEALYDI
 CFRTLKLTTPTYGDLNLLVSATMSGVTTCLRFPGQLNADLRKLAVNMPFPRLHFFMPGFAPLTSRGSQQ
 YRALTVPELTQQMFDANKMMAACDPRHGRYLTVAAVFRGRMSMKEVDEQMLNVQNKNSSYFVEWIPNNVK
 TAVCDIPRGLKMSATFIGNSTAIQELFKRISEQFTAMFRRKAFLHWYTGEGMDEMEFTEAESNMNDLVS
 EYQYQDATAEEEEGEFEEEEEEVA

TRTRPLE - GFP Tag - V

Restriction Sites:

SgfI-MluI

Cloning Scheme:


ACCN: NM_006088

ORF Size: 1335 bp

OTI Disclaimer: The molecular sequence of this clone aligns with the gene accession number as a point of reference only. However, individual transcript sequences of the same gene can differ through naturally occurring variations (e.g. polymorphisms), each with its own valid existence. This clone is substantially in agreement with the reference, but a complete review of all prevailing variants is recommended prior to use. [More info](#)

OTI Annotation: This clone was engineered to express the complete ORF with an expression tag. Expression varies depending on the nature of the gene.

Components: The ORF clone is ion-exchange column purified and shipped in a 2D barcoded Matrix tube containing 10ug of transfection-ready, dried plasmid DNA (reconstitute with 100 ul of water).

Reconstitution Method:

1. Centrifuge at 5,000xg for 5min.
2. Carefully open the tube and add 100ul of sterile water to dissolve the DNA.
3. Close the tube and incubate for 10 minutes at room temperature.
4. Briefly vortex the tube and then do a quick spin (less than 5000xg) to concentrate the liquid at the bottom.
5. Store the suspended plasmid at -20°C. The DNA is stable for at least one year from date of shipping when stored at -20°C.

RefSeq: [NM_006088.5](#), [NP_006079.1](#)

RefSeq Size: 1591 bp

RefSeq ORF: 1338 bp

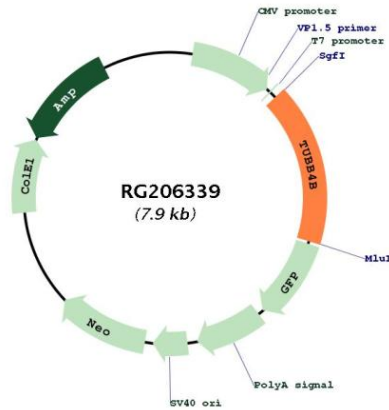
Locus ID: 10383

UniProt ID: [P68371](#)

Cytogenetics: 9q34.3

Domains: tubulin
Protein Families: Druggable Genome
Protein Pathways: Gap junction, Pathogenic Escherichia coli infection
Gene Summary: Tubulin is the major constituent of microtubules. It binds two moles of GTP, one at an exchangeable site on the beta chain and one at a non-exchangeable site on the alpha chain. [UniProtKB/Swiss-Prot Function]

Product images:



Circular map for RG206339