

## Product datasheet for **RG206336**

### CD47 (NM\_198793) Human Tagged ORF Clone

#### Product data:

Product Type:	Expression Plasmids
Product Name:	CD47 (NM_198793) Human Tagged ORF Clone
Tag:	TurboGFP
Symbol:	CD47
Synonyms:	IAP; MER6; OA3
Mammalian Cell Selection:	Neomycin
Vector:	pCMV6-AC-GFP (PS100010)
E. coli Selection:	Ampicillin (100 ug/mL)
ORF Nucleotide Sequence:	>RG206336 representing NM_198793 Red=Cloning site Blue=ORF Green=Tags(s)

TTTTGTAATACGACTCACTATAGGGCGGCCGGAATTCGTCGACTGGATCCGGTACCGAGGAGATCTGCC  
GCC**CGATCGCC**

ATGTGGCCCTGGTAGCGGCGCTGTTGCTGGGCTCGGCGTGCTGCGGATCAGCTCAGCTACTATTTAATA  
AAACAAATCTGTAGAATTCACGTTTTGTAATGACTGTCGTCATTCATGCTTTGTTACTAATATGGA  
GGCACAAAACACTACTGAAGTATACGTAAGTGGAAATTTAAAGGAAGAGATTTACACCTTTGATGGA  
GCTCTAAACAAGTCCACTGTCCCCTGACTTTAGTAGTGCAAAATTTGAAGTCTACAATTACTAAAAG  
GAGATGCCTCTTTGAAGATGGATAAGAGTGATGCTGTCTCACACACAGGAACTACTTGTGAAGTAAC  
AGAATTAACCAGAGAAGTGAAACGATCATCGAGCTAAAATATCGTGTTGTTTCATGGTTTTCTCCAAAT  
GAAAATATTCTTATTGTTATTTCCCAATTTTGTCTATACTCCTGTTCTGGGGACAGTTTGGTATTA  
CACTTAAATATAGATCCGGTGGTATGGATGAGAAAACAATTGCTTTACTTGTGCTGGACTAGTGATCAC  
TGTCATTGTCAATTGTTGGAGCCATTCTTTTCGTCGCCAGGTGAATTCATTAAAGAATGCTACTGGCCTT  
GGTTAATTGTGACTTCTACAGGATATTAATATTACTTCACTACTATGTGTTTAGTACAGCGATTGGAT  
TAACCTCCTTCGTCATTGCCATATTGGTTATTCAGGTGATAGCCTATATCCTCGCTGTGGTTGGACTGAG  
TCTCTGTATTGCGGCGTGATACCAATGCATGGCCCTCTTCTGATTTTCAGGTTTGAGTATCTTAGCTCTA  
GCACAATTACTTGGACTAGTTTATGAAATTTGTGGCTTCCAATCAGAAGACTATACAACCTCCTAGGA  
ATAAC

**ACGCGT**ACGCGGCCGCTCGAG - GFP Tag - GTTTAA



[View online »](#)

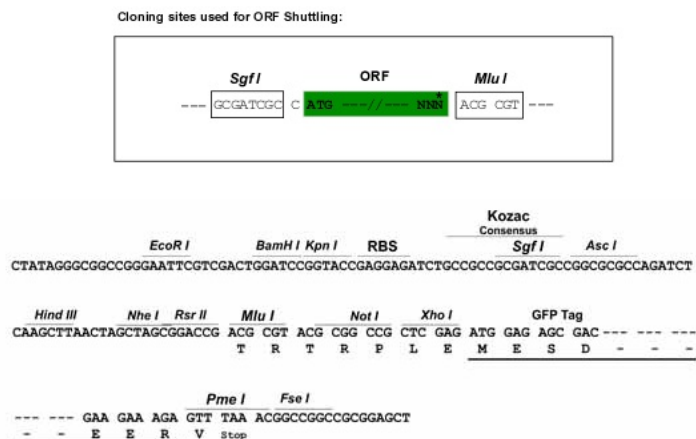
**Protein Sequence:** >RG206336 representing NM\_198793  
 Red=Cloning site Green=Tags(s)

```
MWPLVAALLLGSACCGSAQLLFNKTKSVEFTFCNDTVVIPCFTVNMEAQNTTEVYVKKWFKGRDIYTFDG
ALNKSTVPTDFSSAKIEVSQLLKGDASLKMDKSDAVSHTGNYTCEVTEL TREGETIIEIKYRVVSWFSPN
ENILIVIFPIFAILLFWGQFGIKTLKYRSGGMDEKTIALLVAGLVITVIVIVGAILFVPGEYSLKNATGL
GLIVTSTGILILLHYVVFSTAIGLTSFVIAILVIQVIAYILAVVGLSLCIAACIPMHGPLLISGLSILAL
AQLLGLVYMKFVASNQTIQPPRNN
```

TRTRPLE - GFP Tag - V

**Restriction Sites:** SgfI-MluI

**Cloning Scheme:**



**ACCN:** NM\_198793

**ORF Size:** 915 bp

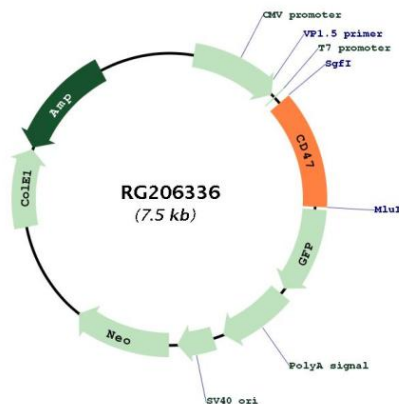
**OTI Disclaimer:** Due to the inherent nature of this plasmid, standard methods to replicate additional amounts of DNA in E. coli are highly likely to result in mutations and/or rearrangements. Therefore, OriGene does not guarantee the capability to replicate this plasmid DNA. Additional amounts of DNA can be purchased from OriGene with batch-specific, full-sequence verification at a reduced cost. Please contact our customer care team at [custsupport@origene.com](mailto:custsupport@origene.com) or by calling 301.340.3188 option 3 for pricing and delivery.

The molecular sequence of this clone aligns with the gene accession number as a point of reference only. However, individual transcript sequences of the same gene can differ through naturally occurring variations (e.g. polymorphisms), each with its own valid existence. This clone is substantially in agreement with the reference, but a complete review of all prevailing variants is recommended prior to use. [More info](#)

**OTI Annotation:** This clone was engineered to express the complete ORF with an expression tag. Expression varies depending on the nature of the gene.

<b>Components:</b>	The ORF clone is ion-exchange column purified and shipped in a 2D barcoded Matrix tube containing 10ug of transfection-ready, dried plasmid DNA (reconstitute with 100 ul of water).
<b>Reconstitution Method:</b>	<ol style="list-style-type: none"> <li>1. Centrifuge at 5,000xg for 5min.</li> <li>2. Carefully open the tube and add 100ul of sterile water to dissolve the DNA.</li> <li>3. Close the tube and incubate for 10 minutes at room temperature.</li> <li>4. Briefly vortex the tube and then do a quick spin (less than 5000xg) to concentrate the liquid at the bottom.</li> <li>5. Store the suspended plasmid at -20°C. The DNA is stable for at least one year from date of shipping when stored at -20°C.</li> </ol>
<b>RefSeq:</b>	<u><a href="#">NM_198793.3</a></u>
<b>RefSeq Size:</b>	5288 bp
<b>RefSeq ORF:</b>	918 bp
<b>Locus ID:</b>	961
<b>UniProt ID:</b>	<u><a href="#">Q08722</a></u>
<b>Cytogenetics:</b>	3q13.12
<b>Protein Families:</b>	Druggable Genome, Transmembrane
<b>Protein Pathways:</b>	ECM-receptor interaction
<b>Gene Summary:</b>	This gene encodes a membrane protein, which is involved in the increase in intracellular calcium concentration that occurs upon cell adhesion to extracellular matrix. The encoded protein is also a receptor for the C-terminal cell binding domain of thrombospondin, and it may play a role in membrane transport and signal transduction. This gene has broad tissue distribution, and is reduced in expression on Rh erythrocytes. Alternatively spliced transcript variants have been found for this gene. [provided by RefSeq, Jul 2010]

**Product images:**



Circular map for RG206336