

## Product datasheet for **RG206328**

### ARID3B (NM\_006465) Human Tagged ORF Clone

#### Product data:

Product Type:	Expression Plasmids
Product Name:	ARID3B (NM_006465) Human Tagged ORF Clone
Tag:	TurboGFP
Symbol:	ARID3B
Synonyms:	BDP; DRIL2
Mammalian Cell Selection:	Neomycin
Vector:	pCMV6-AC-GFP (PS100010)
E. coli Selection:	Ampicillin (100 ug/mL)



[View online »](#)

**ORF Nucleotide Sequence:**

>RG206328 representing NM\_006465  
 Red=Cloning site Blue=ORF Green=Tags(s)

TTTTGTAATACGACTCACTATAGGGCGGCCGGGAATTCGTCGACTGGATCCGGTACCGAGGAGATCTGCC  
 GCC**CGGATCGCC**

ATGGAGCCACTTCAGCAGCAGCAGCAGCAGCAGCAGCAACAACAGAAGCAGCCACACCTGGCTCCTC  
 TGCAGATGGATGCCAGAGAGAAGCAGGGCCAGCAGATGAGAGAAGCCAGTTCTTGATGCCAAAAGCT  
 GGTACACAGCCGACTCTCCTTTCCGCCACAGCTGGGAGACCTTCTGGCAGCACTCCCTTAGGTCCTTA  
 GCCAGAGTTCCACCCACCGCAGCAGTGGCCCAAGTGTGTTGAACGGGGCAACATGAACTCAGAGCCTGAGG  
 AAGAGGACGGAGGTTTGGAAAGTAGGATGGGGATGATGAAGTTGCAGAGGTGGCTGAGAAAAGAAACCA  
 GGCTGCTTCAAAATATTTTCATGTGCAGAAAGTAGCTCGCAAGATCCCAGAGTGGCACCCATGTCCAAT  
 CTACTCCAGCACCAGGGCTCCCACCACATGGACAACAAGCTAAAGAAGACCATAACAAAGATGCTTCCA  
 AGGCCTCACCTTCTGTCTCCACAGCAGGACAGCCGAAGTGAATCTGGATGAGCAGCTCAAGCAGAATGG  
 TGGTTTGGCCTGGAGTGTGATGCAGATGGAGGCCGGGAAGAGAGATCTCTCGAGATTTTGCCAAGCTG  
 TATGAACTGGACGGTGTCTGAAAGGAAAGAGTTCTGGATGACCTCTTCGCTTTATGCAAGAAGAGGG  
 GGACCCCATCAACCGAATCCCCATCATGGCCAACAGATCCTGGACCTGTACATGCTGTATAAGCTGGT  
 GACCGAGAAGGGAGGCTGGTGGAGATCATCAACAAGAAGATCTGGAGGGAGATCACAAAGGCCTAAAC  
 CTGCCACATCCATCACCAGCGCCGCTTACCCTCAGGACGCAGTACATGAAGTATCTGTATGCCTATG  
 AGTGTGAGAAGAAAGCCTTGAGTTCCCCAGCCGAGCTCCAGGCAGCAATTGATGGCAACCGCAGGGAGGG  
 CCGGGCCAGCTACAGCTCCTCCCTCTTTGGCTACTCACCTGCTGCGGCTACTGCTGCTGCCGCTGCC  
 GGGGCCCTGCCCTTCTCTCCACCCAAAGTCCGCTTCCCATCCTTGGCTTGGCTCCAGCAGTGGTA  
 CCAATACCAGTAGCCCTCGGATATCCCCAGCAACCACTCTCAGGAAAGGTGATGGAGCCCAAGACA  
 AGTGCCTGTGCCAAATCGTCTGGCTGTGCCGTGACCTTGGCAAGCCAGCAGGCTGGTACTCGGACCGCC  
 GCACTGGAGCAGCTGCGGGAGCGGCTGGAGTCAAGGGAGCCTGCTGAGAAGAAGGCATCGAGGCTGTCTG  
 AGGAGGAGCAGCGCTGGTGCAGCAGGCCTTCCAGCGCACTTTTTCAGCATGGCACGGCAGCTCCCCAT  
 GAAGATCAGGATCAACGGCAGGGCAGAAGACAGAGCAGAGGCCTCGGCTGCAGCACTGAACCTGACCAGC  
 AGTAGCATTGGGAGCATTAAATGTCTGTGGACATCGATGGCACCACTATGCAGGTGTGCTGTTTGCCC  
 AGAAGCCTGTGGTCCACCTCATCAGGGGTCTGCTCCCCAGGCCTCGGCAGCAGCGCCAGCAGCAGCAG  
 CAGCTCTACTGTTACCAAGTCTACCTATCCCGGGGCACCCAGCGCAGAGCCCTCCACCAGCTGG  
 TCCCTC

**ACGCGT**ACGCGGCCGCTCGAG - GFP Tag - GTTTAA

**Protein Sequence:**

>RG206328 representing NM\_006465  
 Red=Cloning site Green=Tags(s)

MEPLQQQQQQQQQQKQPHLAPLQMDAREKQGGQMQREAQFLYAQKLVTPQLLSATAGRPSGSTPLGPL  
 ARVPPTAAVAQVFERGNMNSEPEEEDGGLEDEDGDDEVAEVAEKETQAASKYFHVQKVARQDPRVAPMSN  
 LLPAPGLPPHQQAKEDHTKASKASPSVSTAGQPNWNLDEQLKQNGGLAWSDDADGGRGREISRDFAKL  
 YELDGDPERKEFLDDLDFVMQKRGTPINRIPIMAKQILDLYMLYKLVTEKGLVEIINKKIWREITKGLN  
 LPTSITSAFTLRTQYMKYLAYECEKALSSPAELQAAIDGNRREGRRPSYSSSLFGYSPAAATAAAAA  
 GAPALLSPPKIRFPILGLSSSGTNTSSPRISPATTLRKGDGAPVTTVPVNLAVPVTLASQQAGTRTA  
 ALEQLRERLESGEPAEKASRLSEEEQRLVQAFQRNFFSMARQLPMKIRINGRAEDRAEASAAALNLT  
 SSIGSINMSVDIDGTTYAGVLFQKPVVHLITGSAPQSLGSSASSSSSHCSPSPTSSRGTPSAEPSTSW  
 SL

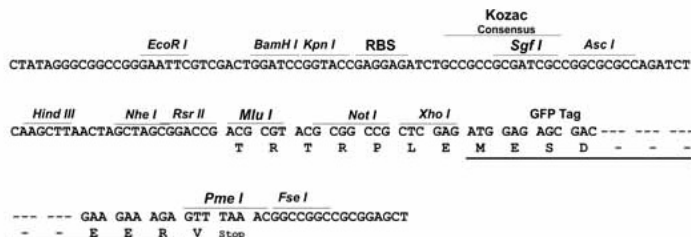
**TRTRPLE** - GFP Tag - V

**Restriction Sites:**

Sgfl-MluI

**Cloning Scheme:**

Cloning sites used for ORF Shutting:


**ACCN:** NM\_006465

**ORF Size:** 1680 bp

**OTI Disclaimer:** The molecular sequence of this clone aligns with the gene accession number as a point of reference only. However, individual transcript sequences of the same gene can differ through naturally occurring variations (e.g. polymorphisms), each with its own valid existence. This clone is substantially in agreement with the reference, but a complete review of all prevailing variants is recommended prior to use. [More info](#)

**OTI Annotation:** This clone was engineered to express the complete ORF with an expression tag. Expression varies depending on the nature of the gene.

**Components:** The ORF clone is ion-exchange column purified and shipped in a 2D barcoded Matrix tube containing 10ug of transfection-ready, dried plasmid DNA (reconstitute with 100 ul of water).

- Reconstitution Method:**
1. Centrifuge at 5,000xg for 5min.
  2. Carefully open the tube and add 100ul of sterile water to dissolve the DNA.
  3. Close the tube and incubate for 10 minutes at room temperature.
  4. Briefly vortex the tube and then do a quick spin (less than 5000xg) to concentrate the liquid at the bottom.
  5. Store the suspended plasmid at -20°C. The DNA is stable for at least one year from date of shipping when stored at -20°C.

**RefSeq:** [NM\\_006465.2](#), [NP\\_006456.1](#)
**RefSeq Size:** 4253 bp

**RefSeq ORF:** 1683 bp

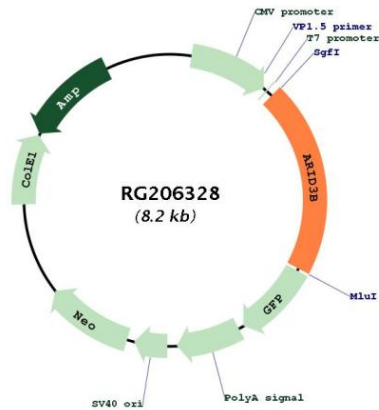
**Locus ID:** 10620

**UniProt ID:** [Q8IVW6](#)
**Cytogenetics:** 15q24.1

**Protein Families:** Stem cell - Pluripotency

**Gene Summary:** This gene encodes a member of the ARID (AT-rich interaction domain) family of DNA-binding proteins. The encoded protein is homologous with two proteins that bind to the retinoblastoma gene product, and also with the mouse Bright and Drosophila dead ringer proteins. A pseudogene on chromosome 1p31 exists for this gene. Members of the ARID family have roles in embryonic patterning, cell lineage gene regulation, cell cycle control, transcriptional regulation and possibly in chromatin structure modification. [provided by RefSeq, Jul 2008]

**Product images:**



Circular map for RG206328