

## Product datasheet for **RG206314**

### **SULT4A1 (NM\_014351) Human Tagged ORF Clone**

#### Product data:

Product Type:	Expression Plasmids
Product Name:	SULT4A1 (NM_014351) Human Tagged ORF Clone
Tag:	TurboGFP
Symbol:	SULT4A1
Synonyms:	BR-STL-1; BRSTL1; DJ388M5.3; hBR-STL-1; NST; SULTX3
Mammalian Cell Selection:	Neomycin
Vector:	pCMV6-AC-GFP (PS100010)
E. coli Selection:	Ampicillin (100 ug/mL)
ORF Nucleotide Sequence:	>RG206314 representing NM_014351 Red=Cloning site Blue=ORF Green=Tags(s)

TTTTGTAATACGACTCACTATAGGGCGGCCGGAATTCGTCGACTGGATCCGGTACCGAGGAGATCTGCC  
GCC**CGATCGCC**

ATGGCGGAGAGCGAGGCCGAGACCCCCAGCACCCCGGGGAGTTCGAGAGCAAGTACTTCGAGTTCATG  
GCGTGCGGCTGCCGCCCTTCTGCCCGGGAAGATGGAGGAGATCGCCAACTTCCCGTGCGGCCAGCGA  
CGTGTGGATCGTCACCTACCCCCCGGCACCAGCTTGTGCAGGAGGTGGTCTACTTGGTGAGCCAGGGC  
GCTGACCCCGATGAGATCGGCTTGATGAACATCGACGAGCAGCTCCCGTCTGGAGTACCCACAGCCGG  
GCCTGGACATCATCAAGGAAGTACCTCTCCCGCCTCATCAAGAGCCACCTGCCCTACCGCTTTCTGCC  
CTCTGACCTCCACAATGGAGACTCCAAGGTCATCTATATGGCTCGCAACCCCAAGGATCTGGTGGTGTCT  
TATTATCAGTTCACCGCTCTCTGCGGACCATGAGCTACCGAGGCACCTTCAAGAATTCTGCCGGAGGT  
TTATGAATGATAAGCTGGGCTACGGCTCCTGGTTTGAGCACGTGCAGGAGTTCTGGGAGCACCGCATGGA  
CTCGAACGTGCTTTTCTCAAGTATGAAGACATGCATCGGGACCTGGTGACGATGGTGGAGCAGCTGGCC  
AGATTCTGGGGTGTCTGTGACAAGGCCAGCTGGAAGCCCTGACGGAGCACTGCCACCAGCTGGTGG  
ACCAGTGTGCAACGCTGAGGCCCTGCCGTGGCCGGGAAGAGTTGGGCTGTGGAAGGACATCTTAC  
CGTCTCCATGAATGAGAAGTTTGACTTGGTGTATAAACAGAAGATGGGAAAGTGTGACCTCACGTTTGAC  
TTTTATTTA

**ACGCGT**ACGCGGCCGCTCGAG - GFP Tag - GTTTAA



[View online »](#)

**Protein Sequence:** >RG206314 representing NM\_014351

Red=Cloning site Green=Tags(s)

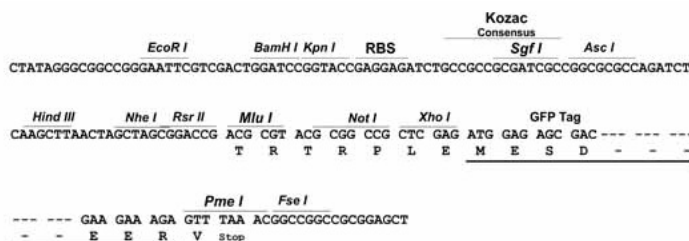
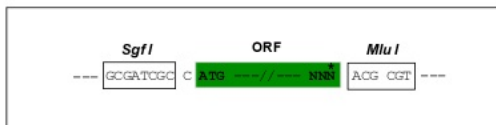
MAESEAETPSTPGEFESKYFEFHGVRLPPFCRGKMEEIANFPVVRPSDVWIVTYPGTSLLQEVVYLVSQG  
 ADPDEIGLMNIDEQLPVLEYQPGLDIIKELTSPRLIKSHLPYRFLPSDLHNGDSKVIYMARNPKDLVVS  
 YYQFHRSLRTMSYRGTFQEFCCRFRMNDKLGYSWFEHVQEFWEHRMDSNVLFLKYEDMHRDLVTMVEQLA  
 RFLGVSCDKAQLLEALTEHCHQLVDQCCNAEALPVGRGRVGLWKDIFTVMNEKFDLVYKQKMGKCDLTFD  
 FYL

TRTRPLE - GFP Tag - V

**Restriction Sites:** SgfI-MluI

**Cloning Scheme:**

Cloning sites used for ORF Shuttling:



**ACCN:** NM\_014351

**ORF Size:** 849 bp

**OTI Disclaimer:** The molecular sequence of this clone aligns with the gene accession number as a point of reference only. However, individual transcript sequences of the same gene can differ through naturally occurring variations (e.g. polymorphisms), each with its own valid existence. This clone is substantially in agreement with the reference, but a complete review of all prevailing variants is recommended prior to use. [More info](#)

**OTI Annotation:** This clone was engineered to express the complete ORF with an expression tag. Expression varies depending on the nature of the gene.

**Components:** The ORF clone is ion-exchange column purified and shipped in a 2D barcoded Matrix tube containing 10ug of transfection-ready, dried plasmid DNA (reconstitute with 100 ul of water).

**Reconstitution Method:**

1. Centrifuge at 5,000xg for 5min.
2. Carefully open the tube and add 100ul of sterile water to dissolve the DNA.
3. Close the tube and incubate for 10 minutes at room temperature.
4. Briefly vortex the tube and then do a quick spin (less than 5000xg) to concentrate the liquid at the bottom.
5. Store the suspended plasmid at -20°C. The DNA is stable for at least one year from date of shipping when stored at -20°C.

**RefSeq:** [NM\\_014351.3](#), [NP\\_055166.1](#)

**RefSeq Size:** 2465 bp

**RefSeq ORF:** 855 bp

**Locus ID:** 25830

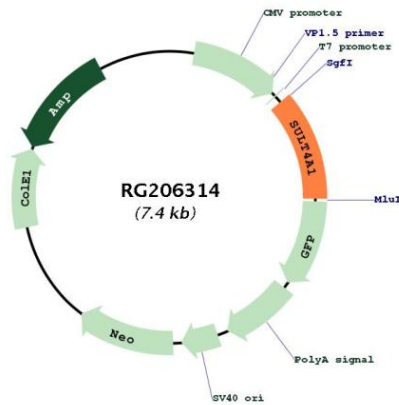
**UniProt ID:** [Q9BR01](#)

**Cytogenetics:** 22q13.31

**Domains:** Sulfotransfer

**Gene Summary:** This gene encodes a member of the sulfotransferase family. The encoded protein is a brain-specific sulfotransferase believed to be involved in the metabolism of neurotransmitters. Polymorphisms in this gene may be associated with susceptibility to schizophrenia. [provided by RefSeq, Jul 2008]

**Product images:**



Circular map for RG206314