

Product datasheet for **RG206284**

Dynamin 1 (DNM1) (NM_001005336) Human Tagged ORF Clone

Product data:

Product Type:	Expression Plasmids
Product Name:	Dynamin 1 (DNM1) (NM_001005336) Human Tagged ORF Clone
Tag:	TurboGFP
Symbol:	DNM1
Synonyms:	DEE31; DNM; EIEE31
Mammalian Cell Selection:	Neomycin
Vector:	pCMV6-AC-GFP (PS100010)
E. coli Selection:	Ampicillin (100 ug/mL)



[View online »](#)

ORF Nucleotide Sequence:

>RG206284 representing NM_001005336
 Red=Cloning site Blue=ORF Green=Tags(s)

TTTTGTAATACGACTCACTATAGGGCGGCCGGAATTCGTCGACTGGATCCGGTACCGAGGAGATCTGCC
 GCC**CGATCGCC**

ATGGGCAACCGCGCATGGAAGATCTCATCCCGCTGGTCAACCGCTGCAAGACGCCTTCTCTGCCATCG
 GCCAGAACCGCGACCTCGACCTGCCGCAGATCGCTGTGGTGGCGGCCAGAGCGCCGCAAGAGCTCGGT
 GCTCGAGAATTTCTAGGCAGGGACTTCTTGCCTCGAGGATCTGGCATTGTCACCCGACGTCCTTGGT
 TTGCAGCTGGTCAATGCAACCACAGAATATGCCGAGTTCCTGCACTGCAAGGAAAGAAATTCACCGACT
 TCGAGGAGGTGCGCCTTGGATCGAGGCCGAGACCGAGGGTCAACCGCACCAACAAGGCATCTCGCC
 GGTGCCTATCAACCTCCGCTCTACTCGCCGACGCTGCTGAACCTGACCTGGTGGACCTGCCCGGAATG
 ACCAAGTCCCGTGGGGACCAACCTCCCGACATCGAGTTCAGATCCGAGACATGCTTATGCAGTTT
 TCACCAAGGAGAACTGCCTCATCTGGCCGTGTCCTCCGCAACTCTGACCTGGCAATTCTGACGCCCT
 CGAGGTCGCCAAGGAGGTGGACCCCGAGGCCAGCGCACCATCGGGTCAACCAAGCTGGACCTGATG
 GACGAGGGCACAGATGCCCGTGTGTGTTGAGAAACAAGCTGCTCCCGTGCAGAGGGTACATTTGGAG
 TGGTGAACCGGAGCCAGAAGGACATTGATGGCAAGAAGGACATTACCGCCGCTTGGCTGCTGAACGAAA
 GTTCTTCTCTCCATCCATCTTATCGCCACTTGGCTGACCGTATGGGCACGCCCTACCTGCAGAAGGTC
 CTCAATCAGCAACTGACGGACCATCCGGGACACTGCCGGGCTGCGGAACAAGCTGCAGAGCCAGC
 TACTGTCCATTGAGAAGGAGGTGGAGGAATACAAGAACTCCGCCCTGATGACCCAGCTCGCAAGACCA
 GGCCCTGCTGCAGATGGTCCAGCAGTTCGCCGTAGACTTTGAGAAGCGCATTGAGGGTCCAGGAGATCAG
 ATCGACACCTACGAACTGTCAGGGGAGCCCGCATTAACCGAATCTTCCACGAGCGCTCCCTTTGAGC
 TGGTCAAGATGGAGTTTATGAGAAGAACTCCGAAGGAGATCAGCTATGCTATCAAGAAATCCATGG
 CATTAGAACGGGCTGTTTACCCAGACATGGCCTTTGAGACATTGTGAAAAAGCAGGTGAAGAAGATC
 CGAGAACCGTGTCTCAAGTGTGTGGACATGGTTATCTCGAGCTAATCAGCACCGTTAGACAGTGCACCA
 AGAAGCTCCAGCAGTACCCGCGCTACGGGAGGAGATGGAGCGCATCGTGACCACCCACATCCGGGAGCG
 CGAGGGCCGCACTAAGGAGCAGGTATGCTTCTCATCGATATCGAGCTGGCTTACATGAACCAACCAT
 GAGGACTTCATAGGCTTTGCCAATGCTCAGCAGAGGAGCAACCAGATGAACAAGAAGAAGACTTCAGGGA
 ACCAGGATGAGATTCTGGTCATCCGAAGGGCTGGCTGACTATCAATAATTGGCATCATGAAAGGGGG
 CTCCAAGGAGTACTGGTTTGTGCTGACTGCTGAGAATCTGTCTTGGTACAAGGATGATGAGGAGAAAG
 AAGAAATACATGCTGTCTGTGGACAACCTCAAGCTGCGGGACGTGGAGAAGGGCTTTATGTGAGCAAGC
 ATATCTTTGCCCTCTTTAACACGGAGCAGAGGAATGTCTACAAGGATTATCGGCAGCTGGAGCTAGCCTG
 TGAGACACAGGAGGAGGTGGACAGCTGGAAGGCCTCCTTCTGAGGGCTGGCGTGTACCCTGAGCGTGT
 GGGGACAAAGAGAAAGCCAGCGAGACCGAGGAGAATGGCTCCGACAGCTTCATGCATTCCATGGACCCAC
 AGCTGGAACGGCAAGTGGAGACCATCCGGAATCTTGTGGACTCATACATGGCCATTGTCAACAAGACCGT
 GAGGGACCTCATGCCAAGACCATCATGCACCTCATGATTAACAATACCAAGGAGTTCATCTTCTCGGAG
 CTGCTGGCCAACCTGTACTCGTGTGGGACCAGAACACGCTGATGGAGGAGTCGGCGGAGCAGGCACAGC
 GGCAGCAGGATGCTGCGCATGTACCACGCACTGAAGGAGGCGCTCAGCATCATCGCGACATCAACAC
 GACCACCGTCAGCACGCCATGCCCGCCCGTGGACGACTCCTGGCTGCAGGTGCAGAGCGTACCGGCC
 GGACGCAGGTCCGCCACGTCCAGCCCCACGCCGAGCGCCGAGCCCGCGTGCCTGCCCCAGCCCGGCCG
 GGTGCGGGGCCCTGCTCCTGGGCTCCGCTGCTGGTCCGCCATGGGGGGGGCCCCCGTGCCTC
 CAGGCCGGGGCTTCCCTGACCTTTCCGCCCTCCCGCTCAGGTGCCCTCGCGCCCAACCGCGCCCG
 CCCGGGTCCCCAGAATCACTATCAGTGACCCC

ACCGTACGCGGCCGCTCGAG - GFP Tag - GTTTAA

Protein Sequence: >RG206284 representing NM_001005336
Red=Cloning site Green=Tags(s)

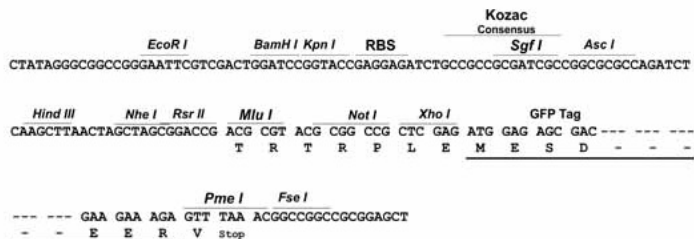
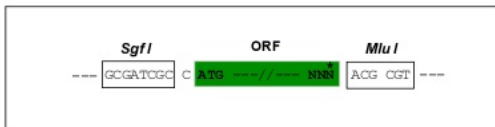
MGNRGMEDLIPLVNRLQDAFSAIGQNADLDLPQIAVVGGSAGKSSVLENFVGRDFLPRGSGIVTRRPLV
LQLVNATTEYAEFLHCKGKKFTDFEEVRLIEAETDRVTGTNKGISPVPINLRVYSPHVLNLTLDLPGM
TKVPVGDQPPDIEFQIRDMLMQFVTKENCLILAVSPANSDLANSDALEVAKEVDPQGQRTIGVITKLDLM
DEGTDARDVLENKLLPLRRGYIGVVNRSQKDIDGKKDITAAALAAERKFFLSHPSYRHLADRMGTPYLQKV
LNQQLTDHIRDTLPGLRNKLSQQLSIEKEVEEYKNFRPDDPARKTKALLQMVQQFAVDFEKRIEGSGDQ
IDTYELSGGARINRIFHERFPFELVKMEFDEKELRREISYAIKNIHGIRTGLFTPMAFETIVKKQVKKI
REPCLKCVDMVISELISTVRQCTKKLQQYPREREEMERIVTTHIREREGRTKEQVMLLIDIELAYMNTNH
EDFIGFANAQQRSNQMNKKTSGNQDEILVIRKGWLTINNIIGIMKGSKEYWFVLTAEENLSWYKDDEEKE
KKYMLSVDNLKLRDVEKGFMSKHFALFNTEQRNVYKDYRQLELACETQEEVDSWKASFLRAGVYPERV
GDKEKASETEENGSDSFMSMDPQLERQVETIRNLVDSYMAIVNKTVRDLMPKTIHMLMINNTKEFIFSE
LLANLYSCGDQNTLMEESAQAQRREMLRMYHALKEALSIIIGDINTTTVSTPMPPPVDSDWLQVQSVPA
GRRSPTSSPTQRRAPAVPPARPGSRGPAGPPPAGSAMGGAPPVPSRPGASDPDFGPPPVPSRPNRAP
PGVPRITISDP

TRTRPLE - GFP Tag - V

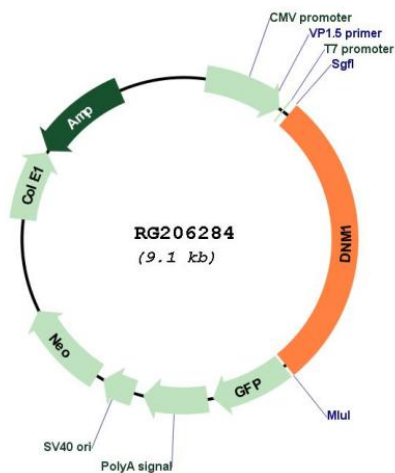
Restriction Sites: Sgfl-Mlul

Cloning Scheme:

Cloning sites used for ORF Shuttling:



Plasmid Map:



ACCN:	NM_001005336
ORF Size:	2553 bp
OTI Disclaimer:	<p>Due to the inherent nature of this plasmid, standard methods to replicate additional amounts of DNA in E. coli are highly likely to result in mutations and/or rearrangements. Therefore, OriGene does not guarantee the capability to replicate this plasmid DNA. Additional amounts of DNA can be purchased from OriGene with batch-specific, full-sequence verification at a reduced cost. Please contact our customer care team at custsupport@origene.com or by calling 301.340.3188 option 3 for pricing and delivery.</p> <p>The molecular sequence of this clone aligns with the gene accession number as a point of reference only. However, individual transcript sequences of the same gene can differ through naturally occurring variations (e.g. polymorphisms), each with its own valid existence. This clone is substantially in agreement with the reference, but a complete review of all prevailing variants is recommended prior to use. More info</p>
OTI Annotation:	This clone was engineered to express the complete ORF with an expression tag. Expression varies depending on the nature of the gene.
Components:	The ORF clone is ion-exchange column purified and shipped in a 2D barcoded Matrix tube containing 10ug of transfection-ready, dried plasmid DNA (reconstitute with 100 ul of water).
Reconstitution Method:	<ol style="list-style-type: none"> 1. Centrifuge at 5,000xg for 5min. 2. Carefully open the tube and add 100ul of sterile water to dissolve the DNA. 3. Close the tube and incubate for 10 minutes at room temperature. 4. Briefly vortex the tube and then do a quick spin (less than 5000xg) to concentrate the liquid at the bottom. 5. Store the suspended plasmid at -20°C. The DNA is stable for at least one year from date of shipping when stored at -20°C.
RefSeq:	NM_001005336.1 , NP_001005336.1
RefSeq Size:	3253 bp
RefSeq ORF:	2556 bp
Locus ID:	1759
UniProt ID:	Q05193
Cytogenetics:	9q34.11
Protein Families:	Druggable Genome
Protein Pathways:	Endocytosis, Fc gamma R-mediated phagocytosis

Gene Summary:

This gene encodes a member of the dynamin subfamily of GTP-binding proteins. The encoded protein possesses unique mechanochemical properties used to tubulate and sever membranes, and is involved in clathrin-mediated endocytosis and other vesicular trafficking processes. Actin and other cytoskeletal proteins act as binding partners for the encoded protein, which can also self-assemble leading to stimulation of GTPase activity. More than sixty highly conserved copies of the 3' region of this gene are found elsewhere in the genome, particularly on chromosomes Y and 15. Alternatively spliced transcript variants encoding different isoforms have been described. [provided by RefSeq, Jul 2008]