

## Product datasheet for **RG206257**

### **TMEM106B (NM\_018374) Human Tagged ORF Clone**

#### Product data:

**Product Type:** Expression Plasmids  
**Product Name:** TMEM106B (NM\_018374) Human Tagged ORF Clone  
**Tag:** TurboGFP  
**Symbol:** TMEM106B  
**Synonyms:** HLD16  
**Mammalian Cell Selection:** Neomycin  
**Vector:** pCMV6-AC-GFP (PS100010)  
**E. coli Selection:** Ampicillin (100 ug/mL)  
**ORF Nucleotide Sequence:** >RG206257 representing NM\_018374  
**Red=Cloning site Blue=ORF Green=Tags(s)**

TTTTGTAATACGACTCACTATAGGGCGGCCGGAATTCGTCGACTGGATCCGGTACCGAGGAGATCTGCC  
GCC**CGATCGCC**

ATGGGAAAGTCTCTTTCTCATTTCCTTTGCATTCAAGCAAAGAAGATGCTTATGATGGAGTCACATCTG  
AAAACATGAGGAATGGACTGGTTAATAGTGAAGTCCATAATGAAGATGGAAGAAATGGAGATGTCTCTCA  
GTTTCCATATGTGAATTTACAGGAAGAGATAGTGTACCTGCCCTACTTGTGAGGAAACAGGAAGAATT  
CCTAGGGGCAAGAAAACCAACTGGTGGCATTGATCCATATAGTGATCAGAGATTAAGGCCAAGAAGAA  
CAAAGCTGTATGTGATGGCTTCTGTGTTTGTCTGTCTACTCCTTTCTGGATTGGCTGTGTTTTCTTTT  
CCCTCGCTCTATCGACGTGAAATACATTGGTGTAAAATCAGCCTATGTCAGTTATGATGTTGAGAAGCGT  
ACAATTTATTTAAATATCACAACACACTAAATATAACAAACAATAACTATTACTCTGTGCAAGTTGAAA  
ACATCACTGCCCAAGTTCAATTTTCAAAAACAGTTATTGGAAAGGCACGCTTAAACAACATAACCATTAT  
TGGTCCACTTGATATGAAACAAATTGATTACACAGTACCTACCGTTATAGCAGAGGAAATGAGTTATATG  
TATGATTTCTGTACTCTGATATCCATCAAAGTGCATAACATAGTACTCATGATGCAAGTTACTGTGACAA  
CAACATACTTTGGCCACTCTGAACAGATATCCCAGGAGAGGTATCAGTATGTCGACTGTGGAAGAAACAC  
AACTTATCAGTTGGGCGAGTCTGAATATTTAAATGTACTTCAGCCACAACAG

**ACGCGTACGCGGCCGCTCGAG** - GFP Tag - GTTTAA



[View online »](#)

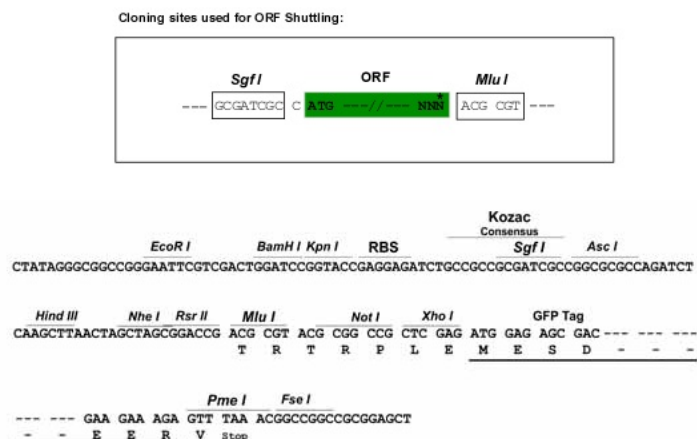
**Protein Sequence:** >RG206257 representing NM\_018374  
 Red=Cloning site Green=Tags(s)

MGKSLSHLPLHSSKEDAYDGVTSENMRNGLVNSEVHNEDGRNGDVSQFPYVEFTGRDSVTCPTCQGTGRI  
 PRGQENQLVALIPYSDQRLRPRRTKLYVMASVFVCLLLSGLAVFFLFPRSIDVKYIGVKSAYVSYDVQKR  
 TIYLNITNTLNI TNNNYYSVEVENITAQVQFSKTVIGKARLNNITIIIGPLDMKQIDYTVPTVIAEEMSYM  
 YDFCTLI SIKVHNI VLMMQVT VTTTYFGHSEQISQERYQYVDCGRNTTYQLGQSEYLNVLQPQQ

TRTRPLE - GFP Tag - V

**Restriction Sites:** SgfI-MluI

**Cloning Scheme:**



**ACCN:** NM\_018374

**ORF Size:** 822 bp

**OTI Disclaimer:** The molecular sequence of this clone aligns with the gene accession number as a point of reference only. However, individual transcript sequences of the same gene can differ through naturally occurring variations (e.g. polymorphisms), each with its own valid existence. This clone is substantially in agreement with the reference, but a complete review of all prevailing variants is recommended prior to use. [More info](#)

**OTI Annotation:** This clone was engineered to express the complete ORF with an expression tag. Expression varies depending on the nature of the gene.

**Components:** The ORF clone is ion-exchange column purified and shipped in a 2D barcoded Matrix tube containing 10ug of transfection-ready, dried plasmid DNA (reconstitute with 100 ul of water).

**Reconstitution Method:**

1. Centrifuge at 5,000xg for 5min.
2. Carefully open the tube and add 100ul of sterile water to dissolve the DNA.
3. Close the tube and incubate for 10 minutes at room temperature.
4. Briefly vortex the tube and then do a quick spin (less than 5000xg) to concentrate the liquid at the bottom.
5. Store the suspended plasmid at -20°C. The DNA is stable for at least one year from date of shipping when stored at -20°C.

**RefSeq:** [NM\\_018374.4](#)

**RefSeq Size:** 6456 bp

**RefSeq ORF:** 825 bp

**Locus ID:** 54664

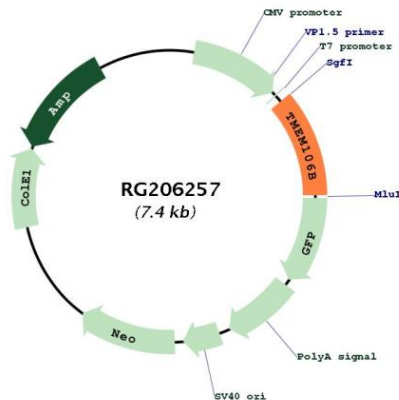
**UniProt ID:** [Q9NUM4](#)

**Cytogenetics:** 7p21.3

**Protein Families:** Transmembrane

**Gene Summary:** Involved in dendrite morphogenesis and maintenance by regulating lysosomal trafficking via its interaction with MAP6. May act by inhibiting retrograde transport of lysosomes along dendrites. Required for dendrite branching.[UniProtKB/Swiss-Prot Function]

## Product images:



Circular map for RG206257