

## Product datasheet for **RG206255**

### AMBRA1 (NM\_017749) Human Tagged ORF Clone

#### Product data:

Product Type:	Expression Plasmids
Product Name:	AMBRA1 (NM_017749) Human Tagged ORF Clone
Tag:	TurboGFP
Symbol:	AMBRA1
Synonyms:	DCAF3; WDR94
Mammalian Cell Selection:	Neomycin
Vector:	pCMV6-AC-GFP (PS100010)
E. coli Selection:	Ampicillin (100 ug/mL)
ORF Nucleotide Sequence:	>RG206255 representing NM_017749 Red=Cloning site Blue=ORF Green=Tags(s)

TTTTGTAATACGACTCACTATAGGGCGGCCGGAATTCGTCGACTGGATCCGGTACCGAGGAGATCTGCC  
 GCC**CGATCGCC**

ATGAAGGTTGTCCCAGAAAAGATGCTGTCCGGATACTCTGGGGCGAGAACGGGGTGCTCGGGCCATGG  
 GAGCTCAGCGGCTTCTGCAGGAGCTGGTAGAGGATAAAACCCGGTGATGAAATGGGAGGGCAAGAGAGT  
 AGAACTGCCGGATAGTCCACGCTCTACCTTCTTATTGGCCTTCAGCCCAGACAGGACTCTCTAGCCTCC  
 ACCCATGTGAACCATAATATCTATATTACGGAGGTGAAGACTGGCAAGTGTGTTCACTTCCCTGATTGGAC  
 ACCGCCGTACTCCATGGTGTGCTACTTTTCATCCACCATCTCAGGCCTTATTGCTTCTGGCTGCCTAGA  
 TGGGGAGGTTAGGATTTGGGATTTACACGGTGGCAGTGAAAGCTGGTTCACAGATAGCAACAATGCCATT  
 GCCTCCCTGGCTTTCACCCCTACGGCTCAGCTCCTGCTGATTGCCACTGCCAATGAGATCCACTTCTGGG  
 ACTGGAGTCGACGGGAACCCCTTGTGTGGTGAAGACAGCTAGTGAGATGGAACGGGTCCGTCTGGTGAG  
 ATTTGATCCACTTGGACACTACTTACTCACAGCAATTGTTAACCCCTCTAATCAACAGGGTGATGACGAA  
 CCAGAGATCCCCATAGATGGAACAGAATTATCCCACTACCGTCAGCGTGCCCTCCTGCAATCACAGCCAG  
 TTCGCCGACGCCTCTCCTCCACAATTTCTGCACATGCTGTCTCCCGCTCTTCTGGCATCCAGACCGA  
 GCCCTTCCATCCCCCGGAGCAGGCCTCGTCAACGCAGCAGGACCAGGGCCCTCTGAACCGGCCGTCTGCC  
 TTCAGTACAGTCCAGAGCAGCACTGCCGCAACACGCTCCGCAACCTCAGTCTGGGTCTACCCGCCGCT  
 CTTTGGGAGGGCCTCTGTCTAGCCACCCTTCTAGGTATCACCGAGAAATAGCTCCTGGGTTGACAGGATC  
 TGAGTGGACCCGACAGTACTCAGTCTGAACCTCCGCTCTGAGGCGGAATCCATGCCCCGCCAGAACCC  
 AGTGCCTCTTCGGTGAGTTTGTGTCTGTGCTGAGACAGCAGGAAGGTGGCTCTCAGGCATCTGTGTACA  
 CTTAGCCACAGAAGGGAGGGGTTTTCCGGCATCAGGGTTGGCAACTGAGTCAGATGGAGGGAATGGCTC  
 CAGCCAAAACAACTCGGGCAGCATTGCCATGAGCTTCAGTGTGACCTGAGACGCTTCTTTCTGGAGTAT  
 GACCGGCTTCAGGAGCTGGATCAGAGCCTGAGTGGGGAAGCTCCCGAGCCCAACAGGCCAGGAAATGC  
 TCAACAATAACATTGAATCTGAGAGGCCAGGCCCTTCCACCAGCCACCCACACAGCAGTGAGAACAA  
 CTCCAACCTGTCCGTGGCCACCTGAATCGCTGCTGCTTGCCACAATCTCCTGACCTCAACAACGAT


[View online »](#)

ACCCTGCGCTGGGAAAGAACACACCTAACTACTCCTCTGGCGAGGCTAGTTCCTCTTGGCAGGTCCCCA  
 GTCCTTTGAGAGTGTGCCATCAAGTGGCAGCCAGTTGCCACCTCTCGAGCGGACTGAGGGCCAAACGCC  
 CAGCTCCAGCAGGCTGGAGTTGAGCAGCTCTGCTAGTCCGAGGAGGAGAGGACTGTGGGGTGGCCTTT  
 AACCAGGAGACAGGCCACTGGGAAAGAATTTACACCCAGTCCAGCAGATCTGGAATGTGTACAGGAGG  
 CCTTACATCAGGATATGCCTGAGGAGAGCTCTGAGGAGGATTCAGTCCAGGAGGAGGCTGTGGAATCTTC  
 CCTCATTTTATTATCCCGTTATGATGGAGCAGGATCCAGAGAGCACCCAATTTACCCAGACCCAGCGAGA  
 TTATCTCCTGCTGCATACTACGCCAGAGGATGATCCAGTATCTCTCACGGAGAGACAGTATTCGCCAGC  
 GCTCCATGCGCTACCAACAGAACCCTCTCCGTTCTTCCACCTCCTCCTCTTCTCAGACAACCAGGGTCC  
 ATCAGTAGAGGGAACCGACTTGGAATTTGAGGACTTTGAGGACAATGGTGACAGATCCAGGCACCGAGCT  
 CCACGCAATGCCCGATGTCTGCACCTTCGCTTGAGCGCTTTGTCCCAAGGCGTTTCTTGCTGCCTGAGT  
 ACTTGCTTATGCTGGGATTTTTCATGAACGTGGACAGCCTGGCTTGCTACTACTCTTCTGTAAACAG  
 GGTCTGGCAGGGGAGTGATCGGTGATGGACAGTCTGCTGTGGCCAGTAACATTGCCAATACTACCTAC  
 CGGCTCCAGTGGTGGGACTTCACTAAGTTTGACCTCCCTGAAATCAGTAATGCTTCGGTGAATGTGCTGG  
 TGCAGAACTGCAAGATCTACAATGATGCCAGCTGTGACATTTCTGCAGATGGCCAGCTCCTGGCAGCTTT  
 CATCCCCAGCAGCCAGAGGGGCTTCTGATGAAGGCATCCTGGCAGTGTACTCCCTGGCCCCCATAAC  
 CTGGGCGAAATGCTCTACACCAAGCGATTTGGTCCCAATGCCATTTCCGGTGAAGCTGTCCCAATGGGCA  
 GATATGTAATGGTGGGCTTGCCCTCACGAAGGATCCTGCTGCACCCCTCCACAGAGCACATGGTGGCCCA  
 GGTCTTCAGGCTGCAACAGGCCCATGGTGGAGAGACCTCCATGAGGAGAGTTTTCAACGTCCTTTATCCC  
 ATGCTGCGGACAGCGGAGACATGTAGTATCAACTCTGCCGTTGGCTGCCTGAGCCAGGGCTTGGCT  
 TGGCCTATGGTACTAACAAAGGAGACCTGGTGTCTGCCGACAGAGGCCTTAACTCTGGTGTTGAGTA  
 CTACTGGGACAGCTGAACGAGACGGTCTTCACTGTCCATTCCACAGCAGGAGCAGCGAGCGGCCTGGA  
 ACCAGCAGAGCCACATGGAGGACAGACAGAGACATGGGGCTGATGAATGCCATTGGGCTTCAGCCCCGGA  
 ACCCTGCCACCTCAGTGACATCTCAGGGCACGAGACTCTGGCCCTTCAGCTGCAGAATGCCGAAACACA  
 GACTGAGAGGGAGGTGCCGGAGCCAGGGACAGCCGCTCAGTCCCTGGTGAAGGTGAGGGTTCAGAGTAT  
 GGTGCCAGTGGAGAAGATGCGCTCAGCAGGATCCAGAGGCTGATGGCGGAGGGCGGCATGACAGCCGTGG  
 TGCAGCGGAGCAGAGCACCAACCATGGCCTCCATGGGCGGCTTCGGCAACAACATCATCGTCAGCCACCG  
 CATTACCCGAGCTCTCAGACGGGCACTGAACCTGGTGCCGCCACACCTCCTCAGCCAGCCCTCCACC  
 TCTCGGGGACTGCTCCCAGAGGCCGGGCAACTGGCAGAGCGAGGCTAAGCCCCGGACAGCTTCTGGG  
 ACCAGCCTGGTACCCCTGGGCGGGAGCCAACCCAGCCAACCTGCCCTCTTCTCCCTGTCCCCATTCC  
 TGTTTCCCTTCCCAGCGCTGAGGGACCAACCGTCCACTGCGAGTTGACCAATAACAACCACCTTCTGGAT  
 GGTGGCAGCAGCAGGGGGACGCTGCAGGCCCTAGGGGAGAACCACGGAACAGG

ACGCGTACGCGGCGGCTCGAG – GFP Tag – GTTTAA

Protein Sequence: >RG206255 representing NM\_017749  
Red=Cloning site Green=Tags(s)

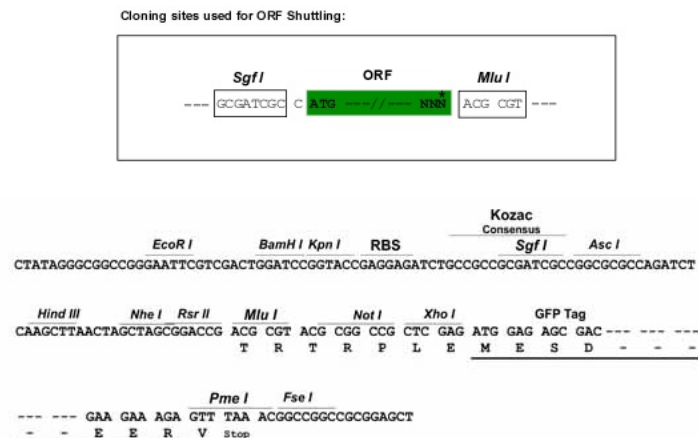
MKVVPEKNAVRILWGRERGARAMGAQRLLQELVEDKTRWMKWEGRVELPDSRSTFLLAFSPDRTLLAS  
THVNHNIYITEVKTGKCVHSLIGHRRTPWCVTFTHTISGLIASGCLDGEVRIWDLHGGSESWFTDSNNAI  
ASLAFHPTAQLLLIATANEIHFWDWSRREPFVAVKTASEMERVRLVRFDPGLGHYLLTAIVNPSNQGDDE  
PEIPIDGTELSHYRQRALLQSQPVRRTPLLHNFLHMLSSRSSGIQTEPFHPPEQASSTQQDQGLLRPSA  
FSTVQSSSTAGNTRLNLSLGPTRRSLGGPLSSHPSTRYHREIAPGLTGSEWTRTVLSLNSRSEAESMPPT  
SASSVSLLSVLRRQEGGSQASVYTSATEGRGFASGLATESDGGNGSSQNNSGSIRHELQCDLRRFFLEY  
DRLQELDQSLSGEAPQTQQAQEMLNNNIESERPGPSHQPTPHSSENNNLNRGHLNRCRACHNLLTFNND  
TLRWERTTPNYSSGEASSWQVPSSFESVPSGSQLPPLERTEGQTPSSSRLELSSASPEERTVGVA  
NQETGHWERIYQSSRSGTVSQEALHQDMPEESSEEDSLRRRLLESSLISLRYDGAGSREHPIYPDPAR  
LSPAAYYAQRMIQYLSRRDSIRQSMRYQQNRLRSSTSSSSDNQGPSVEGTDLEFEDFEDNGDRSRHRA  
PRNARMSAPSLGRFVPRRFLPEYLPYAGIFHERGQPLATHSSVNRVLGAVIGDQSAVASNIANTTY  
RLQWWDFTKFDLPEISNASVNVLVQNCKIYNDASCDISADGQLAAFISSQGRFPDEGILAVYSLAPHN  
LGEMLYTKRFGPNAISVLSLPMGRYVMVGLASRRILLHPSTEHMVAQVFRLQQAHGGETSMRRVFNVLYP  
MPADQRRHVSINSARWLPEPGLGLAYGTNKGDLVICRPEALNSGVEYYWDQLNETVFTVHSNSRSESRPG  
TSRATWRTDRDMLMNAIGLQPRNPATSVTSQGTETLALQLQNAETQTEREVPEPGTAASGPGESEY  
GASGEDALSRIQRLMAEGGMTAVVQREQSTTMASMGFGNNIIVSHRIHRSSQTGTPEGAHTSSPQST  
SRGLLPEAGQLAERGLSPRTASWDQPGTGPREGPTPLPSSSPVPIPVSLPSAEGPTVHCELNNHLLD  
GGSSRGDAAGPRGEPRNR

TRTRPLE – GFP Tag – V

Restriction Sites:

SgfI-MluI

Cloning Scheme:

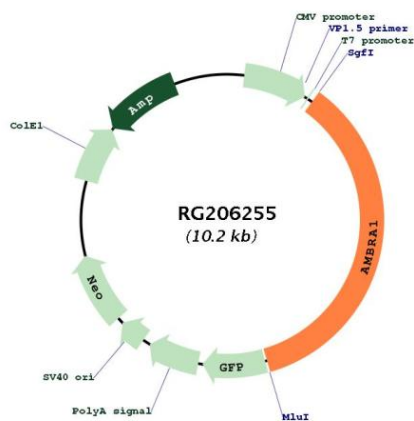


ACCN: NM\_017749

ORF Size: 3624 bp

<b>OTI Disclaimer:</b>	<p>Due to the inherent nature of this plasmid, standard methods to replicate additional amounts of DNA in E. coli are highly likely to result in mutations and/or rearrangements. Therefore, OriGene does not guarantee the capability to replicate this plasmid DNA. Additional amounts of DNA can be purchased from OriGene with batch-specific, full-sequence verification at a reduced cost. Please contact our customer care team at <a href="mailto:custsupport@origene.com">custsupport@origene.com</a> or by calling 301.340.3188 option 3 for pricing and delivery.</p> <p>The molecular sequence of this clone aligns with the gene accession number as a point of reference only. However, individual transcript sequences of the same gene can differ through naturally occurring variations (e.g. polymorphisms), each with its own valid existence. This clone is substantially in agreement with the reference, but a complete review of all prevailing variants is recommended prior to use. <a href="#">More info</a></p>
<b>OTI Annotation:</b>	This clone was engineered to express the complete ORF with an expression tag. Expression varies depending on the nature of the gene.
<b>Components:</b>	The ORF clone is ion-exchange column purified and shipped in a 2D barcoded Matrix tube containing 10ug of transfection-ready, dried plasmid DNA (reconstitute with 100 ul of water).
<b>Reconstitution Method:</b>	<ol style="list-style-type: none"> <li>1. Centrifuge at 5,000xg for 5min.</li> <li>2. Carefully open the tube and add 100ul of sterile water to dissolve the DNA.</li> <li>3. Close the tube and incubate for 10 minutes at room temperature.</li> <li>4. Briefly vortex the tube and then do a quick spin (less than 5000xg) to concentrate the liquid at the bottom.</li> <li>5. Store the suspended plasmid at -20°C. The DNA is stable for at least one year from date of shipping when stored at -20°C.</li> </ol>
<b>RefSeq:</b>	<a href="#">NM_017749.2</a> , <a href="#">NP_060219.2</a>
<b>RefSeq Size:</b>	5044 bp
<b>RefSeq ORF:</b>	3627 bp
<b>Locus ID:</b>	55626
<b>UniProt ID:</b>	<a href="#">Q9C0C7</a>
<b>Cytogenetics:</b>	11p11.2
<b>Gene Summary:</b>	Regulates autophagy and development of the nervous system. Involved in autophagy in controlling protein turnover during neuronal development, and in regulating normal cell survival and proliferation (By similarity).[UniProtKB/Swiss-Prot Function]

## Product images:



Circular map for RG206255