

Product datasheet for **RG206252**

JPH3 (NM_020655) Human Tagged ORF Clone

Product data:

Product Type:	Expression Plasmids
Product Name:	JPH3 (NM_020655) Human Tagged ORF Clone
Tag:	TurboGFP
Symbol:	JPH3
Synonyms:	CAGL237; HDL2; JP-3; JP3; TNRC22
Mammalian Cell Selection:	Neomycin
Vector:	pCMV6-AC-GFP (PS100010)
E. coli Selection:	Ampicillin (100 ug/mL)



[View online »](#)

ORF Nucleotide
Sequence:

>RG206252 representing NM_020655
Red=Cloning site Blue=ORF Green=Tags(s)

TTTTGTAATACGACTCACTATAGGGCGGCCGGAATTCGTCGACTGGATCCGGTACCGAGGAGATCTGCC
GCC**CGGATCGCC**

ATGTCCAGTGGGGCAGGTTTAATTTTACGACGAGGGTCTACTGTGGAGGCTGGGAGGACGGCAAGG
CGCACGGCCATGGCGTCTGCACCGGCCCAAGGGCCAAGGCGAATACACCGGCTCGTGGAGCCACGGCTT
CGAGGTGCTGGGCGTCTACACCTGGCCAGCGCAACACGTACCAGGGCACCTGGGCGCAGGGCAAGCGC
CACGGCATCGGCCTGGAGAGCAAGGGGAAGTGGGTGTACAAGGGCGAGTGGACGCACGGATTCAAGGGG
GCTACGGGGTGGGGAGTGCAGGGCAACGGGGCCAAATACGAAGGGACCTGGAGCAACGGGCTGCAGGA
CGGCTACGGGACCGAGACCTACTCGACGAGGGACCTACCAGGGCCAGTGGGTGGTGGCATGCGCCAG
GGCTACGGCGTCCGGCAGAGCGTCCCGTATGGCATGGCCGCGGTATCCGCTCACCCCTGAGGACGTCCA
TCAACTCCCTGCGCAGCGAGCACACCAACGGCACGGCGTGCATCCCGACGCCTCTCCGGCGGTGGCCGG
CAGCCCGCGCGTGTCCCGCGGGGCTTCGTGCTCGTGGCCACAGTGACTCCGAGATCCTCAAGAGCAAG
AAGAAGGGGCTGTTTCGGCGCTCGCTGTGAGTGGGCTGAAGCTGCGCAAGTCCGAGTCCAAGAGCAGCC
TGGCCAGCCAACGCAGCAAGCAGAGCTCCTTTCGACGAGGCGGGCATGAGCACCGTCACTCCACGGC
CAGCGACATCCACTCCACCATCAGCCTGGGCGAGGCTGAGGCCGAGTGGCGGTATCGAGGACGACATC
GACGCCACCACCAGGACCTACGTGGGCGAGTGGGAAGAACGACAAACGCTCCGGCTTCGGCGTGAGCC
AGCGCTCGGACGGGCTCAAGTACGAGGGCGAGTGGGCCAGCAACCGGCGCCATGGCTACGGCTGCATGAC
CTTCCCGACGGCACCAAGGAGGAGGGCAAGTACAAGCAGAACATCCTCGTGGCGGCAAGCGCAAGAAC
CTCATCCCCCTGCGGGCCAGCAAGATCCCGGAGAAGGTGGACCGCGCGTGGAGCCGCTGAGCGGGCCG
CCACCACGGCAAGCAGAAGGCTGAGATCGCGGCTTCAGGACCTCCACTCTCGGGCAAGGCCGAGGC
AGCCCTCACAGCAGCTCAGAAAGCCAGGAGGAGGCGCGGATCGCCAGGATCACTGCCAAAGAGTTCTCC
CCTTCTTCCAGCACCGGAAAACGGGCTGGAGTACCAGAGGCCGAAGCGTCAGACCTCCTGTGACGACA
TCGAGGTGCTGTCCACGGGACACCCCTGCAGCAGGAGAGCCCGAGTGTACCGCAAGGGCACCACTCC
CTCCGACCTGACCACCGACGACAGCCCCCTGCAGAGCTTCCCACCGACCCCGCGGCCACCCCGCCGCC
GCGCCCGCCAGGAACAAGGTCGCCCCTTTCGAGGCAGGTGTGGTGGACGAGGAGCGGGGCGGGG
ACATCCAGATGCTCCTGGAGGGCCGGCCGGGACTGCGCCGACGAGTGGGGCGAGGAGCAGGCGGG
GGGCTCCAGGGGTGTCCGACGGTGCCTGCGCGGCGGCTGCTCGTGGATGACTTCCGCACCCGAGGT
TCGGGCGCAAGCAGCCGGGAACCCAAAGCCGCGGGAGCGGCGGACGGAGTCAACCCCGTGTTCACGT
GGACTTCCCACCACCGGCCAGCAACCACAGCCCCGGAGGCTCCAGGCTGCTGGAGCTGCAGGAGGAGAA
GCTGAGCAACTACCGGATGGAGATGAAACCTTGTGAGGATGGAGACGCATCCCCAGAAAAGACGCTAC
AGCAAGGGCGGCGCTGCGGGGCTTGGGGGACGACCACCGCCTCGAGGACCGGGGCTTCGGGGTGCAGA
GACTGCGGTCCAAGGCCAGAACAAAGGAGAATTACGGCCGGCTCCTCCGCGGAGCCCGCGTGCAGAA
ACTGGCGAGCTGCGGCTGGGCGGGGCGAGCCCCGTTGCTGCGTTGGGACTTGACCTTCCCCGCC
CAGAAATCCTTGCTGCTCTAGAGTCCGACGAGGAGAATGGGGATGAGCTCAAGTCCAGTACGGGCT
CAGCGCTATCCTGGTGGTATGGTATCTTGTCAACATCGGAGTCGCCATTCTGTTTATTAATTTTT
CATC

ACGCGTACGCGGCCGCTCGAG - GFP Tag - GTTTAA

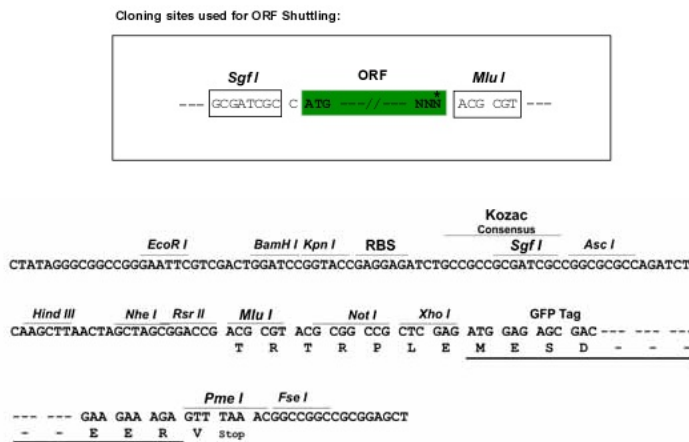
Protein Sequence: >RG206252 representing NM_020655
Red=Cloning site Green=Tags(s)

```
MSSGGRFNFDDGGSYCGGWEDGKAHGHGCTGPKGQGEYTGWSHGFVFLGVYTWPSGNTYQGTWAQGKR
HGIGLESKGGKVVYKGEWTHGFKGRYGVRECAGNGAKYEGTWSNGLQDGYGTETYSDDGTYQGQWVGGMRQ
GYGVRQSVYPYGMAAVIRSPLRTSINSLRSEHTNGTALHPDASPAVAGSPAVSRGGFVLAHSDSEILKSK
KKGLFRRSLLSGLKLRKSEKSSLASQRSKQSSFRSEAGMSTVSSSTASDIHSTISLGEAEAEAVIEDDI
DATTTEYVYGEWKNDKRSFGVSRSDGLKYEGEWASNRRRHGYGCMTPFDGTKEEGKYQNILVGGKRKN
LIPLRASKIREKVDRAVEAAERAATTAKQKAEIAASRTSHSRAKAEAAALAAQKAQEEARARITAKEFS
PSFQHRENGLEYQRPKRQTSRDDIEVLSTGTPLQQESPELYRGTTPSDLTTDDSPQRSFPTSPAATPPP
APAARNKVAHFSRQVSVDEERGGDIQMLLEGRAGDCARSSWGEEQAGGSRGVRSGALRGLLVDDFRTRG
SGRKQPGNPKPRERRTESPPVFTWTSHHRASNHSPGGSRLLELQEEKLSNYRMEMKPLLRMETHPQKRRY
SKGGACRGLGDDHRLDRGFVQRLRSKAQNKENFRPASSAEPVQKLASLRLGGAEPRLLRWDLTFSP
QKSLPVALESDEENGDELKSSTGSAPILVVMVILLNIGVAILFINFFI
```

TRTRPLE - GFP Tag - V

Restriction Sites: SgfI-MluI

Cloning Scheme:



ACCN: NM_020655

ORF Size: 2244 bp

OTI Disclaimer: The molecular sequence of this clone aligns with the gene accession number as a point of reference only. However, individual transcript sequences of the same gene can differ through naturally occurring variations (e.g. polymorphisms), each with its own valid existence. This clone is substantially in agreement with the reference, but a complete review of all prevailing variants is recommended prior to use. [More info](#)

OTI Annotation: This clone was engineered to express the complete ORF with an expression tag. Expression varies depending on the nature of the gene.

Components: The ORF clone is ion-exchange column purified and shipped in a 2D barcoded Matrix tube containing 10ug of transfection-ready, dried plasmid DNA (reconstitute with 100 ul of water).

Reconstitution Method:

1. Centrifuge at 5,000xg for 5min.
2. Carefully open the tube and add 100ul of sterile water to dissolve the DNA.
3. Close the tube and incubate for 10 minutes at room temperature.
4. Briefly vortex the tube and then do a quick spin (less than 5000xg) to concentrate the liquid at the bottom.
5. Store the suspended plasmid at -20°C. The DNA is stable for at least one year from date of shipping when stored at -20°C.

RefSeq: [NM_020655.2](#), [NP_065706.2](#)

RefSeq Size: 3997 bp

RefSeq ORF: 2247 bp

Locus ID: 57338

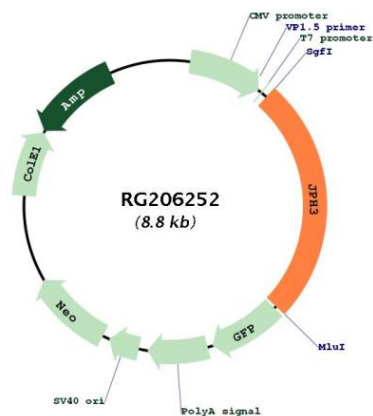
UniProt ID: [Q8WXH2](#)

Cytogenetics: 16q24.2

Protein Families: Druggable Genome, Transmembrane

Gene Summary: Junctional complexes between the plasma membrane and endoplasmic/sarcoplasmic reticulum are a common feature of all excitable cell types and mediate cross talk between cell surface and intracellular ion channels. The protein encoded by this gene is a component of junctional complexes and is composed of a C-terminal hydrophobic segment spanning the endoplasmic/sarcoplasmic reticulum membrane and a remaining cytoplasmic domain that shows specific affinity for the plasma membrane. CAG/CTG repeat expansion from normally 6-28 repeats to 40-59 repeats in the 3' UTR of this gene have been associated with Huntington disease-like 2 (HDL2). This gene is a member of the junctophilin gene family. Alternatively spliced transcript variants have been described for this gene. [provided by RefSeq, Jul 2016]

Product images:



Circular map for RG206252