

## Product datasheet for **RG206212**

### **RNF190 (MARCH10) (NM\_152598) Human Tagged ORF Clone**

#### **Product data:**

Product Type:	Expression Plasmids
Product Name:	RNF190 (MARCH10) (NM_152598) Human Tagged ORF Clone
Tag:	TurboGFP
Symbol:	RNF190
Synonyms:	MARCH-X; MARCH10; RNF190
Mammalian Cell Selection:	Neomycin
Vector:	pCMV6-AC-GFP (PS100010)
E. coli Selection:	Ampicillin (100 ug/mL)



[View online »](#)

**ORF Nucleotide  
Sequence:**

&gt;RG206212 representing NM\_152598.

Blue=ORF Red=Cloning site Green=Tag(s)

```

GCTCGTTTAGTGAACCGTCAGAATTTTGTAAACGACTCACTATAGGGCGGCCGGGAATTCGTGACTG
GATCCGGTACCGAGGAGATCTGCCGCCCGCATCGCC
ATGTTGCATGACGCAAGGGACAGGCAGAAGTTCTTCAGCGATGTTCAAGTATCTGCGGGACATGCAGCAT
AAGGTGGACTCTGAGTATCAGGCTTGCTGAGACGACAGGAATATAGAAGAGACCCAAATGAGAAGAAA
CGCGATCAGTTTTGGGGCAAGAGACAAGTTTTGAGAGATCCCGTTTTCTAGCAGGTCACTTCCAAA
CAGAGTCTAGTGAGGAGGATGCTCTAACTGAACCAAGGTCATCTATCAAGATATCTGCATTTAAGTGT
GACTCCAAACTTCCAGCAATTGACCAAACATCAGTCAAGCAGAAACATAAAAGTACCATGACTGTAAGG
AAAGCAGAGAAAGTGGACCCAGCGAACCTCTCCAGCAGACCAAGCACCATGGTTTTATTAAGAAAG
AGGAAGCCAAACCTGAGGAGATTTACAGTCAGCCAGAATCGCACAGCCGAGAGCATCTGGGGACAGA
AGCAGACAGAAACAGCAGTGGCCTGCAAAGGTGCCGTTCCAGGGGAGCAGATCAAGTAGTTCAACAA
GAAGGCCCTGATGTAACTAAGCTGAAGAGGCCAAATCAAGAGAGAAGAACTTGGTCCCATCGTCA
CAGCCAATGACTGAGAACGCCCTGATAGAGCCAAAAAGGAGACCCGAGTGCTCCTTCCAGAGTGAG
CTGCATCCAGCCCTGTCCAGGCCCTCCAAGGAAAAAATAGTCCTCAAGTATTGAGTGAGTTCTCGGG
CCACCACTCACACCCACCACTGTAGGAGGGCCAAGAAAGGCATCATTTAGGTTCCGAGATGAAGACTTT
TATTCCATTTTGTCAATGAACAGCAGAAGAGAAAGCGATGACACTGAAGAGGAAACCCAGTCTGAAGAA
TGTCTGTGGGTTGGTGTGCGCTCACCTGTTCTCCTTCCCATCACAAAAGAAGTAGATTTGGGGGACA
TCGACCCCTCAGGCCAAAAATAAAATTTGAAGAAAATGCTGAAAATTCAGAGGTCATTCTTCAAGA
AGAAGTGAGCCAGTCAATGGCTCATTGAGAATAAGCAATGCAATGGAGCCAGCAACAGAGCGCCTTCT
GCTGGGCAAAGGTTGTCCAAGACCCCGGGCTGCCTGATAGGGAATCTGCTACAGAGAAGGACAGAGGT
GCCAGTGAAAATGCGAAAAAGGCCCTCTTTCGTGGGACACCAAAATCCGAGCCAGACAAGAGGTTGGT
GTCAATGCTGAAAATGTATGGAGTGATTGATTTCTGTGGAACATAGGCCCTGGCACCCATGATTCTGAA
GGATACTGAAAAGACTATTTAAACAGTTCTCAAAATCTCTTGACTACTTTATTTCTGGCAGACCAATA
TCTCCAAGATCATCAGTGAATTCATCTATAACCTCCTGCATCATTGATGACTGCTGCTGAGAGAT
GATATTCCAGTAGACTTGTCAATGTGATCGACTTCAGTTCACAGCTCAGACTCAGAGGAAAACCTCAGGG
TTTCATGTTTGCCAACCACTGTCTCCATTAGAAATAGGACTCCATTTGCCAGTGCCGAAAACATAAT
TATTTCCAGTAAACAGTGCACACGAATTTGCTGTCAGGGAAGCAGAAGATACTACTTTAACAAGCCAG
CCTCAGGGGGCTCCACTATATACAGATCTTACTAAATCCACAGGGCAATTTGCTTAGTGGATTCT
TCCAGCTCCTCTCCATCAAGAATGAACTCAGAAGGCCATTTGCATGTGTCTGGTCTCTGCAAGAAAAT
ACACCATTTACTTTCTTTGCAAGTGTCTCATTTCCAAATCAAAATGATAATGGGAGCAGGATGGCAGCC
TCTGGTTTCACAGATGAAAAGGAAACAGTAAGATAAAGGCAGACCCTGAGAAAATCAAGAAATTGCAA
GAAAGTCTCCTGGAGGAGGACTCCGAGGAGGAGGGAGACTTGTGTGCGATCTGTGAGATAGCCGGGGT
TCCCAAGCAACCCCTCCTGGAGCCTTGGGCTGTGTGGGAAGCCTGCAGTTTGTTCATCAAGAGTGC
CTGAAAAAGTGGCTGAAAGTAAAAATAACATCAGGAGCAGATCTTGGTGCCGTGAAGACCTGTGAGATG
TGTAAGCAAGGCTGTGGTTGACCTGGGTGACTTTAACATGATTGAGTTCTACCAAGACACCAGCAA
TCTCAGGCACAAAACGAGCTGATGAATTCAGGCTTGTACCTGGTGTGCTGCTTACCTCTATGAGCAG
AGGTTTGCAGAACTCATGAGGCTCAACCAACACAGGTGGAAGAGAGAGGTTGTCAAGAAATTACCCA
CAACCCAGAACAGAGGAAAATGAAAATTCGGAGTTGGGAGATGGAATGAAGGCAGCATTCTCAAAGC
CAGGTCGTC

```

**ACGCGT**ACGCGGCCGCTCGAG – GFP Tag – GTTTAAAC

**Protein Sequence:** >Peptide sequence encoded by RG206212  
Blue=ORF Red=Cloning site Green=Tag(s)

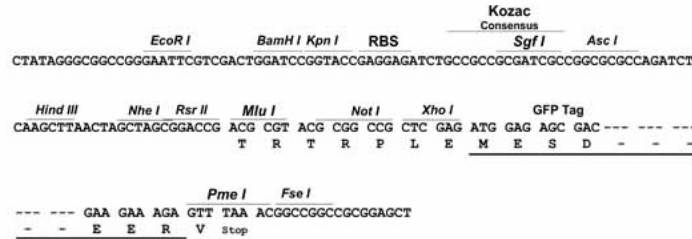
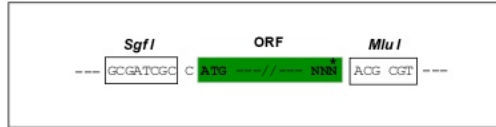
MLHDARDRQKFFSDVQYLQDMQHKVDSEYQAQLRRQEYRRDPNEKKRDQFWGQETSFERSRFSSRSSK  
QSSSEEDALTEPRSSIKISAFKCDKSLPAIDQTSVKQKHKSTMTVRKAEKVDPSEPSADQAPMVLLRK  
RKPPLRRFTVSPESHSPRASGDRSRQKQWPAKVPVPRGADQVVQEQGLMCNTLKRPNQERRNLVPSS  
QPMTENAPDRAKKGDPSAPSQSELHPALSQAFQGNKSPQVLEFSGPPLTPPTTVGGPRKASFRFRDEDF  
YSILSLNSRRESDDTEETQSEELWVGVRSPCSPSHHKRSRFGGTSTPQAKNKNFEENAENCRGHSSR  
RSEPSHGSLRISNAMEPATERPSAGQRLSQDPGLPDRESATEKDRGGSSENAKKSPLSWDTKSEPRQEVG  
VNAENVWSDCISVEHRPGTHDSEGYWKDYLNSSQNSLDYFISGRPISPRSSVNSSYNPPASFMSALRD  
DIPVDLSMSSTSVHSSDSEGNMGFHCQPLSPIRNRTPFASAENHNYFPVNSAHEFAVREAEDTTLTSQ  
PQGAPLYTDLLLNPQGNLSLVDSSSSSPSRMSEGHLHVSGSLQENTPFTFFAVSHFPNQNDNGSRMAA  
SGFTDEKETSNIKADPEKLLKLEESLEEDSEEGDLCRICQIAGGSPSNLLEPCGCVGSLQFVHQC  
LKKWLKVKITSGADLGAVKTCMCKQGLLVDLGDVNMIEFYQKHQSQAQNELMNSGLYL VLLLHLVEQ  
RFAELMRLNHNQVERERLSRNYPQPRTEENENSELGDGNEGSISQSQVV

TRTRPLEMESDESGLPAMEIECRITGTLNGVEFELVGGGEGTPEQGRMTNKMSTKGALTFSPYLLSHV  
MGYGFYHFGTYPSTYENPFLHAINNGGYTNRIEKYEDGGVLHVSFSYRYEAGRVIGDFKVMGTGFPEP  
SVIFTDKIIRSNAIVEHLHPMGDNDLDGSFTRTFSLRDGGYSSVVDSHMFKSAIHPISILQNGGPMFA  
FRRVEEDHSNTELGIVEYQHAFKTPDADAGEERV

**Restriction Sites:** SgfI-MluI

**Cloning Scheme:**

Cloning sites used for ORF Shutting:



**ACCN:** NM\_152598

**ORF Size:** 2424 bp

**OTI Disclaimer:** The molecular sequence of this clone aligns with the gene accession number as a point of reference only. However, individual transcript sequences of the same gene can differ through naturally occurring variations (e.g. polymorphisms), each with its own valid existence. This clone is substantially in agreement with the reference, but a complete review of all prevailing variants is recommended prior to use. [More info](#)

**OTI Annotation:** This clone was engineered to express the complete ORF with an expression tag. Expression varies depending on the nature of the gene.

**Components:** The ORF clone is ion-exchange column purified and shipped in a 2D barcoded Matrix tube containing 10ug of transfection-ready, dried plasmid DNA (reconstitute with 100 ul of water).

**Reconstitution Method:**

1. Centrifuge at 5,000xg for 5min.
2. Carefully open the tube and add 100ul of sterile water to dissolve the DNA.
3. Close the tube and incubate for 10 minutes at room temperature.
4. Briefly vortex the tube and then do a quick spin (less than 5000xg) to concentrate the liquid at the bottom.
5. Store the suspended plasmid at -20°C. The DNA is stable for at least one year from date of shipping when stored at -20°C.

**RefSeq:** [NM\\_152598.4](#)

**RefSeq Size:** 3090 bp

**RefSeq ORF:** 2427 bp

**Locus ID:** 162333

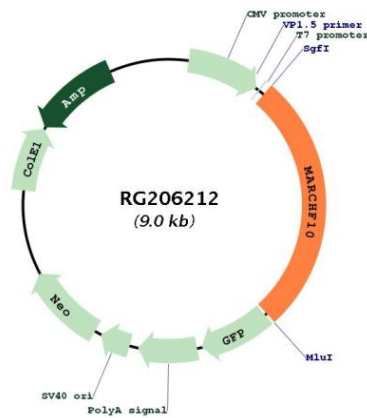
**UniProt ID:** [Q8NA82](#)

**Cytogenetics:** 17q23.2

**MW:** 90.5 kDa

**Gene Summary:** MARCH10 is a member of the MARCH family of membrane-bound E3 ubiquitin ligases (EC 6.3.2.19). MARCH enzymes add ubiquitin (see MIM 191339) to target lysines in substrate proteins, thereby signaling their vesicular transport between membrane compartments (Morokuma et al., 2007 [PubMed 17604280]).[supplied by OMIM, Apr 2010]

**Product images:**



Circular map for RG206212