

## Product datasheet for **RG206176**

### **HIPK1 (NM\_181358) Human Tagged ORF Clone**

#### **Product data:**

Product Type:	Expression Plasmids
Product Name:	HIPK1 (NM_181358) Human Tagged ORF Clone
Tag:	TurboGFP
Symbol:	HIPK1
Synonyms:	Myak; Nbak2
Mammalian Cell Selection:	Neomycin
Vector:	pCMV6-AC-GFP (PS100010)
E. coli Selection:	Ampicillin (100 ug/mL)



[View online »](#)

**ORF Nucleotide Sequence:**

>RG206176 representing NM\_181358  
 Red=Cloning site Blue=ORF Green=Tags(s)

TTTTGTAATACGACTCACTATAGGGCGGCCGGAATTCGTCGACTGGATCCGGTACCGAGGAGATCTGCC  
 GCC**CGCATCGCC**

ATGGTTTTGATGTTTCAGATTCTGTATATTTTACAAACACAAGGCTTGCCAGCTGAATATCTTCTCAGTG  
 CCGGAACAAAAACAACCGGTTTTTCAACAGAGATCCTAATTTGGGGTACCCACTGTGGAGGCTTAAGAC  
 ACCTGAAGAACATGAACTGGAGACTGGAATAAAATCAAAAAGAAGCTCGGAAGTACATTTTTAATTGCTTA  
 GATGACATGGCTCAGGTGAATATGTCTACGGACCTGGAGGGAACAGACATGTTGGCAGAGAAGGCAGACC  
 GAAGAGAATACATTGATCTGTTAAAGAAAATGCTCACAATTGATGCAGATAAGAGAATTACCCCTCTAAA  
 AACTCTTAACCATCAGTTTGTGACAATGACTCACCTTTTGGATTTTCCACATAGCAATCATGTTAAGTCT  
 TGTTTTCAGAACATGGAGATCTGCAAGCGGAGGGTTTACATGTATGATACAGTGAGTCAGATCAAGAGTC  
 CCTTCACTACACATGTTGCCCAAATAACAAGCACAAATCTAACCATGAGCTTCAGCAATCAGCTCAATAC  
 AGTGCACAATCAGGCCAGTGTCTAGCTCCAGTTCTACTGCAGCAGCTGCTACTCTTCTCTGGCTAAT  
 TCAGATGTCTCACTACTAACTACCAGTCAGCTTTGTACCCATCATCTGCTGCACCAGTTCTGGAGTTG  
 CCCAGCAGGGTGTTCCTTGCAGCCTGGAACCACCCAGATTTGCACTCAGACAGATCCATTTCCAACAGAC  
 ATTTATAGTATGTCCACCTGCGTTTCAAAGTGGACTACAAGCAACAACAAGCATTCTGGATTCCCTGTG  
 AGGATGGATAATGCTGTACCAATTGTACCCAGGCACCAGCTGCTCAGCCACTACAGATTCAGTCAGGAG  
 TTCTCACGCAGGGAAGCTGTACACCACTAATGGTGAACAATCTCCACCCTCAAGTAGCCACCATCACACC  
 GCAGTAGCGGTGCCCTTACTCTGAGCTGCGCAGCCGGCCGGCCGGCGTGGTTGAACAGACTGCCGCT  
 GTACTGCAGGCGTGGCCTGGAGGGACTCAGCAAATCTCCTGCCTCAACTTGGCAACAGTTGCCTGGGG  
 TAGCTTACACAACCTGTCCAGCCCACAGCAATGATTCCAGAGGCCATGGGGAGTGGACAGCTGAGTGC  
 TGACTGGAGGAATGCCCACTCTCATGGCAACCAGTACAGCACTATCATGCAGCAGCCATCCTTGCTGACT  
 AACCATGTGACATTGGCCACTGCTCAGCCTCTGAATGTTGGTGTGCCATGTTGTCAGACAACAACAAT  
 CCAGTTCCCTCCCTCGAAGAAGAATAAGCAGTCAGCTCCAGTCTCTTCCAAGTCTCTAGATGTTCT  
 GCCTTCCAAGTCTATTCTCTGGTTGGGAGCAGTCCCCTCCGCACCACATCTTCTATAATTCTTGGTC  
 CCTGTCCAAGATCAGCATCAGCCATCATCATTCCAGATACTCCAGCCCTCCTGTGAGTGTCACTACTA  
 TCCGAAGTGACACTGATGAGGAAGAGGACAACAATAACAAGCCAGTAGCTCTGGACTGAAGCCAAGGTC  
 TAATGTCATCAGTTATGTCAGTCAATGATTCTCCTGACTCTGACTCTTCTTTGAGCAGCCCTATTCC  
 ACTGATACCTGAGTGTCTCCGAGGCAATAGTGGATCCGTTTTGGAGGGCCTGGCAGAGTTGTGGCAG  
 ATGGCACTGGCACCCGCACTATCATTGTGCCTCCACTGAAAACCTCAGCTTGGTGACTGCACTGTAGCAAC  
 CCAGGCCTCAGGTCTCCTGAGCAATAAGACTAAGCCAGTCGCTTCAAGTGTGGGAGTCACTCTGGATGC  
 TGTATACCCCCACAGGGTATCGAGCTCAACGCGGGGGACCAGTGCAGCACAACCACTCAATCTTAGCC  
 AGAACCAGCAGTCATCGGTGGCTCCAACCTCACAGGAGAGAAGCAGCAACCCAGCCCCCGCAGGCAGCA  
 GGCGTTTTGTGGCCCTCTCTCCAAGCCCCCTACACCTTCCAGCATGGCAGCCCGCTACACTCGACAGGG  
 CACCCACACCTTGCCCCGGCCCTGCTCACCTGCCAAGCCAGGCTCATCTGTATACGTATGCTGCCCCGA  
 CTTCTGCTGCTGCACTGGGCTCAACCAGCTCCATTGCTCATCTTTTCTCCCCACAGGGTTCTCAAGGCA  
 TGCTGCAGCCTATACCACTCACCTAGCACTTTGGTGCACCAGGTCCTGTCAGTGTGGGCCAGCCTC  
 CCACTTCTGCCAGCGTGGCCCTGCTCAGTACCAACACCAGTTTGCACCCAATCCTACATTGGTCTT  
 CCCGAGGCTCAACAATTTACTGATACCCGCTGAGTCTACCAAGATCAGCCAGTATTCTACTTA

**ACGCGT**ACGCGGCCGCTCGAG – GFP Tag – GTTTAA

**Protein Sequence:** >RG206176 representing NM\_181358  
Red=Cloning site Green=Tags(s)

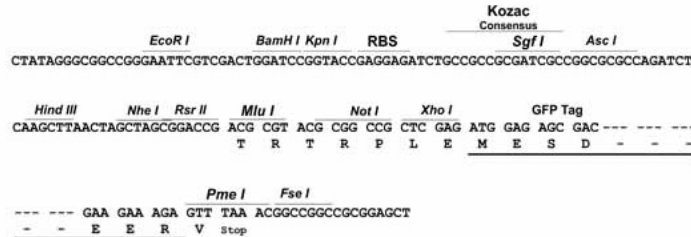
MVLMFQIRYISQTQGLPAEYLLSAGTKTTRFFNRDPNLGYPLWRLKTPEEHELETGIKSKEARKYIFNCL  
DDMAQVNMSTDLEGTDLAEKADRREYIDLLKKMLTIDADKRITPLKTLNHQFVTMTHLLDFPHSNHVKS  
CFQNMIEICKRRVHMYDTVSQIKSPFTTHVAPNTSTNLTMSFSNQLNTVHNQASVLASSSTAAAATLSLAN  
SDVSLLNYSALYPSSAAPVPGVAQQGVSLQPGTTQICTQTDPFQQTFFIVCPPAFQTGLQATTKHSGFPV  
RMDNAVPIVPQAPAAQPLQIQSGVLTQGSCTPLMVATLHPQVATITPQYAVPFTLSAAGR PALVEQTAA  
VLQAWPGGTQQILLPSTWQQLPGVALHNSVQPTAMIPEAMGSGQLADWRNAHSHGNQYSTIMQQPSLLT  
NHVTLATAQPLNVGAHVVRQQSSSLPSKKNKQSAPVSSKSSLDVLPVSYSLVGSPLRRTSSYNSLV  
PVQDQHQP I IIPDTPSPVSVITIRSDTDEEEDNKYKSSSGLKPRSNVISYVTVNDSPDSDSLSPYS  
TDTLSALRNGSGSVLEGPGRVVADGTGTRT I IVPPLKTQLGDCTVATQASGLLSNKT KPVASVSGQSSGC  
CITPTGYRAQRGGTSAAPLNL SQNQSSVAPTSQERSSNPAPRRQAFVAPLSQAPYTFQHGSPLHSTG  
HPhLAPAPAHLP SQAHL YTYAAPT SAAALGSTSSIAHLFSPQGSSRHAAYTTHPSTLVHQVVPVSVGPSL  
LTSASVAPAQYQH QFATQSYIGSSRGSTIYTGYP L SPTKISQYSYL

TRTRPLE - GFP Tag - V

**Restriction Sites:** SgfI-MluI

Cloning Scheme:

Cloning sites used for ORF Shutting:



ACCN: NM\_181358

ORF Size: 2448 bp

OTI Disclaimer: The molecular sequence of this clone aligns with the gene accession number as a point of reference only. However, individual transcript sequences of the same gene can differ through naturally occurring variations (e.g. polymorphisms), each with its own valid existence. This clone is substantially in agreement with the reference, but a complete review of all prevailing variants is recommended prior to use. [More info](#)

OTI Annotation: This clone was engineered to express the complete ORF with an expression tag. Expression varies depending on the nature of the gene.

Components: The ORF clone is ion-exchange column purified and shipped in a 2D barcoded Matrix tube containing 10ug of transfection-ready, dried plasmid DNA (reconstitute with 100 ul of water).

**Reconstitution Method:**

1. Centrifuge at 5,000xg for 5min.
2. Carefully open the tube and add 100ul of sterile water to dissolve the DNA.
3. Close the tube and incubate for 10 minutes at room temperature.
4. Briefly vortex the tube and then do a quick spin (less than 5000xg) to concentrate the liquid at the bottom.
5. Store the suspended plasmid at -20°C. The DNA is stable for at least one year from date of shipping when stored at -20°C.

**RefSeq:** [NM\\_181358.1](#), [NP\\_852003.1](#)

**RefSeq Size:** 6802 bp

**RefSeq ORF:** 2451 bp

**Locus ID:** 204851

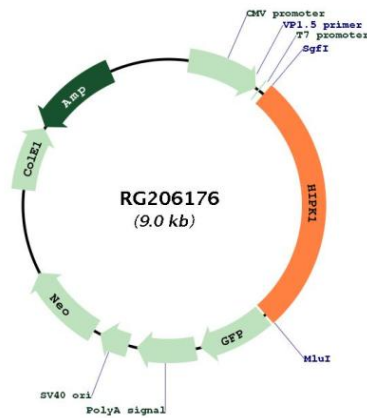
**UniProt ID:** [Q86Z02](#)

**Cytogenetics:** 1p13.2

**Protein Families:** Druggable Genome, Protein Kinase, Transcription Factors

**Gene Summary:** The protein encoded by this gene belongs to the Ser/Thr family of protein kinases and HIPK subfamily. It phosphorylates homeodomain transcription factors and may also function as a co-repressor for homeodomain transcription factors. Alternative splicing results in four transcript variants encoding four distinct isoforms. [provided by RefSeq, Jul 2008]

**Product images:**



Circular map for RG206176