

Product datasheet for **RG206173**

RAB11FIP5 (NM_015470) Human Tagged ORF Clone

Product data:

Product Type:	Expression Plasmids
Product Name:	RAB11FIP5 (NM_015470) Human Tagged ORF Clone
Tag:	TurboGFP
Symbol:	RAB11FIP5
Synonyms:	gaf-1; GAF1; pp75; rab11-FIP5; RIP11
Mammalian Cell Selection:	Neomycin
Vector:	pCMV6-AC-GFP (PS100010)
E. coli Selection:	Ampicillin (100 ug/mL)



[View online »](#)

ORF Nucleotide Sequence:

>RG206173 representing NM_015470
 Red=Cloning site Blue=ORF Green=Tags(s)

TTTTGTAATACGACTCACTATAGGGCGGCCGGGAATTCGTCGACTGGATCCGGTACCGAGGAGATCTGCC
 GCC**GCGATCGCC**

ATGGCCCTGGTGCGGGGCGGGAGCCGGCGGGCCCTCCCGCTGGCTGCCACGCACGTCCAGGTGA
 CGGTGCTGCGGGCCCGGGCTGCGGGCAAGAGCTCGGGAGCGGGCAGCACACGCGACGGTACACGGT
 GATCCAGGTGGGCGCGAGAAGTACAGTACGTCCGGTGGTGGAGAAGACGCACGGCTGTCCCGAGTGGCGT
 GAGGAGTGCTCCTTCGAGCTGCCCGGGGGCCCTGGATGGCCTGCTGCGGGCGCAGGAGGCCGACGCGG
 GCCCGGCCCTGGGCGCGAGCTCCGCCCGCCCTGCGAGCTGGTGTCAACCACATGCACCGCTCGCT
 CATCGCGTGCACAAGTTCCTGGGCCAGGCCACGGTGGCCTGGACGAGGTCTTCGGCGCAGGCCCGGCC
 CAGCACACGCAGTGTACAAGCTGCACTCCAAGCCAGGCAAGAAGGAGAAGGAACCGGCGAGATTGAAG
 TCACCATCCAGTTCACGCGCAACAACCTGAGCGCCATGTTTGACCTGTCCATGAAGGACAAGCCAAGGTC
 TCCCTTCAGCAAGATCAGGGACAAGATGAAGGGCAAGAAGAAGTATGATCTGGAATCTGCCTCTGCCATC
 CTCCAAGCAGCGCCATAGAGGATCCTGACCTGGGCAGCCTGGGCAAGATGGGCAAGCCAAAGGCTTCT
 TCCTCCGCAACAAGCTGCGCAAGTCGTCCTGACCCAGTCCAACACCTCGCTGGGCTCGGACAGCACCT
 GTCCTCAGCCAGCGGGAGCTTGGCTACCAAGGACCTGGCGCCGAACCTCACCCGCTACCAAGCCGT
 AGCAGTGGCTGTCCACTGAAGGGGGCAGGGACTCTGCACAGTCCCCAAGCTGTTACCCATAAGAGGA
 CCTACAGCGATGAGGCCAACAGATGCGAGTGGCTCCTCCTCGGGCCCTTCTGGACCTTCAGGGCCACT
 GGATGTGCCTCCCGCTTTCGCTCTGTGTCAATGGGAGCCACATTTACAATGAGGAGCCCCAGGGCCCT
 GTGCGGCACCGCAGCTCCATCTCGGGCTCGCTTCATCCTCTGGCTCCTTGCAAGCTGTCTTCCCGGT
 TCTCCGAGGAGGGCCCTCGTCCACAGATGACACCTGGCCAGAGGCAGTCGTAGCAACAGCAGCTCAGA
 GGCAGTGTGGACAGGAGGAGCTGAGTGTCTCAGGCTAAAGTCTGGCCCTGGGGCCAGCCACCTGGA
 GAGGAGGAGGGGCCCGGCTACCAGAGGGCAAGCCAGTCCAGGTTGCCACACCCATAGTGGCTCCTCTG
 AGGCTGTGGCAGAGAAGGAGGGAGCCGGAAGGAGGAACGCAAGCCCGGATGGGTCTTCCACCACCA
 CCACCAAGGCCTAAGTCGGAGCGAGTTGGGTCGCCGAAGCTCTCTGGGGAAAAGGGGGTCCCATCCTG
 GGGCCTCCACATCACTCATCCAGTGGGAGGGAAAGGCCAAGAGTAGCTGGTTTGGCTTGAGAGAAG
 CCAAGGACCCGACTCAGAAACCCAGTCCCACCCCGTGAAGCCCTCAGTGCCGCCCTGTGGAGGGCAG
 CCCCAGACGGAAGCAGTCCCGCTCCAGTCTGAGCATAGCCCTGAGCAGTGGGCTGGAGAAGCTCAAAACA
 GTCACATCTGGGAGCATTAGCCTGTGACCCAGGCCCCCAGGCTGGCCAGATGGTGGACACCAAAAGGC
 TGAAGGACTCAGCTGTGCTGGACCAGTCGGCCAAGTACTACAACCTGACCACGATGAGCTCATAGCCT
 GCTCCTGCAGCGGGAGCGGGAGCTGAGCCAGCGGGACGAGCATGTGCAGGAGCTGGAGAGCTACATCGAC
 CGGCTGTGGTGGGATCATGGAGACCTCACCCAGCTGTGCAGATCCCCCGGGCCCCCCCCAAAAGCG
 GACCG

AG**CGGACCG**ACGCGTACGCGGCCGCTCGAG – GFP Tag – GTTTAA

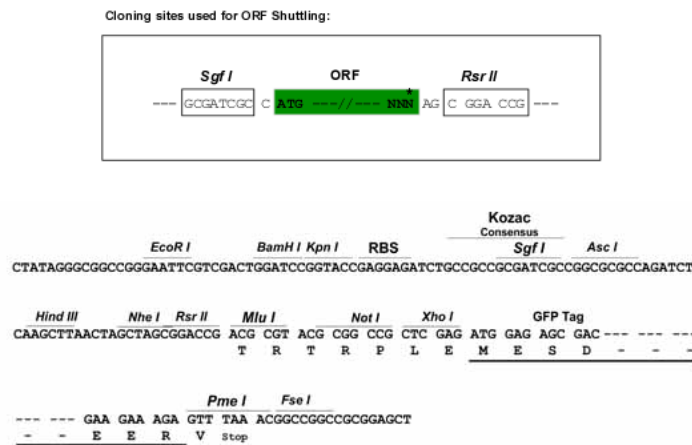
Protein Sequence: >RG206173 representing NM_015470
 Red=Cloning site Green=Tags(s)

MALVRGAEPAAGPSRWLPTHVQVTVLRARGLRGKSSGAGSTSDAYTVIQVGREKYSTSVVEKTHGCPWR
 EECSEFELPPGALDGLLRAQEADAGPAPWAASSAAACELVLTMMHRSLIGVDKFLGQATVALDEVFGAGRA
 QHTQWYKLSKPGKKEKERGEIEVTIQFTRNNLSAMFDLSMKDKPRSPFSKIRDKMKGKKKYDLESASAI
 LPSSAIEDPDLGSLGKMGKAKGFFLRNKLKSSLTQSNTSLGSDSTLSSASGLAYQGPAGELLTRSPSR
 SSWLSTEGGRDSAQSPKLFTHKRTYSDEANQMRVAPPRALLDLQGHLDAA SRSSL CVNGSHIYNEEPQGP
 VRHRSSI SGLSPSSGSLQAVSSRFSEEGPRSTDDTWPRGSRNSSEAVLGQEELSAQAKVLAPGASHPG
 EEEGARLPEGKPVQVATPIVASSEAVA EKEGARKEERKPRMGLFHHHQGLSRSELGRRSSLGEKGGPIL
 GASPHSSSGEGKAKSSWFLREAKDPTQKPSHPVKPLSAAPVEGSPDRKQSRSSL SIALSSGLEKLT
 VTSGSIQPVTQAPQAGQMVDTKRLKDSAVLDQSAKYNYLTHDELISLLLRERELSQRDEHVQELESYID
 RLLVRIMETSPTLLQIPP GPPKSGP

SGP TRRRLE - GFP Tag - V

Restriction Sites: SgfI-RsrII

Cloning Scheme:

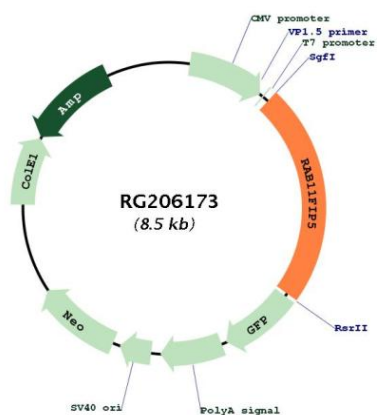


ACCN: NM_015470

ORF Size: 1965 bp

OTI Disclaimer:	<p>Due to the inherent nature of this plasmid, standard methods to replicate additional amounts of DNA in E. coli are highly likely to result in mutations and/or rearrangements. Therefore, OriGene does not guarantee the capability to replicate this plasmid DNA. Additional amounts of DNA can be purchased from OriGene with batch-specific, full-sequence verification at a reduced cost. Please contact our customer care team at custsupport@origene.com or by calling 301.340.3188 option 3 for pricing and delivery.</p> <p>The molecular sequence of this clone aligns with the gene accession number as a point of reference only. However, individual transcript sequences of the same gene can differ through naturally occurring variations (e.g. polymorphisms), each with its own valid existence. This clone is substantially in agreement with the reference, but a complete review of all prevailing variants is recommended prior to use. More info</p>
OTI Annotation:	<p>This clone was engineered to express the complete ORF with an expression tag. Expression varies depending on the nature of the gene.</p>
Components:	<p>The ORF clone is ion-exchange column purified and shipped in a 2D barcoded Matrix tube containing 10ug of transfection-ready, dried plasmid DNA (reconstitute with 100 ul of water).</p>
Reconstitution Method:	<ol style="list-style-type: none">1. Centrifuge at 5,000xg for 5min.2. Carefully open the tube and add 100ul of sterile water to dissolve the DNA.3. Close the tube and incubate for 10 minutes at room temperature.4. Briefly vortex the tube and then do a quick spin (less than 5000xg) to concentrate the liquid at the bottom.5. Store the suspended plasmid at -20°C. The DNA is stable for at least one year from date of shipping when stored at -20°C.
RefSeq:	<p>NM_015470.1, NP_056285.1</p>
RefSeq Size:	<p>4340 bp</p>
RefSeq ORF:	<p>1962 bp</p>
Locus ID:	<p>26056</p>
UniProt ID:	<p>Q9BXF6</p>
Cytogenetics:	<p>2p13.2</p>
Protein Pathways:	<p>Endocytosis</p>
Gene Summary:	<p>Rab effector involved in protein trafficking from apical recycling endosomes to the apical plasma membrane. Involved in insulin granule exocytosis. May regulate V-ATPase intracellular transport in response to extracellular acidosis.[UniProtKB/Swiss-Prot Function]</p>

Product images:



Circular map for RG206173