

## Product datasheet for **RG206133**

### **CATSPER1 (NM\_053054) Human Tagged ORF Clone**

#### **Product data:**

Product Type:	Expression Plasmids
Product Name:	CATSPER1 (NM_053054) Human Tagged ORF Clone
Tag:	TurboGFP
Symbol:	CATSPER1
Synonyms:	CATSPER; SPGF7
Mammalian Cell Selection:	Neomycin
Vector:	pCMV6-AC-GFP (PS100010)
E. coli Selection:	Ampicillin (100 ug/mL)



[View online »](#)

**ORF Nucleotide Sequence:**

>RG206133 representing NM\_053054  
 Red=Cloning site Blue=ORF Green=Tags(s)

TTTTGTAATACGACTCACTATAGGGCGGCCGGGAATTCGTCGACTGGATCCGGTACCGAGGAGATCTGCC  
 GCC**CGGATCGCC**

ATGGATCAAACCTCAGTGCCTGAAAAGGCTCAGAATGAGGCAGACACAAATAATGCAGATAGGTTCTTTC  
 GCTCTCACTCATACCCCCACACCACAGGCCAGGCCACAGCAGAGCTCTCCACCATTACGAGTTGCACCA  
 TCACGGCGTGCCCCACCAACGTGGTGAATCTCACCACCCTCCGGAGTTCCAAGACTTCCACGACCAAGCC  
 TTGTCTCCCATGTCCACCAATCTCACCACCACAGCGAGGCACGGAATCACGTGAGGCCATGGCCCCA  
 CAGGCTTTGGTCTGGCTCCCTCTCAAGGCGCCGTCCTCCACCCTTCTACGGTGAGGACTACCATGA  
 TGAGCTCAAACGTGATGGCAGGAGGCATCATGATGGGTCCAATACAGTGGGTTCCATCAGCAGAGTGAC  
 TCCATTACCATAGGGGGTCTCACCATGGCAGACCCCAATATCTCGGTGAGAATTTATCCCACTATTCT  
 CTGGCGTGCCCCACCACGGTGAGGCTTCCACCATGGTGGTCTACCTCCCCATGGACCAATCCCTA  
 CAGTGAGTCTTCCACCACAGCGAGGCTTCCACCTTAGCGGGCTCCAACACGATGAGTCCAGCATCAC  
 CAAGTCCCCACCGTGGCTGGCCCCACCATCACCAGTCCACCACCATGGCAGGTCCTGATCATGAAG  
 CCCACCAGCATGAAAAGTCTCCTCATCAGGAGAGACCATTTCCCTCATTCTCTGTGGGGTCTACCA  
 GCGTGGGATATCTGACTATCACAGCGAGTACCACCAAGGTGATCACCACCCAGTGAGTACCACCATGGC  
 GACCATCCCCACACACAGCACCCTACCACCAGACCACCGGACCGAGACTACCATCAGCACCAG  
 ACCACCACGGCGGTATCATTCCAGTTACCTCCATGGCGACTACGTCCAGAGCACTTCCAACTCTCTAT  
 CCCACACACATCCCGAGCCTGATTCACGATGCCCCGGCCCTGCTGTTCTCGTACAGGAGTCTTCCC  
 TATCACGTAGCACACCCACGGGGCTCGGCTCACAGCATGACTCGTCTCCAGCACAATCCGCTCACGTG  
 TCACCCAGATGTCCAAAAAAGTCCATACCCAGGATATCTCCACCAACATTCAGAAGACTGGGGCAAAGA  
 AGAAGGGCAATTTCAGAAACGCAAAACCGCGGCTCCAGCGGACCCGCAAGAAGGGACACTCTACCAAT  
 CTCTTCCAGTGGCTGTGGAAAAGCTAACCTTCTCATTACGGGCTTCCGGGAAATGATCCGGAACCTGA  
 CCCAATCCTTGGCCTTTGAACTTTTCTTCTTCTGTTGTCTGCCTCAACACCGTCATGCTGGTGGCCCA  
 GACCTTCGCTGAAGTCGAGATCCGGGGGAGTGGTACTTCATGGCCTTGGACTCCATATTCTTCTGCATC  
 TACGTGGTGAAGCCCTGCTCAAGATCATCGCCCTGGGCTCTCGTACTTCTTGACTTCTGGAACAATT  
 TGGACTTCTTATTATGGCCATGGCCGTGCTGGACTTCTTGTGATGCAGACCCACTCTTCGCCATCTA  
 CCACAAAGCCTTCCGGATCCTCAAGGTCTTCAAGAGCCTGCGGGCCCTGAGGGCAATCCGGTCCCTG  
 CGGAGGCTCAGCTTCTGACCAGCGTCCAGGAAGTGACAGGGACCCTGGGCCAGTCTTGGCGTCCATCG  
 CAGCCATCCTCATCCTCATGTTTACCTGCCTTCTCCTTCTCCGCGGTCTCCGGGCACTGTTCCGCAA  
 ATCTGACCCCAAGCGCTTCCAGAACATTTACCACCATCTTACCCTTCTCACCTTGTCTCAGCTGGAT  
 GACTGGTCCCTCATCTACATGGACAGCCGTGCCAGGGCGCTGGTACATCATTCCCATCCTCATAATTT  
 ACATCATCATCCAGTACTTCTTCTCAACCTGGTACTTACTGTCTGGTGGATAGCTTCCAGACGGC  
 GCTGTTCAAAGGCCTTGAGAAAGCGAAGCAGGAGAGGGCCCGCGGATCCAAGAGAAGCTGCTGGAAGAC  
 TCACTGACGGAGCTCAGAGCTGCAGAGCCAAAGAGGTGGCGAGTGAAGGACCATGCTGAAGCGGCTCA  
 TCGAAAAAAGTTTGGGACCATGACTGAGAAGCAGCAGGAGCTCTGTTCCATTACCTGCAGCTGGTGGC  
 AAGCGTGGAGCAGGAGCAGCAGAAGTTCGCTCCAGGCAGCCGTCATCGATGAGATTGTGGACACCACA  
 TTTGAGGCTGGAGAAGGACTTCAGGAAT

**ACGCGT**ACGCGGCCGCTCGAG - GFP Tag - GTTTAA

**Protein Sequence:** >RG206133 representing NM\_053054  
 Red=Cloning site Green=Tags(s)

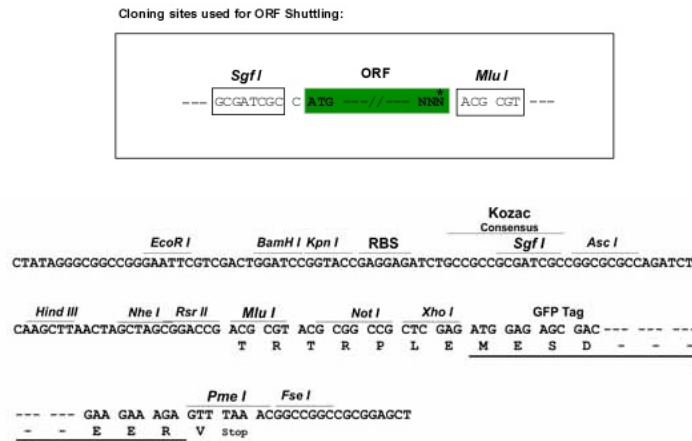
```

MDQNSVPEKAQNEADTNNADRFRRSHSSPPHHRPGHSRALHHYELHHHGVPHQRGESHHPPEFQDFHDQA
LSSHVHQSHHHSEARNHVRAHGPTGFLAPSQGAVPSHRSYGEDYHDELQRDGRRHHDGSSQYSGFHQQSD
SHYHRGSHHGRPQYLGENLSHYSSGVPHHGEASHHGGSYLPHGPNPYSEFFHHSEASHLSGLQHDSEQHH
QVPHRGWPHHHQVHHHGRSRHHEAHQHGKSPHHGETISPHSSVGSYQRGISDYHSEYHQGDHHPSEYHHG
DHPHHTQHYYHQTHRHRDYHQHDHGHAYHSSYHLHG DYVQSTSQLSIPHTSRSLIHDAPGPAASRTGVFP
YHVAHPRGSAHSMTRSSSTIRSRVTQMSKKVHTQDISTKHSEDWGKEEGQFQKRKTGRLQRTRKKGHSTN
LFQWLWEKLTFLIQGFREMIRNLTQSLAFETFFVCLNTVMLVAQTFAEVEIRGEWYFALDSIFFCI
YVVEALLKIIALGLSYFFDFWNNLDFIMAMAVLDFLLMQTHSFAIYHQSLFRILKVKSLRALRAIRVL
RRLSFLTSVQEVGTGLGQSLPSIAAILILMFTCLFLFSAVLRALFRKSDPKRFQNIFFTTIFLFTLLTLD
DWSLIYMSRAQGAWIIPILIIYIIQYFIFLNLVITVLVDSFQTALFKGLEKAKQERAARIQEKLLLED
SLTELRAAEPKEVASEGTMKRLIEKKFGTMTEKQOELLFHYLQLVASVEQEQQKFRSQAVIDEIVDTT
FEAGEEDFRN
  
```

TRTRPLE - GFP Tag - V

**Restriction Sites:** SgfI-MluI

**Cloning Scheme:**



**ACCN:** NM\_053054

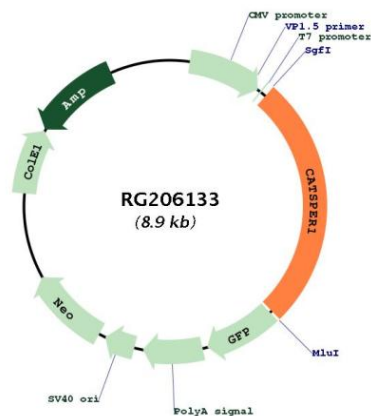
**ORF Size:** 2340 bp

**OTI Disclaimer:** The molecular sequence of this clone aligns with the gene accession number as a point of reference only. However, individual transcript sequences of the same gene can differ through naturally occurring variations (e.g. polymorphisms), each with its own valid existence. This clone is substantially in agreement with the reference, but a complete review of all prevailing variants is recommended prior to use. [More info](#)

**OTI Annotation:** This clone was engineered to express the complete ORF with an expression tag. Expression varies depending on the nature of the gene.

<b>Components:</b>	The ORF clone is ion-exchange column purified and shipped in a 2D barcoded Matrix tube containing 10ug of transfection-ready, dried plasmid DNA (reconstitute with 100 ul of water).
<b>Reconstitution Method:</b>	<ol style="list-style-type: none"> <li>1. Centrifuge at 5,000xg for 5min.</li> <li>2. Carefully open the tube and add 100ul of sterile water to dissolve the DNA.</li> <li>3. Close the tube and incubate for 10 minutes at room temperature.</li> <li>4. Briefly vortex the tube and then do a quick spin (less than 5000xg) to concentrate the liquid at the bottom.</li> <li>5. Store the suspended plasmid at -20°C. The DNA is stable for at least one year from date of shipping when stored at -20°C.</li> </ol>
<b>RefSeq:</b>	<u><a href="#">NM_053054.2</a></u> , <u><a href="#">NP_444282.2</a></u>
<b>RefSeq Size:</b>	2630 bp
<b>RefSeq ORF:</b>	2343 bp
<b>Locus ID:</b>	117144
<b>UniProt ID:</b>	<u><a href="#">Q8NEC5</a></u>
<b>Cytogenetics:</b>	11q13.1
<b>Protein Families:</b>	Druggable Genome, Ion Channels: Other, Transmembrane
<b>Gene Summary:</b>	Calcium ions play a primary role in the regulation of sperm motility. This gene belongs to a family of putative cation channels that are specific to spermatozoa and localize to the flagellum. The protein family features a single repeat with six membrane-spanning segments and a predicted calcium-selective pore region. [provided by RefSeq, Jul 2008]

### Product images:



Circular map for RG206133