

Product datasheet for **RG206126**

ELMOD1 (NM_018712) Human Tagged ORF Clone

Product data:

Product Type:	Expression Plasmids
Product Name:	ELMOD1 (NM_018712) Human Tagged ORF Clone
Tag:	TurboGFP
Symbol:	ELMOD1
Mammalian Cell Selection:	Neomycin
Vector:	pCMV6-AC-GFP (PS100010)
E. coli Selection:	Ampicillin (100 ug/mL)
ORF Nucleotide Sequence:	>RG206126 representing NM_018712 Red=Cloning site Blue=ORF Green=Tags(s)

TTTTGTAATACGACTCACTATAGGGCGGCCGGAATTCGTCGACTGGATCCGGTACCGAGGAGATCTGCC
GCC**CGATCGCC**

ATGAAGCACTTCCTGAGAATGTTGATCCAGGTATGCCTGTATTTTTACTGTAAATTTCTGTGGCGCTGCC
TGAAATTTGTAATGAGGAAGCTAACTGGAAGATGTGAACACAACGGATCTGTTATAATACCAAGCCGGG
AGCTTCTAGAACCATGAAATCGAAACATCACTGAGGGATTCTAAAAGTAAGCTGTTGCAGACTTCTGTG
AGTGTTCACCCCGACGCTATTGAAAAAAGTATAGAAGATATCATGGAACGAAAAAATTAATCCTGACG
TAAATCCACAGCTGGGAATCTCTTTCAGGCTTGCCTTTCGAAATCGTTGGGTACAGGAACCTTATTGC
AGATGTGAAAAAAGTGCCTAGAGAGGCCTATGATTCTGATAATCCCAACATGAAGAAATGCTTTTGAAG
TTATGGAATTTCTGAAGCCAATACTCCACTGGAATCTCGGATTTCTAAGCAGTGGTGTGAAATGGTT
TCCAAGGTGATGATCCTAAAACAGACTTTCGAGGAATGGGACTTCTGGGACTGTACAATTTGCAGTATTT
CGCGGAAAGGGATGCCACAGCAGCTCAGCAGGTCTGTCTGACTCTTTCATCCGAAATGCAGGGATATC
ACTAAAGAAGAAATAAGCAAATTCAGCAAAGCAGAATGGGAGAAGAAAAGGATGGATAAGGCAATTTGGGT
ACTCATTTGCAATTGTGGGCATCAATAAAGTACCTGGCATATAATCTACTGGTCAGCGGAGCTCTAAA
AACCCATTTCTACAATATCGCCCCAGAAGCTCCAACATTGTCTCACTTTCAGCAAACATTCTGCTATTTG
ATGCATGAATTTTATAAGTTTTGGATCGAAGAGGACCCCATGGACATAATGGAATTTAATCGTGTGAGGG
AGAAATTCGCAAGAGGATCATCAACAGCTGCAGAACCAGACATGGCGCTGTGCCACATTTTGTGCTG
CTCGGAAGTTTAAATCAACATG

ACGCGTACGCGGCCGCTCGAG - GFP Tag - GTTTAA



[View online »](#)

Protein Sequence: >RG206126 representing NM_018712
 Red=Cloning site Green=Tags(s)

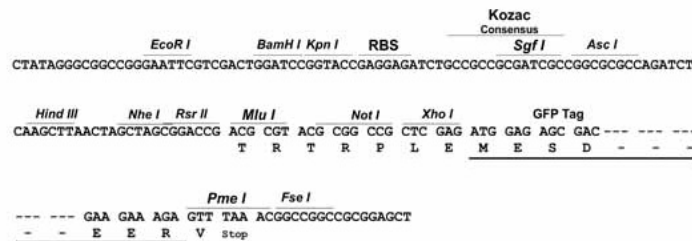
MKHFLRMLIQVCLYFYCKFLWRCLKFVMRKLTGRCELQRICYNTKPGASRTMKIETSLRDSKSKLLQTSV
 SVHPDAIEKTIEDIMELKKNPDVNPQLGISLQACLLQIVGYRNLIADVEKLRREAYSDNPQHEEMLLK
 LWKFLKPNTPLESRIKQWCEIGFQGGDDPKTDFRGMGLLGLYNLQYFAERDATAAQVLSDSLHPKCRDI
 TKEEISKFSKAWEKRMKDAIGYSFAIVGINITDLAYNLLVSGALKTHFYNIAPPEAPTLSHFQQTFCYL
 MHEFHKFWIEEDPMDIMEFNVRVREKFRKRIIKQLQNPDMALCPHFAASEGLINM

TRTRPLE - GFP Tag - V

Restriction Sites: SgfI-MluI

Cloning Scheme:

Cloning sites used for ORF Shutting:



ACCN: NM_018712

ORF Size: 1002 bp

OTI Disclaimer: The molecular sequence of this clone aligns with the gene accession number as a point of reference only. However, individual transcript sequences of the same gene can differ through naturally occurring variations (e.g. polymorphisms), each with its own valid existence. This clone is substantially in agreement with the reference, but a complete review of all prevailing variants is recommended prior to use. [More info](#)

OTI Annotation: This clone was engineered to express the complete ORF with an expression tag. Expression varies depending on the nature of the gene.

Components: The ORF clone is ion-exchange column purified and shipped in a 2D barcoded Matrix tube containing 10ug of transfection-ready, dried plasmid DNA (reconstitute with 100 ul of water).

Reconstitution Method:

1. Centrifuge at 5,000xg for 5min.
2. Carefully open the tube and add 100ul of sterile water to dissolve the DNA.
3. Close the tube and incubate for 10 minutes at room temperature.
4. Briefly vortex the tube and then do a quick spin (less than 5000xg) to concentrate the liquid at the bottom.
5. Store the suspended plasmid at -20°C. The DNA is stable for at least one year from date of shipping when stored at -20°C.

RefSeq: [NM_018712.4](#)

RefSeq Size: 2741 bp

RefSeq ORF: 1005 bp

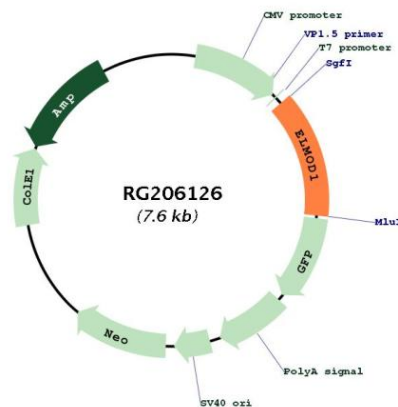
Locus ID: 55531

UniProt ID: [Q8N336](#)

Cytogenetics: 11q22.3

Gene Summary: Acts as a GTPase-activating protein (GAP) toward guanine nucleotide exchange factors like ARL2, ARL3, ARF1 and ARF6, but not for GTPases outside the Arf family.[UniProtKB/Swiss-Prot Function]

Product images:



Circular map for RG206126