

Product datasheet for **RG206102**

SLC46A3 (NM_181785) Human Tagged ORF Clone

Product data:

Product Type:	Expression Plasmids
Product Name:	SLC46A3 (NM_181785) Human Tagged ORF Clone
Tag:	TurboGFP
Symbol:	SLC46A3
Synonyms:	FKSG16
Mammalian Cell Selection:	Neomycin
Vector:	pCMV6-AC-GFP (PS100010)
E. coli Selection:	Ampicillin (100 ug/mL)



[View online »](#)

ORF Nucleotide Sequence:

>RG206102 representing NM_181785
 Red=Cloning site Blue=ORF Green=Tags(s)

TTTTGTAATACGACTCACTATAGGGCGGCCGGAATTCGTCGACTGGATCCGGTACCGAGGAGATCTGCC
 GCC**CGCATCGCC**

ATGAAGATTTTATTTGTAGAACCTGCCATTTTCCTTAGTGCATTTGCTATGACTTTGACCGGTCCACTGA
 CAACGCAATATGTTTATCGGAGAATATGGGAAGAACTGGCAACTACACTTTTTTCATCTGATAGCAATAT
 TTCTGAGTGTGAAAAAACAAGCAGCCCAATTTTGCATTCCAGGAGGAAGTTCAGAAAAAGTGCA
 CGTTTTAATCTGCAGATGGACATAAGTGGATTAATTCCTGGTCTAGTGTCTACATTCATACTTTTGTCTA
 TTAGTGATCACTACGGACGAAAATTCCTATGATTTTGTCTTCCGTTGGTCTCTTGCAACCAGCGTTTG
 GCTCTGTTGCTTTGCTATTTTGCCTTCCATTCCAGCTTTTGATTGCATCTACCTTCATTGGTGCATTT
 TGTGGCAATTATACCACATTTTGGGAGCTTGCTTTGCCTATATAGTTGATCAGTTTAAAGAACACAAC
 AAAAAACAATTCGAATAGCTATCATTGACTTTCTACTTGGACTTGTACTGGACTAACAGGACTGTCATC
 TGCTATTTTATTAGAGACTAGGTTTTGAGTGGTCGTTTCTAATTATTGCTGTGTCTCTTGTCTTAAT
 TTGATCTATATTTATTTTCTCGGAGATCCAGTGAAAGAGTGTTCATCTCAGAATGTTACTATGTCAT
 GTAGTGAAGGCTTCAAAAACCTATTTTACCGAACTTACATGCTTTTTAAGAATGCTTCTGGTAAGAGACG
 ATTTTTGCTCTGTTTGTACTTTTTACAGTAATCACTATTTTTTGTGGTAATTGGCATTGCCCAATT
 TTTATCCTTTATGAATTGGATTCACCACTCTGCTGGAATGAAGTTTTTATAGGTTATGGATCAGCTTTGG
 GTAGTGCTCTTTTTGACTAGTTTCTAGGAATATGGCTTTTTTCTTATTGTATGGAAGATATTCATAT
 GGCCTTCATTGGGATTTTACCACGATGACAGGAATGGCTATGACCGCGTTTGCCAGTACAACACTGATG
 ATGTTTTTAGCCAGGGTCCGTTCTTTTCACTATTGTCCATTCTGTCTACGGTCCATGTTGTCAA
 AAGTGGTTCGTTTCGACTGAACAAGTACCCTGTTGCTTGTATTGCTTTCTTAGAAACACTGGAGGAGT
 CACTGCAGTTTCTACTTTTAAATGGAATTTACTCAGCCACTGTTGCTTGGTACCCTGGCTTCACTTTCTG
 CTGCTGCTGGTCTGTTACTACTTCCAGCCATCAGTCTATGTGTTGTCAAGTGTACCAGCTGGAATGAGG
 GAAGCTATGAAGTCTTATACAAGAAGAATCCAGTGAAGATGCTTCCAGACAGG

ACGCGTACGCGGCCGCTCGAG – GFP Tag – GTTTAA

Protein Sequence:

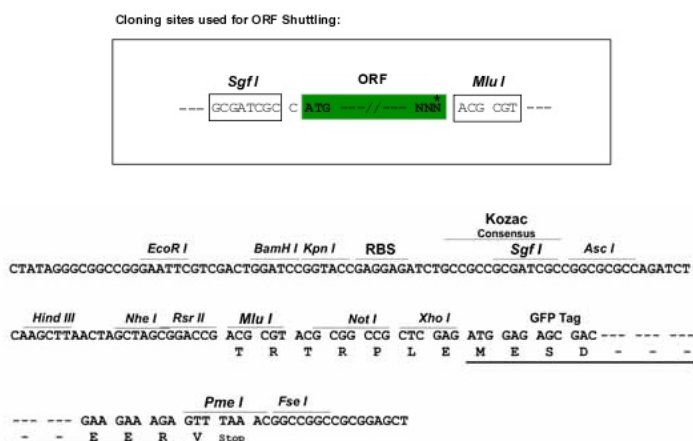
>RG206102 representing NM_181785
 Red=Cloning site Green=Tags(s)

MKILFVEPAIFLSAFAMLTGPLTTQYVYRRIWEETGNYTFSSDSNISECEKNKSSPIFAFQEEVQKKVS
 RFNLQMDISGLIPGLVSTFILLSISDHYGRKFPMLSSVGLATSVWLCLLCYFAFPFQLLIASFTIGAF
 CGNYTTFWGFACFAYIVDQFKEHKQKTIRIAIIDFLLGLVTGLTGLSSGYFIRELGFWSFLIIAVSLAVN
 LIYILFFLGDVPVKECSSQNVTMSCSEGFKNLFYRTYMLFKNASGKRRFLLCLLFTVITYFFVVIIGIPI
 FLYELDSPLCWNEVFIGYGSALGSASFLTSFLGIWLF SYCMEDIHMAFIGIFTMTGMAMTAFASSTLM
 MFLARVPFLFTIVPFSVLRSMKVVVRSTEQGTLFACIAFLETGGVTAVSTFNGIYSATVAWYPGFLL
 LSAGLLLLPAISLCVVKCTSWNEGSYELLIQEESSEDASDR

TRTRPLE – GFP Tag – V

Restriction Sites:

Sgfl-MluI

Cloning Scheme:


ACCN: NM_181785

ORF Size: 1383 bp

OTI Disclaimer: The molecular sequence of this clone aligns with the gene accession number as a point of reference only. However, individual transcript sequences of the same gene can differ through naturally occurring variations (e.g. polymorphisms), each with its own valid existence. This clone is substantially in agreement with the reference, but a complete review of all prevailing variants is recommended prior to use. [More info](#)

OTI Annotation: This clone was engineered to express the complete ORF with an expression tag. Expression varies depending on the nature of the gene.

Components: The ORF clone is ion-exchange column purified and shipped in a 2D barcoded Matrix tube containing 10ug of transfection-ready, dried plasmid DNA (reconstitute with 100 ul of water).

Reconstitution Method:

1. Centrifuge at 5,000xg for 5min.
2. Carefully open the tube and add 100ul of sterile water to dissolve the DNA.
3. Close the tube and incubate for 10 minutes at room temperature.
4. Briefly vortex the tube and then do a quick spin (less than 5000xg) to concentrate the liquid at the bottom.
5. Store the suspended plasmid at -20°C. The DNA is stable for at least one year from date of shipping when stored at -20°C.

RefSeq: [NM_181785.1](#), [NP_861450.1](#)

RefSeq Size: 3176 bp

RefSeq ORF: 1386 bp

Locus ID: 283537

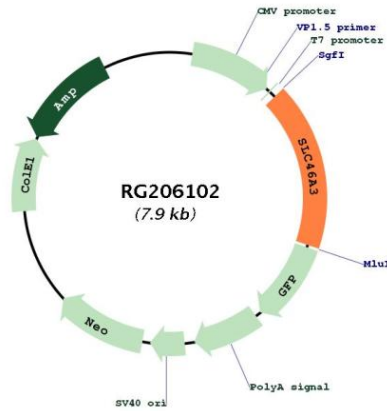
UniProt ID: [Q7Z3Q1](#)

Cytogenetics: 13q12.3

Protein Families: Transmembrane

Gene Summary: The protein encoded by this gene is a member of a transmembrane protein family that transports small molecules across membranes. The encoded protein has been found in lysosomal membranes, where it can transport catabolites from the lysosomes to the cytoplasm. This protein has been shown to be an effective transporter of the cytotoxic drug maytansine, which is used in antibody-based targeting of cancer cells. [provided by RefSeq, Dec 2016]

Product images:



Circular map for RG206102