

Product datasheet for **RG206094**

NINL (NM_025176) Human Tagged ORF Clone

Product data:

Product Type:	Expression Plasmids
Product Name:	NINL (NM_025176) Human Tagged ORF Clone
Tag:	TurboGFP
Symbol:	NINL
Synonyms:	NLP
Mammalian Cell Selection:	Neomycin
Vector:	pCMV6-AC-GFP (PS100010)
E. coli Selection:	Ampicillin (100 ug/mL)
ORF Nucleotide Sequence:	>RG206094 representing NM_025176 Red=Cloning site Blue=ORF Green=Tags(s)

TTTTGTAATACGACTCACTATAGGGCGGCCGGAATTCGTCGACTGGATCCGGTACCGAGGAGATCTGCC
GCC**CGATCGCC**

ATGGATGAAGAAGAGAACCACTATGTCTCGCAGCTCAGGGAAGTCTACAGCAGCTGCGACACCACGGGA
CTGGCTTTCTGGACCGCCAGGAGCTGACCCAGCTCTGCCTTAAGCTTACCTGGAGCAGCAGCTGCCGT
CCTCTGCAGACGCTTCTCGAAACGACATTTGCCAGGGTAACTTTGAGGAATTTAAGGAAGTTTT
GTGGCTGTGTCTTCAAATGCTGGTGTTCGCCCTCAGATGAAGACAGTAGTCTTTGGAATCAGCTG
CCTCCAGTGCCATCCCTCAAAGTATGTGAATGGTTCTAAGTGGTATGGCCGTCGGAGCCGCTGAGCT
ATGTGACGCTGCCACAGAAGCCAGACGCGTGCCGAGCAGCAAACCCAGGCCAGCCTGAAAAGTACCTC
TGGCGCTCAGCGTCTCTGGAGAGCGTGGAGAGTCCAAGTCAGATGAAGAGGCCGAGAGCACTAAAGAAG
CTCAGAATGAATTATTTGAAGCACAAGGACAGCTGCAGACCTGGGATTCTGAGGACTTTGGGAGCCCCA
GAAGTCTGCAGCCCCTCCTTTGACACCCAGAGAGCCAGATCCGGGGCGTGTGGGAGGAGCTGGGGTG
GGCAGCAGCGGACACCTGAGCGAGCAGGAGCTGGCTGTGGTCTGCCAGAGCGTCGGGCTCCAGGGACTCG
AGAAAGAGGAACCTGAAGACCTGTTTAACAAATGGATCAAGACGGAGACGGCAAAGTGAAGTCTTGAGGA
ATTCAGCTTGGCTCTCAGTCATGAGCCCGCTACTTCTAGAGTCTTCCACTCGGGTAAACCGAGC
AAGCTTGGTCTCATTACCAGTCCCAGAGGAGCGGCTGCCACACCACCAACCTCATCCCTCGTGT
CCCTGTGCTCCAGCCTGCGCTCTTCTCCAGCATTGACGATGGTTCTGGCTTCGCTTTCCCTGATCAGGT
CCTGGCCATGTGGACCCAGGAGGGGATTAGAATGGCAGGGAGATCTTGCAGAGCCTGGACTTCAGCGTG
GACGAGAAGGTGAACCTTCTGGAGCTGACCTGGGCCCTTGACAACGAGCTCATGACAGTGGACAGTGCCG
TCCAGCAGGCAGCCCTGGCTGTACCACCAGGAGCTGAGCTACCAGCAAGGGCAGGTGGAGCAGCTGGC
AAGGGAGCGTGACAAGGCAAGGCAGGACCTGGAGAGGGCCGAGAAGAGGAACCTGGAGTTTGTGAAAGAG
ATGGACGACTGCCACTCCACCTGGAGCAGCTCACGGAGAAGAAAATCAAGCATCTGGAGCAGGGGTACC
GGGAAAGGCTGAGCCTCCTGCGGTCTGAGGTGGAGGCGGAGCGAGAGCTGTTCTGGGAGCAGGCCACAG
GCAGAGGGCCGCTGGAGTGGGACGTGGGGCGCTGCAGGCTGAGGAGGCTGGCTCCGGAGAAGCTG



[View online >](#)

ACCCTGGCCCTGAAGGAAAACAGTCGCCTACAGAAGGAGATTGTGGAAGTGGTGGAAAAGCTTTCGGATT
CGGAGAGGCTGGCCCTGAAGCTGCAAGAAGGACCTGGAGTTTGTGCTGAAGGACAAGCTGGAGCCACAGAG
TGCAGAGCTCCTGGCCCAGGAGGAGCGTTTCGACAGCTCCTGAAGGAATACGAGCTCAAGTGCCGGGAC
CTGCAGGACCCGAACGATGAGCTGCAAGCTGAGCTGGAAGGCCTGTGGGCGCGGCTGCCAAGAACCAGGC
ACAGCCCTCATGGAGCCCGATGGGCGCAGACGGCAGCTCCCTGGACTCGGCCACGAGGCATTTTCATT
CCTGGGTAAATCTGCTCCAGTGAATATAGAAACGGAGCTGATGATGGAGCAGGTAAGGAGCATTACCAA
GACCTCAGGACCCAGCTGGAGACCAAGGTAATTAACACGAAAGGAAATTGCGGCACTGAAAAGGAACT
TTGAGAAGGAGAGGAAGGACATGGAGCAGGCTCGCCGGCCGAGGTCAGCGTGTGGAGGTCAGAAGGC
CGACCTGGAGGAGCTCCACGAGAAGTCTCAGGAGGTCATCTGGGCTGCAGGAGCAGCTGCAGGACACA
GCCCGCGGCCCGAGCCTGAGCAGATGGGCTGGCACCCTGCTGCACCCAGGCACTGTGTGGCTGGCCC
TGCGGCATCACAGCCACCTGCAGCAGATCAGGAGAGAGGCTGAGGCGGAGCTGAGTGGAGAGCTGTGGG
GCTGGGAGCCCTGCCGCTGCAGAGACCTGACCTTGGAGCTGGAGGAGCCGCCGAGGGACCCCTGCCA
CGCGGGAGCCAGAGTTCGGAGCAGCTGGAGCTGGAGAGGGCACTGAAGCTGCAGCCCTGTGCGAGCGAGA
AGCGCGCCAGATGTGCGTATCGTTGGCCCTCGAGGAGGAGGAGTTGGAGCTTCCCGCGGGAAGCGAGT
GGACGGGCCCTCCCTGGAAGCAGAGATGCAGGCCCTGCCGAAAGATGGGCTGGTGGCAGGAAGTGGCCAG
GAGGGCACAGTGGCCTCCTACCACTGCGTCCGGGCTGTGGGAGCGGCCACTGGCTGGCTGGCCCCAG
GTGATGGCAGAGAGTCTGAGGAGCGGCAGGAGCCGGGCTCGCCGCAAGCCAGGACACAGAAGC
TACGCAGAGCCCGGCCCGCCCTGCCCGGCATCCCACGGCCCTCAGAGAGGTGGTACGCATGCGAG
CCCTGTGGAGTGGATGGGGATATTGTCCAAAGGAGCCAGAGCCTTTCGGCGGAGCGCAGCGGGGCTGG
AGCAGCCTGGAGCCCGGAGCTGCCTCTGCTGGGAACAGAGAGACGCCTCGCAAACCCAGCCACGGAT
GCCACCCCTGAGGCCGGCCGCTTCGTGCGGGGACAGGCTGAGAGGCTACAGGCCATTAGGAAGAGCGA
GCACGAAGCTGGAGCAGGGGCACCCAGGAGCAGGCTCGGAGCAGCAGGCCCGGGCCGAGGGCGCCCTGG
AGCTGGGTGTCAACAAGCACAGCTGGAGTTGCCAGGAGAGGTTCCCTTGCATCCACCTCCAGCTCGC
AGACCCGCAAGGTTCTGGCAGGAGCAGCTTGTGCCCAAGAGAGGGGAGACCAAAAATAGCGCTGGAG
AGAGAGAAGGATGACATGGAACCAAACTTCTACATCTGGAAGACGTCGTCGGGCTCTGGAGAAACATG
TAGATTTGAGAGAGAACGACAGACTGGAGTTCCATAGACTTTCTGAAGAAAACACTTTGTTGAAAAACGA
TCTGGGAAGGTTTCGGCAAGAGCTTGAAGCTGCAGAAAGTACTCACGATGCACAGAGGAAGGAAATTGAG
GTTTTAAAGAAAGACAAGGAAAAGGCTGCTCTGAGATGGAGGTGCTCAACAGACAGAATCAGAATACA
AGGATCAATTATCCAGCTCAATGTCAGGGTCTTCAACTGGGACAGGAGGCTTCTACCCACCAGGCCCA
AAACGAGGAGCATCGTGTGACCATTCAGATGTTAACACAGAGCCTGGAGGAGGTGGTTCGAGTGGGCAG
CAGCAGAGTGACCAAATCCAAAACTTAGAGTTGAACTTGAATGCCTGAATCAGGAACATCAGAGCCTGC
AGCTGCCATGGTCAGAGCTGACCCAGACCTTGAGGAAAGTCAAGACCAGGTGCAGGGAGCTCACCTGAG
GCTGAGGCAGGCCAGGCCAGCACTTGCAGGAGTCCGGCTGGTGCACCAGGACCGTGTGGCCGAGCTG
CATCGCCTGCTCAGCCTTCAAGGAGAGCAGGCCAGGAGGCGCCTGGATGCACAGCGGGAAGAATGAGA
AACAGCTGAAAGCCACAGAAGAGCGGGTGAAGAGGCGGAGATGATTCTGAAGAAATATGGAATGCTCCT
CCAAGAGAAAGTGGATAAGCTGAAGGAGCAGTTTAAAAGAACACGAAGTCCGACCTGCTGCTGAAGGAG
CTGTACGTGGAGAACGCCACCTGGTGAAGCAGCTTACAGCCACCGAGGAGAAGCAGCGAGGCGCCGAGA
AACAAAGCCGCTCTTGAAGAAAAAGTTCACGCTCTCAACAACTCGTCAGTAGGATTGCCCCCGCAGC
CCTCTCTGTG

AGCGGACCCACGCGTACGCGGCCGCTCGAG - GFP Tag - GTTTAA

Protein Sequence: >RG206094 representing NM_025176
 Red=Cloning site Green=Tags(s)

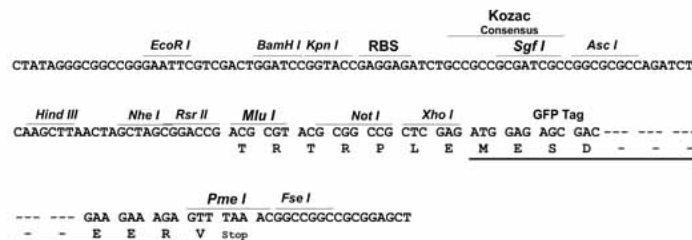
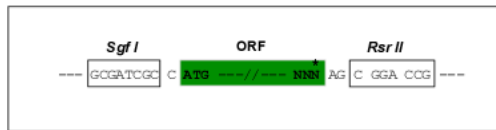
MDEEENHYVSQLREYVSSCDTTGTGFLDRQELTQLCLKLHLEQQLPVLLQTLLGNDHFARVNFEEFKEGF
 VAVLSSNAGVRPSDEDSSSLESAASSAIPPKYVNGSKWYGRSRPEL CDAATEARRVPEQQTQASLKSHL
 WRSASLESVSPKSDEEAESTKEAQNELFEAQGLQTDWSEDFGSPQKSCSPSFDTPESQIRGVWEELGV
 GSSGHLSEQELAVVCQSVGLQGLEKEELEDL FNKLDQDGDGKVSLEEFQLGLFSHEPALLLESSTRVKPS
 KAWSHYQVPEESGCHTTTTSSLVSLCSSLRLFSSIDDGSGFAFPDQVLA MWQTQEGIQNGREILQSLDFSV
 DEKVNLLLELTWALDNELMTVDSAVQQAALACYHQELSYQQGQVEQLARERDKARQDLERAERKNLEFVKE
 MDDCHSTLEQLTEKKIKHLEQGYRERLSLLRSEVEAERELFWEQAHRQRAALEWDVGRQLQAEAGLREKL
 TLALKENSRLQKEIVEVVEKLSDSERLALKLQKDFVFLKDKLEPQSAELLAQEERFAAVLKEYELKCRD
 LQDRNDELQAELEGLWARLPKNRHSPSWSPDGRRRQLPGLGPAGISFLGNSAPVSIETELMMEQVKEHYQ
 DLRTQLETKVNYIERIAALKRNFEKERKDMEQARRREVSVLEGGQKADLEELHEKSQEVIWGLQEQLQDT
 ARGPEPEQMGLAPCCTQALCGLALRHHSHLQQIRREAEAE LSGELSGLGALPARRDLTLELEPPQGPLP
 RGSQRSEQLELERALKLQPCASEKRAQMCVSLALEEELELARGKRVDPGSLAEQMALPKDGLVAGSSQ
 ETRGLPLRPGGGERPLAWLAPGDGRESEEAGAGPRRRQAQDTEATQSPAPAPAPASHGSPSERWSRMQ
 PCGVDGDIVPKEPEPFGASAAGLEQPGARELPLLGTERDASQTQPRMPPLRPAASCQGQAERLQAIQEER
 ARSWSRGTQEQASEQARAEAGALEPGCHKHSVEVARRGSLPSHLQLADPQGSWQEQLAAPEEGETKIALE
 REKDDMETKLLHLEDVVRALEKHVDLRENRLEFHRLSEENTLLKNDLGRVVRQELEAAESTHDAQRKEIE
 VLKDKDEKACSEMEVLNRQNQNYKDQLSQLNVRVLQLGQEAETHQAQNEEHRVTIQMLTQSLSEEVVRSQ
 QQSDQIQKLRVELECLNQEHSLSLQLPWSELQTLEESQDQVQGAHLRLRQAQAHLQEVRLVPQDRVAEL
 HRLLSLQGEQARRRLDAQREEHEKQLKATEERVEEAEMILKNMEMLLQEKVDKLEQFEKNTKSDLLLKE
 LYVENAHLVRALQATEEKQRGAEKQSRLLLEEKVHALNKLVSRIAPAALSV

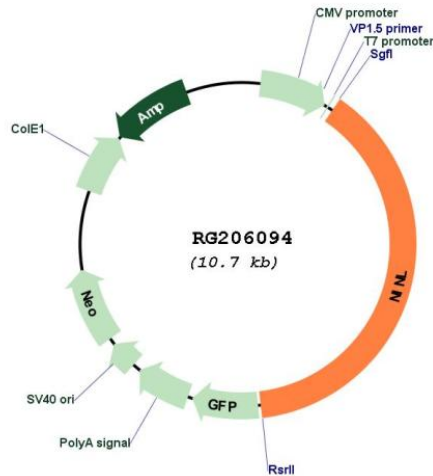
SGPTRRRLE - GFP Tag - V

Restriction Sites: SgfI-RsrII

Cloning Scheme:

Cloning sites used for ORF Shutting:



Plasmid Map:


ACCN: NM_025176

ORF Size: 4146 bp

OTI Disclaimer: The molecular sequence of this clone aligns with the gene accession number as a point of reference only. However, individual transcript sequences of the same gene can differ through naturally occurring variations (e.g. polymorphisms), each with its own valid existence. This clone is substantially in agreement with the reference, but a complete review of all prevailing variants is recommended prior to use. [More info](#)

OTI Annotation: This clone was engineered to express the complete ORF with an expression tag. Expression varies depending on the nature of the gene.

Components: The ORF clone is ion-exchange column purified and shipped in a 2D barcoded Matrix tube containing 10ug of transfection-ready, dried plasmid DNA (reconstitute with 100 ul of water).

Reconstitution Method:

1. Centrifuge at 5,000xg for 5min.
2. Carefully open the tube and add 100ul of sterile water to dissolve the DNA.
3. Close the tube and incubate for 10 minutes at room temperature.
4. Briefly vortex the tube and then do a quick spin (less than 5000xg) to concentrate the liquid at the bottom.
5. Store the suspended plasmid at -20°C. The DNA is stable for at least one year from date of shipping when stored at -20°C.

RefSeq: [NM_025176.3](#)

RefSeq Size: 4979 bp

RefSeq ORF: 4149 bp

Locus ID: 22981

UniProt ID: [Q9Y2I6](#)

Cytogenetics: 20p11.21

Gene Summary: Involved in the microtubule organization in interphase cells. Overexpression induces the fragmentation of the Golgi, and causes lysosomes to disperse toward the cell periphery; it also interferes with mitotic spindle assembly. May play a role in ovarian carcinogenesis.
[UniProtKB/Swiss-Prot Function]