

Product datasheet for **RG206089**

FBXL5 (NM_033535) Human Tagged ORF Clone

Product data:

Product Type:	Expression Plasmids
Product Name:	FBXL5 (NM_033535) Human Tagged ORF Clone
Tag:	TurboGFP
Symbol:	FBXL5
Synonyms:	F-box and leucine-rich repeat protein 5; F-box protein FBL5; FBL4; FBL5; FLR1
Mammalian Cell Selection:	Neomycin
Vector:	pCMV6-AC-GFP (PS100010)
E. coli Selection:	Ampicillin (100 ug/mL)



[View online »](#)

ORF Nucleotide Sequence:

>RG206089 representing NM_033535
 Red=Cloning site Blue=ORF Green=Tags(s)

TTTTGTAATACGACTCACTATAGGGCGGCCGGAATTCGTCGACTGGATCCGGTACCGAGGAGATCTGCC
 GCC**CGGATCGCC**

ATGGCGCCCTTTCTGAAGAAGTGGACGTCTTCACCGCCCCACACTGGCGGATGAAGCAGCTGGTGGGGC
 TCTACTGCGACAAGCTTTCTAAAACCAATTTTTCCAACAACAACGATTTCCGTGCTCTTCTGCAGCTTT
 GTATGCTACTTTACGGAGTTCAAATGCATGAGCAGATTGAAAATGAATACATTATTGGTTTGCTTCAA
 CAACGCAGCCAGACCATTATAATGTACATTCTGACAATAAACTCTCGAGATGCTTAGCCTCTTTGAAA
 AGGGACTGAAGAATGTTAAGAATGAATGAACAGTTAAATTAAGCAAAACAAGTAAAGAGAGATTGGA
 GGCTTTTACAAGAGATTTTCTCCTCACATGAAAGAGGAAGAGGAGGTTTTTTCAGCCCATGTTAATGGAA
 TATTTTACCTATGAAGAGCTTAAGGATATTAAGAAAGAAAGTATTGCACAACACTGCTCTCAGAAGGATA
 CTGCAGAACTCCTTAGAGGTCTTAGCCTATGGAATCATGCTGAAGAGCGACAGAAGTTTTTAAATATTC
 CGTGGATGAAAAGTCAGATAAAGAAGCAGAAGTGCAGAACACTCCACAGGTATAACCCATCTTCTCCT
 GAGGTAATGCTGTCAATTTTTCAGCTATCTTAATCCTCAAGAGTTATGTCGATGCAGTCAAGTAAAGCATGA
 AATGGTCTCAGCTGACAAAAACGAGATCGCTTTGGAAACATCTTTACCCTGTTTCATTGGGCCAGAGGTGA
 CTGGTATAGTGGTCCCGCAACTGAACCTTGATACTGAACCTGATGATGAATGGGTGAAAAATAGGAAAGAT
 GAAAGTCGTGCTTTTCATGAGTGGGATGAAGATGCTGACATTGATGAATCTGAAGAGTCTGCGGAGGAAT
 CAATTGCTATCAGATTGCACAAATGAAAAACGTTTACTCCATGGCTTAATTCATAACGTTCTACCATA
 TGTTGGTACTTCTGTA AAAACCTTAGTATTAGCATACAGCTCTGCAGTTTCCAGCAAAATGGTTAGGCAG
 ATTTTAGAGCTTTGTCTAACCTGGAGCATCTGGATCTTACCCAGACTGACATTTTCAGATTCTGCATTTG
 ACAGTTGGTCTTGGCTTGGTTGCTGCCAGAGTCTCGGCATCTTGATCTGTCTGGTTGTGAGAAAAATCAC
 AGATGTGGCCCTAGAGAAGATTTCCAGAGCTCTTGAATTCTGACATCTCATCAAAGTGGCTTTTTGAAA
 ACATCTACAAGCAAAATTACTTCAACTGCGTGGAAAAATAAAGACATTACCATGCAGTCCACCAAGCAGT
 ATGCCTGTTTGCACGATTTAACTAAACAAGGGCATTGGAGAAGAAATAGATAATGAACACCCTGGACTAA
 GCCTGTTTCTTCTGAGAATTTCACTTCTCCTTATGTGTGGATGTTAGATGCTGAAGATTTGGCTGATATT
 GAAGATACTGTGGAATGGAGACATAGAAATGTTGAAAGTCTTTGTGTAATGGAACAGCATCCAACTTTA
 GTTGTCCACCTCTGGTTGTTTTAGTAAGGACATTGTTGGACTAAGGACTAGTGTCTGTTGGCAGCAGCA
 TTGTGCTTCTCCAGCCTTTGCGTATTGTGGTCACTCATTTTGTGTACAGGAACAGCTTTAAGAATATG
 TCATCACTCCAGAACTTCTGCAATGTGTAGAAAAGCAGCAAGGACTAGATTGCCTAGGGGAAAAGACT
 TAATTTACTTTGGGAGTAAAAATCTGATCAAGAGACTGGACGTGACTTCTGTTTCTCAGTTTATCTGG
 ATGTTATCAGATCACAGACCATGGTCTCAGGGTTTTGACTCTGGGAGGAGGGCTGCCTTATTTGGAGCAC
 CTTAATCTCTCTGTTGTCTTACTATAACTGGTGCAGGCCTGCAGGATTTGGTTTCAGCATGTCCTTCTC
 TGAATGATGAATACTTTTACTACTGTGACAACATTAACGGTCTCATGCTGATACCGCCAGTGGATGCCA
 GAATTTGCAGTGTGTTTTTCGAGCCTGCTGCCGCTCTGGCGAA

ACGCGTACGCGGCCGCTCGAG - GFP Tag - GTTTAA

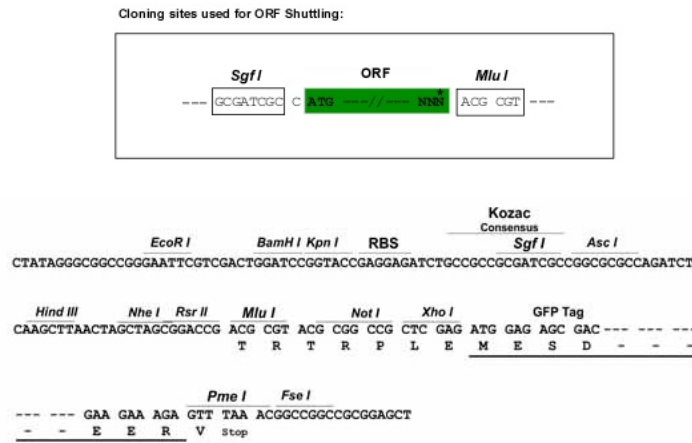
Protein Sequence: >RG206089 representing NM_033535
 Red=Cloning site Green=Tags(s)

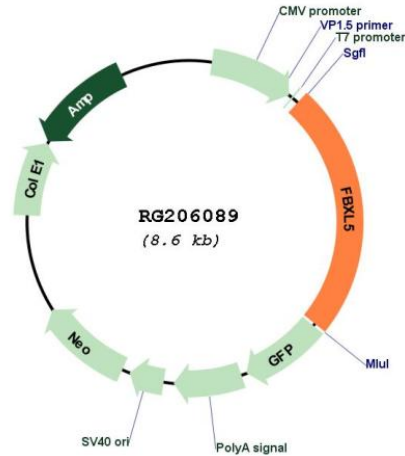
MAPFPPEEVDVFTAPHWRMKQLVGLYCDKLSKTNFSNNNDFRALLQSLYATFTEFKMHEQIENEYIIGLLQ
 QRSQTIYNVHSDNKLSEMLSLFEKGLKNVKNYEQLNYAKQLKERLEAFTRDFLPHMKEEEEVFQPLME
 YFTYEELKDIKKKVIAQHCSQKDTAELLRGLSLWNHAEERQKFFKYSVDEKSDKEAEVSEHSTGITHLPP
 EVMLSIFSYLNPQELCRCSQVSMKWSQLTKTRSLWKHLYPVHWARGDWYSGPATELDTPEPDEWVKNRKD
 ESRAFHEWDEDADIDEEESAEEISIAISIAQMEKRLHGLIHNVLPPYVGTSVKTLVLAYSSAVSSKMVRQ
 ILELCPNLEHLDLTQTDISDSAFDSWSWLGCCQSLRHLDLSGCEKITDVALEKISRALGILTSHQSGFLK
 TSTSKITSTAWKNKDITMQSTKQYACLHDLTNKIGIEEIDNEHPWTKPVSSENFTSPYVWMLDAEDLADI
 EDTVEWRHRNVECLVMETASNFSCSTSGCFSKDIVGLRTSVCWQQHCASPAFAYCGHSFCCTGTALRTM
 SSLPESSAMCRKAARTRLPGRKDLIYFGSEKSDQETGRVLLFLSLSGCYQITDHGLRVLTGGGLPYLEH
 LNLSGCLTITGAGLQDLVSACPSLNDEYFYCDNINGPHADTASGCQNLQCGFRACCRSGE

TRTRPLE - GFP Tag - V

Restriction Sites: SgfI-MluI

Cloning Scheme:



Plasmid Map:


ACCN: NM_033535

ORF Size: 1695 bp

OTI Disclaimer: The molecular sequence of this clone aligns with the gene accession number as a point of reference only. However, individual transcript sequences of the same gene can differ through naturally occurring variations (e.g. polymorphisms), each with its own valid existence. This clone is substantially in agreement with the reference, but a complete review of all prevailing variants is recommended prior to use. [More info](#)

OTI Annotation: This clone was engineered to express the complete ORF with an expression tag. Expression varies depending on the nature of the gene.

Components: The ORF clone is ion-exchange column purified and shipped in a 2D barcoded Matrix tube containing 10ug of transfection-ready, dried plasmid DNA (reconstitute with 100 ul of water).

Reconstitution Method:

1. Centrifuge at 5,000xg for 5min.
2. Carefully open the tube and add 100ul of sterile water to dissolve the DNA.
3. Close the tube and incubate for 10 minutes at room temperature.
4. Briefly vortex the tube and then do a quick spin (less than 5000xg) to concentrate the liquid at the bottom.
5. Store the suspended plasmid at -20°C. The DNA is stable for at least one year from date of shipping when stored at -20°C.

RefSeq: [NM_033535.2](#), [NP_277077.1](#)

RefSeq Size: 3475 bp

RefSeq ORF:	1697 bp
Locus ID:	26234
Cytogenetics:	4p15.32
Domains:	LRR, F-box, LRR_CC
Protein Families:	Druggable Genome
Gene Summary:	<p>This gene encodes a member of the F-box protein family which is characterized by an approximately 40 amino acid motif, the F-box. The F-box proteins constitute one of the four subunits of ubiquitin protein ligase complex called SCFs (SKP1-cullin-F-box), which function in phosphorylation-dependent ubiquitination. The F-box proteins are divided into 3 classes: Fbws containing WD-40 domains, Fbls containing leucine-rich repeats, and Fbxs containing either different protein-protein interaction modules or no recognizable motifs. The protein encoded by this gene belongs to the Fbls class and, in addition to an F-box, contains several tandem leucine-rich repeats. Alternatively spliced transcript variants have been described for this locus. [provided by RefSeq, Aug 2010]</p>