

Product datasheet for **RG206070**

KCTD17 (NM_024681) Human Tagged ORF Clone

Product data:

Product Type: Expression Plasmids
Product Name: KCTD17 (NM_024681) Human Tagged ORF Clone
Tag: TurboGFP
Symbol: KCTD17
Mammalian Cell Selection: Neomycin
Vector: pCMV6-AC-GFP (PS100010)
E. coli Selection: Ampicillin (100 ug/mL)
ORF Nucleotide Sequence: >RG206070 representing NM_024681
Red=Cloning site Blue=ORF Green=Tags(s)

TTTTGTAATACGACTCACTATAGGGCGGCCGGGAATTCGTCGACTGGATCCGGTACCGAGGAGATCTGCC
GCC**CGATCGCC**

ATGAGGATGGAGGCCGGGAGGCAGCGCCCGCGGGGGCGGGCGGCCGCGCCAGGCGGCTGGGGCA
AGTGGGTGCGGCTCAACGTGGGGGGCACGGTGTTCCTGACCACCCGCGCAGACGCTGTGCCGCGAGCAGAA
GTCCTTCTCAGCCGCTGTGCCAGGGGAAGAGCTGCAGTCGGACCGGGATGAGACCGGGGCTACCTC
ATTGACCGTGACCCACCTACTTCGGGCCATCCTGAACCTCCTCCGGCATGGCAAGCTGGTGTCTGGACA
AGGACATGGCTGAGGAGGGGTCTGGAGGAAGCCGAGTTCTACAACATCGGCCCGCTGATCCGCATCAT
CAAAGACCGGATGGAAGAGAAGGACTACACGGTACCCAGGTCCCACCCAAGCATGTGTACCGCGTGCTG
CAGTGCCAGGAGGAGGAGCTCACGCAAATGGTCTCCACCATGTCTGATGGCTGGCGCTTCGAGCAGCTGG
TGAACATCGGCTCCTCTACAACACTACGGCAGCGAGGACCAGGCAGAGTTCTGTGTGTGGTGTCCAAGGA
GCTCCACAGCACCCAAACGGGCTGAGCTCAGAGTCCAGCCGCAAAACCAAGAGCACGGAGGAGCAGCTG
GAGGAGCAGCAGCAGGAGGAGGAGGTGGAGGAGGTGGAGGTGGAACAGGTGCAGGTGGAGGCAGATG
CACAGGAGAAAGGTTCCCGTCCGCACCCTCTCAGACCTGAGGCTGAGCTTGCAGTGAGGGCTTCTCCTCG
GCCCTCGCCCGCCCCAGAGCTGCCATCCCTGCTTTACAAGCCAGAGGCACCCGGATGTGAGGCCCA
GATCACCTCCAGGACTTGGGGTCCCATC

ACGCGTACGCGGCCGCTCGAG - GFP Tag - GTTTAA



[View online »](#)

Protein Sequence: >RG206070 representing NM_024681
 Red=Cloning site Green=Tags(s)

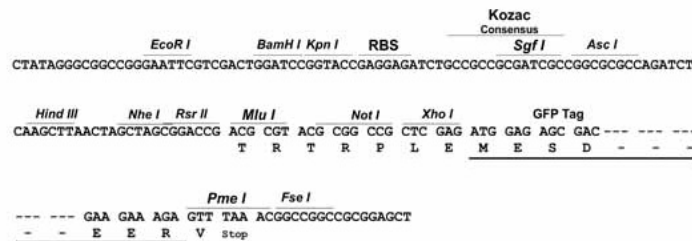
MRMEAGEAAPPAGAGGRAAGGWGKWRVLRNVGGTVFLTTRQTLCREQKSFLSRLCQGEELQSDRDETGAYL
 IDRDPYFGPILNFLRHGKLVLDKDMAEEGVLEAEFYNIIGPLIRIIRI KDRMEEKDYTVTQVPPKHVYRVL
 QCQEEELTQMVSTMSDGRWRFELVNIIGSSYNYGSEDQAEFLCVVSKELHSTPNGLSSESSRKTSTEEQL
 EEQQQQEEVEVEVEVQVQVEADAQEKSRPHPLRPEAELAVRASPRPLARPQSCHPCCYKPEAPGCEAP
 DHLQGLGVPI

TRTRPLE - GFP Tag - V

Restriction Sites: SgfI-MluI

Cloning Scheme:

Cloning sites used for ORF Shutting:



ACCN: NM_024681

ORF Size: 870 bp

OTI Disclaimer: The molecular sequence of this clone aligns with the gene accession number as a point of reference only. However, individual transcript sequences of the same gene can differ through naturally occurring variations (e.g. polymorphisms), each with its own valid existence. This clone is substantially in agreement with the reference, but a complete review of all prevailing variants is recommended prior to use. [More info](#)

OTI Annotation: This clone was engineered to express the complete ORF with an expression tag. Expression varies depending on the nature of the gene.

Components: The ORF clone is ion-exchange column purified and shipped in a 2D barcoded Matrix tube containing 10ug of transfection-ready, dried plasmid DNA (reconstitute with 100 ul of water).

Reconstitution Method:

1. Centrifuge at 5,000xg for 5min.
2. Carefully open the tube and add 100ul of sterile water to dissolve the DNA.
3. Close the tube and incubate for 10 minutes at room temperature.
4. Briefly vortex the tube and then do a quick spin (less than 5000xg) to concentrate the liquid at the bottom.
5. Store the suspended plasmid at -20°C. The DNA is stable for at least one year from date of shipping when stored at -20°C.

RefSeq: [NM_024681.2](#), [NP_078957.2](#)

RefSeq Size: 1704 bp

RefSeq ORF: 873 bp

Locus ID: 79734

UniProt ID: [Q8N5Z5](#)

Cytogenetics: 22q12.3

Protein Families: Ion Channels: Other

Gene Summary: This gene encodes a protein that belongs to a conserved family of potassium channel tetramerization domain (KCTD)-containing proteins. The encoded protein functions in ciliogenesis by acting as a substrate adaptor for the cullin3-based ubiquitin-conjugating enzyme E3 ligase, and targets trichoplein, a keratin-binding protein, for degradation via polyubiquitylation. A mutation in this gene is associated with autosomal dominant myoclonic dystonia 26. [provided by RefSeq, Nov 2016]

Product images:



Circular map for RG206070