

Product datasheet for **RG206061**

DENN (MADD) (NM_130472) Human Tagged ORF Clone

Product data:

Product Type:	Expression Plasmids
Product Name:	DENN (MADD) (NM_130472) Human Tagged ORF Clone
Tag:	TurboGFP
Symbol:	MADD
Synonyms:	DEEAH; DENN; IG20; NEDDISH; RAB3GEP; RabGEF
Mammalian Cell Selection:	Neomycin
Vector:	pCMV6-AC-GFP (PS100010)
E. coli Selection:	Ampicillin (100 ug/mL)
ORF Nucleotide Sequence:	>RG206061 representing NM_130472 Red=Cloning site Blue=ORF Green=Tags(s)

TTTTGTAATACGACTCACTATAGGGCGGCCGGAATTCGTCGACTGGATCCGGTACCGAGGAGATCTGCC
GCC**CGATCGCC**

ATGGTGCAAAAGAAGAAGTTCTGTCTCGGTTACTTGACTATCTAGTGATCGTAGGGGCCAGGCACCCGA
GCAGTGATAGCGTGGCCAGACTCTGAATTGCTACGGCGATACCCCTTGGAGGATCACACTGAGTTTCC
CCTGCCCCAGATGTAGTGTCTTCTGCCAGCCGAGGGTGCCTGAGCGTGGCAGCGGCGCATGAGC
CTTCGGGATGATACCTCTTTGTCTTACCCTCACTGACAAGGACTGGAGTCACGCGATATGGCATCT
GTGTTAACTTCTACCGCTCCTTCCAAAAGCGAATCTCTAAGGAGAAGGGGAAGGTGGGGCAGGGTCCCC
TGGGAAGGAAGGAACCCATGCCACCTGTGCCTCAGAAGAGGGTGGCACTGAGAGCTCAGAGAGTGGCTCA
TCCTGCAGCCTCTCAGTGCTGACTCTACCCCTGATGTGAACCAGTCTCCTCGGGGCAAACGCCGGGCCA
AGGCGGGGAGCCGCTCCCGCAACAGTACTCTCACGTCCCTGTGCGTGCTCAGCCACTACCCCTTCTTCTC
CACCTTCCGAGAGTGTTGTATACTCTCAAGCGCTGGTGGACTGCTGTAGTGAGCGCCTTCTGGGCAAG
AACTGGGCATCCCTCGAGGCGTACAAAGGGACACCATGTGGCGGATCTTACTGGATCGCTGCTGGTAG
AGGAGAAGTCAAGTGCCCTTCTGCATGACCTTCGAGAGATTGAGGCTGGATCTATCGATTGCTGCGCTC
CCCAGTACCCGTCTCTGGGCAGAAGCGAGTAGACATCGAGGCTTACCCCAAGAGCTCCAGCCAGCTCTG
ACCTTTGCTCTTCCAGACCCATCTCGATTACCCCTAGTGGATTTCCCACTGCACCTTCCCTGGAACCTC
TAGGTGTGGACGCGCTGTCTCCAGGTGCTAACCTGCATTCTGTTAGAGCACAAGGTGGTGCTACAGTCCCG
AGACTACAATGCACTCTCCATGTCTGTGATGGCATTCTGGCAATGATCTACCCACTGGAATATATGTTT
CCTGTCATCCCGCTGCTACCCACCTGCATGGCATCAGCAGAGCAGCTGCTGTTGGCTCCAACCCCGTACA
TCATTGGGGTTCCTGCCAGCTTCTTCTCTACAACTGGACTTCAAAATGCCTGATGATGTATGGCTAGT
GGATCTGGACAGCAATAGGGTGATTGCCCCACCAATGCAGAAGTGTGCCTATCCTGCCAGAACCAGAA
TCACTAGAGCTGAAAAAGCATTTAAAGCAGGCCTTGGCCAGCATGAGTCTCAACACCCAGCCCATCTCA
ATCTGGAGAAATTCATGAGGGCCAGGAGATCCCCCTTCTTGGGAAGGCTTCTAATGACCTGCAGTC
CACACCGTCCACTGAATCAACCCACTCATCTATGGCAATGATGTGGATTCTGTGGATGTTGCAACCAGG



GTTGCCATGGTACGGTTCTTCAATTCGCCAACGTGCTGCAGGGATTTTCAGATGCACACGCGTACCCTGC
 GCCTCTTTCCTCGGCCTGTGGTAGCTTTTCAAGCTGGCTCCTTTCTAGCCTCACGTCCCCGGCAGACTCC
 TTTTGCCGAGAAATTGGCCAGGACTCAGGCTGTGGAGTACTTTGGGGAATGGATCCTTAACCCACCAAC
 TATGCCTTTCAGCGAATTCACAACAATATGTTTGTATCCAGCCCTGATTGGTGACAAGCCAAAGTGGTATG
 CTCATCAGCTGCAGCCTATCCACTATCGCGTCTATGACAGCAATCCCAGCTGGCTGAGGCCCTGAGTGT
 ACCACCAGAGCGGACTCTGACTCCGAACCTACTGATGATAGTGGCAGTGATAGTATGGATTATGACGAT
 TCAAGCTCTTCTACTCCTCCCTTGGTGACTTTGTGCAAGTAAATGATGAAATGTGACATTAATGGTGATA
 CTCCCAATGTGGACCCTCTGACACATGCAGCACTGGGGGATGCCAGCGAGGTGGAGATTGACGAGCTGCA
 GAATCAGAAGGAAGCAGAAGAGCCTGGCCAGACAGTGAGAATCTCAGGAAAACACCCACTGCGCTCC
 AGCTCTAGCACCACAGCCAGCAGCAGCCCCAGCACTGTATCCACGGAGCCAACTCTGAACCTGCTGACT
 CTACGGAGATGGATGATAAGGCAGCAGTAGGCGTCTCCAAGCCCCCTCCTTCCGTGCCTCCAGCATTGG
 CAAATCGAACGTGGACAGACGTAGGCAGAAAATTGGAGAGGGGGCTCAAAGCTGCTGCGGCCAACAGC
 TTGAGACTGGCAAGTACTCAGATGCAGAGTCACTCTCGGGCAAGCTCCCAACTCCACCGTCTCCA
 ACACCAGCACCAGGGCTTCGGGGGCATCATGTCTTTGCCAGCAGCCTCTATCGGAACACAGTACCAG
 CTTGAGTCTTTCAAACCTCACACTGCCACCAAAGGTGCCGAGAGAAGGCCACGCCCTTCCCCAGTCTG
 AAAGGAAACAGGAGGGCGTTAGTGGATCAGAAGTCATCTGTCTTAACACAGCCCAACAGTGAAAAGAG
 AACCTCCATCACCCAGGGTCGATCCAGCAATTCTAGTGAGAACCAGCAGTTCCTGAAGGAGGTGGTGCA
 CAGCGTCTGGACGGCCAGGGAGTTGGCTGGCTCAACATGAAAAGGTGCGCGGGCTGCTGGAGAGCGAG
 CAGCTGCGAGTCTTTGTCTGAGCAAGTGAACCCGATGGTGCAGTCAAGGACGATGCCCGGCAGGACA
 TCATCCCGGATGTGGAGATCAGTCGGAAGGTGTACAAGGGAATGTTAGACCTCCTCAAGTGTACAGTCT
 CAGCTTGGAGCAGTCTATGCCACGCGGGTCTGGGTGGCATGCCAGCATCTTTGGGTTTTTGGAGATT
 GCCCAGACCCACTACTATAGTAAAGAACCAGACAAGCGGAAGAGAAGTCCAACAGAAAGTGTAAATCCC
 CAGTTGGCAAGGATCCTGGCCTAGTGGCGGGGGACCCAAAGGCTATGGCACAATGAGAGTTCCACA
 ACTGGGACCTCGGGCACCAAGTGCACAGGAAAGGGTCTTAAGGAACTGGACACCAAGAAGTTTAAAGGAA
 GAAAATTTTATAGCATCTATTGGCCTGAAGTAATCAAACCTGTCTTTGACCTTGGTGAGACAGAGGAGA
 AAAAGTCCAGATCAGCGCAGACAGTGGTGTGAGCCTGACGTCTAGTTCCAGAGGACTGATCAAGACTC
 TGTCTCGGCGTGTGAGTCCAGCTGTTATGATCCGCAGCTCAAGTCAGGATTCTGAAGTTAGACCCTGAGT
 AATAGCTCTGGAGAGACCCTTGGAGCTGACAGTACTTGGAGCAGCAATGCAGGTGATGGACCAGGTGGCG
 AGGGCAGTGTTCACCTGGCAAGCTCTCGGGCACTTTGTCTGATAGTAAAATTGAGACCAACTCTGCCAC
 AAGCACTATCTTTGGTAAAGCCACAGCTTGAAGCCAAGCATAAAGGAGAAGCTGGCAGGCAGCCCCATT
 CGTACTTCTGAAGATGTGAGCCAGCGAGTCTATCTCTATGAGGGACTCCTAGGCAAGAGCGTTCTACTT
 TATGGGACCAAAATGCAATCTGGGAAGATGCCTTCTTAGATGCTGTGATGTTGGAGAGAGAAGGGATGGG
 TATGGACCAGGGTCCCCAGGAAATGATCGACAGGTACCTGTCCCTTGGAGAACATGACCCGGAAGCGCCTG
 GAAGATGATGAAGATCGCTTGTGGCCACACTTCTGCACAACCTCATCTCTACATGCTGCTGATGAAGG
 TAAATAAGAAATGACATCCGCAAGAAGGTGAGGCGCCTAATGGGAAAGTCGCACATTGGGCTTGTGTACAG
 CCAGCAAAATCAATGAGGTGCTTGTGATCAGCTGGCGAACCTGAATGGACGCGATCTCTATCTGGTCCAGT
 GGCAGCCGGCAGATGAAGAAGCAGACATTTGTGGTACATGCAGGGACAGATACAAACGGAGATATCTTTT
 TCATGGAGGTGTGCGATGACTGTGTGGTGTTCGTAAGTAAATCGGAACAGTGTATGAGCGCTGGTGGTA
 CGAGAAGCTCATCAACATGACCTACTGTCCCAAGACGAAGGTGTTGTGCTTGTGGCGTGAAGTGGCTCT
 GAGACCCAGCTCAACAAGTTCTATACTAAAAAGTGTGGGAGCTGTACTACTGTGTGAAGGACAGCATGG
 AGCGCGCTGCCGCCGACAGCAAAGCATCAAACCCGACCTGAATTGGGTGGCGAGTTCCCTGTGACGGA
 CCTGAAGACTGGTGGGGTGGCCTGCTGCAGGTGACCCTGGAAGGGATCAACCTCAAATTCATGCACAAAT
 CAGGTTTTTCATAGAGCTGAATCACATTAAGAAAGTGAATACAGTTCGAGGCGTCTTTGTCTGGAGGAAT
 TTGTTCTGAAATTAAGAAGTGGTGGCCACAAGTACAAGACCAATGGCCCAGAAATCTGCTACTC
 CGTATTATGTCTTCTCGTACGTGGCTGCAGTTCATAGCAGTGAGGAAGATCTCAGAACCCCGCCCGG
 CCTGTCTTAGC

AGCGGACCGACGCGTACGCGGCCGCTCGAG - GFP Tag - GTTTAA

Protein Sequence: >RG206061 representing NM_130472
 Red=Cloning site Green=Tags(s)

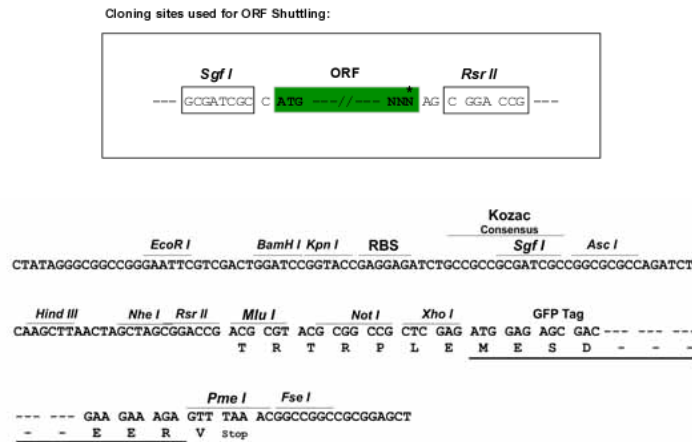
```

MVQKKKFCPRLLDYLVIIGARHPSSDSVAQTPELLRRYPLEDHTEFFLPPDVVFFCQPEGCLSVRQRMS
LRDDTSFVFTLTDKDTGVTRYGICVNFYRSFQKRISKEKGGGAGSRGKEGTHATCASEEGGTESSESGS
SLQPLSADSTPDVNQSPRGKRRAKAGSRSRNSTLTSCLVLSHYPPFFSTFRECLYTLKRLVDCCSERLLGK
KLGIPRGVQRDTMWRIFTGSLLVEEKSSALLHDLREIEAWIYRLLRSPVPVSGQKRVDIEVLPQELQPAL
TFALPDPSPRFTLVDFPLHLPLELLGVDAQLVLTCLLLEHKVVLQSRDYNALSMSVMAFVAMIYPLEYMF
PVIPLLPCTMASAEQLLLAPTPYIIGVPASFFLYKLDKMPDDVWLVDLDSNRVIAPTNAEVLPIPEPE
SLELKKHLKQALASMSLNTQPILNLEKFHEGQEIPLLLGRPSNDLQSTPSTEFNLIYGNVDVSDVATR
VAMVRRFNSANVLQGFQMHTRTLRLFPRPVVAFQAGSFLASRPRQTPFAEKLARTQAVEYFGEWILNPTN
YAFQRIHNNMFDPALIGDKPKWYAHQLQPIHYRVYDSNSQLAEALSVPPERDSDEPTDSDSGSDSMDYDD
SSSSYSSLGDFVSEMMKCDINGDTPNVDPLTHAALGDASEVEIDELQNQKEAEEPGPDSSENSQENTPLRS
SSSTTASSPSTVIHGANSEPADSTEMDDKAAVGVSKPLPSVPPSIGKSNVDRRQAEIGEGAQKLLRPN
LRLASDSDAESDRASSPNSTVSNSTSTEGFGGIMSFASSLYRNHSTSFSLSNLTLPTKGAREKATPFPSL
KGNRRALVDQKSSVIKHSPTVKREPPSPQGRSSNSSENQQFLKEVVHVSVDGQGVWLNMMKVRGLLESE
QLRVFVLSKLNRMVQSEDDARQDIIPDVEISRKYKGMDDLKCTVLSLEQSYAHAGLGGMASIFGFLEI
AQTHYYSKEPDKRKRSPTESVNTPVGKDPGLAGRGDPKAMAQLRVPQLGPRASATGKGPKELDTRSLKE
ENFIASIGPEVIKPVFDLGETEEKKSQISADSGVSLTSSSQRTDQDSVIGVSPAVMIRSSSQDSEVSTVS
NSSGETLGADSDLSSNAGDGGGEGSVHLASSRGTLDSEIETNSATSTIFGKAHSLKPSIKEKLAGSPI
RTSEDEVQRVYLYEGLLGKERSTLWDQMFWEDAFLDVMLEREGMGMDQGPQEMIDRYLSLGEHDRKRL
EDDEDRLATLLHNLISYMLLMKVNKNDIRKKVRRMLMGKSHIGLYYSQQINEVLQDLANLNGRDLIWS
GSRHMKKQTFVVHAGDTNGDIFFMVEVDCDVLRSNIGTVYERWYWEKLNIMTYCPKTKVLCWRNGS
ETQLNKFYTKKRELYYCVKDSMERAARQSSIKPGPELGGFPVQDLKTGEGGLLQVTLLEGINKFMHN
QVFIELNHIKKCNVIRGVFVLEEFVPEIKEVVSHPYKTPMAHEICYSVLCLFSYVAVHSSSEDLRTPPR
PVSS
  
```

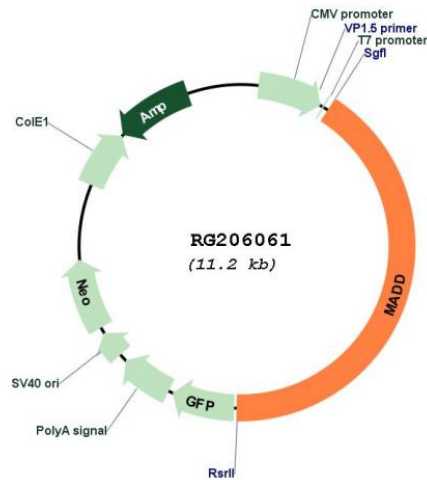
SGPTRTRRLE - GFP Tag - V

Restriction Sites: SgfI-RsrII

Cloning Scheme:



Plasmid Map:



ACCN: NM_130472

ORF Size: 4635 bp

OTI Disclaimer: The molecular sequence of this clone aligns with the gene accession number as a point of reference only. However, individual transcript sequences of the same gene can differ through naturally occurring variations (e.g. polymorphisms), each with its own valid existence. This clone is substantially in agreement with the reference, but a complete review of all prevailing variants is recommended prior to use. [More info](#)

OTI Annotation: This clone was engineered to express the complete ORF with an expression tag. Expression varies depending on the nature of the gene.

Components: The ORF clone is ion-exchange column purified and shipped in a 2D barcoded Matrix tube containing 10ug of transfection-ready, dried plasmid DNA (reconstitute with 100 ul of water).

Reconstitution Method:

1. Centrifuge at 5,000xg for 5min.
2. Carefully open the tube and add 100ul of sterile water to dissolve the DNA.
3. Close the tube and incubate for 10 minutes at room temperature.
4. Briefly vortex the tube and then do a quick spin (less than 5000xg) to concentrate the liquid at the bottom.
5. Store the suspended plasmid at -20°C. The DNA is stable for at least one year from date of shipping when stored at -20°C.

RefSeq: [NM_130472.1](#), [NP_569828.1](#)

RefSeq Size: 5710 bp

RefSeq ORF: 4638 bp

Locus ID: 8567

UniProt ID: [Q8WXG6](#)

Cytogenetics: 11p11.2

Protein Families: Druggable Genome

Gene Summary: Tumor necrosis factor alpha (TNF-alpha) is a signaling molecule that interacts with one of two receptors on cells targeted for apoptosis. The apoptotic signal is transduced inside these cells by cytoplasmic adaptor proteins. The protein encoded by this gene is a death domain-containing adaptor protein that interacts with the death domain of TNF-alpha receptor 1 to activate mitogen-activated protein kinase (MAPK) and propagate the apoptotic signal. It is membrane-bound and expressed at a higher level in neoplastic cells than in normal cells. Several transcript variants encoding different isoforms have been described for this gene. [provided by RefSeq, Jul 2008]