

Product datasheet for **RG206047**

CBLB (NM_170662) Human Tagged ORF Clone

Product data:

Product Type:	Expression Plasmids
Product Name:	CBLB (NM_170662) Human Tagged ORF Clone
Tag:	TurboGFP
Symbol:	CBLB
Synonyms:	Cbl-b; Nbla00127; RNF56
Mammalian Cell Selection:	Neomycin
Vector:	pCMV6-AC-GFP (PS100010)
E. coli Selection:	Ampicillin (100 ug/mL)



[View online »](#)

ORF Nucleotide Sequence:

>RG206047 representing NM_170662
 Red=Cloning site Blue=ORF Green=Tags(s)

TTTTGTAATACGACTCACTATAGGGCGGCCGGAATTCGTCGACTGGATCCGGTACCGAGGAGATCTGCC
 GCC**CGGATCGCC**

ATGGCAAACCTCAATGAATGGCAGAAACCCTGGTGGTGCAGGAGGAAATCCCCGAAAAGTCAATTTTGG
 GTATTATTGATGCTATTCAGGATGCAGTTGGACCCCTAAGCAAGCTGCCGCAGATCGCAGGACCGTGGA
 GAAGACTTGAAAGCTCATGGACAAAGTGGTAAGACTGTGCCAAAAATCCCAAACCTCAGTTGAAAAATAGC
 CCACCATATATACTTGATATTTTGCCTGATACATATCAGCATTACGACTTATATTGAGTAAATATGATG
 ACAACCAGAAACTTGCCCAACTCAGTGAGAATGAGTACTTTAAAACTACATTGATAGCCTTATGAAAA
 GTCAAAACGGGCAATAAGACTCTTTAAGAAGGCAAGGAGAGAATGTATGAAGAACAGTCACAGGACAGA
 CGAAATCTCACAAAACCTGTCCTTATCTTCAGTCACATGCTGGCAGAAATCAAAGCAATCTTTCCCAATG
 GTCATCCAGGGAGATAACTTTTCGTATCACAAAAGCAGATGCTGCTGAATTCTGGAGAAAGTTTTTTGG
 AGACAAAACCTATCGTACCATGGAAGTATTCAGACAGTGCCTTCATGAGGTCCACCAGATTAGCTCTGGC
 CTGGAAGCAATGGCTCTAAAATCAACAATTGATTTAACTTGCAATGATTACATTTTCAATTTTGAATTTG
 ATATTTTTACCAGGCTGTTTCAGCCTTGGGGCTCTATTTTGCAGAAATGGAAATTTCTTAGCTGTGACACA
 TCCAGGTTACATGGCATTCTCACATATGATGAAGTAAAGCACGACTACAGAAATATAGCACCAAACCC
 GGAAGCTATATTTCCGGTTAAGTTGCACTCGATTGGGACAGTGGGCCATTGGCTATGTGACTGGGGATG
 GGAATATCTTACAGACCATACCTCATAACAAGCCCTTATTTCAAGCCCTGATTGATGGCAGCAGGGAAGG
 ATTTTATCTTTATCCTGATGGGAGGAGTTATAATCCTGATTTAACTGGATTATGTGAACCTACACCTCAT
 GACCATATAAAAGTTACACAGGAACAATATGAATTATATTGTGAAATGGGCTCCACTTTTCAGCTCTGTA
 AGATTTGTGCAGAGAATGACAAAGATGCAAGATTGAGCCTTTGTGGCATTGATGTGCACCTCTGCCT
 TACGGCATGGCAGGAGTCGGATGGTCAGGCTGCCCTTTCTGTCGTTGTGAAATAAAAGGAACTGAGCCC
 ATAATCGTGGATCCCTTTGATCCAAGAGATGAAGGCTCCAGTGTGTCAGCATCATTGACCCCTTTGGCA
 TGCCGATGCTCGACTTGACGACGATGATGATCGTGAGGAGTCCCTGATGATGAATCGGTTGGCAAACGT
 CCGAAAGTGCCTGACAGGCAGAACTCACAGTCACATCACAGGATCCTCTCCCCTTGCCAGAGAAGA
 AAGCCACAGCCTGACCCACTCCAGATCCACATCTAAGCCTGCCACCCGTGCCTCCTCGCTGGATCTAA
 TTCAGAAAGGCATAGTTAGATCTCCTGTGGCAGCCCAACGGGTTACCAAAGTCTTCTCCTTGCATGGT
 GAGAAAACAAGATAAACCCTCCAGCACACCTCCTCCCTTAAGAGATCCTCCTCCACCACCCTGAA
 AGACCTCCACCAATCCCACCAGACAATAGACTGAGTAGACACATCCATCATGTGGAAGCGTGCCTTCCA
 AAGACCCGCCAATGCCTCTTGAAGCATGGTGCCCTCGGGATGTGTTGGGACTAATCAGCTTGTGGGATG
 TCGACTCCTAGGGGAGGGCTCTCCAAAACCTGGAATCACAGCGAGTTCAAATGTCAATGGAAGGCACAGT
 AGAGTGGGCTCTGACCCAGTCTTATGCGGAAACACAGACGCCATGATTTGCCTTTAGAAGGAGCTAAGG
 TCTTTTCCAATGGTCACCTTGGAAAGTGAAGAATATGATGTTTCTCCCGCTTTCTCCTCCTCCTCCAGT
 TACCACCTCCTCCTAGCATAAAGTGTACTGGTCCGTTAGCAAATCTCTTTTCCAGAAAAACAAGAGAC
 CCAGTAGAGGAAGATGATGATGAATAACAAGATTCCTTCATCCACCCTGTTTCCCTGAATCACAAACAT
 CTCATTGTGATAATGTAACCTCCTGTTCCGGTCTGTGATAATGGTCACTGTATGCTGAATGGAACACA
 TGGTCCATCTTTCAGAGAAGAAATCAAACATCCCTGACTTAAGCATATATTTAAAGGGAGATGTTTTGAT
 TCAGCCTCTGATCCCGTGCCATTACCACCTGCCAGGCCTCAAACCTCGGGACAATCAAAGCATGGTTCTT
 CACTCAACAGGACGCCCTCTGATTATGATCTTCTCATCCCTCATTAGGTGAAGATGCTTTTGTGCCCC
 CCTCCATCTCTCCACCTCCCCACCTCCTGCAAGGCATAGTCTCATTGAACATTCAAAACCTCCTGGC
 TCCAGTAGCCGGCCATCCTCAGGACAGGATCTTTTTCTTCTTCTTCCAGATCCCTTTGTTGATCTAGCAA
 GTGGCCAAGTTCCTTTGCCTCCCGCTAGAAGGTTACCAGGTGAAAATGTCAAACAAACAGAACATCACA
 GGACTATGATCAGCTTCTTTCATGTTTCAGATGGTTCACAGGCACCAGCCAGACCCCTAAACCACGACCG
 CGCAGGACTGCACCAGAAATCACACAGAAAACCCATGGGCCCTGAGGGGCATTGAAAAATGTCGATG
 CAAAAATTGCAAACCTCATGGGAGAGGTTATGCCTTTGAAGAGGTGAAGAGAGCCTTAGAGATAGCCCA
 GAATAATGTGCAAGTTGCCCGGAGCATCCTCCGAGAATTTGCCTTCCCTCCTCAGTATCCCCACGCTCA
 AATCTA

AG**CGGACCG**ACGCGTACGCGGCCGCTCGAG - GFP Tag - GTTTAA

Protein Sequence: >RG206047 representing NM_170662
 Red=Cloning site Green=Tags(s)

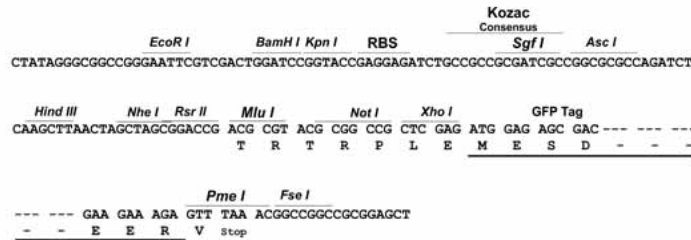
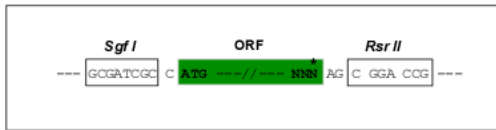
MANSMNGRNPGGRRGNPRKGRILGIIDAIQDAVGPPKQAAADRRTVEKTWKLMDKVVRLLCQNPKLQLKNS
 PPYILDILPDTYQHLRLILSKYDDNQKLAQLSENEYFKIYIDSLMKKSKRAIRLFKEGKERMYYEQSODR
 RNLTKLSLIFSHMLAEIKAIIFPNGQFQGDNFRIKADAAEFWRKFFGDKTIVPWKVFROQLHEVHQISSG
 LEAMALKSTIDLTCNDYISVFEFDIFTRLFQPWGSI LRNWNFLAVTHPGYMAFLTYDEVKARLQKYSTKP
 GSYIFRLSCTRLGQWAIYVVTGDGNILQTI PHNKPLFQALIDGSREGFYLYPDGRSYNPDLTGLCEPTPH
 DHIKVTQEYEL YCEMGSTFQLCKICAENDKDVKIEPCGHLMCT SCLTAWQESDQGQPCFRCCEIKGTEP
 IIVDPFDRDEGSRCCSIIDPFGMPMLDLDDDDREESLMNRLANVRKCTDRQNSPVTSPGSSPLAQR
 KPQPDPLQI PHLSLPPVPPRLDLIQKGI VRSPCGSPTGSPKSSPCMV RKQDKPLAPPPPLRDP PPPPE
 RPPPIPPDNRLSRHIHVESVPSKDPMPLEAWCPRDVF GTNQLVGCRLLEGESPKGITASSNVNGRHS
 RVGSDPVL MRKHRRDLPLEGAKVFSNGHLGSEEYDVP PRLSPPPVTTLLPSIKCTGPLANSLSEKTRD
 PVEEDDDEYKIPSSHPVLSNSQPSHCHNVKPPVRSCDNHGCM LNTHGPSSEKKSNI PDLSIYLGKDVFD
 SASDPVPLPPARPPTRDNPKHGSSLNRTPSDYDLLIPPLGEDAFDALPPSLPPPPPARHSLIEHSKPPG
 SSSRPSSQDLFLLPSPDFV LASGQVPLPPARRLPGENVKTNRTSQDYDQLPSCSDGSQAPARPPKPRP
 RRTAPEIHRKPHGPEAALENVDAKIAKLMGEGYAFEEVKRALEIAQNNVEVAR SILREFAFPPVPSPRL
 NL

SGPTRRRLE - GFP Tag - V

Restriction Sites: SgfI-RsrII

Cloning Scheme:

Cloning sites used for ORF Shuttling:



ACCN: NM_170662

ORF Size: 2946 bp

OTI Disclaimer: Due to the inherent nature of this plasmid, standard methods to replicate additional amounts of DNA in E. coli are highly likely to result in mutations and/or rearrangements. Therefore, OriGene does not guarantee the capability to replicate this plasmid DNA. Additional amounts of DNA can be purchased from OriGene with batch-specific, full-sequence verification at a reduced cost. Please contact our customer care team at custsupport@origene.com or by calling 301.340.3188 option 3 for pricing and delivery.

The molecular sequence of this clone aligns with the gene accession number as a point of reference only. However, individual transcript sequences of the same gene can differ through naturally occurring variations (e.g. polymorphisms), each with its own valid existence. This clone is substantially in agreement with the reference, but a complete review of all prevailing variants is recommended prior to use. [More info](#)

OTI Annotation: This clone was engineered to express the complete ORF with an expression tag. Expression varies depending on the nature of the gene.

Components: The ORF clone is ion-exchange column purified and shipped in a 2D barcoded Matrix tube containing 10ug of transfection-ready, dried plasmid DNA (reconstitute with 100 ul of water).

Reconstitution Method:

1. Centrifuge at 5,000xg for 5min.
2. Carefully open the tube and add 100ul of sterile water to dissolve the DNA.
3. Close the tube and incubate for 10 minutes at room temperature.
4. Briefly vortex the tube and then do a quick spin (less than 5000xg) to concentrate the liquid at the bottom.
5. Store the suspended plasmid at -20°C. The DNA is stable for at least one year from date of shipping when stored at -20°C.

RefSeq: [NM_170662.2](#)

RefSeq Size: 3976 bp

RefSeq ORF: 2949 bp

Locus ID: 868

UniProt ID: [Q13191](#)

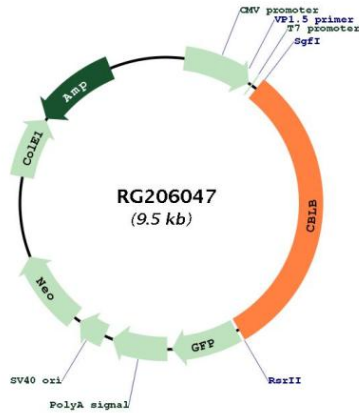
Cytogenetics: 3q13.11

Protein Families: Druggable Genome

Protein Pathways: Chronic myeloid leukemia, Endocytosis, ErbB signaling pathway, Insulin signaling pathway, Jak-STAT signaling pathway, Pathways in cancer, T cell receptor signaling pathway, Ubiquitin mediated proteolysis

Gene Summary:

This gene encodes an E3 ubiquitin-protein ligase which promotes proteasome-mediated protein degradation by transferring ubiquitin from an E2 ubiquitin-conjugating enzyme to a substrate. The encoded protein is involved in the regulation of immune response by limiting T-cell receptor, B-cell receptor, and high affinity immunoglobulin epsilon receptor activation. Studies in mouse suggest that this gene is involved in antifungal host defense and that its inhibition leads to increased fungal killing. Manipulation of this gene may be beneficial in implementing immunotherapies for a variety of conditions, including cancer, autoimmune diseases, allergies, and infections. [provided by RefSeq, Sep 2017]

Product images:


Circular map for RG206047