

Product datasheet for **RG206037**

DENND2B (NM_213618) Human Tagged ORF Clone

Product data:

Product Type:	Expression Plasmids
Product Name:	DENND2B (NM_213618) Human Tagged ORF Clone
Tag:	TurboGFP
Symbol:	DENND2B
Synonyms:	HTS1; p126; ST5
Mammalian Cell Selection:	Neomycin
Vector:	pCMV6-AC-GFP (PS100010)
E. coli Selection:	Ampicillin (100 ug/mL)
ORF Nucleotide Sequence:	>RG206037 representing NM_213618 Red=Cloning site Blue=ORF Green=Tags(s)

TTTTGTAATACGACTCACTATAGGGCGGCCGGAATTCGTCGACTGGATCCGGTACCGAGGAGATCTGCC
GCC**CGATCGCC**

ATGACCATGACTGCCAACAGAATTCCAGCATCACCCACGGAGCTGGTGGCACTAAAGCCCCTCGGGGA
CTCTGAGCAGGTCTCAGTCAGTCTCTCCACCTCCAGTTCTCTCCCAACCAAGGAGTCCCCTACCCGCT
CAGTGATAGTGAAACCTCAGCCTGCAGGTACCCAGCCACTCCAGCTCCCGGTGCTCCTCAAGGACCGG
CACCCCCAGCTCCTTACCCCAAGATCCTCAAGATCCCTCCCAAGATACTTCCCAACCCACTGTCCCT
TCAAGACCGCCAGCTTCGGTTATTTGGACAGAAGCCCTTCGGCGTGCAAGAGAGACGCCAAAAGGAAAG
TGTCCAAGGCGCAGCCCAGGATGTAGCAGGGGTGCTGCCTGCCTCCCTTGCACAGAGCAGCCATTC
CCGGGGCCAGCAGCTGGCCCCGGGGCGTCTTGCTGACCCGTACCGGTACCCGCGCCACAGCCTGGGCA
TCCGGGAGAAGATATCAGCATGGGAAGGTGCGCGAGAGGCGTGCAGGATGAGCATGTGTGGAGAGAA
GCGGGAGGGCTCTGGGAGCGAGTGGGCGCCAGTGAGGGCTGCCAGCCTGGGCTGTCCAGCGTGGTG
CCGTCCCCTGCAGCTCTGAAAAGACCTTTGATTTCAAGGGCCTCCGAGGATGAGCAGGACCTTCTCCG
AGTGTTCCTACCCAGAGACTGAGGAGGAGGAGAGGCGCTCCCTGTCGGGACTTTTCTACCGGTGGA
GAAACGGCTGGGCCGAGTGAGCCAGCGCCTTCTCAGGGGCATGGCAGCAGGAAGGAGAGCTCAGCA
GTGCTGAGCCGGATCCAGAAAATTGAACAGGTCTGAAGGAGCAGCCGGGCGGGGCTCCCCAGCTCC
CCAGCAGCTGCTACAGCGTGGACCGGGGAAAAGGAACACTGGAACCTTGGGCTCCTTGGAGGAGCCGGC
AGGGGGCCGAGTGTGAGCGCTGGCAGCCGGGAGTCCGAGTGGTGGTGTGCGGGGAGGCGGGCCCA
CCCCAGAGAGGGAAGGCAGTGGTTCCACTAAGCCGGGACCCTGGAATAGCCCTAGCTCCCAGCGGC
TGCCATCGAAGAGTTCCCTCGATCCCGCTGTGAACCTGTCCCAAAACCAAGCGCACCTTTGAATACGA
GGCTGACAAGAACCCCAAGAGTAAGCCAGTAATGGTCTACCTCCTTACCCACACTGTGCTCCACCT
CCCTTGCCTCCACCCAGCCCCGCGAGTACCCGGAGACCAAGAAGGACATGCGTGGTACCAGT
CCCAGAGCAGAAAATCCTTTGAGTTTGGAGTGCATCCAGTCTCCAGTCCCTGTACCCTCTTCTCCAC
TGAGAATGGTACTGAGAACCAACCAAGTTGGATCCAAAAGCACTTTAGAAGAAAATGCCTATGAAGAT



[View online »](#)

```

ATTGTGGGAGATCTGCCAAGGAGAATCCATATGAGGATGTGGACTTAAAGAGCCGAAGAGCAGGACGAA
AATCCCAGCAACTGTCTGAGAACTCCTTGGACTCTTTCACACAGGATGTGGAGTCCTCAGGACAGGAAGTA
CAACAGCCCGCCACACAGCTTTCCTGAAACCAACAGCCAGTCCCTGCGCAGTGGAACTGGTCAGAA
AGGAAGAGCCACCGGCTGCCACGATTACCAAGAGGCACAGCCATGACGACATGCTGCTGGCTCAGC
TGAGTCTGCCGTCTCACCTCCAGCCTCAATGAAGACAGCCTCAGCACCACCAGCGAGCTGCTGTCCAG
CCGCCGGGCCCGCCATTCCCAAGCTTGTCCAAGAATAACTCCATCTACAATGCCAAGAGAGGAAAG
AAGAGATTAATAAAGTTGTCTATGTCCAGACTTGAACAGCATCACTGAGAGATGAAAACAGTGGAGCG
AGAGCGACTCTGATGACAGGTTCAAAGCCACACACAGCGCTGTCCACATCCAGTCGATGCTGAAGCG
CGCCCCAGCTATCGCACGCTGGAGCTGGAGCTGCTGGAGTGGCAGGAGCGGGAGCTTTTTGAGTACTTT
GTGGTGGTGTCCCTCAAGAAGAAGCCATCGCGAAACACCTACCTCCCCGAAGTCTCTACCAGTTTCCCA
AGCTGGACCGACCACCAAGCAGATGCGAGAGGCAGAGGAAAGGCTCAAAGCCATTTCCAGTTTGGCTT
CCCTGATGCCAAGGACTGGCTTCTGTGCAGAGTATAGCAGTGAGACCTTTTCTTTCATGCTGACTGGG
GAAGATGGCGGCAGACGCTTTGGCTACTGCAGGCGTACTGCCAAGTGGGAAAGGGCCCGGTTGCCAG
AGGTGACTGTGCATCAGCCGCTTGGCTGCTTCGGCTTGTTCCTCAAGGTCTAGATGAGGTGGAGCG
CCGGCGTGGGATCTCCGCTGCATTGGTCTATCCTTTTCATGAGAAGTCTCATGGAGTGCCTTCCCAGCC
CCAGGGAAGACCATCAAAGTGAAGACATTCCTGCCAGGTGCTGGCAATGAGGTGTAGAGCTGCGGCGGC
CCATGGACTCAAGGCTGGAGCACGTGGACTTTGAGTGCCTTTTTACCTGCCTCAGTGTGCCCCAGCTCAT
CCGAATCTTTCCTCACTGCTGCTGGAGCGCGGGTCATTTTTGTGGCAGATAAGCTCAGTACCCTCTCC
AGCTGCTCCCACGCGGTGGTGGCCTTGTCTACCCCTTCTCCTGGCAGCACACCTTCACTTCTGTCTCC
CGGCTCCATGATTGACATCGTCTGCTGTCCCACCCCTTCTGGTTGGCTGCTCTCCAGCTCCCTCCC
CAAAGTGAAGGAGCTGCCTGTGGAGGAGCGCTGATGGTGAATCTGGGATCTGACCGATTCCAGCAGAC
ATGGACGACGAAGACACGTTGTTACCTAGGAAGTTACAGGCAGCTCTGGAGCAGGCTCTGGAGAGGAAGA
ATGAGCTGATCTCCAGGACTCTGACAGGACTCCGACGATGAATGTAATACCCTCAATGGGCTGGTGTG
GGAGGTGTTTATCCGTTCTTTGTGGAGACCGTTGGGCACTACTCCCTCTTTCTGACACAGAGTGAGAA
GGAGAGAGGGCCTTTCAGCGAGAGGCTTCCGCAATCTGTGGCCTCCTCAAAGCATCCGCGCTTTCTTG
AGGTTTTTATGGAGTCTCAGATGTTTGGCTTTCATCCAAGACAGGAGCTAAGAAAGTGTGGGCAAA
GGGCTTTTTGAGCAGCGAGTGGAGCAGTACTTAGAAGAATCCAGACACTGAGCAGAGTGAATGAAT
AAGTTTCTCCGAGTTTGGGCAACAAAATGAAGTTTCTCCACAAGAAGAAT
    
```

ACGCGTACGCGGCCGCTCGAG - GFP Tag - GTTTAA

Protein Sequence:

>RG206037 representing NM_213618
 Red=Cloning site Green=Tags(s)

```

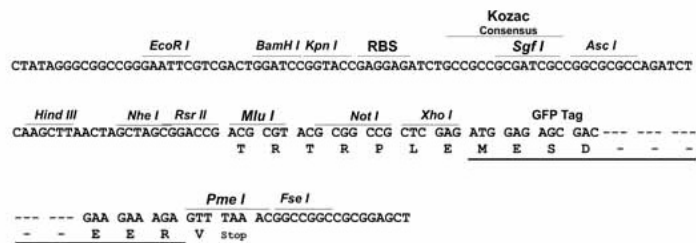
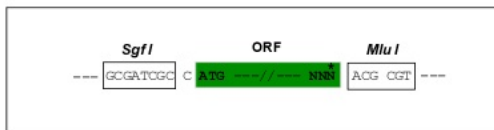
MTMTANKNSSITHGAGGTKAPRGLSRSQSVSPPPVLSPPRSPYIPLSDSETSACRYPSHSSSRVLLKDR
HPPAPSPQNPQDPSPTSPPTCPFKTASFGYLDSPSACKRDAQKESVQAAQDVAGVAACLPLAQSTPF
PGPAAGPRGVLTRTGTRAHSLGIREKISAWEGRREASPRMSMCGEKREGSGSEWAASEGCPSLGCPSV
PSPCSSEKTFDFKGLRRMSRTFSECSYPETEEEGEALPVRDSFYRLEKRLGRSEPSAFLRGHGRKESSA
VLSRIQKIEQVLKEQPGRGLPQLPSSCYSDRGRKNTGLGSLPEEPAGGASVSAGSRAVGVAGVAGEAGP
PPEREGSGSTKPGTPGNSSPQLPSKSSLDPAVNPVPPKPKRTFEYEADKNPKSKPSNGLPPSPTAAPP
PLPSTPAPPVTRRPPKDMRGHRKSQSRKSFEDASSLQSLYPSPTENGTENQPKFGSKSTLEENAYED
IVGDLPKENPYEDVDLKSRRAGRKSQQLSENLSLHRMWSPPDRKYNPPTQLSLKPNSSQLRSGNWE
RKSHRLPRLPKRHSHDDMLLLAQLSLPSSPSSLNEDSLSTSELLSSRRARRIPKLVQRTNSIYNAKRGK
KRLKLSMSSIETASLRDENSESESDSDRFKAHTQRLVHIQSMKRAPSYRTLELELELWQERELFEYF
VVVSLKKKPSRNTYLPESYQFPKLDKQREAEERLKAIPQFCFPAKDWPVSEYSSETFSFMLTG
EDGRRRFYCRLLPSGKPRLPVYCVISRLGCFGLFSKVLDEVERRRIGISAALYYPFMRSLMESPPFA
PGKTIKVKTFPLPGAGNEVLELRPMDSRLEHVDFECLFTCLSVRQLIRIFASLLERRVIFVADKLSLTS
SCSHAVVALLYPFSWQHTFIPVLPASMDIVCCPTPFLVGLLSSSLPKLKELPVEALMVNLGSDRFIRQ
MDEDTLLPRKLQAALQALERKNELISQSDSDSDDECNTLNLVSEVFIFFVETVGHYSLFLTQSEK
GERAFQREAFRKSVAASKSIRRFLEVFMSQMFAGFIQDRELKCRKAGLFEQRVEQYLEELPDTEQSGMN
KFLRGLGNKMKFLHKKK
    
```

TRTRPLE - GFP Tag - V

Restriction Sites: SgfI-MluI

Cloning Scheme:

Cloning sites used for ORF Shuttling:



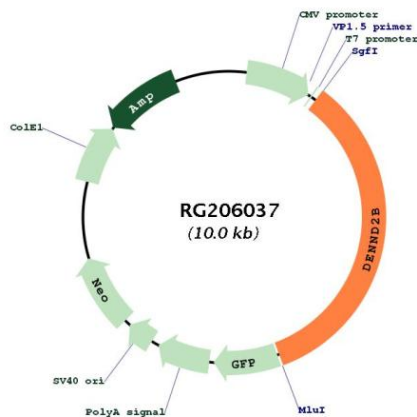
ACCN: NM_213618

ORF Size: 3411 bp

OTI Disclaimer: The molecular sequence of this clone aligns with the gene accession number as a point of reference only. However, individual transcript sequences of the same gene can differ through naturally occurring variations (e.g. polymorphisms), each with its own valid existence. This clone is substantially in agreement with the reference, but a complete review of all prevailing variants is recommended prior to use. [More info](#)

OTI Annotation:	This clone was engineered to express the complete ORF with an expression tag. Expression varies depending on the nature of the gene.
Components:	The ORF clone is ion-exchange column purified and shipped in a 2D barcoded Matrix tube containing 10ug of transfection-ready, dried plasmid DNA (reconstitute with 100 ul of water).
Reconstitution Method:	<ol style="list-style-type: none"> 1. Centrifuge at 5,000xg for 5min. 2. Carefully open the tube and add 100ul of sterile water to dissolve the DNA. 3. Close the tube and incubate for 10 minutes at room temperature. 4. Briefly vortex the tube and then do a quick spin (less than 5000xg) to concentrate the liquid at the bottom. 5. Store the suspended plasmid at -20°C. The DNA is stable for at least one year from date of shipping when stored at -20°C.
RefSeq:	<u>NM_213618.1, NP_998783.1</u>
RefSeq Size:	4371 bp
RefSeq ORF:	3414 bp
Locus ID:	6764
UniProt ID:	<u>P78524</u>
Cytogenetics:	11p15.4
Gene Summary:	This gene was identified by its ability to suppress the tumorigenicity of Hela cells in nude mice. The protein encoded by this gene contains a C-terminal region that shares similarity with the Rab 3 family of small GTP binding proteins. This protein preferentially binds to the SH3 domain of c-Abl kinase, and acts as a regulator of MAPK1/ERK2 kinase, which may contribute to its ability to reduce the tumorigenic phenotype in cells. Three alternatively spliced transcript variants of this gene encoding distinct isoforms are identified. [provided by RefSeq, Jul 2008]

Product images:



Circular map for RG206037