

Product datasheet for **RG206026**

NISCH (NM_007184) Human Tagged ORF Clone

Product data:

Product Type:	Expression Plasmids
Product Name:	NISCH (NM_007184) Human Tagged ORF Clone
Tag:	TurboGFP
Symbol:	NISCH
Synonyms:	hIRAS; I-1; IR1; IRAS
Mammalian Cell Selection:	Neomycin
Vector:	pCMV6-AC-GFP (PS100010)
E. coli Selection:	Ampicillin (100 ug/mL)
ORF Nucleotide Sequence:	>RG206026 representing NM_007184 Red=Cloning site Blue=ORF Green=Tags(s)

TTTTGTAATACGACTCACTATAGGGCGGCCGGAATTCGTCGACTGGATCCGGTACCGAGGAGATCTGCC
GCC**CGATCGCC**

ATGGCGACCGCGCACCTTCGGGCCGAGCGGGAAGCCGAGCCGGCCAAGGAAGCGCGCTCGTGGGCT
CGGAGCTTGTGGACACTTATACGGTTTACATCATCCAGGTCAGTATGGCAGCCATGAGTGGACAGTAAA
GCACCGCTACAGCGACTCCATGACCTGCATGAAAAGCTCGTTGCAGAGAGAAAGATTGATAAAAACTG
CTTCCGCCAAAAAGATAATTGGGAAAACTCAAGAAGCTTGGTGGAGAAGAGGGAGAAGGATCTGGAGG
TCTACCTCCAGAAGCTCCTGGCTGCCTTCCTGGCGTGACCCCAAGTACTGGCCCACTTCTTGCAATTT
TCACTTCTATGAGATAAATGGCATCACCGCGCACTGGCTGAAGAGCTCTTTGAGAAAGGAGAACAGCTC
CTGGGGGCCGGCGAGGTCTTTGCCATTGGACCCCTGCAGCTGTATGCCGTACGGAGCAGCTGCAGCAGG
GAAAGCCACGTGCGCCAGTGGGGATGCCAAGACCGACCTCGGGCACATCCTGGACTTCACTGTGCGCT
TAAGTACCTTAAGGTTTCTGGCACAGAAGGACCTTTTGGGACCAGCAACATTCAGGAGCAGCTCCTGCCG
TTCGACCTATCAATTTCAAGTCCCTGCATCAGGTGGAGATAAGTCACTGTGATGCTAAGCACATCAGAG
GGCTGGTCGCATCGAAGCCACCTTAGCCACGCTGAGTGTCCGCTTCTCAGCAACCTCGATGAAGGAAGT
CCTTGTTCCTGAAGCCTCAGAATTTGATGAGTGGGAGCCTGAAGGCACAACCCCTAGAAGGCCCTGTGACT
GCCGTATCCCCACTTGGCAGGCATTGACCACGCTTGACCTGAGCCACAACAGCATCTCCGAGATCGAGC
AGTCTGTGAAACTGATCCCAAAGATTGAGTTCCTGGACCTGAGTCACAATGGATTGCTGGTTGTGGACAA
TCTGCAGCACCTGTATAACCTTGTGCATCTGGACCTGTCCTACAACAAGCTCTCCTCCTTGAAGGGCTT
CACACCAAGCTGGGGAACATCAAGACCTTAAACCTGGCAGGCAACCTCCTAGAGAGTCTGAGTGGCCTGC
ACAAGCTTACTCACTGGTCAACCTGGATCTCCGGGACAACAGGATCGAACAGATGGAGGAGGTCCGGAG
CATAGGCAGCCTCCCGTGTCTGGAGCACGTGTCTCTGCTGAACAACCTCTGAGCATCATCCCCGACTAC
CGGACCAAGGTGCTGGCTCAGTTCGGAGAGAGGGCCTCAGAGGTCTGTCTGGATGACACAGTGACCACAG
AGAAGGAGCTGGACTGTGGAAGTGTGAAAGCAATTCAGAAAGCCAAGGAGGTCAAGTCCAAACTGAG
CAACCCAGAGAAGAAGGGTGGTGAAGACTCCCGCTCTCAGCTGCCCCCTGCATCAGACCCAGCAGCTCC



[View online >](#)

CCTCCACTGTGGCTCCCGCATCTGCCTCCCTGCCCCAGCCCATCCTCTCTAACCAAGGAATCATGTTCCG
 TTCAGGAGGAGGCCCTGGCCAGCAGCCTCTCGTCCACTGACAGTCTGACTCCCGAGCACCAGCCATTGC
 CCAGGGATGTTCTGATTCTTGGAGTCCATCCCTGCGGGACAGGCAGCTTCCGATGATTTAAGGGACGTG
 CCAGGAGCTGTTGGTGGTGAAGCCAGAACATGCCGAGCCGGAGGTCCAGGTGGTGCCGGGTCTGGCC
 AGATCATCTTCTGCCCTTACCTGCATTGGCTACACGGCCACCAATCAGGACTTCATCCAGCGCCTGAG
 CACACTGATCCGGCAGGCCATCGAGCGGCAGCTGCCTGCCTGGATCGAGGCTGCCAACAGCGGGAGGAG
 GGCCAGGTTGAACAGGGCGAGGAGGAGGATGAGGAGGAGGAAGAAGAGGAGGACGTGGCTGAGAACCCTG
 ACTTTGAAATGGGGCCCCAGACGTGGAGGAGGAGGAGGAGGAGGCCAGGGGGAGGAAGAGGAGGAGGA
 AGAGGAGGATGAAGAGGCCGAGGAGGAGCGCCTGGCTCTGGAATGGGCCCTGGGCGCGGACGAGGACTTC
 CTGCTGGAGCACATCCGCATCCTCAAGGTGCTGTGGTCTTCTGATCCATGTGCAGGGCAGTATCCGCC
 AGTTCCGCCCTGCCTTGTGCTCACCAGCTTCGGCATCGAGTCTTCGAGATCCCGCACCAGGAGTCTCG
 GGGCAGCAGCCAGCACATCCTCTCCTCCCTGCGCTTTGTCTTTTGTCTCCCGCATGGCGACCTCACCAG
 TTTGGCTTCTCATGCCGAGCTGTGTCTGGTGTCAAGGTACGGCACAGTGAGAACACGCTCTTCATTA
 TCTCGGACGCCCAACCTGCACGAGTTCACGCGGACCTGCGCTCATGCTTTGCACCCAGCACATGGC
 CATGCTGTGTAGCCCATCCTCTACGGCAGCCACACCAGCTGCAGGAGTTCCTGCGCCAGCTGCTCACC
 TTCTACAAGTGGCTGGCGGCTGCCAGGAGCGCAGCCAGGGCTGCTTCCCGTCTACCTGGTCTACAGTG
 ACAAGCGCATGGTGCAGACGGCCGCCGGGACTACTCAGGCAACATCGAGTGGGCCAGCTGCACACTCTG
 TTCAGCCGTGCGGCGCTCCTGCTGCGCGCCCTCTGAGGCCGTCAAGTCCGCCGCCATCCCCTACTGGCTG
 TTGCTCACGCCCCAGCACCTCAACGTATCAAGGCCGACTTCAACCCCATGCCAACCCGTGGCACCACACA
 ACTGTGCAACCGCAACAGCTTCAAGCTCAGCCGTGTGCCGCTCTCCACCGTGTCTGGACCCACACG
 CAGCTGTACCCAGCCTCGGGGCGCTTTGCTGATGGCCACGTGCTAGAGTGTCTCGTGGGGTACCGCTTT
 GTCAGTCCATCTTCGTGCTGCCCCACGAGAAGTCCACTTCTGCGCGTCTACAACCCAGCTCGGGCCCT
 CGCTGCAGGACCTGAAGACTGTGGTCAATCGCCAAAGACCCCGGGACGGGAGGCAGCCCCAGGGCTCCTT
 TGCGGATGGCCAGCCTGCGGAGCGCAGGGCCAGCAATGACCAGCGTCCCCAGGAGTCCCAGCAGAGGCT
 CTGGCCCCGCCCCAGCGGAAGTCCCAGCTCCAGCCCCTGCAGCAGCCTCAGCCTCAGGCCAGCGAAGA
 CTCCGGCCCCAGCAGAGGCCCTCAACTTCAGCTTTGGTCCCAGAGGAGACGCCAGTGAAGCTCCAGCCCC
 ACCCCCAGCCGAGGCCCTGCCAGTACCCGAGTGAACACCTCATCCAGGCCACCTCGGAGGAGAATCAG
 ATCCCCTCGCACTTGCTGCCTGCCGTCGCTCCGGCACGTGCCAGCCTGCGGGGACGCGCCATCATCG
 AGCTCTTCCACAGCAGCATTGCTGAGGTTGAAAACGAGGAGCTGAGGCACCTCATGTGGTCTCGGTGGT
 GTTCTACCAGACCCAGGGCTGGAGGTGACTGCCTGCGTGTCTCTCCACCAAGGCTGTGTACTTTGTG
 CTCACAGCAGGCCCTCCGCCGCTACTTCTCAGAGCCACTGCAGGATTTCTGGCATCAGAAAAACCCGACT
 ACAACAACAGCCCTTCCACATCTCCAGTGTTCGTGCTAAAGCTTAGTGACCTGCAGTCAATGT
 GGGGCTTTTCGACCAGCATTTCGGGCTGACGGGTTCCACCCCGATGCAGGTGGTACGTGCTTGACGCGG
 GACAGTACCTGACGCACTGCTTCTCCAGCACCTCATGGTCTGTCTCTCTGGAACGCACGCCCT
 CGCCGGAGCCTGTTGACAAGGACTTCTACTCCGAGTTTGGGAACAAGACCACAGGGAAGATGGAGAATA
 CGAGTGTACTTCTAGTCGCGTCAAGTTTACCTACCCAGTGAAGGAGGAGATTGGGGACCTGACGTTT
 ACTGTGGCCAAAAGATGGCTGAGCCAGAGAAGGCCCCAGCCCTCAGCATCCTGTGTACGTGCAGGCCCT
 TCCAGTGGGCATGCCACCCCTGGGTGCTGCAGGGGCCCTGCGCCCAAGACTCCTGCTCACCAG
 CTCCGAGATCTTCTCCTGGATGAGGACTGTGTCCACTACCCACTGCCCGAGTTTGCCAAAGAGCCGCG
 CAGAGAGACAGGTACCGGCTGGACGATGGCCGCCGCTCCGGGACCTGGACCGAGTGTCTATGGGCTACC
 AGACCTACCCGCAGGCCCTCACCCTCGTCTTCGATGACGTGCAAGGTGATGACCTCATGGCAGTGTAC
 CCTGGACCACTTTGGGAGGTGCCAGGTGGCCCGCTAGAGCCAGCCAGGGCCGTGAAGTCCAGTGGCAG
 GTGTTTGTCCCCAGTGTGAGAGCAGAGAGAAGCTCATCTCGCTGTTGGCTCGCCAGTGGGAGGCCCTGT
 GTGGCCGTGAGCTGCCTGTCGAGCTCACCGGC

ACGCGTACGCGGCCGCTCGAG - GFP Tag - GTTTAA

Protein Sequence: >RG206026 representing NM_007184
 Red=Cloning site Green=Tags(s)

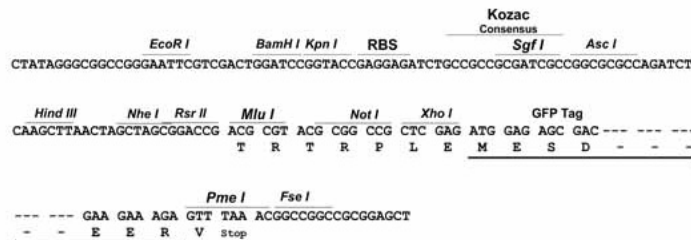
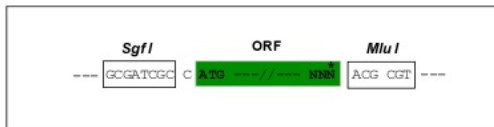
MATARTFGPEREAEPAAKEARVVGSELVDYTYVYIIQVTDGSHEWTVKHRYSDFHDLHEKLVAERKIDKNL
 LPPKKIIGKNSRSLVEKREKDLLEVYLQKLLAAFPVTPRVLAHFLHFHFYEINGITAALAEELFEKGEQL
 LGAGEVFAIGPLQLYAVTEQLQQKPTCASGDAKTDLGHILDFTCRLKYLKVSGETGPFGTSNIQEQLLP
 FDL SIFKSLHQVEISHCDAKHIRGLVASKPTLATLSVRF SATSMKEVLVPEASEFDEWEPEGTTLEGPVT
 AVIPTWQALTTLDL SHNSISEIDESVKLIPKIEFLDLSHGLLVVDNLQHLYNLVHLDLSYNKLSLEGL
 HTKLGNIKTLNLAGNLESLSGLHKL YSLVNLDLRDNRIEQMEEVRSIGSLPCLEHVSLNPLSIIPDY
 RTKVL AQFGERASEVCLDDTVTTEKELDTVEVLKAIQKAKEVKS KLSNPEKKGEDSRLSAAPCIRPSS
 PPTVAPASASLPQPILSNQGMFVQEEALASSLSSTDSL TPEHQPIAQGCSDSLESIPAGQAASDDL RDV
 PGAVGGASPEHAPEVQVVPVGSQIIFLPFTCIGYTATNQDFIQRLSTLIRQAIERQLPAWIEAANQREE
 GGQEQGEEDEEEEEEDVAENRYFEMGPPDVEEEE GGGQGE EEEEEEEDEEAEERLAL EWALGADEDF
 LLEHIRILKVLWCFLIHVQGSIRQFAACLVL TDFGI AVFEIPHQESRGSSQHILSSLRVFVCFPHGDLTE
 FGFLMPELCLVLKVRHSENTLFIISDAANLHEFHADLRSCFAPQHMAMLCSPILYGSHTSLQEFLRQLLT
 FYKVAGGCQERSQGCFPVYLVYSDKRMVQTAAGDYSGNIEWASCTLCSAVRRSCCAPSEAVKSAAI PWL
 LLTPQHNLVNIKADFNPMNPRGTHNCRNRNSFKLSRVPLSTVLLDPTRSC TQPRGAFADGHVLELLVG YRF
 VTAIFVLPHEKFHFLRVYNQLRASLQDLKTVVIAKTPGTGGSPQGSFADGQPAERRASNDQRQVEVPAEA
 LAPAPAEVPAPAPAAAASGPAKTPAPAEASTSALVPEETPVEAPAPPPAEAPAQY PSEHLIQATSEENQ
 IPSHL PACPSLRHVASLRGSAI IELFHSSIAEVENEELRHLMWSSVVFYQTPGLEVTACVLLSTKAVYFV
 LHDGLRRYFSEPLQDFWHQKNTDYNNSPFHSIQCFVLKLSDLQSVNVGLFDQHFRLTGSTPMQVVTCLTR
 DSYLTHCFLQHLMVVLSLERTPSPEPVDKDFYSEFGNKTGK MENYELIHSSRVKFTY PSEEEIGDLTF
 TVAQKMAEPEKAPALSILLYVQAFQVGMPPPGCCRGPLRPKTL LLLTSSEIFLLDEDCVHYPLPEFAKEPP
 QRDRYRLDDGRRVRDLDRVLMGYQTYPQALTLVFDVQGHDL MGSVTLDFHFGVPGGPARASQGREVQWQ
 VVPSAESREKLISLLARQWEALCGREL PVELTG

TRTRPLE - GFP Tag - V

Restriction Sites: SgfI-MluI

Cloning Scheme:

Cloning sites used for ORF Shutting:

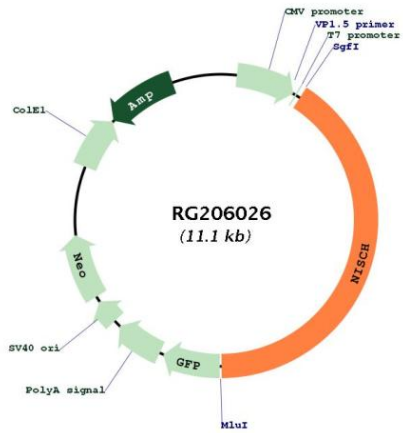


ACCN: NM_007184

ORF Size: 4512 bp

OTI Disclaimer:	The molecular sequence of this clone aligns with the gene accession number as a point of reference only. However, individual transcript sequences of the same gene can differ through naturally occurring variations (e.g. polymorphisms), each with its own valid existence. This clone is substantially in agreement with the reference, but a complete review of all prevailing variants is recommended prior to use. More info
OTI Annotation:	This clone was engineered to express the complete ORF with an expression tag. Expression varies depending on the nature of the gene.
Components:	The ORF clone is ion-exchange column purified and shipped in a 2D barcoded Matrix tube containing 10ug of transfection-ready, dried plasmid DNA (reconstitute with 100 ul of water).
Reconstitution Method:	<ol style="list-style-type: none">1. Centrifuge at 5,000xg for 5min.2. Carefully open the tube and add 100ul of sterile water to dissolve the DNA.3. Close the tube and incubate for 10 minutes at room temperature.4. Briefly vortex the tube and then do a quick spin (less than 5000xg) to concentrate the liquid at the bottom.5. Store the suspended plasmid at -20°C. The DNA is stable for at least one year from date of shipping when stored at -20°C.
RefSeq:	NM_007184.3
RefSeq Size:	5139 bp
RefSeq ORF:	4515 bp
Locus ID:	11188
UniProt ID:	Q9Y2I1
Cytogenetics:	3p21.1
Domains:	LRR, PX, LRR_SD22
Protein Families:	Druggable Genome
Gene Summary:	<p>This gene encodes a nonadrenergic imidazoline-1 receptor protein that localizes to the cytosol and anchors to the inner layer of the plasma membrane. The orthologous mouse protein has been shown to influence cytoskeletal organization and cell migration by binding to alpha-5-beta-1 integrin. In humans, this protein has been shown to bind to the adapter insulin receptor substrate 4 (IRS4) to mediate translocation of alpha-5 integrin from the cell membrane to endosomes. Expression of this protein was reduced in human breast cancers while its overexpression reduced tumor growth and metastasis; possibly by limiting the expression of alpha-5 integrin. In human cardiac tissue, this gene was found to affect cell growth and death while in neural tissue it affected neuronal growth and differentiation. Alternative splicing results in multiple transcript variants encoding different isoforms. Some isoforms lack the expected C-terminal domains of a functional imidazoline receptor. [provided by RefSeq, Jan 2013]</p>

Product images:



Circular map for RG206026