

Product datasheet for **RG206014**

MTMR9 (NM_015458) Human Tagged ORF Clone

Product data:

Product Type:	Expression Plasmids
Product Name:	MTMR9 (NM_015458) Human Tagged ORF Clone
Tag:	TurboGFP
Symbol:	MTMR9
Synonyms:	C8orf9; LIP-STYX; MTMR8
Mammalian Cell Selection:	Neomycin
Vector:	pCMV6-AC-GFP (PS100010)
E. coli Selection:	Ampicillin (100 ug/mL)



[View online »](#)

ORF Nucleotide Sequence:

>RG206014 representing NM_015458
 Red=Cloning site Blue=ORF Green=Tags(s)

TTTTGTAATACGACTCACTATAGGGCGGCCGGGAATTCGTCGACTGGATCCGGTACCGAGGAGATCTGCC
 GCC**CGCATCGCC**

ATGGAGTTTTCGGAGCTGATTAAGACCCCGCGGTGGACAATGTGGTGTGCACCGCCTTCTACCCGG
 CTGTGAGGGCACCTGTGCCTGACGGGCCACCACTTGATCCTGTCTCCCGGCAGGACAATACGGAGGA
 GCTGTGGCTCCTCCATTCAAACATCGACGCCATCGACAAGCGATTTGTAGGATCACTGGGTACCATCATC
 ATAAAAATGAAAGATTTTCGAATTATTCAGTTGGATATTCCTGGAATGGAGGAATGCTTGAATATAGCCA
 GTTCCATTGAGGCATTGTCTACTCTGGACTCCACTCTGATGTACCTTTCTTTTACCCTCTATGTT
 TGAAGTGATAGAAGATGGCTGGCATTCTTCTCTCTGAGCAAGAATTTGAACTCTATTCTTCAGCTACC
 AGTGAATGGAGGTAAGCTATGTCAATAAGGAATTTGCTGTCTGTCCCTTACCACCAATTGTCACAG
 TGCCCAAATCCATCGATGATGAAGCTCTCGGAAGGTAGCTACATTTGACATGGAGGGCGCTTCCCAGT
 ACTAAGCTATTACCACAAAAAATGGGATGGTAATTATGCGAAGTGGTCAGCCACTCACTGGTACAAC
 GGGAGGAGGTGCAAGGAGGACGAGAAGCTGATAAATGCTACCCTCAGGGCTGAAAAGCGTGGCTACATCA
 TTGACACCCGATCCCTGAACGTGGCTCAGCAAAGTACAGCCAAAGGAGGTGGCTTTGAACAAGAAGCTCA
 TTATCCTCAGTGGAGGCGAATTCATAAGTCCATTGAGAGGTATCACATTCTCAGGAGAGCTTAATCAAA
 CTTGTGGAAGCTTGAATGACCAAACACATAACATGGACCGATGGCTCAGTAAATGGAGGCCTCTAACT
 GGCTGACTCACATCAAAGAGATTCTGACAACTGCCTGCCTAGCGGCTCAGTGCATCGACAGGGAAGGAGC
 ATCAATATTGATTCACGGAACAGAAGGAAGTATCCACACTCCAGGTGACCTCCTTGGCCAGATCATC
 TTAGAGCCAAGAAGCAGGACCATTCTGGTGGTTTGGAGCCCTGATTGAAAGAGAGTGGCTGCAGGCTGGTC
 ACCCATCCAGCAGCGCTGTGCACAGTCAGCCTACTGTAACACCAAGCAGAAGTGGGAGGCTCCTGTATT
 TCTTCTCTTCTGGACTGCGTGTGGCAGATCCTTCGTGATTTCCCTGTTCTTTTGGAGTTAATGAGAAT
 TTCTCATCATGCTCTTTGAGCATGCTTATGCCTCACAGTTTGGAACTTTCTGGCAACAAATGAAAGTG
 AAAGATGTAAGTTGAAGCTACAGCAGAAGACGATGCTTTGTGGTCTGGGTTAATCAGCCAGTGAAGT
 GAGTAAATTCACCAATCCCCTCTTTGAAGCCAACAACCTTGTCATCTGGCCTTCAGTTGCTCCGAGAGT
 CTTCCACTGTGGGAAGGTATTTCTACGTTGGAATAGATCCTCTAAGTATTTGGATGAAGCATATGAAG
 AAATGGTTAACATCATTGAATATAATAAAGAATTACAAGCAAAGTCAATATCCTTCGAAGGCAGTTGGC
 AGAACTGGAACAGAGGACGGGATGCAGGAGAGTCCC

ACGCGTACGCGGCCGCTCGAG - GFP Tag - GTTTAA

Protein Sequence:

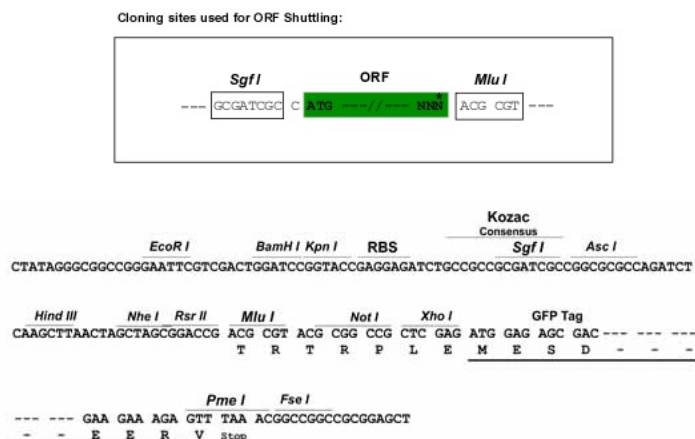
>RG206014 representing NM_015458
 Red=Cloning site Green=Tags(s)

MEFAELIKTPRVDNVVLRPFYPAVEGTLCLTGHHLILSSRDNTEELWLLHSNIDAIDKRFVGLGTII
 IKCKDFRIIQLDIPGMEELNIASSIEALSTLDSITLMPFFYRPMFEVIEDGWHSFLPEQEFELYSSAT
 SEWRLSYVNFYAVCPSPYPIVTPKSIDDEALRKVATFRHGGFRPVLSSYHKKNGMVMIRSGQPLTGTN
 GRRCKEDEKLINATLRAGKRGYIIDTRSLNVAQQTRAKGGGFEQEAHYQPWRRIHKSIERYHILQESLIK
 LVEACNDQTHNMDRWLSKLEASNWLTHIKEILTTACLAQCIDREGASILIHGTEGTDSTLQVTSLAQII
 LEPRSRTIRGFELIEREWLQAGHPFQQRCAQSAYCNTKQKWEAPVLLFLDCVWQILRQFPCSEFNEN
 FLIMLFEHAYASQFGTFLGNSESERCKLKLQKTMWSLWSWVNPSELKFTNPLFEANLVIWPSVAPQS
 LPLWEGIFLRWNRSSKYLDEAYEEMVNIIEYNKELQAKVNILRRQLAELETEDGMQESP

TRTRPLE - GFP Tag - V

Restriction Sites:

Sgfl-MluI

Cloning Scheme:


ACCN: NM_015458

ORF Size: 1647 bp

OTI Disclaimer: The molecular sequence of this clone aligns with the gene accession number as a point of reference only. However, individual transcript sequences of the same gene can differ through naturally occurring variations (e.g. polymorphisms), each with its own valid existence. This clone is substantially in agreement with the reference, but a complete review of all prevailing variants is recommended prior to use. [More info](#)

OTI Annotation: This clone was engineered to express the complete ORF with an expression tag. Expression varies depending on the nature of the gene.

Components: The ORF clone is ion-exchange column purified and shipped in a 2D barcoded Matrix tube containing 10ug of transfection-ready, dried plasmid DNA (reconstitute with 100 ul of water).

Reconstitution Method:

1. Centrifuge at 5,000xg for 5min.
2. Carefully open the tube and add 100ul of sterile water to dissolve the DNA.
3. Close the tube and incubate for 10 minutes at room temperature.
4. Briefly vortex the tube and then do a quick spin (less than 5000xg) to concentrate the liquid at the bottom.
5. Store the suspended plasmid at -20°C. The DNA is stable for at least one year from date of shipping when stored at -20°C.

RefSeq: [NM_015458.4](#)

RefSeq Size: 7421 bp

RefSeq ORF: 1650 bp

Locus ID: 66036

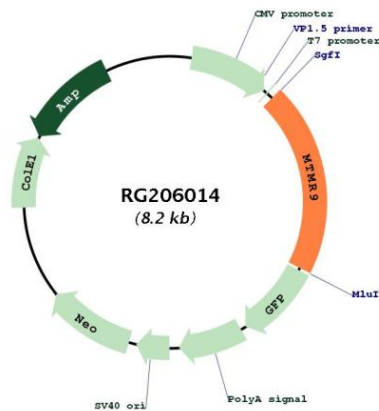
UniProt ID: [Q96QG7](#)

Cytogenetics: 8p23.1

Protein Families: Druggable Genome, Phosphatase

Gene Summary: This gene encodes a myotubularin-related protein that is atypical to most other members of the myotubularin-related protein family because it has no dual-specificity phosphatase domain. The encoded protein contains a double-helical motif similar to the SET interaction domain, which is thought to have a role in the control of cell proliferation. In mouse, a protein similar to the encoded protein binds with MTMR7, and together they dephosphorylate phosphatidylinositol 3-phosphate and inositol 1,3-bisphosphate. [provided by RefSeq, Jul 2008]

Product images:



Circular map for RG206014