

Product datasheet for **RG205989**

GSTCD (NM_001031720) Human Tagged ORF Clone

Product data:

Product Type:	Expression Plasmids
Product Name:	GSTCD (NM_001031720) Human Tagged ORF Clone
Tag:	TurboGFP
Symbol:	GSTCD
Mammalian Cell Selection:	Neomycin
Vector:	pCMV6-AC-GFP (PS100010)
E. coli Selection:	Ampicillin (100 ug/mL)



[View online »](#)

ORF Nucleotide Sequence:

>RG205989 representing NM_001031720
 Red=Cloning site Blue=ORF Green=Tags(s)

TTTTGTAATACGACTCACTATAGGGCGGCCGGAATTCGTCGACTGGATCCGGTACCGAGGAGATCTGCC
 GCC**CGGATCGCC**

ATGAAAGCCATAAAGAAAAGTCTTACAGAAGAAGAATACCTGTACCTGGACTTTTCTCACCAACAGAAG
 GATGCATCTTTCCTTTCATACATCTGTAACCTTTATTTCTGTTATCTTACTGTGACTGTAAAATCTTTAA
 AATTTGCTTAGTTGTCACCAAAGAGGTGAGTAGAGATAGTTCACTACTAAGAGATGACCTGATCCAGGAT
 GTTGAAATACAGATTATTTCAAGGCAGGAGCTCCACCAATAGTCCAAAATTGCTGTTTGCCTGCAGTAG
 TAGAACGATCAGACAATTTTGTAGAGCAGGACTTGTGTTGATTGAGACACATAATCCAGAAATCCTA
 TGAAGCAGACCCCTTAAGAAGGAACCTTTGGAACCTCTGGGCTTTAAAAAGACTTGCTTGAAGCCTGT
 GCTGAAGTTAGTCAGTGGACCAGGCTATGTGAACCTACCATCCCTTTGGCTATTGAGAATTTCTCAGAG
 AATCTTCTGACCAGCCCAACTATACCTGTAGAATACTACAGCTAGAGAAAAAGCTTAGTGAGCCTGT
 TAGAGTGCATAATGATGATAAACTCCGCAGGCAGAAGCTCAAGCAACAGAAGGCTGATGGAGTTGGCCCT
 CCCCTTACTAAGGAAAGGCAAAGAGCAAGGTCCACACAGGAAACATCTGAAGGGTTGGATTCTTCAT
 CCAAGAGTCTGGAAGTGAAGTGGCATTCTCAAAGCTCACAGTACAGGAAGAACCAGCTACTACCAACAG
 AGAGCCTTCTCACATCAGAAAAGCAAAGCCTCCGACCTTCCACCTCTGGAGCATGTGTTGCAGAAGGG
 CTTTACTTCACTCTGGCAGATATTGTGCTTGGCCTGTATCCATCATTCTTGGTAATTATCAGCAGGA
 AATTTTCTGAGAAGCTGGTAGAATTTCCATTGCTAGCCTCTTGGTACCAGAGGATTCAGGAAGTGCCAGG
 AGTAAAAACAGCTTCTAAGTGTGGGATCCAATTTCTCCATTTACCAAAGTGTGACAACCTCAACTGAA
 CAGCATCCAACTTATGTGAAGTCCCAGGTGTAGAAGAGCAAAGCGATCCTTTATTTATAGGAGGACCAA
 GACCAACCATGGCCAAGTTAATGGAAGGGCATTGAAGTGATTTTTCTCCACCCCTTGGCCTACTTG
 GACTCTTGATTGGAATGTTCTCCCTGCAGCAGTACGCCAAAGGAAGGTAATAATGTCCAGTGATCGAGCT
 TTGAGGAAGCAGCAACAGTTGAACAACCTTGTCTATGTGGTAACAAATCAGGCCAAACCTGGTGACAGAA
 TTGTGGATTTCTGCAGCGGTGGGGCCATGTTGGAATTGTCTTGTCTCACATGCTGCCATCATGTGAGGT
 TACATTAATAGAAAACAAGGAATTATCATTAAATTCGTGCTAAGAAGAGAAGTGATGAAGTGGGTTAAGC
 AACATTTGGTTCATTCAAGCAAATATGGAATATTTTACTGGGATGTTAATATTGGAGTAGCATTGCATG
 CTTGTGGAGTGGCAACAGACATGGTATTGAGCACTGTATCAAAACACGGGCTTCCCTTCTGCATGCCCC
 TTGCTGTTATGGTTTCATTCCAGAACACCTCAAAGTTCAATTTCCAAAAAGTGAACAATCAAGAAAAT
 TTATCATACAAGGAACACATGATTCTGTGCAGATTTGCAGACCAGACAGCTGTCCAGCTCCACCCCAAC
 GAAGGCTCATAGGAAAACAGTGCATGTGCTTGGTGGATCTGGATCGAGCAAGAGCTGCAGAGAATGTGG
 ATACTCCGTTCAAGTGATATCCATGGAGCCAGAGAGCTGCTCTCCAAAAATAACATGATTGTGGGAGTC
 CCCATT

ACGCGTACGCGGCCGCTCGAG - GFP Tag - GTTTAA

Protein Sequence:

>RG205989 representing NM_001031720
 Red=Cloning site Green=Tags(s)

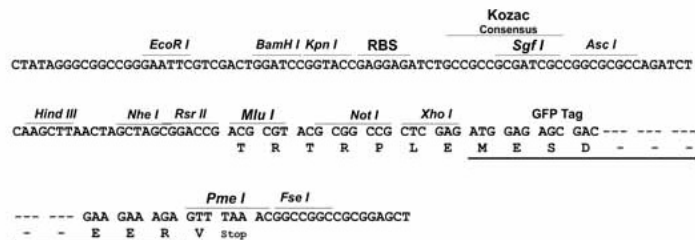
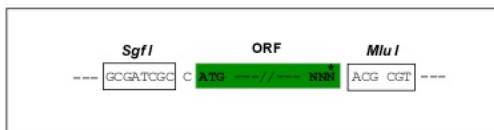
MKAIKKSLTEEEYLDFSHQTEGCIPLHTSVTLFLLSYCDCKIFKICLVVTKVEVSRDSSLLRDDLIDQ
 VEIQIISRQELPPIVQNCCLPAVVERSDNFCRAGLAVVLRHIIQKSYEADPLKKELELLGFKKTKLKAC
 AEVSQWTRLCELTIPLA IENFLRESSDQPTIPVEILQLEKKLSEPVRVHNDKLRQKQKQKADGVGP
 PLTKGKAKSKVHTQETSEGLDSSSKSLELKVAFSKLTVQEEPATNREPSHIRKAKASDLPPLEHVFAEG
 LYFTLADIVLLPCIHHFLVII SRKFSEKLVEFLLASWYQRIQEVPVKTASKCGIQFLHLPKLLTTSTE
 QHPNLCEVPGVEEQSDPLFIGGPRPTMAKLMEKGIEVMFSPHPCPTWTL DWNVLPAAVSPKEGKMSSDRA
 LRKQQLNNLVYVVTNQAKPGDRIVDFCSGGHVGIVLAHMLPSCQVTL IENKELSLIRAKKRSDELGLS
 NIWFIQANMEYFTGMFNIGVALHACGVATDMVIEHCIKTRASFVTCPCCYGFIQNTSKFNFPKSEQFKKT
 LSYKEHMILCRFADQTA VQLPPQRRLLIGKQCMCLVDLDRARAAEECGYSVQVISMEPESCSPKNNMIVG
 PI

TRTRPLE - GFP Tag - V

Restriction Sites: SgfI-MluI

Cloning Scheme:

Cloning sites used for ORF Shutting:



ACCN: NM_001031720

ORF Size: 1896 bp

OTI Disclaimer: The molecular sequence of this clone aligns with the gene accession number as a point of reference only. However, individual transcript sequences of the same gene can differ through naturally occurring variations (e.g. polymorphisms), each with its own valid existence. This clone is substantially in agreement with the reference, but a complete review of all prevailing variants is recommended prior to use. [More info](#)

OTI Annotation: This clone was engineered to express the complete ORF with an expression tag. Expression varies depending on the nature of the gene.

Components: The ORF clone is ion-exchange column purified and shipped in a 2D barcoded Matrix tube containing 10ug of transfection-ready, dried plasmid DNA (reconstitute with 100 ul of water).

Reconstitution Method:

1. Centrifuge at 5,000xg for 5min.
2. Carefully open the tube and add 100ul of sterile water to dissolve the DNA.
3. Close the tube and incubate for 10 minutes at room temperature.
4. Briefly vortex the tube and then do a quick spin (less than 5000xg) to concentrate the liquid at the bottom.
5. Store the suspended plasmid at -20°C. The DNA is stable for at least one year from date of shipping when stored at -20°C.

RefSeq: [NM_001031720.1](#), [NP_001026890.1](#)

RefSeq Size: 2164 bp

RefSeq ORF: 1902 bp

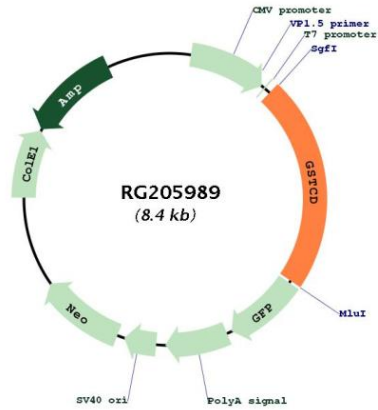
Locus ID: 79807

UniProt ID: [Q8NEC7](#)

Cytogenetics: 4q24

Protein Families: Druggable Genome

Product images:



Circular map for RG205989