

Product datasheet for **RG205970**

TTLL2 (NM_031949) Human Tagged ORF Clone

Product data:

| | |
|---------------------------|--|
| Product Type: | Expression Plasmids |
| Product Name: | TTLL2 (NM_031949) Human Tagged ORF Clone |
| Tag: | TurboGFP |
| Symbol: | TTLL2 |
| Synonyms: | C6orf104; dj366N23.3; NYD-TSPG |
| Mammalian Cell Selection: | Neomycin |
| Vector: | pCMV6-AC-GFP (PS100010) |
| E. coli Selection: | Ampicillin (100 ug/mL) |



[View online »](#)

ORF Nucleotide Sequence:

>RG205970 representing NM_031949
 Red=Cloning site Blue=ORF Green=Tags(s)

TTTTGTAATACGACTCACTATAGGGCGGCCGGGAATTCGTCGACTGGATCCGGTACCGAGGAGATCTGCC
 GCC**CGGATCGC**C

ATGAGAGGGCGGGACCTGTGTTCTCCACACAAAGCCAGGCGCTGGGATCTTTGAGAACCACCACCCAG
 CCTTTACCCTTAACATTCCATCCGAGGCAAACCACTGAGCAGCCGCTGCAGGCCTGGGAGCAAGGCT
 ACAGGAAGCAGGTGTTTCCATCCCTCCCAGGCGAGGCCGCCAACCAACACTGGAGAAGAAGAAAAA
 CCTCATTTGATGGCGGAAGATGAACCTTCAGGGCCCTCTTGAAGCCGCTGGTTTTTCGCGTTGACGAGA
 CCACCCCGGCTGTGGTCAAAGCGTCCTCTGGAGAGGGGTGGAATAAGTTTGATAAGCAGGAGCAGAA
 CGCGGAGGACTGGAACCTGTACTGGAGGACATCCTCTTCCGAATGACCGAACACAACAGTGTTAAACCG
 TGGCAGCAGCTAAACCACCACCTGGAACCACCAAGCTTACCAGGAAAGACTGTTTGGCCAAACACCTGA
 AGCACATGAGGAGGATGTATGGCACTTCCCTGTACCAGTTCATCCCCCTGACGTTCTGTCATGCCAATGA
 CTATACCAAGTTCTGGCTGAATACTTTAGGAGAGGCAGATGCTGGGCACCAAGCATAGCTATTGGATT
 TGCAAGCCTGCTGAGTTATCTCGTGGGAGGGGATACTAATTTTCACTGACTTTAAAGACTTCATCTTTG
 ATGATATGTACATAGTGAGAAATATATCTCCAATCCTTTACTTATTGGCAGATATAAATGTGATCTCCG
 CATCTATGTTTGTGTTACTGGCTTTAAGCCTTTGACCATTTATGTTTATCAGGAAGGGTTGGTTCGGTTT
 GCCACGGAAAAGTTTGACCTCAGTAATTTGCAAAACAATTATGCCATTTGACCAACAGCAGCATCAATA
 AATCCGGGGCCTCTTATGAGAAGATCAAAGAAGTGATTGGTCATGGTTGTAATGGACGCTCAGCAGATT
 TTTTCTACCTTCGTAGCTGGGATGTGGACGATCTGCTTTTGTGAAGAAAAATCCACCGCATGGTTATT
 CTCACCATCTCGCCATTGCACCATCTGCCCCCTTGTGCCAATTGCTTTGAGCTCTTTGGGTTTGATA
 TTTTGATTGACAACCTTGAAACCATGGCTTTTAGAGGTCAACTACAGCCAGCCTTGACCTTGGATTG
 TTCAACAGATGTGTTGGTGAAGAGAAAACCTTGTCCATGATATTATTGACCTGATTTACTTAAATGGTCTA
 AGAAATGAGGGGAGAGAAGCCAGTAATGCCACACATGGAATTCACATCGACGCTGCAAAAAGTGACA
 GAGGTGGGCTTGATGCTCCTGACTGTCTTCTTATGATTCTCTTCGTTCAACAGCAGATGTACAACGA
 GGATGACTCTGTGGTGGAGAAAGCTGTGAGTGTGCGTCTGAAGCTGCACCTGCCTCCAGCTGGAAGGA
 GAGATGAGTGGGAGGATTTTCTCTGTCAACAAGGAGATGCCACAAAGCAAGCCCAAGTTACGGAGCA
 GGCACACGCCTCACAAGACACTCATGCCCTACGCGTCCCTCTCCAGTCGCACTCCTGCAAGACCAAGAC
 CTCCCCGTGTCTCTGTGAGCCGTGGCAAAGCTCCAGATCCCCAAGCAGGCAACTTTGTTCTGTTTTT
 CCTTTCAATGAAGCAACTCTCGGAGCTTCCAGGAATGGATTAAATGTCAAAGAATAATCCAAGAGCTCC
 AGAAACTAATGAATAAGCAACATTCC

AG**CGGACCG**ACGCGTACGCGGCCGCTCGAG – GFP Tag – GTTTAA

Protein Sequence:

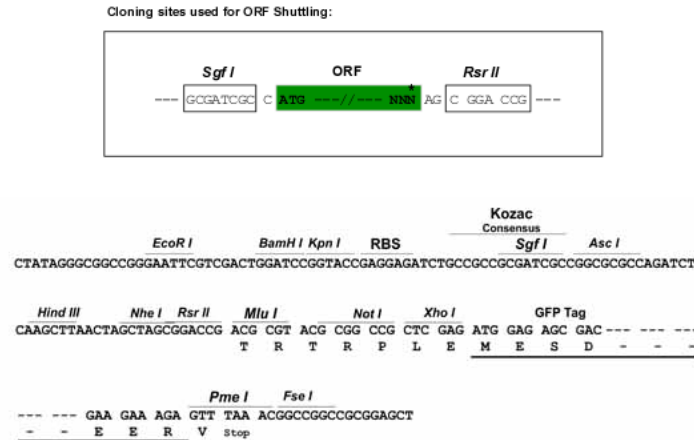
>RG205970 representing NM_031949
 Red=Cloning site Green=Tags(s)

MRGRDLCSSSTQSQUALGSLRTTTPAFTLNIPSEANHTEQPPAGLGARLQEAGVSIIPRRGRPTPTLEKKKK
 PHLMAEDEPSGALLKPLVFRVDETTTAVVQSVLLERGWKFDKQEQAEDWNLYWRTSSFRMTEHNSVKP
 WQQLNHHPGTTKLTRKDLAKHLKHMRMYGTSLYQFIPLTFVMPNDYTKFVAEYFQERQMLGTHSYWI
 CKPAELSRGRGILIFSDFKDFIFDDMYIVQKYISNPLLIIGRYKCDLRIYVCVTGFKPLTIYVYQEGLVRF
 ATEKFDLSNLQNNYAHLTNSSINKSGASYEKIKEVIGHGCKWTLRFFSYLRSWDVDDLLLWKIHRMVI
 LILAIAPSVFPAANCFELFGFDILIDNLPWLLEVNYSPTLDCSTDVLRKRLVHDIIDL IYLNGL
 RNEGREASNATHGNSNIDAAKSDRGGLDAPDCLPYDSLFTSRMYNEDDSVVEKAVSVRPEAAPASQLEG
 EMGGQDFHLSTREMPQSKPKLSRHTPHKTLMPYASLFQSHSCKTKTSPCVLSDRGKAPDPQAGNFVLVF
 PFNEATLGASRNLNVKRIIQELQKLMNKQHS

SGPTRTRRLE – GFP Tag – V

Restriction Sites:

SgfI-RsrII

Cloning Scheme:


ACCN: NM_031949

ORF Size: 1776 bp

OTI Disclaimer: Due to the inherent nature of this plasmid, standard methods to replicate additional amounts of DNA in E. coli are highly likely to result in mutations and/or rearrangements. Therefore, OriGene does not guarantee the capability to replicate this plasmid DNA. Additional amounts of DNA can be purchased from OriGene with batch-specific, full-sequence verification at a reduced cost. Please contact our customer care team at custsupport@origene.com or by calling 301.340.3188 option 3 for pricing and delivery.

The molecular sequence of this clone aligns with the gene accession number as a point of reference only. However, individual transcript sequences of the same gene can differ through naturally occurring variations (e.g. polymorphisms), each with its own valid existence. This clone is substantially in agreement with the reference, but a complete review of all prevailing variants is recommended prior to use. [More info](#)

OTI Annotation: This clone was engineered to express the complete ORF with an expression tag. Expression varies depending on the nature of the gene.

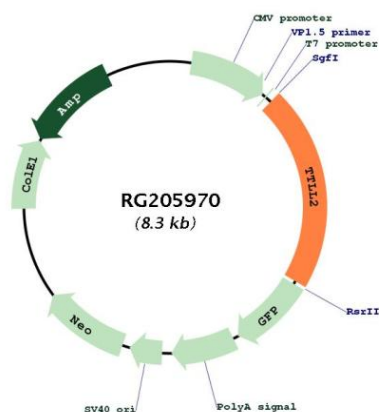
Components: The ORF clone is ion-exchange column purified and shipped in a 2D barcoded Matrix tube containing 10ug of transfection-ready, dried plasmid DNA (reconstitute with 100 ul of water).

Reconstitution Method:

1. Centrifuge at 5,000xg for 5min.
2. Carefully open the tube and add 100ul of sterile water to dissolve the DNA.
3. Close the tube and incubate for 10 minutes at room temperature.
4. Briefly vortex the tube and then do a quick spin (less than 5000xg) to concentrate the liquid at the bottom.
5. Store the suspended plasmid at -20°C. The DNA is stable for at least one year from date of shipping when stored at -20°C.

| | |
|---------------|--|
| RefSeq: | <u>NM_031949.5</u> |
| RefSeq Size: | 2877 bp |
| RefSeq ORF: | 1779 bp |
| Locus ID: | 83887 |
| UniProt ID: | <u>Q9BWV7</u> |
| Cytogenetics: | 6q27 |
| Gene Summary: | Probable tubulin polyglutamylase that forms polyglutamate side chains on tubulin. Probably acts when complexed with other proteins (By similarity).[UniProtKB/Swiss-Prot Function] |

Product images:



Circular map for RG205970