

Product datasheet for **RG205934**

Transmembrane 4 L6 family member 1 (TM4SF1) (NM_014220) Human Tagged ORF Clone

Product data:

Product Type:	Expression Plasmids
Product Name:	Transmembrane 4 L6 family member 1 (TM4SF1) (NM_014220) Human Tagged ORF Clone
Tag:	TurboGFP
Symbol:	Transmembrane 4 L6 family member 1
Synonyms:	H-L6; L6; M3S1; TAAL6
Mammalian Cell Selection:	Neomycin
Vector:	pCMV6-AC-GFP (PS100010)
E. coli Selection:	Ampicillin (100 ug/mL)
ORF Nucleotide Sequence:	>RG205934 representing NM_014220 Red=Cloning site Blue=ORF Green=Tags(s)

TTTTGTAATACGACTCACTATAGGGCGGCCGGAATTCGTCGACTGGATCCGGTACCGAGGAGATCTGCC
GCC**CGATCGCC**

ATGTGCTATGGGAAGTGTGCACGATGCATCGGACATTCTCTGGTGGGCTCGCCCTCCTGTGCATCGCGG
CTAATATTTTGTCTTACTTTCCCAATGGGGAAACAAAGTATGCCTCCGAAAACCACCTCAGCCGCTTCGT
GTGGTTCTTTTCTGGCATCGTAGGAGGTGGCTGCTGATGCTCCTGCCAGCATTGTCTTCATTGGGCTG
GAACAGGATGACTGCTGTGGCTGCTGTGGCCATGAAAACGTGGCAAACGATGTGCGATGCTTTCTCTG
TATTGGCTGCTCTCATTGGAATTGCAGGATCTGGCTACTGTGTCATTGTGGCAGCCCTTGGCTTAGCAGA
AGGACCACTATGTCTTGATTCCCTCGGCCAGTGGAACTACACCTTTGCCAGCACCGAGGGCCAGTACCTT
CTGGATACCTCCACATGGTCCGAGTGCCTGAACCAAGCACATTGTGGAATGGAATGTATCTCTGTTTT
CTATCCTCTTGGCTCTTGGTGAATTGAATTCATCTTGTGCTTATTCAAGTAATAAATGGAGTGCTTGG
AGGCATATGTGGCTTTTGTGCTCTACCAACAGCAAATGACTGCTAAAAGAACCAACCCAGGACAGAGC
CACAATCTTCTCTATTTTATTGTAATTTATATATTTCACTTGTATTCAATTTGTAACCTTTGTAT

ACGCGTACGCGGCCGCTCGAG - GFP Tag - GTTTAA



[View online »](#)

Protein Sequence: >RG205934 representing NM_014220
Red=Cloning site Green=Tags(s)

MCYGKCARCIGHSLVGLALLCIAANILLYFPNGETKYASENHLSRFVWFFSGIVGGGLMLLPAFVFIGL
 EQDDCCGCCGHENCGKRCAMLSSVLAALIGIAGSGYCVIVAALGLAEGPLCLDSLQWNYTFASTEGOYL
 LDTSTWSECTEPKHIVEWNVSLFSILLALGGIEFILCLIQVINGVLGGICGFCSSHQQQMTAKRTNPGQS
 HNLPLFHCNLYISLVFICKTLY

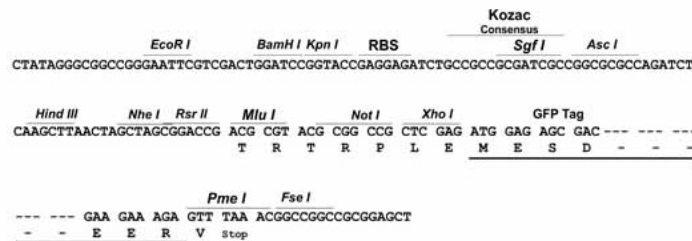
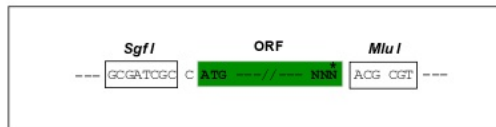
TRTRPLE - GFP Tag - V

Chromatograms: https://cdn.origene.com/chromatograms/ja2225_d08.zip

Restriction Sites: SgfI-MluI

Cloning Scheme:

Cloning sites used for ORF Shuttling:



ACCN: NM_014220

ORF Size: 696 bp

OTI Disclaimer: Due to the inherent nature of this plasmid, standard methods to replicate additional amounts of DNA in E. coli are highly likely to result in mutations and/or rearrangements. Therefore, OriGene does not guarantee the capability to replicate this plasmid DNA. Additional amounts of DNA can be purchased from OriGene with batch-specific, full-sequence verification at a reduced cost. Please contact our customer care team at custsupport@origene.com or by calling 301.340.3188 option 3 for pricing and delivery.

The molecular sequence of this clone aligns with the gene accession number as a point of reference only. However, individual transcript sequences of the same gene can differ through naturally occurring variations (e.g. polymorphisms), each with its own valid existence. This clone is substantially in agreement with the reference, but a complete review of all prevailing variants is recommended prior to use. [More info](#)

OTI Annotation: This clone was engineered to express the complete ORF with an expression tag. Expression varies depending on the nature of the gene.

- Components:** The ORF clone is ion-exchange column purified and shipped in a 2D barcoded Matrix tube containing 10ug of transfection-ready, dried plasmid DNA (reconstitute with 100 ul of water).
- Reconstitution Method:**
1. Centrifuge at 5,000xg for 5min.
 2. Carefully open the tube and add 100ul of sterile water to dissolve the DNA.
 3. Close the tube and incubate for 10 minutes at room temperature.
 4. Briefly vortex the tube and then do a quick spin (less than 5000xg) to concentrate the liquid at the bottom.
 5. Store the suspended plasmid at -20°C. The DNA is stable for at least one year from date of shipping when stored at -20°C.
- RefSeq:** [NM_014220.2](#), [NP_055035.1](#)
- RefSeq Size:** 1712 bp
- RefSeq ORF:** 609 bp
- Locus ID:** 4071
- UniProt ID:** [P30408](#)
- Cytogenetics:** 3q25.1
- Protein Families:** Transmembrane
- Gene Summary:** The protein encoded by this gene is a member of the transmembrane 4 superfamily, also known as the tetraspanin family. Most of these members are cell-surface proteins that are characterized by the presence of four hydrophobic domains. The proteins mediate signal transduction events that play a role in the regulation of cell development, activation, growth and motility. This encoded protein is a cell surface antigen and is highly expressed in different carcinomas. [provided by RefSeq, Jul 2008]

Product images:



Circular map for RG205934