

Product datasheet for **RG205908**

CIDE B (CIDEB) (NM_014430) Human Tagged ORF Clone

Product data:

Product Type: Expression Plasmids
Product Name: CIDE B (CIDEB) (NM_014430) Human Tagged ORF Clone
Tag: TurboGFP
Symbol: CIDE B
Mammalian Cell Selection: Neomycin
Vector: pCMV6-AC-GFP (PS100010)
E. coli Selection: Ampicillin (100 ug/mL)
ORF Nucleotide Sequence: >RG205908 representing NM_014430
 Red=Cloning site Blue=ORF Green=Tags(s)

TTTTGTAATACGACTCACTATAGGGCGGCCGGAATTCGTCGACTGGATCCGGTACCGAGGAGATCTGCC
 GCC**CGATCGCC**

ATGGAGTACCTCTCAGCTCTGAACCCAGTGACTTACTCAGGTCAGTATCTAATAAAGCTCGGAGTTTG
 GACGGAGGGTCTGGACCTCAGCTCCACCACCCAGCGACCTTCCGTGTCTGTGATCACAAAGCGGACCAT
 CCGGAAAGGCCTGACAGCTGCCACCCGCCAGGAGCTGTAGCCAAAGCATTGGAGACCCTACTGTGAAT
 GGAGTCTAACCTGGTCTAGAGGAGGATGGAAGTGCAGTGGACAGTGGAGACTTCTCCAGCTGCTGG
 AGGATGACACGTGCCTGATGGTGTTCAGTCTGGTCAGAGCTGGAGCCCTACAAGGAGTGGAGTGTCTGC
 ATATGGCCTGGGACGGGAGGCCCAAGCACAGCAAGGACATCGCCCGATTACCTTTGACGTGTACAAG
 CAAAACCTCGAGACCTCTTTGGCAGCCTGAATGTCAAAGCCACATTCTACGGGCTCTACTCTATGAGTT
 GTGACTTTCAAGGACTTGGCCAAAGAAAGTACTCAGGGAGCTCCTTCGTTGGACCTCCACACTGCTGCA
 AGGCCTGGCCATATGTTGCTGGGAATTCCTCCACCCTCGTCATGCAGTGGAGGGGGCTGAGCAGTGG
 CAGCAGAAGGGCCGCTCCATTCCTAC

ACGCGTACGCGGCCGCTCGAG - GFP Tag - GTTTAA

Protein Sequence: >RG205908 representing NM_014430
 Red=Cloning site Green=Tags(s)

MEYLSALNPSDLLRSVSNISSEFGRRVWTSAPPPQRPFRVCDHKRTIRKGLTAATRQELLAKALETLLLN
 GVLTLVLEEDGTAVDSEDFQLLEDDTCLMVLQSGQSWSPTRSGVLSYGLGRERPKHSDIARFTFDVYK
 QNPRDLFGSLNVKATFYGLYSMSCDFQGLGPKKVLRELLRWTSTLLQGLGHMLLGISSTLRHAVEGAEQW
 QQKGRLLHSY

TRTRPLE - GFP Tag - V

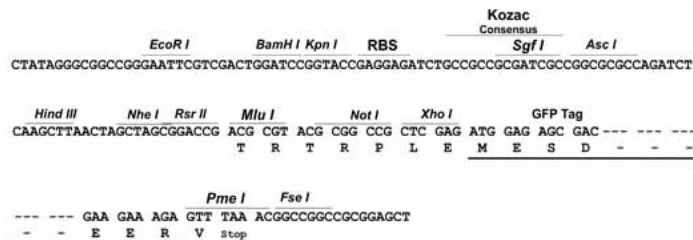
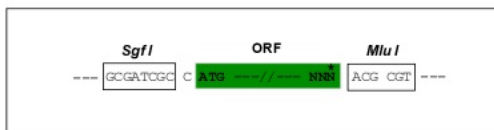


[View online »](#)

Restriction Sites: SgfI-MluI

Cloning Scheme:

Cloning sites used for ORF Shutting:



ACCN: NM_014430

ORF Size: 657 bp

OTI Disclaimer: The molecular sequence of this clone aligns with the gene accession number as a point of reference only. However, individual transcript sequences of the same gene can differ through naturally occurring variations (e.g. polymorphisms), each with its own valid existence. This clone is substantially in agreement with the reference, but a complete review of all prevailing variants is recommended prior to use. [More info](#)

OTI Annotation: This clone was engineered to express the complete ORF with an expression tag. Expression varies depending on the nature of the gene.

Components: The ORF clone is ion-exchange column purified and shipped in a 2D barcoded Matrix tube containing 10ug of transfection-ready, dried plasmid DNA (reconstitute with 100 ul of water).

Reconstitution Method:

1. Centrifuge at 5,000xg for 5min.
2. Carefully open the tube and add 100ul of sterile water to dissolve the DNA.
3. Close the tube and incubate for 10 minutes at room temperature.
4. Briefly vortex the tube and then do a quick spin (less than 5000xg) to concentrate the liquid at the bottom.
5. Store the suspended plasmid at -20°C. The DNA is stable for at least one year from date of shipping when stored at -20°C.

RefSeq: [NM_014430.3](#)

RefSeq Size: 2252 bp

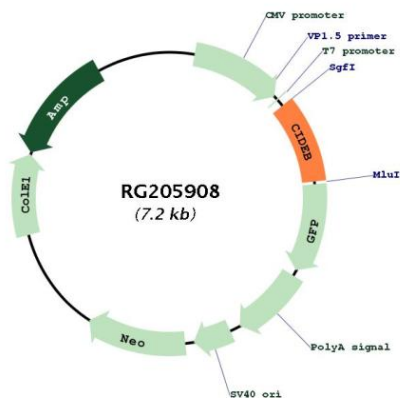
RefSeq ORF: 660 bp

Locus ID: 27141

UniProt ID: [Q9UHD4](#)

Cytogenetics: 14q12
Domains: CAD
Protein Families: Druggable Genome
Gene Summary: Activates apoptosis.[UniProtKB/Swiss-Prot Function]

Product images:



Circular map for RG205908