

Product datasheet for **RG205896**

ICAM4 (NM_001544) Human Tagged ORF Clone

Product data:

Product Type:	Expression Plasmids
Product Name:	ICAM4 (NM_001544) Human Tagged ORF Clone
Tag:	TurboGFP
Symbol:	ICAM4
Synonyms:	CD242; LW
Mammalian Cell Selection:	Neomycin
Vector:	pCMV6-AC-GFP (PS100010)
E. coli Selection:	Ampicillin (100 ug/mL)
ORF Nucleotide Sequence:	>RG205896 representing NM_001544 Red=Cloning site Blue=ORF Green=Tags(s)

TTTTGTAATACGACTCACTATAGGGCGGCCGGAATTCGTCGACTGGATCCGGTACCGAGGAGATCTGCC
GCC**CGATCGCC**

ATGGGGTCTCTGTTCCCTCTGTCGCTGCTGTTTTTTTTGGCGGCCGCTACCCGGGAGTTGGGAGCGCGC
TGGGACGCCGACTAAGCGGGCGCAAAGCCCCAAGGGTAGCCCTCTCGCGCCCTCCGGGACCTCAGTGCC
CTTCTGGGTGCGCATGAGCCCGGAGTTCGTGGCTGTGCAGCCGGGAAGTCAGTGCAGCTCAATTGCAGC
AACAGCTGTCCCCAGCCGAGAATTCAGCCTCCGCACCCCGCTCGGCAAGGCAAGACGCTCAGAGGGC
CGGGTTGGGTGTCTTACCAGCTGCTCGAGTGAGGGCCTGGAGCTCCCTCGCGCACTGCCTCGTGACCTG
CGCAGGAAAAACAGCTGGGCCACCTCCAGGATCACCGCCTACAAACCGCCACAGCGTATTTGGAG
CCTCCGGTCTTAAAGGGCAGGAAATACACTTTGCGCTGCCACGTGACGCAGGTGTTCCCGGTGGGCTACT
TGGTGGTGACCCTGAGGCATGGAAGCCGGGTATCTATTCCGAAAGCCTGGAGCGCTTACCCGGCCTGGA
TCTGGCAACGTGACCTTGACCTACGAGTTTGTGCTGGACCCCGCGACTTCTGGCAGCCCGTATCTGC
CACGCGCGCTCAATCTCGACGGCCTGGTGGTCCGCAACAGCTCGGCACCCATTACACTGATGCTCGCTT
GGAGCCCCGCGCCACAGCTTTGGCCTCCGTTCCATCGCTGCCCTTGTAGGGATCTCCTCACTGTGGG
CGCTGCGTACCTATGCAAGTGCCTAGCTATGAAGTCCCAGGCG

ACGCGTACGCGGCCGCTCGAG - GFP Tag - GTTTAA



[View online »](#)

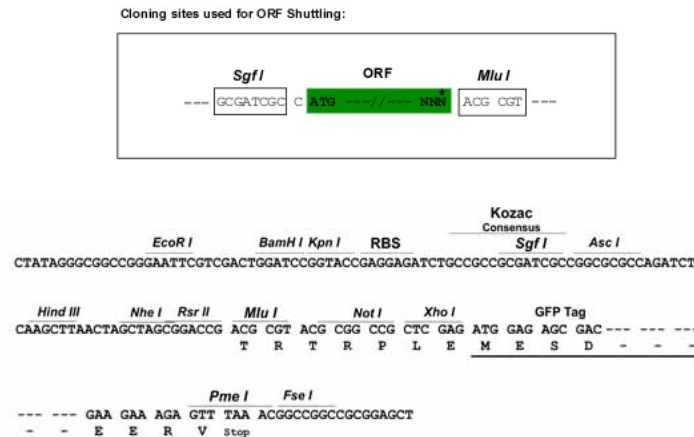
Protein Sequence: >RG205896 representing NM_001544
 Red=Cloning site Green=Tags(s)

MGSLFPLSLLFFLAAAYPGVGSALGRRTKRAQSPKGSPLAPSGTSVPFWVRMSPEFVAVQPGKSVQLNCS
 NSCPQPQNSSLRTPLRQGKTLRPGWVSYQLLDVRAWSSLAHCLVTCAGKTRWATSRITAYKPPHSVILE
 PPVLKGRKYTLRCHVTQVFPVGYLVVTLRHGSRVIYSESLERFTGLDLANVTLYEFAAGPRDFWQFPVIC
 HARLNL DGLVVRNSSAPITLMLAWSPAPTALASGSIAALVGILLTVGAAYLCKCLAMKSQA

TRTRPLE - GFP Tag - V

Restriction Sites: SgfI-MluI

Cloning Scheme:



ACCN: NM_001544

ORF Size: 813 bp

OTI Disclaimer: The molecular sequence of this clone aligns with the gene accession number as a point of reference only. However, individual transcript sequences of the same gene can differ through naturally occurring variations (e.g. polymorphisms), each with its own valid existence. This clone is substantially in agreement with the reference, but a complete review of all prevailing variants is recommended prior to use. [More info](#)

OTI Annotation: This clone was engineered to express the complete ORF with an expression tag. Expression varies depending on the nature of the gene.

Components: The ORF clone is ion-exchange column purified and shipped in a 2D barcoded Matrix tube containing 10ug of transfection-ready, dried plasmid DNA (reconstitute with 100 ul of water).

Reconstitution Method:

1. Centrifuge at 5,000xg for 5min.
2. Carefully open the tube and add 100ul of sterile water to dissolve the DNA.
3. Close the tube and incubate for 10 minutes at room temperature.
4. Briefly vortex the tube and then do a quick spin (less than 5000xg) to concentrate the liquid at the bottom.
5. Store the suspended plasmid at -20°C. The DNA is stable for at least one year from date of shipping when stored at -20°C.

RefSeq: [NM_001544.5](#)

RefSeq Size: 1273 bp

RefSeq ORF: 816 bp

Locus ID: 3386

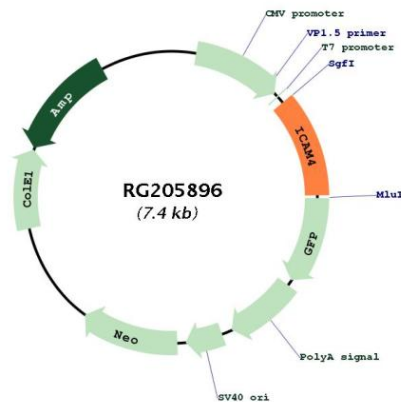
UniProt ID: [Q14773](#)

Cytogenetics: 19p13.2

Protein Families: Secreted Protein, Transmembrane

Gene Summary: This gene encodes the Landsteiner-Wiener (LW) blood group antigen(s) that belongs to the immunoglobulin (Ig) superfamily, and that shares similarity with the intercellular adhesion molecule (ICAM) protein family. This ICAM protein contains 2 Ig-like C2-type domains and binds to the leukocyte adhesion LFA-1 protein. The molecular basis of the LW(A)/LW(B) blood group antigens is a single aa variation at position 100; Gln-100=LW(A) and Arg-100=LW(B). Alternative splicing results in multiple transcript variants encoding distinct isoforms. [provided by RefSeq, Jul 2008]

Product images:



Circular map for RG205896