

## Product datasheet for **RG205878**

### SCFD2 (NM\_152540) Human Tagged ORF Clone

#### Product data:

Product Type:	Expression Plasmids
Product Name:	SCFD2 (NM_152540) Human Tagged ORF Clone
Tag:	TurboGFP
Symbol:	SCFD2
Synonyms:	STXBP1L1
Mammalian Cell Selection:	Neomycin
Vector:	pCMV6-AC-GFP (PS100010)
E. coli Selection:	Ampicillin (100 ug/mL)



[View online »](#)

ORF Nucleotide  
Sequence:

>RG205878 representing NM\_152540  
Red=Cloning site Blue=ORF Green=Tags(s)

TTTTGTAATACGACTCACTATAGGGCGGCCGGAATTCGTCGACTGGATCCGGTACCGAGGAGATCTGCC  
GCCCGCATCGCC

ATGAGCGCCTCGGGCCTACTGTCCTTTACCCAGCAAGGATGGGAGCAGGTGCTGGCCAAAGTGAACGGG  
CTGTGGTTTACCTGGACGCCGCCTGCGCCGAGAGCCTGCACTGGGGCTGCGGATCCACCCGTCTCCTGGA  
GGCGGTGGGGGTCTGACTGTACCTGCGAGAGTTTCGAGCCGACGCAATTGGTGGTGGAGCCAAGCAG  
CCCAAGGCAGTGTGTGCTGAGCTGCCTGCTGAAAGGCCGACCGTGGAGATCCTACGGGACATCATCT  
GCCGCAGTCACTTCCAGTATTGTGTGGTGGTCAACAACCGTGGAGCCAGCTGTCCACCTCACAGCTAATCA  
TGTCCCAGCGGGCAGCGGCCGAGATGGAGGGGCAGCAGCCGGTGTTCGAGCAGCTGGAGGAGAAGCTG  
TGTGAATGGATGGCAACATGAACTACACGGCCGAGGTGTCCATGTCCCATTATTGCTTGGCCCTGTTG  
CTCCCCACTTTGCCTTACTCCAGCTTTTGCATCCCTTTCCACTGCTACCCAGGATGTGCACCTCCT  
TAATAGCCCGCCGACCGGACAAGAGGAAGCTGGGAAGCCTGGGTGATGTGGACTCCACTACGTAACCCCA  
GAGCTGCTGCTGACAGATCAGATGCCTAGTGTGAGCCCTCAGTTCTCTGTGTGAACATTTAGGAGTACGGG  
AGGAGTGTGTTGCTGTAGGTTCCCTAAGTCAGGTATCGCTGCGGATCTGGCCAATTATGCCCTGCAAA  
GAACAGGAAGAAGACTGCTGCAGGCAGGGCATCAGTGGTTTTTGTGGACAGAACCCTGGATCTCACAGGA  
GCAGTTGGACATCATGGAGACAACCTTAGTAGAGAAGATCATTTACGACTTCCCCAGCTCCCAGGCCACA  
CAAATGATGTGATGGTTAACATGATAGCGCTCACTGCACTCCATACTGAGGAGGAAAATTATAATGTGGT  
TGCACCAGGCTGTCTTTCACAATCCAGTGACACCACAGCCAAAGCCCTATGGGAAGCTTTACTGAACACT  
AAGCACAAGAGGCAGTGTGGAAGTTCGAGACATCTAGTGAAGCGGCAAGCAGAGAAAACCTGCCAA  
TCAAGATGAGTATGGGGAGAGTCACACCGGGACAGCTCATGTCCATATTCAGCTCTTCAAGAACAACCT  
CAAAGCTCTAATGAATCATTGTGGCCTCCTCCAGCTTGGACTGGCCACAGCTCAAACGTTGAAACACCCA  
CAGACTGCCAAGTGGGACAACCTTCTGGCTTTTGAAGGCTCCTTCTTCAGAGCATTGGGGAGTCAGCAA  
TGTCCGTTGTGTTAAATCAGCTGCTGCCATGATTAAGCCTGTAACCCAGAGAACCAACGAGGACTACAG  
CCCTGAGGAAGTCTGATCCTTCTCATATATTTATTCTGCACTGGAGAGCTCACGGTAGACAAAGAC  
CTGTGTGAAGCAGAAGAAAAAGTCAAGAAAGCATTGGCTCAGGTCTTCTGTGAGGAATCTGGATTGTCAC  
CTTTGCTGCAAAAAATTACGACTGGGACTCTTCAATTAATCTGACATTTACAAATCCAAAATTGCCGT  
GGATGAACTCTTACTTCACTTCGGGATATTGCTGGAGCTCGGAGTCTCCTGAAACAGTTTAAGTCTGTA  
TATGTTCTGAAATCATACCCACCAGGCATCTTATAAGCCATTGTTGAAGCAAGTTGTGGAGGAAATAT  
TTCATCCCGAGAGGCCAGATTCCGTTGATATTGAACACATGTCTTCAGGCCTCACTGATCTCCTTAAAC  
TGGATTTAGCATGTTTATGAAGGTGAGCCGGCCTCATCCTAGTGACTACCCCTCCTGATCCTTTGTG  
GTAGGTGGGGTCACAGTCTCTGAAGTGAAGTGGTCAAAGATCTTGTGGCATCGTTGAAGCCAGGAACCC  
AGGTAATCGTGTGTCCACAGACTCCTGAAGCCACTTAACATTCCTGAGCTGTTATTTGCAACTGACCC  
ACTGCATCCAGACCTTGGCTTC

ACGCGTACGCGGCCGCTCGAG - GFP Tag - GTTTAA

**Protein Sequence:** >RG205878 representing NM\_152540  
 Red=Cloning site Green=Tags(s)

```

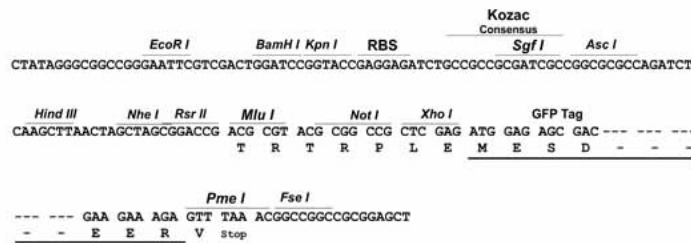
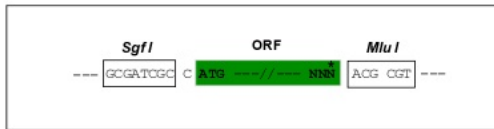
MSASGVL SFTQQGWEQVLAKVKRAVVYLDAACAESLHWGCGSTRLLEAVGGPDCHLREFEPDAIGGGAKQ
PKAVFVLSCLLKGRTVEILRDIICRSHFQYCVVTTVSHAVHLTANHVPAAAAAEMEGQQPVFEQLEEKL
CEWMGMNMYTAEVFHVPLLLAPVAPHFALTPAFASLFPLLPQDVHLLNSARPKRKLGSLGDVDSTLTP
ELLLQIRCLVSGLSSLCEHLGVREECFVAVGSLSQVIAADLANYPAPAKNRKKTAAGRASVVFVDRTLDTG
AVGHHGDNLVEKIIISALPQLPGHTNDVMVNMIALTALHTEENYNVVAPGCLSQSSDTTAKALWEALLNT
KHKEAVMEVRRHLVEAASRENLPKMSMGRVTPGQLMSYIQLFKNNLKALMNHCGLLQLGLATAQTLKHP
QTAKWDFLA FERLLLQSIGESAMSVVLNQLLPMIKPVTQRTNEDYSPEELLILLIYISVTGELTVDKD
LCEAEEKVKKALAQVFCESGLSPLLQKITDWDSSINLTFHKSKIAVDELFTSLRDIAGARSLKQFKSV
YVPGNHTHQASYKPLLKQVVEEIFHPERPDSVDIEHMSSGLTDLLKTGFMSFMKVS RPHPSDYPLLILFV
VGGVTVSEVMVKDLVASLKPQTQVIVLSTRLLKPLNIPELLFATDRLHPDLGF
  
```

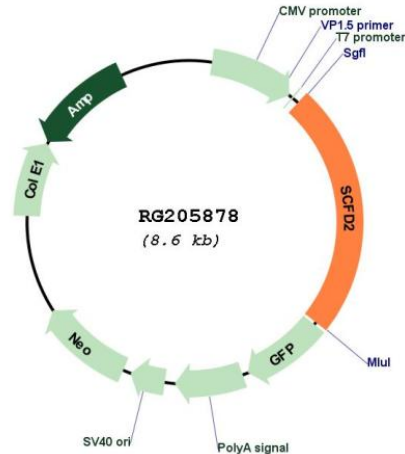
TRTRPLE - GFP Tag - V

**Restriction Sites:** SgfI-MluI

**Cloning Scheme:**

Cloning sites used for ORF Shuttling:



**Plasmid Map:**


**ACCN:** NM\_152540

**ORF Size:** 2052 bp

**OTI Disclaimer:** The molecular sequence of this clone aligns with the gene accession number as a point of reference only. However, individual transcript sequences of the same gene can differ through naturally occurring variations (e.g. polymorphisms), each with its own valid existence. This clone is substantially in agreement with the reference, but a complete review of all prevailing variants is recommended prior to use. [More info](#)

**OTI Annotation:** This clone was engineered to express the complete ORF with an expression tag. Expression varies depending on the nature of the gene.

**Components:** The ORF clone is ion-exchange column purified and shipped in a 2D barcoded Matrix tube containing 10ug of transfection-ready, dried plasmid DNA (reconstitute with 100 ul of water).

**Reconstitution Method:**

1. Centrifuge at 5,000xg for 5min.
2. Carefully open the tube and add 100ul of sterile water to dissolve the DNA.
3. Close the tube and incubate for 10 minutes at room temperature.
4. Briefly vortex the tube and then do a quick spin (less than 5000xg) to concentrate the liquid at the bottom.
5. Store the suspended plasmid at -20°C. The DNA is stable for at least one year from date of shipping when stored at -20°C.

**RefSeq:** [NM\\_152540.4](#)

**RefSeq Size:** 3204 bp

RefSeq ORF: 2055 bp  
Locus ID: 152579  
UniProt ID: [Q8WU76](#)  
Cytogenetics: 4q12  
Domains: Sec1  
Gene Summary: May be involved in protein transport.[UniProtKB/Swiss-Prot Function]