

Product datasheet for **RG205860**

ZBTB26 (NM_020924) Human Tagged ORF Clone

Product data:

Product Type:	Expression Plasmids
Product Name:	ZBTB26 (NM_020924) Human Tagged ORF Clone
Tag:	TurboGFP
Symbol:	ZBTB26
Synonyms:	bioref; ZNF481
Mammalian Cell Selection:	Neomycin
Vector:	pCMV6-AC-GFP (PS100010)
E. coli Selection:	Ampicillin (100 ug/mL)
ORF Nucleotide Sequence:	>RG205860 representing NM_020924 Red=Cloning site Blue=ORF Green=Tags(s)

TTTTGTAATACGACTCACTATAGGGCGGCCGGAATTCGTCGACTGGATCCGGTACCGAGGAGATCTGCC
GCC**CGATCGCC**

ATGTCTGAAAGATCAGATCTCCTTCACTTCAAGTTTGAAAATTATGGAGATTCAATGTTACAAAAATGA
ACAAATTAAGAGAAGAGAATAAATTTTGTGATGTTACAGTTCTCATAGATGATATTGAGGTACAGGGACA
TAAATTTGTGTTGCTGCAGGTTCCCTTCTTAAGAGACCAATTTTACTGAATGATCCAGAGAGGTG
AAATCTCCATATTACAGAGTCCGAAGTGGGAGACAATTGCTCTTATCCTGTTATAGTGGTGTGCTGG
AATTCCCTGAGATGGAAGTGGTAAATTACTTGACTGCTGCAAGTTTCTTTCAGATGAGCCACATTGTAGA
ACGGTGCACACAGGCCCTGTGGAAGTTTATAAAGCCAAAACAACCAATGGATAGTAAAGAGGGATGTGAA
CCACAGAGTGCTTCTCCCAAGTCAAAGAAGCAGCAGGGAGATGCCAGAGGCTCCCAAGCAGGACTCAC
CTTGATTCATCCATCTGAAGACAGTATGGATATGGAGGACAGTGATATTCAGATTGTTAAGGTAGAATC
TATTGGGGATGTATCAGAGGTTAGAAGTAAAAAGATCAGAACCAGTTTATTTCTTCTGAACCCACTGCT
TTACATTCATCAGAGCCCCAGCACTCCCTGATAAATCAACTGTGGAAAACAGAGTAAGTAAATAGAAC
AAAACCATCTCCACAATTATGCCCTTCTTATACAGGCAGTGATAACATCATATGGCCTCAAAGATGT
CTTTGGCCCTAATATTCGAGGTGTAGACAAAGGCTACAGTGGCATCACCAGTGCCCAAAGTGTACCAGG
GTGTTTCGTACCTGGAGAACTACGCCAACCTTTAAAAATGCACAACTCTTTATGTGTACTACTGCG
GCAAGACTTTCACCTCAGAAAGGCAACCTTCATCGACACATGCGTGTGCATGCCGGAATTAACCTTTCCA
GTGAAAAATCTGTGGAAAACCTTTTCTCAGAAGTGTTCCTTACAGGATCATCTTAACCTTCACAGTGGA
GATAAGCCCCATAAATGTAATATTGTGATATGGTTTTTGCACATAAACAGTTTTGAGGAAACACCTTA
AACAGCTGCATGGCAAAAACAGCTTTGATAATGCCAATGAGAGAAATGTACAAGACCTCACAGTGGATTT
TGATCTTTTGCATGTACAACAGTCACAGACTCTAAAGGGTGTACGCCACAACCCGATGCAACACAGGTC
CTGGATGCAGGTAACCTGGCCAAAGCTGTCTGAACCTTAAGAAATGATAGTACTTGTGTGAAT

ACGCGTACGCGGCCGCTCGAG - GFP Tag - GTTTAA



[View online >](#)

Protein Sequence: >RG205860 representing NM_020924
Red=Cloning site Green=Tags(s)

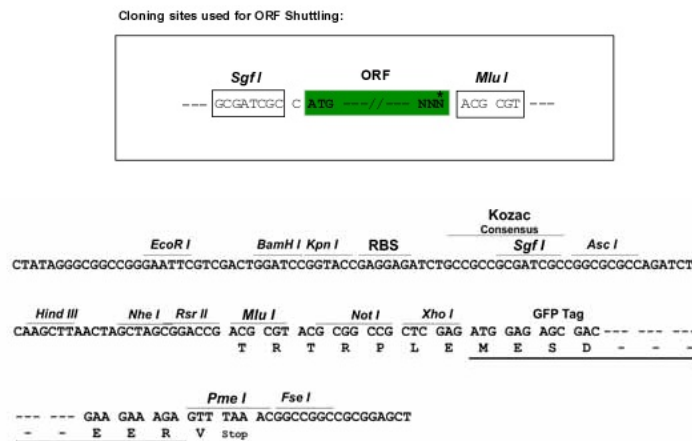
MSERSDLLHFKFENYGDMSMLQKMNKLREENKFCDDVTVLIDDIIEVQGHKIVFAAGSPFLRDQFLNDSREV
 KISILQSSEVGRQLLLSCYSGVLEFPPEMELVNYLTAASFLQMSHIVERCTQALWFKFKPKQPMDSKEGCE
 PQSASPQSKEQQGDARGSPKQDSPCIHPSEDSMDMEDSDIQIVKVESIGDVSEVRSKKDQNFISSEPTA
 LHSSEPOHSLINSTVENRVSEIEQNHLHNYALSYTGSDNIIMASKDVFVGNIRGVKGLQWHHQCPKCTR
 VFRHLENYANHLKMKHLFMCLLCGKFTTQKGNLHRHMRVHAGIKPFQCKICGKTFVQKCSLQDHLNLHSG
 DKPHKCNYCDMVFAHKPVLRKHLKQLHGKNSFDNANERNVQDLTVDFDSFACTTVTDSKGCQPDPATQV
 LDAGKLAQAVLNLNRNDSTCVN

TRTRPLE - GFP Tag - V

Chromatograms: https://cdn.origene.com/chromatograms/ja2351_g05.zip

Restriction Sites: SgfI-MluI

Cloning Scheme:



ACCN: NM_020924

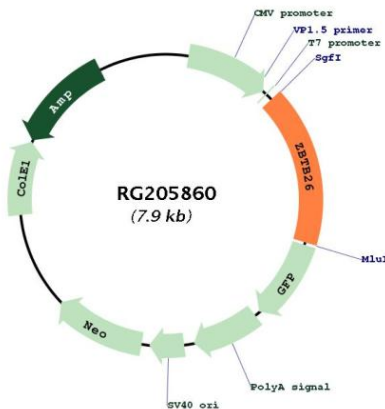
ORF Size: 1323 bp

OTI Disclaimer: Due to the inherent nature of this plasmid, standard methods to replicate additional amounts of DNA in E. coli are highly likely to result in mutations and/or rearrangements. Therefore, OriGene does not guarantee the capability to replicate this plasmid DNA. Additional amounts of DNA can be purchased from OriGene with batch-specific, full-sequence verification at a reduced cost. Please contact our customer care team at custsupport@origene.com or by calling 301.340.3188 option 3 for pricing and delivery.

The molecular sequence of this clone aligns with the gene accession number as a point of reference only. However, individual transcript sequences of the same gene can differ through naturally occurring variations (e.g. polymorphisms), each with its own valid existence. This clone is substantially in agreement with the reference, but a complete review of all prevailing variants is recommended prior to use. [More info](#)

OTI Annotation:	This clone was engineered to express the complete ORF with an expression tag. Expression varies depending on the nature of the gene.
Components:	The ORF clone is ion-exchange column purified and shipped in a 2D barcoded Matrix tube containing 10ug of transfection-ready, dried plasmid DNA (reconstitute with 100 ul of water).
Reconstitution Method:	<ol style="list-style-type: none">1. Centrifuge at 5,000xg for 5min.2. Carefully open the tube and add 100ul of sterile water to dissolve the DNA.3. Close the tube and incubate for 10 minutes at room temperature.4. Briefly vortex the tube and then do a quick spin (less than 5000xg) to concentrate the liquid at the bottom.5. Store the suspended plasmid at -20°C. The DNA is stable for at least one year from date of shipping when stored at -20°C.
RefSeq:	NM_020924.4
RefSeq Size:	1935 bp
RefSeq ORF:	1326 bp
Locus ID:	57684
UniProt ID:	Q9HCK0
Cytogenetics:	9q33.2
Domains:	BTB, zf-C2H2
Protein Families:	Transcription Factors
Gene Summary:	May be involved in transcriptional regulation.[UniProtKB/Swiss-Prot Function]

Product images:



Circular map for RG205860