

Product datasheet for **RG205855**

M-CSF (CSF1) (NM_172212) Human Tagged ORF Clone

Product data:

Product Type:	Expression Plasmids
Product Name:	M-CSF (CSF1) (NM_172212) Human Tagged ORF Clone
Tag:	TurboGFP
Symbol:	CSF1
Synonyms:	CSF-1; MCSF
Mammalian Cell Selection:	Neomycin
Vector:	pCMV6-AC-GFP (PS100010)
E. coli Selection:	Ampicillin (100 ug/mL)



[View online »](#)

ORF Nucleotide Sequence:

>RG205855 representing NM_172212
 Red=Cloning site Blue=ORF Green=Tags(s)

TTTTGTAATACGACTCACTATAGGGCGGCCGGGAATTCGTCGACTGGATCCGGTACCGAGGAGATCTGCC
 GCC**CGCATCGCC**

ATGACCGCGCCGGCGCCCGGGCGCTGCCCTCCCACGACATGGCTGGGCTCCCTGCTGTGTGGTCT
 GTCTCCTGGCGAGCAGGAGTATCACCGAGGAGGTGTCGAGACTGTAGCCACATGATTGGGAGTGACA
 CCTGCAGTCTCTGCAGCGGCTGATTGACAGTCAGATGGAGACCTCGTGCCAAATTACATTTGAGTTTGA
 GACCAGGAACAGTTGAAAGATCCAGTGTCTACCTAAGAAGGCATTTCTCCTGGTACAAGACATAATGG
 AGGACACCATGCGCTTCAGAGATAACACCCCCAATGCCATCGCCATTGTGCAGCTGCAGAACTCTCTTT
 GAGGCTGAAGAGCTGCTTACCAAGGATTATGAAGAGCATGACAAGGCCTGCGTCCGAACCTTCTATGAG
 ACACCTCTCCAGTTGCTGGAGAAGGTCAAGAATGTCTTTAATGAAACAAAGAATCTCCTTGACAAGGACT
 GGAATATTTTTCAGCAAGAACTGCAACAACAGCTTTGCTGAATGCTCCAGCCAAGATGTGGTGACCAAGCC
 TGATTGCAACTGCCTGTACCCCAAGCCATCCCTAGCAGTGACCCGGCCTCTGTCTCCCTCATCAGCCC
 CTGCCCCCTCCATGGCCCTGTGGCTGGCTTGACCTGGGAGGACTCTGAGGGAACCTGAGGGCAGCTCCC
 TCTTGCTGTGAGCAGCCCTGCACACAGTGGATCCAGGCAGTGCCAAGCAGCGGCCACCCAGGAGCAC
 CTGCCAGAGCTTTGAGCCGCCAGAGACCCAGTTGTCAAGGACAGCACCATCGGTGGCTCACCACAGCCT
 CGCCCCTCTGTGGGGCCTTCAACCCCGGGATGGAGGATATTCTTGACTCTGCAATGGGCACTAATTGGG
 TCCCAGAAGAAGCCTCTGGAGAGGCCAGTGAGATTCCCGTACCCCAAGGGACAGAGCTTTCCCTCCAG
 GCCAGGAGGGGCGAGCATGCAGACAGAGCCCGCCAGACCCAGCAACTTCTCTCAGCATCTTCTCCACTC
 CCTGCATCAGCAAAGGGCCAACAGCCGGCAGATGTAAGTGGTACAGCCTTGCCCAGGTTGGGCCCGTGA
 GGCCCACTGGCCAGGACTGGAATCACACCCCCAGAAGACAGACCATCCATCTGCCCTGCTCAGAGACCC
 CCGGAGCCAGGCTCTCCAGGATCTCATCTGCGCCCCCAGGGCCTCAGCAACCCCTCCACCCTCTCT
 GCTCAGCCACAGCTTTCCAGAAGCCACTCCTCGGGCAGCGTGCTGCCCTTGGGGAGCTGGAGGGCAGGA
 GGAGCACAGGGATCGGAGGAGCCCGCAGAGCCAGAAGGAGGACCAGCAAGTGAAGGGGAGCCAGGCC
 CCTGCCCGTTTTAACTCCGTTCTTTGACTGACACAGGCCATGAGAGGCAGTCCGAGGGATCCTCCAGC
 CCGCAGCTCCAGGAGTCTGTCTTCCACCTGCTGGTGCCAGTGTATCCTGGTCTTGCTGGCCGTCGGAG
 GCCTCTTGTCTACAGGTGGAGGCGGGAGCCATCAAGAGCCTCAGAGAGCGGATTCTCCCTTGGAGCA
 ACCAGAGGGCAGCCCCCTGACTCAGGATGACAGACAGGTGGAAGTCCAGTG

ACGCGTACGCGGCCGCTCGAG – GFP Tag – GTTTAA

Protein Sequence:

>RG205855 representing NM_172212
 Red=Cloning site Green=Tags(s)

MTAPGAAGRCPPPTTWLGSLLLLVCLLASRSITEEVSEYCSHMIGSGHLQSLQRLIDSQMETSCQITFEFV
 DQEQLKDPVICYLKKAFLLVQDIMEDTMRFRDNTPNIAIAIVQLQELSLRLKSCFTKDYEEHKACVRTFYE
 TPLQLLEKVKNVFNETHLLDKDWNIFSKNCNNSFAECSQDVVTKPDCNCLYPKAIPSSDPASVSPHQ
 LAPSMAPVAGLTWEDSEGTEGSSLLPGEQLHTVDPGSAKQRPPRSTCQSFEPPETPVVKDSTIGGSPQ
 RPSVGFNPGMEDILDSAMGTNWVPEEASGEASEIPVPQGTLSRSPRGGSMQTEPARPSNFLSASSPL
 PASAKGQQPADVTGTALPRVGPVPTGQDWNHTPQKTDHPSALLRDPPEPGSPRISLRPQGLSNPSTLS
 AQPQLSRSHSSGVLPLGELEGRSTRDRRSPAEPGGPASEGAARPLPRFNSVPLTDTGHERQSEGSSS
 PQLQESVFLHLLVPSVILVLLAVGGLLFYRWRRRSHQEPQRADSPLEQPEGSPLTQDDRQVELPV

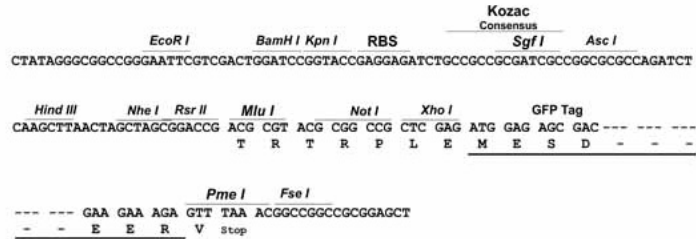
TRTRPLE – GFP Tag – V

Restriction Sites:

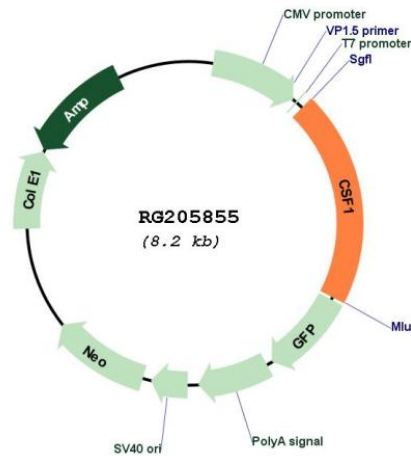
Sgfl-MluI

Cloning Scheme:

Cloning sites used for ORF Shutting:



Plasmid Map:



ACCN:	NM_172212
ORF Size:	1662 bp
OTI Disclaimer:	The molecular sequence of this clone aligns with the gene accession number as a point of reference only. However, individual transcript sequences of the same gene can differ through naturally occurring variations (e.g. polymorphisms), each with its own valid existence. This clone is substantially in agreement with the reference, but a complete review of all prevailing variants is recommended prior to use. More info
OTI Annotation:	This clone was engineered to express the complete ORF with an expression tag. Expression varies depending on the nature of the gene.
Components:	The ORF clone is ion-exchange column purified and shipped in a 2D barcoded Matrix tube containing 10ug of transfection-ready, dried plasmid DNA (reconstitute with 100 ul of water).
Reconstitution Method:	<ol style="list-style-type: none">1. Centrifuge at 5,000xg for 5min.2. Carefully open the tube and add 100ul of sterile water to dissolve the DNA.3. Close the tube and incubate for 10 minutes at room temperature.4. Briefly vortex the tube and then do a quick spin (less than 5000xg) to concentrate the liquid at the bottom.5. Store the suspended plasmid at -20°C. The DNA is stable for at least one year from date of shipping when stored at -20°C.
RefSeq:	NM_172212.1 , NP_757351.1
RefSeq Size:	2545 bp
RefSeq ORF:	1665 bp
Locus ID:	1435
UniProt ID:	P09603
Cytogenetics:	1p13.3
Protein Families:	Druggable Genome, ES Cell Differentiation/IPS, Secreted Protein, Transmembrane
Protein Pathways:	Cytokine-cytokine receptor interaction, Hematopoietic cell lineage
Gene Summary:	The protein encoded by this gene is a cytokine that controls the production, differentiation, and function of macrophages. The active form of the protein is found extracellularly as a disulfide-linked homodimer, and is thought to be produced by proteolytic cleavage of membrane-bound precursors. The encoded protein may be involved in development of the placenta. Alternate splicing results in multiple transcript variants. [provided by RefSeq, Sep 2011]