

Product datasheet for **RG205846**

splicing factor 1 (SF1) (NM_201998) Human Tagged ORF Clone

Product data:

Product Type:	Expression Plasmids
Product Name:	splicing factor 1 (SF1) (NM_201998) Human Tagged ORF Clone
Tag:	TurboGFP
Symbol:	splicing factor 1
Synonyms:	BBP; D11S636; MBBP; ZCCHC25; ZFM1; ZNF162
Mammalian Cell Selection:	Neomycin
Vector:	pCMV6-AC-GFP (PS100010)
E. coli Selection:	Ampicillin (100 ug/mL)



[View online »](#)

ORF Nucleotide Sequence:

>RG205846 representing NM_201998
 Red=Cloning site Blue=ORF Green=Tags(s)

TTTTGTAATACGACTCACTATAGGGCGGCCGGGAATTCGTCGACTGGATCCGGTACCGAGGAGATCTGCC
 GCC**GCGATCGCC**

ATGGCGACCGGAGCGAACGCCACGCCGTTGGACTTCCAAGTAAAGCGGAAGAGGAGCCGCTGGAACC
 AAGACACAATGGAACAGAAGACAGTATTCCAGGAATGCCTACAGTTATCCCCCTGGACTTACTCGAGA
 ACAAGAAAGAGCTTATATAGTCAACTGCAGATAGAAGACCTGACTCGTAAACTGCGCACAGGAGACCTG
 GGCATCCCCCTAACCTGAGGACAGGTCCCCTTCCCCTGAGCCCATCTACAATAGCGAGGGGAAGCGGC
 TTAACACCCGAGAGTTCCGCACCCGAAAAAGCTGGAAGAGGAGCGGCACAACCTCATCACAGAGATGGT
 TGCCTCAATCCGGATTTCAAGCCACCTGCAGATTACAAACCTCCAGCAACACGTGTGAGTGATAAAGTC
 ATGATTCCACAAGATGAGTACCCAGAAATCAACTTTGTGGGGCTGCTCATCGGGCCAGAGGGAACACCC
 TGAAGAACATAGAGAAGGAGTGCATGCCAAGATTATGATCCGGGGAAAGGGTCTGTGAAAGAAGGGAA
 GGTGGGGCGCAAAGATGGCCAGATGTTGCCAGGAGAAGATGAGCCACTTCATGCCCTGGTACTGCCAAT
 ACAATGGAGAACGTCAAAAAGGCAGTGAACAGATAAGAAACATCCTGAAGCAGGGTATCGAGACTCCAG
 AGGACCAGAATGATCTACGGAAGATGCAGCTTCGGGAGTTGGCTCGCTTAAATGGGACCCCTTCGGGAAGA
 CGATAACAGGATCTTAAGACCCTGGCAGAGCTCAGAGACCCGAGCATTACCAACACCACAGTGTGTACC
 AAGTGTGGAGGGGCTGGCCACATTTGCTCAGACTGTAAATTCAAAGGCCTGGTGTCTCAGTCAGCTC
 AGGATAAAGCACGGATGGATAAAGAATATTTGTCCTCATGGTGAACGGGTGAAGCACCTGTCCCAGC
 ATCTGTGGGCTCCACCTCTGGGCTGCCACCACACCCCTGGCCAGCGCACCTCGTCTGTGCTCCCAGC
 AACAAACCACCTCCACCTCTCATGTCTACCACCCAGAGCCGCCACCCTGGATGAATTCTGGCCCTT
 CAGAGAGTCCGGCCTACCACGGCATGCATGGAGTGGTCTGGTGGGCCCGGAGGTGGCCCCACAGCTT
 CCCACACCCATTACCCAGCCTGACAGGTGGGATGGTGGACATCCCATGCAGCACAAACCCCAATGGACCC
 CCACCCCTTGGATGCAGCCACCACCACCCGATGAACCAGGGCCCCACCCCTCTGGGACCATTGGCC
 CTCTCCAATGGATCAGTACCTGGGAAGTACGCTGTGGGCTCTGGGTCTATCGCTGCATCAAGGAAA
 AGGTATGATGCCGCCACCACCTATGGGCATGATGCCGCCGCCGCCGCCCTCCAGTGGGCAGCCCCCA
 CCCCCTCCTCTGGTCTTCCCCCATGGCAACAACAGCAGCAGCAGCCTCCGCCACCCCTCCGCCCA
 GCAGCAGTATGGTTCAGTACCCCTTGCATGGCAGCAAAGATCCCTCCCGCGGCGGCGATGGCCCG
 AGCCATGAGAGTGAGGACTTCCGCGCCATTGG

ACGCGTACGCGGCCGCTCGAG - GFP Tag - GTTTAA

Protein Sequence:

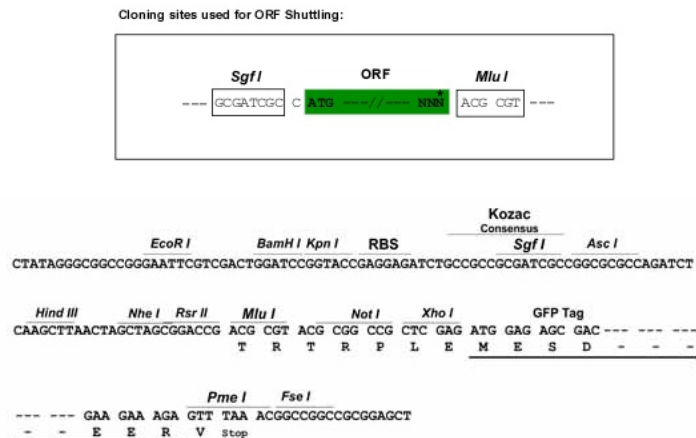
>RG205846 representing NM_201998
 Red=Cloning site Green=Tags(s)

MATGANATPLDFPSKKRKRSRWNQDTMEQKTVIPGMPTVIPPGLTREQERAYIVLQIQLIEDLTRKLRGDL
 GIPPNPEDRSPSEPIYNSEGKRLNTRFTRKLEERHNLITEMVALNPDFKPPADYKPPATRVSDKV
 MIPQDEYPEINFVGLLIGPRGNTLNKIEKECNAKIMIRGKGSVKEGKVGKRDGQMLPGEDEPLHALVTAN
 TMENVKKAQEIRNLIKQGIETPEDQNDLRKMQRELARLNGTLREDDNRILRPWQSSETRITNTTVCT
 KCGGAGHIASDCKFQRPQDPQSAQDKARMDKEYLSLMAELGEAPVPASVGSTSGPATTPLASAPRPAAPA
 NNPPPPSLMSTTQSRPPWMNSGPSESRPYHGMHGGGPGGPGGPHSFPHPLPSL TGGHGGHPMQHNPNGP
 PPPWMQPPPPMNQPHPPGHGPPPMQYLGSTPVGSGVYRLHQGKGMPPPPMGMPPPPPPPSGQPP
 PPPSGPLPPWQQQQPPPPPPSSMASSTPLPWQQRSLPAAAMARAMRVRTFRAHW

TRTRPLE - GFP Tag - V

Restriction Sites:

Sgfl-Mlul

Cloning Scheme:


ACCN: NM_201998

ORF Size: 1644 bp

OTI Disclaimer: The molecular sequence of this clone aligns with the gene accession number as a point of reference only. However, individual transcript sequences of the same gene can differ through naturally occurring variations (e.g. polymorphisms), each with its own valid existence. This clone is substantially in agreement with the reference, but a complete review of all prevailing variants is recommended prior to use. [More info](#)

OTI Annotation: This clone was engineered to express the complete ORF with an expression tag. Expression varies depending on the nature of the gene.

Components: The ORF clone is ion-exchange column purified and shipped in a 2D barcoded Matrix tube containing 10ug of transfection-ready, dried plasmid DNA (reconstitute with 100 ul of water).

Reconstitution Method:

1. Centrifuge at 5,000xg for 5min.
2. Carefully open the tube and add 100ul of sterile water to dissolve the DNA.
3. Close the tube and incubate for 10 minutes at room temperature.
4. Briefly vortex the tube and then do a quick spin (less than 5000xg) to concentrate the liquid at the bottom.
5. Store the suspended plasmid at -20°C. The DNA is stable for at least one year from date of shipping when stored at -20°C.

RefSeq: [NM_201998.3](#)

RefSeq Size: 2890 bp

RefSeq ORF: 1647 bp

Locus ID: 7536

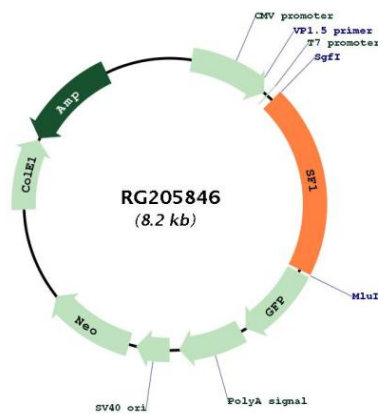
UniProt ID: [Q15637](#)

Cytogenetics: 11q13.1

Protein Families: Transcription Factors

Gene Summary: This gene encodes a nuclear pre-mRNA splicing factor. The encoded protein specifically recognizes the intron branch point sequence at the 3' splice site, together with the large subunit of U2 auxiliary factor (U2AF), and is required for the early stages of spliceosome assembly. It also plays a role in nuclear pre-mRNA retention and transcriptional repression. The encoded protein contains an N-terminal U2AF ligand motif, a central hnRNP K homology motif and quaking 2 region which bind a key branch-site adenosine within the branch point sequence, a zinc knuckles domain, and a C-terminal proline-rich domain. Alternative splicing results in multiple transcript variants. [provided by RefSeq, Oct 2016]

Product images:



Circular map for RG205846