

Product datasheet for **RG205844**

BubR1 (BUB1B) (NM_001211) Human Tagged ORF Clone

Product data:

Product Type: Expression Plasmids
Product Name: BubR1 (BUB1B) (NM_001211) Human Tagged ORF Clone
Tag: TurboGFP
Symbol: BubR1
Synonyms: Bub1A; BUB1beta; BUBR1; hBUBR1; MAD3L; MVA1; SSK1
Mammalian Cell Selection: Neomycin
Vector: pCMV6-AC-GFP (PS100010)
E. coli Selection: Ampicillin (100 ug/mL)
ORF Nucleotide Sequence: >RG205844 representing NM_001211
Red=Cloning site Blue=ORF Green=Tags(s)

TTTTGTAATACGACTCACTATAGGGCGGCCGGAATTCGTCGACTGGATCCGGTACCGAGGAGATCTGCC
GCC**CGATCGCC**

ATGGCGCGGTGAAGAAGGAAGGGGTGCTCTGAGTGAAGCCATGTCCCTGGAGGGAGATGAATGGGAAC
TGAGTAAAGAAAATGTACAACCTTTAAGGCAAGGGCGGATCATGTCCACGCTTCAGGGAGCACTGGCACA
AGAATCTGCCTGTACAATACTCTTCAGCAGCAGAAAACGGGCATTTGAATATGAAATTCGATTTTACT
GGAAATGACCCTCTGGATGTTTGGGATAGGTATATCAGCTGGACAGAGCAGAATATCCTCAAGGTGGGA
AGGAGAGTAATATGTCAACGTTATTAGAAAGAGCTGTAGAAGCACTACAAGGAGAAAAACGATATTATAG
TGATCCTCGATTTCTCAATCTCTGGCTTAAATTAGGGCGTTTATGCAATGAGCCTTTGGATATGTACAGT
TACTTGCACAACCAAGGGATTGGTGTTCCTGCTCAGTTCTATATCTCATGGGCAGAAGAATATGAAG
CTAGAGAAAACCTTTAGGAAAGCAGATGCGATATTTTCAAGGAGGATTCAACAGAAGGCTGAACCACTAGA
AAGACTACAGTCCAGCACCCGACAATCCAAGCTCGAGTGTCTCGGCAAACCTCTGTTGGCACTTGAGAAA
GAAGAAGAGGAGGAAGTTTTTGGTCTTCTGTACCACAACGAAGCACACTAGCTGAACTAAAGAGCAAAG
GGAAAAAGACAGCAAGAGCTCCAATCATCCGTGTAGGAGGTGCTCTCAAGGCTCCAAGCCAGAACAGAGG
ACTCCAAAATCCATTTCTCAACAGATGCAAAAATAATAGTAGAATTACTGTTTTTGTGAAAAATGCTGAT
GAGGCTTCTACAGCAGAGTTGTCTAAGCCTACAGTCCAGCCATGGATAGCACCCCACTGCCAGGGCCA
AAGAGAATGAGCTGCAAGCAGGCCCTTGGAAACACAGGCAGGTCCTTGGAAACACAGGCCTCGTGGCAATAC
AGCTTCACTGATAGCTGTACCCGCTGTGCTTCCAGTTTCACTCCATATGTGGAAGAGACTGCACAACAG
CCAGTTATGACACCATGTAAAATTGAACCTAGTATAAACACATCCTAAGCACCAGAAAAGCTGGAAAGG
AAGAAGGAGATTCTACAAAAGGTTTCAAGCCATCAGCAAGCGTCTGAGGAGAAGAAAAGAGAAGATGAT
GTATTGTAAGGAGAAGATTTATGCAGGAGTAGGGGAATTTCTCCTTTGAAGAAATTCGGGCTGAAGTTTTT
CGGAAGAAATTAAGAGCAAAGGGAAGCCGAGCTATTGACCAGTGCAGAGAAGAGAGCAGAAATGCAGA
AACAGATTGAAGAGATGGAGAAGAAGCTAAAAGAAATCCAACTACTCAGCAAGAAAGAACAGGTGATCA
GCAAGAAGAGACGATGCCTACAAAGGAGACAATAAACTGCAAAATGCTCCGAGTCTCAGAAAATACCA



[View online »](#)

GGAATGACTCTATCCAGTTCGTTTGTCAAGTAACTGTTGTGCCAGAGAACTTCACTTGCGGAGAACA
 TTTGGCAGGAACAACCTCATTCTAAAGGTCCCAGTGTACCTTTCTCCATTTTGTAGTGTCTTCTTTTC
 AGAAAAGAAGAATAAAAGTCTCCTGCAGATCCCCACGAGTTTTAGCTCAACGAAGACCCCTTGCAGTT
 CTCAAACCTCAGAAAGCATCACCTCAAATGAAGATGTGTCTCCAGATGTTTGTGATGAATTTACAGGAA
 TTGAACCTTGAGCGAGGATGCCATTATCACAGGCTTCAGAAATGTAACAATTTGCCTAACCCAGAAGA
 CACTTGTGACTTTGCCAGAGCAGCTCGTTTTGTATCCACTCCTTTTCATGAGATAATGTCCTTGAAGGAT
 CTCCCTTCTGATCCTGAGAGACTGTTACCGGAAGAAGATCTAGATGTAAGACCTCTGAGACCAGCAGA
 CAGCTTGTGGCACTATCTACAGTCAGACTCTCAGCATCAAGAAGCTGAGCCCAATTATTGAAGACAGTCG
 TGAAGCCACACACTCCTCTGGCTTCTCTGGTCTTCTGCCTCGGTTGCAAGCACCTCCTCCATCAATGT
 CTTCAAATTCCTGAGAACTAGAACTTACTAATGAGACTTCAGAAAACCTACTCAGTCACCATGGTGT
 CACAGTATCGCAGACAGCTACTGAAGTCCCTACCAGAGTTAAGTGCCTCTGCAGAGTTGTGTATAGAAGA
 CAGACCAATGCCTAAGTTGAAAATTGAGAAGGAAATTGAATTAGGTAATGAGGATTACTGCATTAACGA
 GAATACCTAATATGTGAAGATTACAAGTATTCTGGGTGGCGCCAAGAACTCTGCAGAATTAACAGTAA
 TAAAGGTATCTTCTAACCTGTCCCATGGGACTTTTATATCAACCTCAAGTTAAAGGAACGTTTAAATGA
 AGATTTTGATCATTTTTGACAGTGTATCAATATCAAGATGGCTGTATTGTTTGGCACCAATATATAAC
 TGCTTACCCTTTCAGGATCTTCTCAACACAGTGAATATATTACCATGAAATAACAGTGTGATTATTT
 ATAACCTTTTGACAATAGTGGAGATGCTACACAAGCAGAAATAGTCCATGGTGACTTGAGTCCAAGGTG
 TCTGATTTCTCAGAAAACAGAAATCCACGATCCCTATGATTGTAACAAGAACAATCAAGCTTTGAAGATAGT
 GACTTTTCTACAGTGTGACCTTAGGGTGCAGCTGGATGTTTTACCCTCAGCGGCTTTTCGGACTGTAC
 AGATCTTGAAGGACAAAAGATCCTGGCTAACTGTTCTTCTCCCTACCAGGTAGACTGTTTGGTATAGC
 AGATTTAGCACATTTACTATTGTTCAAGGAACCTACAGGTCTTCTGGGATGGGCTCTTCTGAAAATT
 AGCCAAAATATTTCTGAGCTAAAAGATGGTGAATTGTGGAATAAATCTTTGTGCGGATTCTGAATGCCA
 ATGATGAGGCCACAGTGTCTGTTCTTGGGAGCTTGCAGCAGAAATGAATGGGGTTTTTGACACTACATT
 CCAAAGTCACCTGAACAAAGCCTTATGGAAGGTAGGGAAGTTAACTAGTCTGGGCTTTGCTCTTTCAG

ACGCGTACGCGGCCGCTCGAG - GFP Tag - GTTTAA

Protein Sequence:

>RG205844 representing NM_001211
 Red=Cloning site Green=Tags(s)

MAAVKKEGGALSEAMSLEGDEWELSKENVQPLRQGRIMSTLQGALAQESACNNTLQQKRAFYEYIRFYT
 GNDPLDVWDRIYSWTEQNYPPQGGKESNMSTLLERAVEALQGEKRYSDPRFLNLWLKLGRLCNEPLDMYS
 YLHNQIGIVSLAQFYISWAEYEARENFRKADAIQEQIQKAEPLERLQSQRQFQARVSRQTLLEK
 EEEEEVFESSVPQRSTLAEKSKGKKTARAPIIRVGGALKAPSNRGLQNPFPQQMNNRITVFDENAD
 EASTAELSKPTVQPWIAPPMPRAKENELQAGPWNTGRSLEHRPRGNTASLIIVPAVLPSTPYVEETAQQ
 PVMTPEKIEPSINHILSTRKPGKEEGDSLQRVQSHQQASEEKKEKMMYCKEKIYAGVGEFSFEEIRAQEV
 RKKLKEQREAEALLTSAEKRAEMQKQIEEMKLLKEIQTTQERTGDQEEETMPTKETTKLQIASQSQKIP
 GMTLSSSVCQVNCCARETSLAENIWQEQPHSKGPSVPFIFDEFLLSEKKNKSPADPPRVLQRRPLAV
 LKTSSEITSNEDVSPDVCFEFTGIEPLSEDAIITGFRNVTICPNPEDTDCFARAARFVSTPFHEIMSLKD
 LPSPDERLLPEEDLDVKTSEDQQTACGTIYSQTLSEKLSPIIIESREATHSSGFSGSSASVASTSSIKC
 LQIPEKLELTNETSENPTQSPWCSQYRRQLLKSPELSASAELCIEDRPMPEKLEIEKEIELGNEDYCIK
 EYLICEDYKLFVWAPRNSAELTVIKVSSQVPWFYINLKLKERLNEDFDHFCSCYQYQDGCIVWHQYIN
 CFTLQDLLQHSEYITHEITVLIINLLTIVEMLHKAIEIVHGDLSPRCLILRNRIHDPYDCNKNQALKIV
 DFSYSVDLRVQLDVFTLSGFRVQILEGQKILANCSSPYQVDFGIADLAHLLLFKEHLQVFDGFSFWKL
 SQNISELKDGEELWNKFFVRILNANDEATVSVLGELAAEMNGVFDTTTFQSHLNKALWKVKGKLTSPGALLFQ

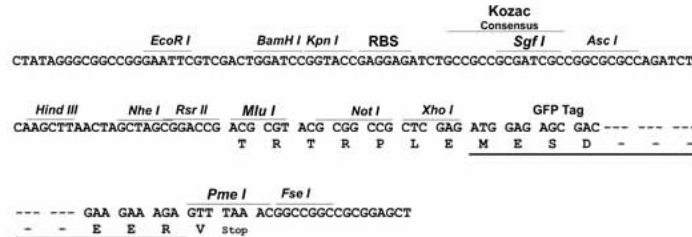
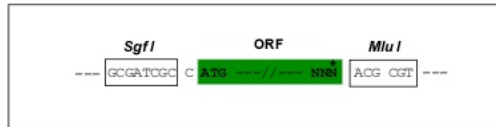
TRTRPLE - GFP Tag - V

Restriction Sites:

Sgfl-MluI

Cloning Scheme:

Cloning sites used for ORF Shutting:



ACCN: NM_001211

ORF Size: 3150 bp

OTI Disclaimer: Due to the inherent nature of this plasmid, standard methods to replicate additional amounts of DNA in E. coli are highly likely to result in mutations and/or rearrangements. Therefore, OriGene does not guarantee the capability to replicate this plasmid DNA. Additional amounts of DNA can be purchased from OriGene with batch-specific, full-sequence verification at a reduced cost. Please contact our customer care team at custsupport@origene.com or by calling 301.340.3188 option 3 for pricing and delivery.

The molecular sequence of this clone aligns with the gene accession number as a point of reference only. However, individual transcript sequences of the same gene can differ through naturally occurring variations (e.g. polymorphisms), each with its own valid existence. This clone is substantially in agreement with the reference, but a complete review of all prevailing variants is recommended prior to use. [More info](#)

OTI Annotation: This clone was engineered to express the complete ORF with an expression tag. Expression varies depending on the nature of the gene.

Components: The ORF clone is ion-exchange column purified and shipped in a 2D barcoded Matrix tube containing 10ug of transfection-ready, dried plasmid DNA (reconstitute with 100 ul of water).

Reconstitution Method:

1. Centrifuge at 5,000xg for 5min.
2. Carefully open the tube and add 100ul of sterile water to dissolve the DNA.
3. Close the tube and incubate for 10 minutes at room temperature.
4. Briefly vortex the tube and then do a quick spin (less than 5000xg) to concentrate the liquid at the bottom.
5. Store the suspended plasmid at -20°C. The DNA is stable for at least one year from date of shipping when stored at -20°C.

RefSeq: [NM_001211.3](#)

RefSeq Size: 3721 bp

RefSeq ORF: 3153 bp

Locus ID: 701

UniProt ID: [O60566](#)

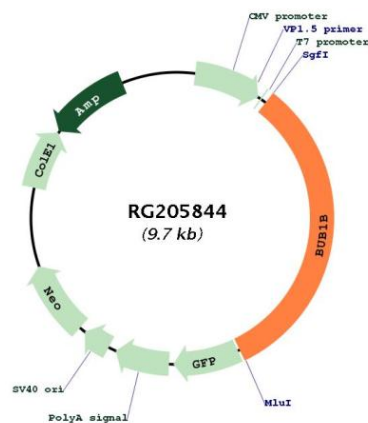
Cytogenetics: 15q15.1

Protein Families: Druggable Genome, Protein Kinase, Stem cell - Pluripotency

Protein Pathways: Cell cycle

Gene Summary: This gene encodes a kinase involved in spindle checkpoint function. The protein has been localized to the kinetochore and plays a role in the inhibition of the anaphase-promoting complex/cyclosome (APC/C), delaying the onset of anaphase and ensuring proper chromosome segregation. Impaired spindle checkpoint function has been found in many forms of cancer. [provided by RefSeq, Jul 2008]

Product images:



Circular map for RG205844