

Product datasheet for **RG205816**

CTIP1 (BCL11A) (NM_018014) Human Tagged ORF Clone

Product data:

Product Type:	Expression Plasmids
Product Name:	CTIP1 (BCL11A) (NM_018014) Human Tagged ORF Clone
Tag:	TurboGFP
Symbol:	BCL11A
Synonyms:	BCL11A-L; BCL11a-M; BCL11A-S; BCL11A-XL; CTIP1; DILOS; EVI9; HBFQTL5; ZNF856
Mammalian Cell Selection:	Neomycin
Vector:	pCMV6-AC-GFP (PS100010)
E. coli Selection:	Ampicillin (100 ug/mL)



[View online »](#)

ORF Nucleotide
Sequence:

>RG205816 representing NM_018014
Red=Cloning site Blue=ORF Green=Tags(s)

TTTTGTAATACGACTCACTATAGGGCGGCCGGGAATTCGTCGACTGGATCCGGTACCGAGGAGATCTGCC
GCC**CGGATCGCC**

ATGTCTCGCCGAAGCAAGGCAAACCCAGCACTTAAGCAAACGGGAATTCGCCCCGAGCCTCTTGAAG
CCATTCTTACAGATGATGAACCAGACCACGGCCGTTGGGAGCTCCAGAAGGGGATCATGACCTCCTCAC
CTGTGGGCAGTGCCAGATGAACCTCCATTGGGGACATTCTATTTTTATCGAGCACAACGGAACAA
TGCAATGGCAGCCTCTGCTTAGAAAAAGCTGTGGATAAGCCACCTTCCCCTTACCAATCGAGATGAAAA
AAGCATCCAATCCCGTGGAGGTTGGCATCCAGGTCACGCCAGAGGATGACGATTGTTTATCAACGTCATC
TAGAGGAATTTGCCCAAACAGGAACACATAGCAGATAAACTTCTGCACTGGAGGGGCTCTCTCCCCT
CGTTCTGCACATGGAGCTCTAATCCCCACGCCTGGGATGAGTGCAGAATATGCCCCGAGGGTATTTGTA
AAGATGAGCCCAGCAGCTACACATGTACAATTGCAAACAGCCATTACCAGTGCATGGTTTCTCTTGCA
ACACGCACAGAACACTCATGGATTAAGAATCTACTTAGAAAGCGAACACGGAAGTCCCCTGACCCCGCGG
GTTGGTATCCCTTCAGGACTAGGTGCAGAATGTCTTCCAGCCACCTCTCCATGGGATTCATATTGCGAG
ACAATAACCCCTTAACTGCTAAGAATACCAGGATCAGTATCGAGAGAGGCTTCCGGCCTGGCAGAAGG
GCGTTTTCCACCCACTCCCCCTGTTTAGTCCACCACCGAGACATCACTTGGACCCCAACCGCATAGAG
CGCCTGGGGGCGGAAGAGATGGCCCTGGCCACCATCACCCGAGTGCCTTTGACAGGGTGCCTGCGGTTGA
ATCCAATGGCTATGGAGCCTCCCGCCATGGATTTCTCTAGGAGACTTAGAGAGCTGGCAGGGAACACGTC
TAGCCACCGCTGTCCCAGGCCGGCCAGCCCTATGCAAAGTTACTGCAACCATTCAGCCAGGTAGC
AAGCCGCCCTTCTGGCAGCCCCCTCCCTCTGCAATCCGCCCTCTCCCTCCAGCCCCCGG
TCAAGTCCAAGTCATGCGAGTTCTGGGCAAGACGTTCAAATTTACAGAGCAACCTGGTGGTCCACGGCG
CAGCCACACGGGGGAGAAGCCCTACAAGTGCAACCTGTGCGACACGCGTGCACCCAGGCCAGCAAGCTG
AAGCGCCACATGAAGACGCACATGCACAAATCGTCCCCATGACGGTCAAGTCCGACGACGGTCTCTCCA
CCGCCAGCTCCCCGGAACCCGGCACCAGCGACTTGGTGGGCAGCGCCAGCAGCGCTCAAGTCCGTGGT
GGCCAAGTTCAAGAGCGAGAACGACCCCAACCTGATCCCGGAGAACGGGGACGAGGAGGAAGAGGAGGAC
GACGAGGAAGAGGAAGAAGAGGAGGAAGAGGAGGAGGAGGAGTACGCGAGAGCGAGAGGGTGGACTACG
GCTTCGGGCTGAGCCTGGAGGCGCGGCCACCACGAGAACAGCTCGCGGGGCGCGGTCTGGGCGTGGG
CGACGAGAGCCGCGCCCTGCCGACGTCATGCAGGGCATGGTGTCTAGCTCCATGCAGCACTTCAGCGAG
GCCTTCCACCAGTCTCTGGGCGAGAAGCATAAGCGCGGCCACCTGGCCGAGGCCAGGGCCACAGGGACA
CTTGCGACGAAGACTCGGTGGCCGGCGAGTCGGACCGCATAGACGATGGCACTGTTAATGGCCGCGGCTG
CTCCCCGGGCGAGTGGCCTCGGGGGGCTGTCCAAAAGCTGCTGCTGGGCAGCCCCAGCTCGCTGAGC
CCCTTCTTAAGCGCATCAAGCTCGAGAAGGAGTTCGACCTGCCCCGGCCGCGATGCCAACACGGAGA
ACGTGTACTCGCAGTGGCTCGCCGGCTACGCGGCTCCAGGCAGCTCAAAGATCCCTTCTTAGCTTCGG
AGACTCCAGACAATCGCCTTTTGCTCTCTGTCGGAGCACTCTCGGAGAACGGGAGCTTGGCTTCTCC
ACACCGCCCGGGAGCTGGACGGAGGGATCTCGGGGCGCAGCGGCACGGGAAGTGGAGGGAGCACGCCCC
ATATTAGTGGTCCGGGCCGGCAGGCCAGCTCAAAGAGGGCAGACGCGACGACACTTGTCTTCCACA
CACCCCATTCGGCGTAGTACCCAGAGAGCTCAAGATGTGTGGCAGTTTTTCGGATGGAAGCTCGAGAGCC
CTTAAGTTC

AC**GGGCCGCT**TCGAG - GFP Tag - GTTTAA

Protein Sequence: >RG205816 representing NM_018014
 Red=Cloning site Green=Tags(s)

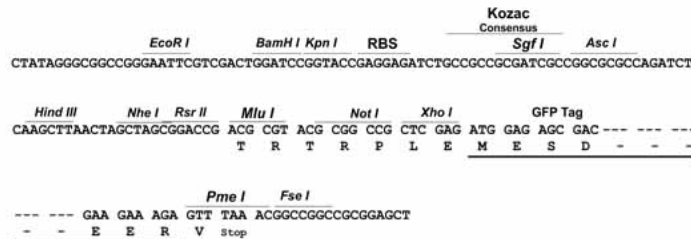
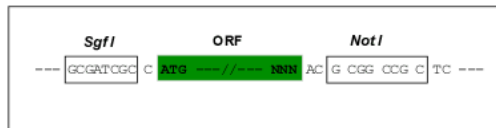
```
MSRRKQGKPKHL SKREFSPEPLEAILT DDEPDHGPLGAPEGDHDLLTCGQCQMNFP LGDILIFIEHKRKQ
CNGSLCLEKAVDKPPSPSPIEMKKASNPVEVGIQVTPEDDDCLSTSSRGICPKQEHIADKLLHWRGLSSP
RSAHGALIPTPGMSAEYAPQGICKDEPSSYTCTTCKQPFTSAWFL LQHAQNTHGLRIYLESEHGSPLTPR
VGIPSGLGAECPSQPPLHGIHIADNPNFNLLRIPGVSVSREASGLAEGRFPTPPLFSPPPRHLDPHRIE
RLGAEEMALATHHPSAFDRVLR LNP MAMEPPAMDFSRRLRELAGNTSSPPLSPGRPSMQRL LQPFQPGS
KPPFLATPPLPPLQSAPPPSQPPVKSCEFCGKTFKFQSNLVVHRRSHTGEKPYKCNLCDHACTQASKL
KRHMKTHMHKSSPMTVKSD DGLSTASSPEPGTSDLVGSASSALKSVVAKFKSENDPNLIPENGDEEEEEEED
DEEEEEEEEEEEEEELTESERVDYGFGLSLEAARHHENSSRGAVVGVGDESRALPDVMQGMV LSSMQHFSE
AFHQVLGEKHKRGH LAEAEGHRDTCDEDSVAGESDRID DGTVNGRGCSPGESASGGLSKKLL LGSPPSSL
PFSKRILEKEFDLPPAAMPNTENVYSQWLAGYAASRQLKDPFLSFGDSRQSPFASSEHSENGSLRFS
TPPGELDGGISGRSGTSGGGSTPHISGPGGRPSKEGRRSDTCSHTPIRRSTQRAQDVWFSDGSSRA
LKF
```

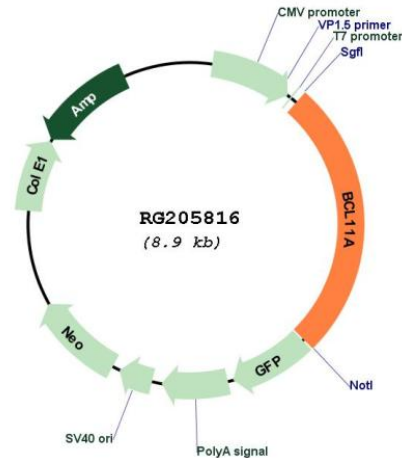
TRPLE - GFP Tag - V

Restriction Sites: SgfI-NotI

Cloning Scheme:

Cloning sites used for ORF Shuttling:



Plasmid Map:


ACCN: NM_018014

ORF Size: 2319 bp

OTI Disclaimer: The molecular sequence of this clone aligns with the gene accession number as a point of reference only. However, individual transcript sequences of the same gene can differ through naturally occurring variations (e.g. polymorphisms), each with its own valid existence. This clone is substantially in agreement with the reference, but a complete review of all prevailing variants is recommended prior to use. [More info](#)

OTI Annotation: This clone was engineered to express the complete ORF with an expression tag. Expression varies depending on the nature of the gene.

Components: The ORF clone is ion-exchange column purified and shipped in a 2D barcoded Matrix tube containing 10ug of transfection-ready, dried plasmid DNA (reconstitute with 100 ul of water).

Reconstitution Method:

1. Centrifuge at 5,000xg for 5min.
2. Carefully open the tube and add 100ul of sterile water to dissolve the DNA.
3. Close the tube and incubate for 10 minutes at room temperature.
4. Briefly vortex the tube and then do a quick spin (less than 5000xg) to concentrate the liquid at the bottom.
5. Store the suspended plasmid at -20°C. The DNA is stable for at least one year from date of shipping when stored at -20°C.

RefSeq: [NM_018014.2](#), [NP_060484.2](#)

RefSeq Size: 3958 bp

RefSeq ORF: 2322 bp

Locus ID: 53335

UniProt ID: [Q9H165](#)

Cytogenetics: 2p16.1

Domains: zf-C2H2

Protein Families: Transcription Factors

Gene Summary: This gene encodes a C2H2 type zinc-finger protein by its similarity to the mouse Bcl11a/Evi9 protein. The corresponding mouse gene is a common site of retroviral integration in myeloid leukemia, and may function as a leukemia disease gene, in part, through its interaction with BCL6. During hematopoietic cell differentiation, this gene is down-regulated. It is possibly involved in lymphoma pathogenesis since translocations associated with B-cell malignancies also deregulates its expression. Multiple transcript variants encoding several different isoforms have been found for this gene. [provided by RefSeq, Jul 2008]