

Product datasheet for **RG205800**

AP4M1 (NM_004722) Human Tagged ORF Clone

Product data:

Product Type:	Expression Plasmids
Product Name:	AP4M1 (NM_004722) Human Tagged ORF Clone
Tag:	TurboGFP
Symbol:	AP4M1
Synonyms:	CPSQ3; MU-4; MU-ARP2; SPG50
Mammalian Cell Selection:	Neomycin
Vector:	pCMV6-AC-GFP (PS100010)
E. coli Selection:	Ampicillin (100 ug/mL)



[View online »](#)

ORF Nucleotide Sequence:

>RG205800 representing NM_004722
 Red=Cloning site Blue=ORF Green=Tags(s)

TTTTGTAATACGACTCACTATAGGGCGGCCGGAATTCGTCGACTGGATCCGGTACCGAGGAGATCTGCC
 GCC**GCGATCGCC**

ATGATTTCCCAATTCTTCATTCTGTCTCCAAGGGGACCGCTCATCTACAAAGACTTCCGCGGGGACA
 GTGGCGCGGGATGTGGCCGAGCTCTTCTACCGAAGCTGACGGGACTGCCAGGAGACGAGTCCCCGGT
 TGTTCATGCATCACCATGGCCGTCATTTTATTACATCAGACACAGCGGCCTCTATTTGGTGGTCACAAC
 TCAGAAAACGTTTCTCCCTTCAGCCTCCTAGAAGTGTCTCCAGGTTGGCCACCCTTCTGGGCGATTACT
 GTGGCTCCCTGGGCGAGGGGACCATCTCCCGCAATGTGGCTCTGGTATACGAAGTCTGGATGAAGTGT
 GGACTATGGCTATGTACAGACCACATCCACGGAGATGCTGAGGAATTTTCATCCAGACGGAAGCTGTGGT
 AGCAAGCCCTTCAGCCTTTGACCTCAGCAGCGTTGGCTTGTGGGGTGAGACACAACAGAGCAAAG
 TGGCCCCAGCAGTGCAGCCAGCCGCCCTCTGTCCAGTCGCTGACCAGAGCCAAAAGATGAAGT
 TTTTTGGATGTGGTCGAGAGATTGTCTGTACTGATAGCATCTAATGGATCCCTGCTGAAGTGGATGTG
 CAGGGAGAGATTCGGCTCAAGAGCTTCTTCTAGCGGCTCTGAGATGCGCATTGGCTTGACGGAAGAGT
 TTTGTGTGGGAAGTCAGAGCTGAGAGTTATGGGCCAGGAATCCGGGTCGATGAAGTCTCGTTTACAG
 CTCTGTGAATCTGGACGAATTTGAGTCTCATCGAATCCTCCGCTTGCAACCACCTCAGGGCGAGCTGACT
 GTGATGCGGTACCAACTCTCCGATGACCTCCCCTACCGCTCCCCTTCCGGCTCTTCCCCTCTGTGCAGT
 GGGACCGAGGCTCAGGCCGGCTCCAGGTTTATCTAAAGTTGCGATGTGACCTGCTCTCAAAGAGCCAAGC
 CCTCAATGTCAGGCTGCACCTCCCCGCTCGAGGGTGGTCAAGCTGTCTCAGGAGCTGAGCAGCCCA
 GAGCAGAAGGCTGAGCTGGCAGAGGGAGCCCTTCGCTGGGACCTGCCTCGGGTCAAGGAGGCTCTCAAC
 TCTCAGGCCTTTCCAGATGGAGCTCCAGGGCCCCAGGACCTCCAGCCATGGGCTCTCCACCTCGGC
 CTCTCCTCTGGGCTGGGCCCTGCCAGTCTCTCCTTCGAGCTTCCCCGGCACACGTGCTCTGGCCTCCAG
 GTCGATTCTCAGGCTGGCCTCAGGCCATGCGCAATGCCAACCCCAAGTGGGTGCGACACCTAA
 GCCACAGCGAGCCTATGTCATTCGGATC

AC**GCGGCCGCTCGAG** – GFP Tag – GTTTAA

Protein Sequence:

>RG205800 representing NM_004722
 Red=Cloning site Green=Tags(s)

MISQFFILSSKGDPLIYKDFRGDSGGRDVAELFYRKL TGLPGDESPVVMHHHGRHF IHIRHSGLYLVVTT
 SENVSPFSLLELLSRLATLLGDYCGSLGEGTISRVALVYELLDEVLDYGYVQTTSTEMLRNFIQTEAVV
 SKPFSLFDLSSVGLFGAETQQSKVAPSSAASRPVLSSRSQSQKNEVFLDVVERLSVLIASNGSLLKVDV
 QGEIRLKSFLPSGSEMRIGL TEEFCVKGSELRGYGP GIRVDEVSFHSVNLDEFESHRI LR LQPPQGELT
 VMRYQLSDDLPSPLPFRLFPSVQWDRGSGRLQVYLKLRCDLLSKSQALNVRLHLPLPRGVVSLSQELSSP
 EQKAELAEALRWDLPRVQGSQLSGLFQMDVPGPPGPPSHGLSTSASPLGLGPASLSFELPRHTCSGLQ
 VRFLRLAFRPGNANPHKWVRLSHSDAYVIRI

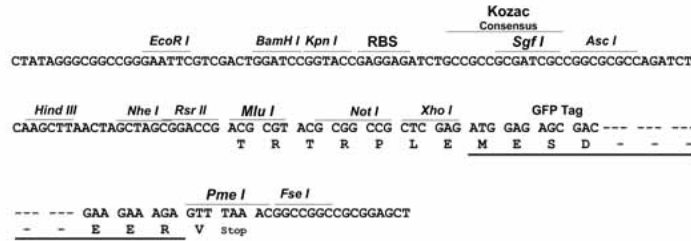
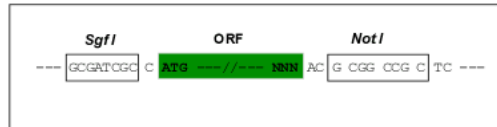
TRPLE – GFP Tag – V

Restriction Sites:

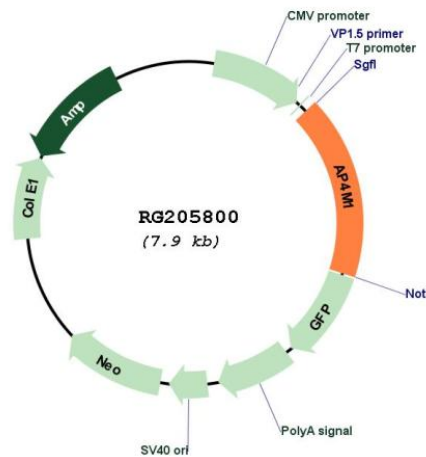
SgfI-NotI

Cloning Scheme:

Cloning sites used for ORF Shuttling:



Plasmid Map:



ACCN: NM_004722

ORF Size: 1359 bp

OTI Disclaimer: The molecular sequence of this clone aligns with the gene accession number as a point of reference only. However, individual transcript sequences of the same gene can differ through naturally occurring variations (e.g. polymorphisms), each with its own valid existence. This clone is substantially in agreement with the reference, but a complete review of all prevailing variants is recommended prior to use. [More info](#)

OTI Annotation: This clone was engineered to express the complete ORF with an expression tag. Expression varies depending on the nature of the gene.

Components:	The ORF clone is ion-exchange column purified and shipped in a 2D barcoded Matrix tube containing 10ug of transfection-ready, dried plasmid DNA (reconstitute with 100 ul of water).
Reconstitution Method:	<ol style="list-style-type: none">1. Centrifuge at 5,000xg for 5min.2. Carefully open the tube and add 100ul of sterile water to dissolve the DNA.3. Close the tube and incubate for 10 minutes at room temperature.4. Briefly vortex the tube and then do a quick spin (less than 5000xg) to concentrate the liquid at the bottom.5. Store the suspended plasmid at -20°C. The DNA is stable for at least one year from date of shipping when stored at -20°C.
RefSeq:	NM_004722.4
RefSeq Size:	1818 bp
RefSeq ORF:	1362 bp
Locus ID:	9179
UniProt ID:	O00189
Cytogenetics:	7q22.1
Domains:	Adap_comp_sub
Protein Pathways:	Lysosome
Gene Summary:	This gene encodes a subunit of the heterotetrameric AP-4 complex. The encoded protein belongs to the adaptor complexes medium subunits family. This AP-4 complex is involved in the recognition and sorting of cargo proteins with tyrosine-based motifs from the trans-golgi network to the endosomal-lysosomal system. [provided by RefSeq, Jul 2008]