

## Product datasheet for **RG205799**

### PPP1R14A (NM\_033256) Human Tagged ORF Clone

#### Product data:

**Product Type:** Expression Plasmids  
**Product Name:** PPP1R14A (NM\_033256) Human Tagged ORF Clone  
**Tag:** TurboGFP  
**Symbol:** PPP1R14A  
**Synonyms:** CPI-17; CPI17; PPP1INL  
**Mammalian Cell Selection:** Neomycin  
**Vector:** pCMV6-AC-GFP (PS100010)  
**E. coli Selection:** Ampicillin (100 ug/mL)  
**ORF Nucleotide Sequence:** >RG205799 representing NM\_033256  
 Red=Cloning site Blue=ORF Green=Tags(s)

TTTTGTAATACGACTCACTATAGGGCGGCCGGAATTCGTCGACTGGATCCGGTACCGAGGAGATCTGCC  
 GCC**CGATCGCC**

ATGGCAGCTCAGCGGCTGGCAAGCGCTGCTGAGCAAGCTGCAGTCTCCATCGCGGGCCCGGGCCAG  
 GGGGCAGTCCCGGGGGCTGCAGAAGCGGCACGCGCGCTCACCGTCAAGTATGACCGCGGGAGCTGCA  
 GCGGGCGTGGACGTGGAGAAGTGGATCGACGGGCGCTGGAGGAGCTGTACCGCGCATGGAGGCAGAC  
 ATGCCCGATGAGATCAACATTGATGAATTGTTGGAGTTAGAGAGTGAAGAGGAGAGAAGCCGAAAAATCC  
 AGGGACTCCTGAAGTCATGTGGAAACCTGTCGAGGACTTCATCCAGGAGCTGCTGGCAAAGCTTCAAGG  
 CCTCCACAGGCAGCCCGCCTCCGCCAGCAAGCCCTCCACGACGGCAGCCTCAGCCCCCTCCAGGAC  
 CGGGCCCGGACTGCTCACCCC

**ACGCGTACGCGGCCGCTCGAG** - GFP Tag - GTTTAA

**Protein Sequence:** >RG205799 representing NM\_033256  
 Red=Cloning site Green=Tags(s)

MAAQRLLGKRVLSKLSQSPSRARGPGGSPGGLQKRHARVTVKYDRRELQRRLDVEKWIDGRLEELYRMEAD  
 MPDEINIDELLESEEEERSRKIQGLLKSCGKPVDFIQELLAKLQGLHRQPGLRQSPSPSHDGLSPLQD  
 RARTAHP

**TRTRPLE** - GFP Tag - V

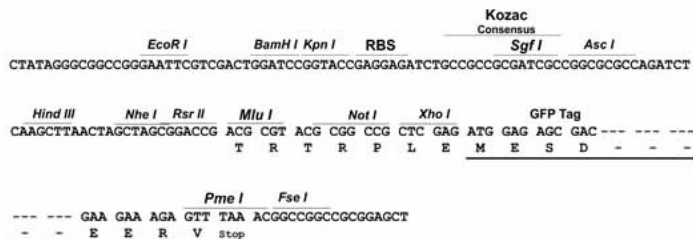
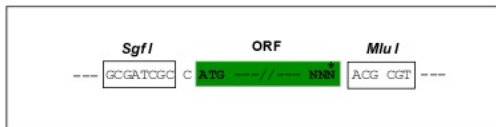
**Restriction Sites:** Sgfl-MluI



[View online »](#)

**Cloning Scheme:**

Cloning sites used for ORF Shutting:


**ACCN:** NM\_033256

**ORF Size:** 441 bp

**OTI Disclaimer:** The molecular sequence of this clone aligns with the gene accession number as a point of reference only. However, individual transcript sequences of the same gene can differ through naturally occurring variations (e.g. polymorphisms), each with its own valid existence. This clone is substantially in agreement with the reference, but a complete review of all prevailing variants is recommended prior to use. [More info](#)

**OTI Annotation:** This clone was engineered to express the complete ORF with an expression tag. Expression varies depending on the nature of the gene.

**Components:** The ORF clone is ion-exchange column purified and shipped in a 2D barcoded Matrix tube containing 10ug of transfection-ready, dried plasmid DNA (reconstitute with 100 ul of water).

**Reconstitution Method:**

1. Centrifuge at 5,000xg for 5min.
2. Carefully open the tube and add 100ul of sterile water to dissolve the DNA.
3. Close the tube and incubate for 10 minutes at room temperature.
4. Briefly vortex the tube and then do a quick spin (less than 5000xg) to concentrate the liquid at the bottom.
5. Store the suspended plasmid at -20°C. The DNA is stable for at least one year from date of shipping when stored at -20°C.

**Note:** Plasmids are not sterile. For experiments where strict sterility is required, filtration with 0.22um filter is required.

**RefSeq:** [NM\\_033256.3](#)
**RefSeq Size:** 723 bp

**RefSeq ORF:** 444 bp

**Locus ID:** 94274  
**UniProt ID:** [Q96A00](#)  
**Cytogenetics:** 19q13.2  
**Domains:** PP1\_inhibitor  
**Protein Families:** Druggable Genome  
**Protein Pathways:** Vascular smooth muscle contraction

**Gene Summary:** The protein encoded by this gene belongs to the protein phosphatase 1 (PP1) inhibitor family. This protein is an inhibitor of smooth muscle myosin phosphatase, and has higher inhibitory activity when phosphorylated. Inhibition of myosin phosphatase leads to increased myosin phosphorylation and enhanced smooth muscle contraction. Alternatively spliced transcript variants encoding different isoforms have been noted for this gene. [provided by RefSeq, Sep 2011]

### Product images:



Circular map for RG205799