

## Product datasheet for **RG205791**

### CALML3 (NM\_005185) Human Tagged ORF Clone

#### Product data:

**Product Type:** Expression Plasmids  
**Product Name:** CALML3 (NM\_005185) Human Tagged ORF Clone  
**Tag:** TurboGFP  
**Symbol:** CALML3  
**Synonyms:** CLP  
**Vector:** pCMV6-AC-GFP (PS100010)  
**E. coli Selection:** Ampicillin (100 ug/mL)  
**Cell Selection:** Neomycin  
**ORF Nucleotide Sequence:** >RG205791 representing NM\_005185  
**Red**=Cloning site **Blue**=ORF **Green**=Tags(s)

TTTTGTAATACGACTCACTATAGGGCGGCCGGGAATTCGTCGACTGGATCCGGTACCGAGGAGATCTGCC  
GCC**GCGATCGC**

ATGGCCGACCAGCTGACTGAGGAGCAGGTCACAGAATTC AAGGAGGCCTTCTCCCTGTTTGACAAGGATG  
GGGACGGCTGCATCACCACCCGCGAGCTGGGCACGGTCATGCGGTCCCTGGCCAGAACCCACGGAGGC  
CGAGCTGCGGGACATGATGAGTGAGATCGACCGGGACGGCAACGGCACCGTGGACTTCCCGAGTTCCTG  
GGCATGATGGCCAGGAAGATGAAGGACACGGACAACGAGGAGGAGATCCGCGAGGCCTTCCGCGTGTTCG  
ACAAGGACGGCAACGGCTTCGTAGCGCCGCGAGCTGCGACACGTCATGACCCGGCTGGGGGAGAAGCT  
GAGTGACGAGGAGGTGGACGAGATGATCCGGGCCGCGGACACGGACGGAGACGGACAGGTGAACACGAG  
GAGTTTGTCCGTGTGCTGGTGTCCAAG

**ACGCGT**ACGCGGCCGCTCGAG - GFP Tag - GTTTAA

**Protein Sequence:** >RG205791 representing NM\_005185  
**Red**=Cloning site **Green**=Tags(s)

MADQL TEEQVTEFKEAFSLFDKDGDCITTRRELGTVMRSLGQNPTAEALRDMSEIDRDNGTVDVFPEFL  
GMMARKMKDNDNEEIEIAFRVFDKDGNGFVSAELRHVMTRLGEKLSDEEVDEMIRAADTDGQGQVNYE  
EFVRVLVSK

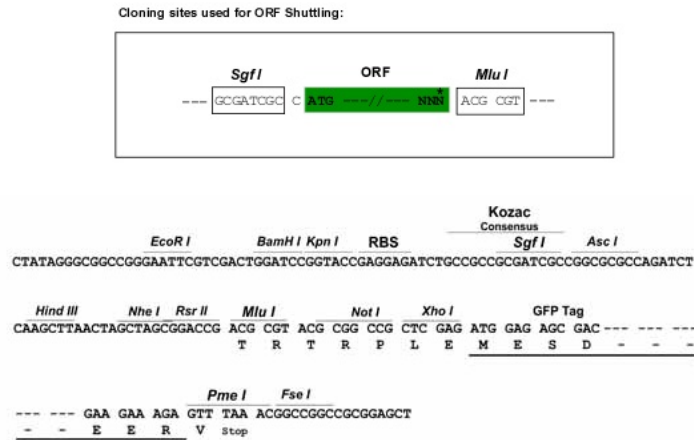
**TR**TRPLE - GFP Tag - V

**Restriction Sites:** SgfI-MluI

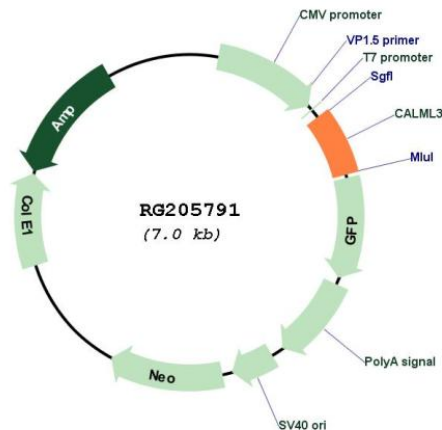


[View online »](#)

Cloning Scheme:



Plasmid Map:



ACCN: NM\_005185

ORF Size: 447 bp

OTI Disclaimer: The molecular sequence of this clone aligns with the gene accession number as a point of reference only. However, individual transcript sequences of the same gene can differ through naturally occurring variations (e.g. polymorphisms), each with its own valid existence. This clone is substantially in agreement with the reference, but a complete review of all prevailing variants is recommended prior to use. [More info](#)

OTI Annotation: This clone was engineered to express the complete ORF with an expression tag. Expression varies depending on the nature of the gene.

RefSeq: [NM\\_005185.1](#), [NP\\_005176.1](#)

RefSeq Size: 450 bp

RefSeq ORF: 450 bp

Locus ID: 810

Cytogenetics: 10p15.1

Protein Pathways: Alzheimer's disease, Calcium signaling pathway, Glioma, GnRH signaling pathway, Insulin signaling pathway, Long-term potentiation, Melanogenesis, Neurotrophin signaling pathway, Olfactory transduction, Oocyte meiosis, Phosphatidylinositol signaling system, Vascular smooth muscle contraction