

## Product datasheet for **RG205733**

### DR1 (NM\_001938) Human Tagged ORF Clone

#### Product data:

**Product Type:** Expression Plasmids  
**Product Name:** DR1 (NM\_001938) Human Tagged ORF Clone  
**Tag:** TurboGFP  
**Symbol:** DR1  
**Synonyms:** NC2; NC2-BETA; NC2B; NCB2  
**Mammalian Cell Selection:** Neomycin  
**Vector:** pCMV6-AC-GFP (PS100010)  
**E. coli Selection:** Ampicillin (100 ug/mL)  
**ORF Nucleotide Sequence:** >RG205733 representing NM\_001938  
 Red=Cloning site Blue=ORF Green=Tags(s)

TTTTGTAATACGACTCACTATAGGGCGGCCGGAATTCGTCGACTGGATCCGGTACCGAGGAGATCTGCC  
 GCC**CGATCGCC**

ATGGCTTCCTCGTCTGGCAACGATGATGATCTCACTATCCCCAGAGCTGCTATCAATAAAATGATCAAAG  
 AGACTCTTCTAATGTCCGGGTGGCCAACGATGCTCGAGAGCTGGTGGTGAAGTCTGCACTGAATTCAT  
 TCACCTTATATCTTCTGAAGCCAATGAGATTTGTAACAAATCGGAAAAGAAGACCATCTCACCAGAGCAT  
 GTCATACAAGCACTAGAAAAGTTGGGATTTGGCTCTTACATCAGTGAAGTAAAAGAAGTCTTGAAGAGT  
 GTAAAACAGTAGCATTAAAAGAAGAAAGGCCAGTTCTCGTTTGGAAAACCTTGGCATTCTGAAGAAGA  
 GTTATTGAGACAGCAACAAGAATTATTTGCAAAAAGCTAGACAGCAACAAGCAGAATTGGCCCAACAGGAA  
 TGGCTTCAAATGAGCAAGCTGCCCAACAAGCCAGCTTGTGCTGCCTCAGCCAGTGCATCTAATCAGG  
 CGGATCTTCTCAGGATGAAGAAGATGATGATGATATC

**ACGCGT**ACGCGGCCGCTCGAG - GFP Tag - GTTTAA

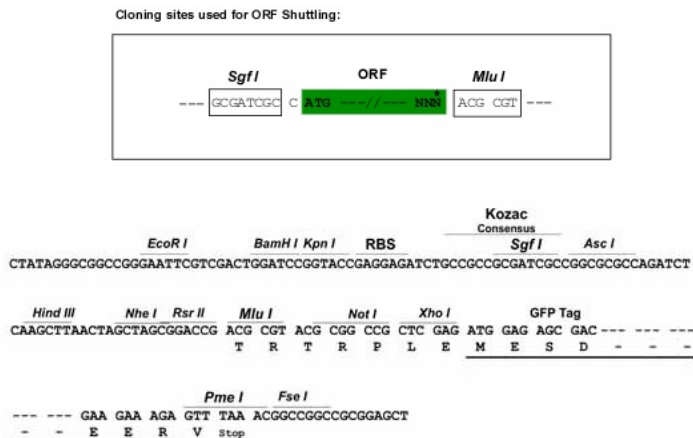
**Protein Sequence:** >RG205733 representing NM\_001938  
 Red=Cloning site Green=Tags(s)

MASSSGNDDDLTIPRAAINKMIKETLPNVRVANDARELVVNCCTEFIHLISSEANEICNKSEKKTISPEH  
 VIQALES LGFGSYISEVKEVLQECKTVALKRRKASSRLENLGIPEEELLRQQQLFAKARQQQAELAQQE  
 WLQMQQAAQQAQLAAASASASNQAGSSQDEEDDDDI

**TRTRPLE** - GFP Tag - V

**Restriction Sites:** Sgfl-MluI



**Cloning Scheme:**


**ACCN:** NM\_001938

**ORF Size:** 528 bp

**OTI Disclaimer:** The molecular sequence of this clone aligns with the gene accession number as a point of reference only. However, individual transcript sequences of the same gene can differ through naturally occurring variations (e.g. polymorphisms), each with its own valid existence. This clone is substantially in agreement with the reference, but a complete review of all prevailing variants is recommended prior to use. [More info](#)

**OTI Annotation:** This clone was engineered to express the complete ORF with an expression tag. Expression varies depending on the nature of the gene.

**Components:** The ORF clone is ion-exchange column purified and shipped in a 2D barcoded Matrix tube containing 10ug of transfection-ready, dried plasmid DNA (reconstitute with 100 ul of water).

**Reconstitution Method:**

1. Centrifuge at 5,000xg for 5min.
2. Carefully open the tube and add 100ul of sterile water to dissolve the DNA.
3. Close the tube and incubate for 10 minutes at room temperature.
4. Briefly vortex the tube and then do a quick spin (less than 5000xg) to concentrate the liquid at the bottom.
5. Store the suspended plasmid at -20°C. The DNA is stable for at least one year from date of shipping when stored at -20°C.

**RefSeq:** [NM\\_001938.3](#)

**RefSeq Size:** 3222 bp

**RefSeq ORF:** 531 bp

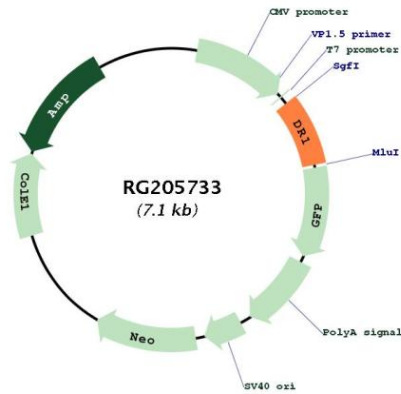
**Locus ID:** 1810

**UniProt ID:** [Q01658](#)

**Cytogenetics:** 1p22.1  
**Domains:** Cbfd\_nfyb\_hmf  
**Protein Families:** Transcription Factors

**Gene Summary:** This gene encodes a TBP- (TATA box-binding protein) associated phosphoprotein that represses both basal and activated levels of transcription. The encoded protein is phosphorylated in vivo and this phosphorylation affects its interaction with TBP. This protein contains a histone fold motif at the amino terminus, a TBP-binding domain, and a glutamine- and alanine-rich region. The binding of DR1 repressor complexes to TBP-promoter complexes may establish a mechanism in which an altered DNA conformation, together with the formation of higher order complexes, inhibits the assembly of the preinitiation complex and controls the rate of RNA polymerase II transcription. [provided by RefSeq, Jul 2008]

**Product images:**



Circular map for RG205733