

Product datasheet for **RG205708**

Adipose Triglyceride Lipase (PNPLA2) (NM_020376) Human Tagged ORF Clone

Product data:

Product Type:	Expression Plasmids
Product Name:	Adipose Triglyceride Lipase (PNPLA2) (NM_020376) Human Tagged ORF Clone
Tag:	TurboGFP
Symbol:	Adipose Triglyceride Lipase
Synonyms:	1110001C14Rik; ATGL; FP17548; iPLA2zeta; PEDF-R; TTS-2.2; TTS2
Mammalian Cell Selection:	Neomycin
Vector:	pCMV6-AC-GFP (PS100010)
E. coli Selection:	Ampicillin (100 ug/mL)



[View online »](#)

ORF Nucleotide Sequence:

>RG205708 representing NM_020376
 Red=Cloning site Blue=ORF Green=Tags(s)

TTTTGTAATACGACTCACTATAGGGCGGCCGGGAATTCGTCGACTGGATCCGGTACCGAGGAGATCTGCC
 GCC**GCGATCGCC**

ATGTTTCCCCGCGAGAAGACGTGGAACATCTCGTTCGCGGGCTGCGGCTTCTCGGCGTCTACTACGTCCG
 GGTGGCCTCCTGCCTCCGCGAGCACGCCCTTCTGGTGGCCAACGCCACGCACATCTACGGCGCCTC
 GGCCGGGGCGCTCACGGCCACGGCGCTGGTCACGGGGTCTGCCTGGGTGAGGCTGGTGCCTAAGTTCATT
 GAGGTATCTAAGAGGCCCGGAAGCGGTTCTGGGCCCTGCACCCCTCCTTCAACCTGGTAAAGATCA
 TCCGCAGTTTCTGCTGAAGTCTGCCTGCTGATAGCCATGAGCATGCCAGTGGGCGCTGGGCATCTC
 CCTGACCCGCGTGTGACAGCGGAGAATGTCATTATATCCCACTCAACTCCAAGGACGAGCTCATCCAG
 GCCAATGTCTGCAGCGGTTTCATCCCCGTACTGTGGGCTCATCCCTCCCTCCAGGGGTGCGCT
 ACGTGGATGGTGGCATTTCAGACAACCTGCCACTCTATGAGCTTAAGAACCACATCACAGTGTCCCCTT
 CTGGGGCAGAGTGACATCTGTCCGAGGACAGCTCCACCAACATCCACGAGCTGCGGGTACCAACACC
 AGCATCCAGTTCAACCTGCGCAACCTCTACCGCCTCTCCAAGGCCCTTCTCCCGCGGAGCCCTGGTGC
 TGGCAGAGATGTGCAAGCAGGGATACCGGGATGGCTGCGCTTTCTGCAGCGGAACGGCCTCCTGAACCG
 GCCAACCCTTGTGGCGTTGCCCGCCCGCCCGCCACGGCCAGAGGACAAGGACCAGGCGAGTGGAG
 AGCGCCAAGCGGAGGATTACTCGCAGCTGCCGGGAGAAGATCACATCTGGAGCACCTGCCCGCCGGC
 TCAATGAGGCCCTGTGGAGGCTGCGTGGAGCCACGGACCTGCTGACCACCCTCTCCAACATGCTGCC
 TGTGCGTCTGGCCACGGCCATGATGGTGCCTACACGCTGCCGCTGGAGAGCGCTCTGTCTTACCATC
 CGTTGCTGGAGTGGCTGCCGACGTTCCCGAGGACATCCGGTGGATGAAGGAGCAGACGGGCAGCATCT
 GCCAGTACCTGGTATGCGCGCCAAGAGGAAGCTGGGCAGGACCTGCCCTCCAGGCTGCCGGCAGGTT
 GGAGTGCGCCGGTCCAGTCCGCTGCCGTCGCGTGTCTGCGCCGCTACAGAGAGGACACTGCCCGCC
 GGCTGGATGCGCAACAACCTCTCGCTGGGGACGCGCTGGCCAAGTGGGAGGAGTCCAGCGCCAGCTGC
 TGCTCGGCTCTTCTGCACCAACGTGGCCTTCCCGCCGAAGCTCTGCGCATGCGCGCACCCGCCGACCC
 GGCTCCCGCCCCCGGGACCCAGCATCCCCGAGCACCAGCTGGCCGGGCTGCCCTTGTGAGCACC
 CCTGCTCCCGAGGCCCGGCCGTGATCGGGCCCTGGGGCTG

ACGCGTACGCGGCCGCTCGAG – GFP Tag – GTTTAA

Protein Sequence:

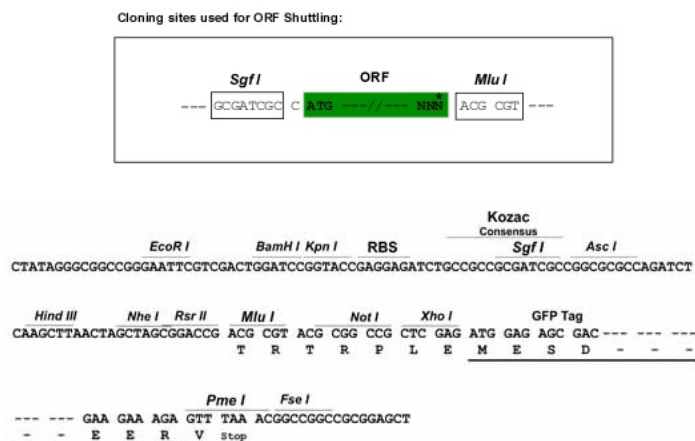
>RG205708 representing NM_020376
 Red=Cloning site Green=Tags(s)

MFPREKTWNISFAGCGFLGVYVGVASCLREHAPFLVANATHIYGASAGALTATALVTGVCLGEAGAKFI
 EVSKEARKRFLGPLHPSFNLVKIIRSFLLKVLPAJSHEHASGRLGISLTRVSDGENVIIISHFNSKDELIQ
 ANVCSGFIPVYCGLIPPSLQGVRYVDGGISDNLPLYELKNTITVSPFSGESDIPQDSSTNIHELVTNT
 SIQFNLRNLRYLSKALFPPEPLVLRMCKQGYRDGLRFLQRNGLLRPNPLLALPPARPHGPEDKQAVE
 SAQAEDYSQPLPGEDHILEHLPARLNEALLEACVEPTDLLTTL SNMLPVRLATAMMVPTLPLESALSFTI
 RLLEWLPDVPEDIRWMKEQTGSICQYLVMRAKRLGRHLP SRLPEQVELRRVQSLPSVPLSAAAYREALP
 GWMRNLSLGDALAKWEECQRQLLLGLFCTNVAFPEALRMRAPADPAPADPASPQHLAGPAPLLST
 PAPEARPVIGALGL

TRTRPLE – GFP Tag – V

Restriction Sites:

Sgfl-MluI

Cloning Scheme:


ACCN: NM_020376

ORF Size: 1512 bp

OTI Disclaimer: The molecular sequence of this clone aligns with the gene accession number as a point of reference only. However, individual transcript sequences of the same gene can differ through naturally occurring variations (e.g. polymorphisms), each with its own valid existence. This clone is substantially in agreement with the reference, but a complete review of all prevailing variants is recommended prior to use. [More info](#)

OTI Annotation: This clone was engineered to express the complete ORF with an expression tag. Expression varies depending on the nature of the gene.

Components: The ORF clone is ion-exchange column purified and shipped in a 2D barcoded Matrix tube containing 10ug of transfection-ready, dried plasmid DNA (reconstitute with 100 ul of water).

Reconstitution Method:

1. Centrifuge at 5,000xg for 5min.
2. Carefully open the tube and add 100ul of sterile water to dissolve the DNA.
3. Close the tube and incubate for 10 minutes at room temperature.
4. Briefly vortex the tube and then do a quick spin (less than 5000xg) to concentrate the liquid at the bottom.
5. Store the suspended plasmid at -20°C. The DNA is stable for at least one year from date of shipping when stored at -20°C.

RefSeq: [NM_020376.2](#), [NP_065109.1](#)

RefSeq Size: 2113 bp

RefSeq ORF: 1515 bp

Locus ID: 57104

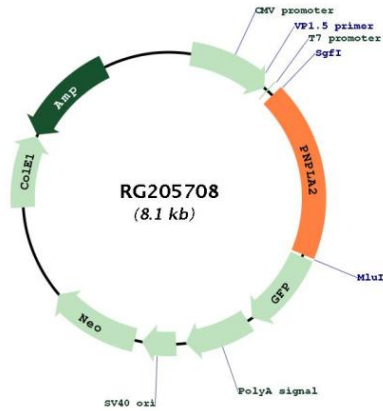
UniProt ID: [Q96AD5](#)

Cytogenetics: 11p15.5

Protein Families: Transmembrane

Gene Summary: This gene encodes an enzyme which catalyzes the first step in the hydrolysis of triglycerides in adipose tissue. Mutations in this gene are associated with neutral lipid storage disease with myopathy. [provided by RefSeq, Jul 2010]

Product images:



Circular map for RG205708