

Product datasheet for **RG205653**

C1QA (NM_015991) Human Tagged ORF Clone

Product data:

Product Type: Expression Plasmids
Product Name: C1QA (NM_015991) Human Tagged ORF Clone
Tag: TurboGFP
Symbol: C1QA
Mammalian Cell Selection: Neomycin
Vector: pCMV6-AC-GFP (PS100010)
E. coli Selection: Ampicillin (100 ug/mL)
ORF Nucleotide Sequence: >RG205653 representing NM_015991
 Red=Cloning site Blue=ORF Green=Tags(s)

TTTTGTAATACGACTCACTATAGGGCGGCCGGGAATTCGTCGACTGGATCCGGTACCGAGGAGATCTGCC
 GCC**CGATCGCC**

ATGGAGGGTCCCCGGGATGGCTGGTGCTCTGTGTGCTGGCCATATCGCTGGCCTCTATGGTGACCGAGG
 ACTTGTGCCGAGCACCAGACGGGAAGAAAGGGGAGGCAGGAAGACCTGGCAGACGGGGCCGAGCCAGGCT
 CAAGGGGGAGCAAGGGGAGCCGGGGGCCCTGGCATCCGGACAGGCATCCAAGGCCTTAAGGAGACCAG
 GGGGAACCTGGGCCCTCTGGAACCCCGCAAGGTGGCTACCCAGGGCCAGCGGCCCTCGGGGCC
 GTGGCATCCCAGGAATTAAGGCACCAAGGCCAGCCAGGAAACATCAAGGACCAGCCAGGCCAGCCTT
 CTCGCCATTCGGCGGAACCCCAATGGGGGCAACGTGGTCACTCTCGACACGGTCATCACCAACCAG
 GAAGAACCGTACCAGAACCCTCCGCCGATTCGTCTGCACTGTACCCGGCTACTACTACTTCACCTTCC
 AGGTGCTGTCCCAGTGGGAAATCTGCCTGTCCATCGTCTCCTCCTCAAGGGGCCAGGTCCGACGCTCCCT
 GGGCTTCTGTGACACCACCAACAAGGGCTCTTCCAGGTGGTGTGAGGGGCATGGTGCTTCAGCTGCAG
 CAGGGTGACCAGGTCTGGGTTGAAAAAGACCCCAAAAAGGGTCACATTTACCAGGGCTCTGAGGCCGACA
 GCGTCTCAGCGGCTTCCATCTCCATCTGCC

ACGCGTACGCGGCCGCTCGAG - GFP Tag - GTTTAA

Protein Sequence: >RG205653 representing NM_015991
 Red=Cloning site Green=Tags(s)

MEGPRGWLVLVLAISLASMVTEDLCRAPDGKKGEGRRRGRPLKGEQGEPPGAPGIRTIQGLKGDQ
 GEPGSGNPGKVGYPGSPGLGARGIPGIKGTGSPGNIKDQPRPAFSAIRRNPPMGGNVVIFDVTITNQ
 EEPYQNHSGRFVCTVPGYYYFTFQVLSQWEICLSIVSSSRGQVRRSLGFCDTTNKGLFQVVSQGMVLQLQ
 QGDQVWVEKDPKKGHIYQGEADSVFSGFLIFPSA

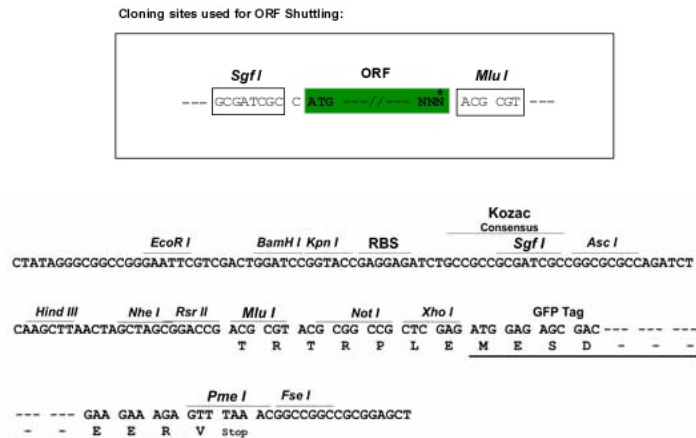
TRTRPLE - GFP Tag - V



[View online »](#)

Restriction Sites: SgfI-MluI

Cloning Scheme:



ACCN: NM_015991

ORF Size: 735 bp

OTI Disclaimer: The molecular sequence of this clone aligns with the gene accession number as a point of reference only. However, individual transcript sequences of the same gene can differ through naturally occurring variations (e.g. polymorphisms), each with its own valid existence. This clone is substantially in agreement with the reference, but a complete review of all prevailing variants is recommended prior to use. [More info](#)

OTI Annotation: This clone was engineered to express the complete ORF with an expression tag. Expression varies depending on the nature of the gene.

Components: The ORF clone is ion-exchange column purified and shipped in a 2D barcoded Matrix tube containing 10ug of transfection-ready, dried plasmid DNA (reconstitute with 100 ul of water).

Reconstitution Method:

1. Centrifuge at 5,000xg for 5min.
2. Carefully open the tube and add 100ul of sterile water to dissolve the DNA.
3. Close the tube and incubate for 10 minutes at room temperature.
4. Briefly vortex the tube and then do a quick spin (less than 5000xg) to concentrate the liquid at the bottom.
5. Store the suspended plasmid at -20°C. The DNA is stable for at least one year from date of shipping when stored at -20°C.

RefSeq: [NM_015991.1](#), [NP_057075.1](#)

RefSeq Size: 1098 bp

RefSeq ORF: 738 bp

Locus ID: 712

UniProt ID: [P02745](#)

Cytogenetics: 1p36.12

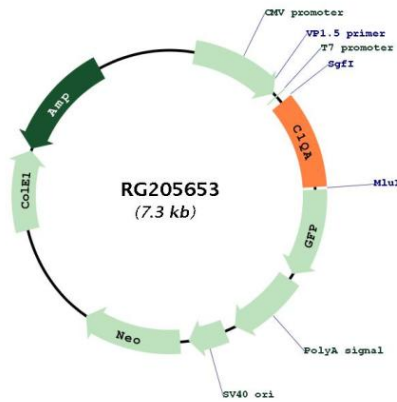
Domains: C1Q, Collagen

Protein Families: Secreted Protein

Protein Pathways: Complement and coagulation cascades, Prion diseases, Systemic lupus erythematosus

Gene Summary: This gene encodes the A-chain polypeptide of serum complement subcomponent C1q, which associates with C1r and C1s to yield the first component of the serum complement system. C1q deficiency is associated with lupus erythematosus and glomerulonephritis. C1q is composed of 18 polypeptide chains which include 6 A-chains, 6 B-chains, and 6 C-chains. Each chain contains an N-terminal collagen-like region and a C-terminal C1q globular domain. Alternate splicing results in multiple transcript variants. [provided by RefSeq, Nov 2016]

Product images:



Circular map for RG205653