

Product datasheet for **RG205647**

RAB24 (NM_001031677) Human Tagged ORF Clone

Product data:

Product Type: Expression Plasmids
Product Name: RAB24 (NM_001031677) Human Tagged ORF Clone
Tag: TurboGFP
Symbol: RAB24
Mammalian Cell Selection: Neomycin
Vector: pCMV6-AC-GFP (PS100010)
E. coli Selection: Ampicillin (100 ug/mL)
ORF Nucleotide Sequence: >RG205647 representing NM_001031677
 Red=Cloning site Blue=ORF Green=Tags(s)

TTTTGTAATACGACTCACTATAGGGCGGCCGGAATTCGTCGACTGGATCCGGTACCGAGGAGATCTGCC
 GCC**CGATCGCC**

ATGAGCGGGCAGCGCGTGGACGTCAAGGTGGTGTGCTGGGCAAGGAGTACGTGGGCAAGACTAGCCTGG
 TGGAGCGCTACGTGCACGACCGCTTTCTGGTGGGGCCTTATCAGAACCACCATCGGGGCCGCTTCGTGGC
 CAAGGTGATGTCGGTCCGAGACCGGACTGTGACATTAGGTATTTGGGACACAGCAGGCTCTGAGCGCTAT
 GAGGCCATGAGTAGAATCTACTATCGGGGTGCCAAGGCTGCCATCGTCTGCTATGACCTCACAGACAGCA
 GCAGCTTTGAGCGAGCAAAGTTCTGGGTGAAGGAAGTCCGACGCTAGAGGAGGGCTGCCAAATCTACTT
 ATGTGGCACCAAGAGTGACCTGCTGGAAGAAGACCGGAGGCGTGCACGTGTGGACTTCCACGACGTCCAG
 GACTATGCAGACAATATCAAAGCTCAGCTCTTTGAAACATCCAGCAAGACAGGCCAGAGTGTGGACGAGC
 TCTTCCAGAAAGTGGCAGAGGATTACGTCAAGTGTGGTGCCTTCCAGGTGATGACAGAGGACAAGGGCGT
 GGATCTGGGCCAGAAGCCAAACCCTACTTCTACAGCTGTTGTCATCAC

ACGCGTACGCGGCCGCTCGAG - GFP Tag - GTTTAA

Protein Sequence: >RG205647 representing NM_001031677
 Red=Cloning site Green=Tags(s)

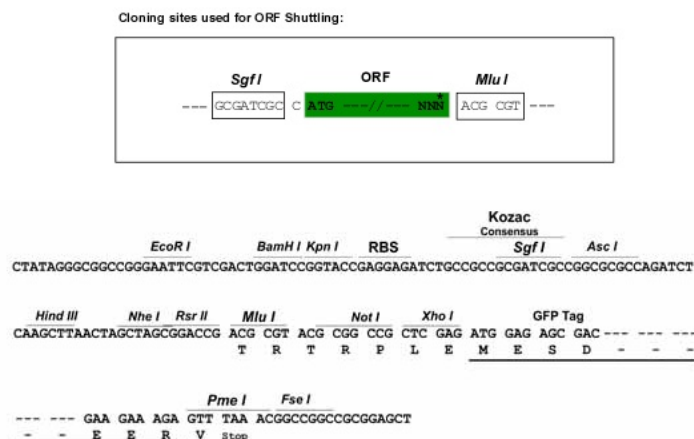
MSGQRVDVKVVMLGKEYVGKTSLVERYVHDRFLVGPYQNTIGAAFVAKVMSVGDRTVTLGIWDTAGSERY
 EAMSRIYYRGAKAAIVCYDLTDSSSFERAKFWVKELRSLEEGCQIYLCGTSKSDLLEEDRRRRRVDFHDVQ
 DYADNIKAQLFETSSKTGQSVDEL FQKVAEDYVSVAAFQVMTEDKGVDLGGKPNPYFYSCCHH

TRTRPLE - GFP Tag - V

Restriction Sites: SgfI-MluI



[View online »](#)

Cloning Scheme:


ACCN: NM_001031677

ORF Size: 609 bp

OTI Disclaimer: The molecular sequence of this clone aligns with the gene accession number as a point of reference only. However, individual transcript sequences of the same gene can differ through naturally occurring variations (e.g. polymorphisms), each with its own valid existence. This clone is substantially in agreement with the reference, but a complete review of all prevailing variants is recommended prior to use. [More info](#)

OTI Annotation: This clone was engineered to express the complete ORF with an expression tag. Expression varies depending on the nature of the gene.

Components: The ORF clone is ion-exchange column purified and shipped in a 2D barcoded Matrix tube containing 10ug of transfection-ready, dried plasmid DNA (reconstitute with 100 ul of water).

Reconstitution Method:

1. Centrifuge at 5,000xg for 5min.
2. Carefully open the tube and add 100ul of sterile water to dissolve the DNA.
3. Close the tube and incubate for 10 minutes at room temperature.
4. Briefly vortex the tube and then do a quick spin (less than 5000xg) to concentrate the liquid at the bottom.
5. Store the suspended plasmid at -20°C. The DNA is stable for at least one year from date of shipping when stored at -20°C.

RefSeq: [NM_001031677.4](#)

RefSeq Size: 1612 bp

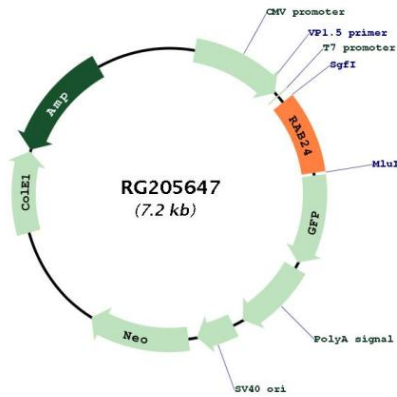
RefSeq ORF: 612 bp

Locus ID: 53917

UniProt ID: [Q969Q5](#)

Cytogenetics: 5q35.3
Protein Families: Druggable Genome
Gene Summary: RAB24 is a small GTPase of the Rab subfamily of Ras-related proteins that regulate intracellular protein trafficking (Olikkonen et al., 1993 [PubMed 8126105]).[supplied by OMIM, Aug 2009]

Product images:



Circular map for RG205647