

Product datasheet for **RG205641**

CDC25C (NM_001790) Human Tagged ORF Clone

Product data:

Product Type:	Expression Plasmids
Product Name:	CDC25C (NM_001790) Human Tagged ORF Clone
Tag:	TurboGFP
Symbol:	CDC25C
Synonyms:	CDC25; PPP1R60
Mammalian Cell Selection:	Neomycin
Vector:	pCMV6-AC-GFP (PS100010)
E. coli Selection:	Ampicillin (100 ug/mL)



[View online »](#)

ORF Nucleotide Sequence:

>RG205641 representing NM_001790
 Red=Cloning site Blue=ORF Green=Tags(s)

TTTTGTAATACGACTCACTATAGGGCGGCCGGAATTCGTCGACTGGATCCGGTACCGAGGAGATCTGCC
 GCC**CGATCGCC**

ATGTCTACGGAAGCTTTCTCATCCACAAGAGAGGAAGGAAGCTCTGGCTCAGGACCCAGTTTATAGTCTA
 ATCAAAGGAAAAATGTTAAACCTGCTCCTGGAGAGAGACACTTCCTTTACGCTCTGTCAGATGTCCCTAG
 AACTCCAGTGGGCAAATTTCTTGGTGATTCTGCAAACCTAAGCATTGTCTGGAGGAACCCAAAATGT
 TGCTCGATCTTTGCAATCTTAGCAGTGGGAGATAAAGTCCACTCAGCTTACCCTTCTGCAGACCTTG
 ATGAAACTGGTCACCTGGATTCTCAGGACTTCAGGAAGTGCATTTAGCTGGGATGAATCATGACCAGCA
 CCTAATGAAATGTAGCCAGCACAGCTTCTTTGTAGCACTCCGAATGGTTTGGACCGTGGCCATAGAAAAG
 AGAGATGCAATGTGTAGTTCATCTGCAAATAAAGAAAAATGACAATGAAACTTGGTGACAGTGAATGA
 AATATTTGGGCAGTCCCATTACTACTGTCCAAAATTGGATAAAAATCCAAACCTAGGAGAAGACCAGGC
 AGAAGAGATTTTCAGATGAATTAATGGAGTTTTCCCTGAAAGATCAAGAAGCAAAGGTGAGCAGAAGTGGC
 CTATATCGCTCCCGTGCATGCCAGAGAACTTGAACAGGCCAAGACTGAAGCAGGTGAAAAAATCAAGG
 ACAACACAATACCAGATAAAGTTAAAAAAAAGTATTTTTCTGGCCAAGGAAAGCTCAGGAAGGGCTATG
 TTTAAAGAAGACAGTCTCTGTGTGACATTACTATCACTCAGATGCTGGAGGAAGATTCTAACCAGGGG
 CACCTGATTGGTGATTTTTCCAAGGATGTGCGCTGCCAACCGTGTGAGGAAACACCAAGATCTGAAGT
 ATGTCAACCCAGAAACAGTGGCTGCCTACTGTGCGGGAAAGTCCAGGGTCTGATTGAGAAGTTTTATGT
 CATTGATTGTGCGTATCCATATGAGTATCTGGGAGGACACATCCAGGGAGCCTTAACTTATATAGTCAG
 GAAGAAGTGTAACTTCTTTCTGAAGAAGCCCATCGTCCCTTTGGACACCCAGAAGAGAATAATCATCG
 GTTCCACTGTGAATTCCTCAGAGAGGGGCCCCGAATGTGCGCTGTCTGCGTGAAGAGGACAGGTC
 TCTGAACCAAGTATCCTGCAATGTACTACCCAGAGCTATATATCCTTAAAGGCGGCTACAGAGACTTCTTT
 CCAGAATATATGAACTGTGTGAACACAGAGCTACTGCCCTATGCATCATCAGGACCACAGACTGAGT
 TGCTGAGGTGTCGAAGCCAGAGCAAAGTGCAGGAAGGGGAGCGGCAGCTGCGGGAGCAGATTGCCCTTCT
 GGTGAAGGACATGAGCCCA

ACGCGTACGCGGCCGCTCGAG – GFP Tag – GTTTAA

Protein Sequence:

>RG205641 representing NM_001790
 Red=Cloning site Green=Tags(s)

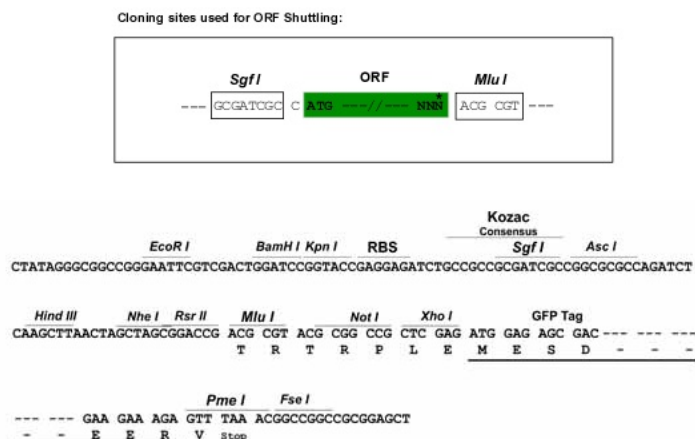
MSTELFSSTREEGSSGSGPSFRSNQRKMLNLLERDTSFTVCPDVPRTPVGKFLGDSANLSILSGGTPKC
 CLDLSNLSSGEITATQLTTSADLDETHLDSGLQEVHLAGMNHQHLMKCSPAQLL CSTPNGLDRGHRK
 RDAMCSSANKENDNGNLVDSEMKYLGSPITTVPKLDKNPNLGEDQAEESI SDELMFSLKDQEAIVSRSG
 LYRSPSPENLNRPRKQVEKFKDNTIPDKVKKKYFSGQGKLRKGLCLKKTVSLCDITITQMLEEDSNQG
 HLIIGDFSKVCALPTVSGKHQDLKYVNPETVAALLSGKFQGLIEKFYVIDCRYPYELGGHIQGALNLYSQ
 EELFNFFLKKPIVPLDTQKRIIIVFHCFSSERGRMCRCLREEDRSLNQYPALYYPELYILKGGYRDF
 PEYMELCEPQSYCPMHHQDHKTELLRCSRQSKVQEGERQLREQIALLVKDMSP

TRTRPLE – GFP Tag – V

Restriction Sites:

Sgfl-MluI

Cloning Scheme:



ACCN: NM_001790

ORF Size: 1419 bp

OTI Disclaimer: The molecular sequence of this clone aligns with the gene accession number as a point of reference only. However, individual transcript sequences of the same gene can differ through naturally occurring variations (e.g. polymorphisms), each with its own valid existence. This clone is substantially in agreement with the reference, but a complete review of all prevailing variants is recommended prior to use. [More info](#)

OTI Annotation: This clone was engineered to express the complete ORF with an expression tag. Expression varies depending on the nature of the gene.

Components: The ORF clone is ion-exchange column purified and shipped in a 2D barcoded Matrix tube containing 10ug of transfection-ready, dried plasmid DNA (reconstitute with 100 ul of water).

Reconstitution Method:

1. Centrifuge at 5,000xg for 5min.
2. Carefully open the tube and add 100ul of sterile water to dissolve the DNA.
3. Close the tube and incubate for 10 minutes at room temperature.
4. Briefly vortex the tube and then do a quick spin (less than 5000xg) to concentrate the liquid at the bottom.
5. Store the suspended plasmid at -20°C. The DNA is stable for at least one year from date of shipping when stored at -20°C.

RefSeq: [NM_001790.2](#), [NP_001781.1](#)

RefSeq Size: 2115 bp

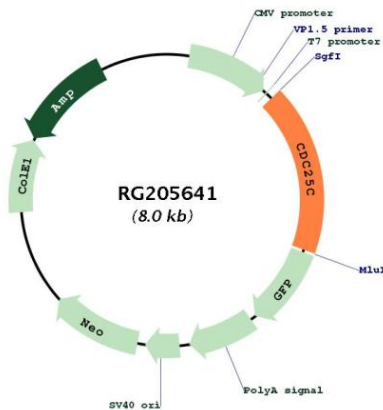
RefSeq ORF: 1422 bp

Locus ID: 995

UniProt ID: [P30307](#)

Cytogenetics:	5q31.2
Domains:	RHOD
Protein Families:	Druggable Genome, Phosphatase, Stem cell - Pluripotency
Protein Pathways:	Cell cycle, Oocyte meiosis, Progesterone-mediated oocyte maturation
Gene Summary:	This gene encodes a conserved protein that plays a key role in the regulation of cell division. The encoded protein directs dephosphorylation of cyclin B-bound CDC2 and triggers entry into mitosis. It also suppresses p53-induced growth arrest. Multiple alternatively spliced transcript variants of this gene have been described. [provided by RefSeq, Dec 2015]

Product images:



Circular map for RG205641