

## Product datasheet for **RG205638**

### RPS6 (NM\_001010) Human Tagged ORF Clone

#### Product data:

Product Type: Expression Plasmids  
 Product Name: RPS6 (NM\_001010) Human Tagged ORF Clone  
 Tag: TurboGFP  
 Symbol: RPS6  
 Synonyms: S6  
 Mammalian Cell Selection: Neomycin  
 Vector: pCMV6-AC-GFP (PS100010)  
 E. coli Selection: Ampicillin (100 ug/mL)  
 ORF Nucleotide Sequence: >RG205638 representing NM\_001010  
 Red=Cloning site Blue=ORF Green=Tags(s)

TTTTGTAATACGACTCACTATAGGGCGGCCGGAATTCGTCGACTGGATCCGGTACCGAGGAGATCTGCC  
 GCC**CGATCGCC**

ATGAAGCTGAACATCTCCTTCCCAGCCACTGGCTGCCAGAACTCATTGAAGTGGACGTGAACGCCAAAC  
 TTCGTACTTTCTATGAGAAGCGTATGGCCACAGAAGTTGCTGCTGACGCTCTGGTGAAGAATGGAAGGG  
 TTATGTGGTCCGAATCAGTGGTGGGAACGACAAACAAGTTTCCCATGAAGCAGGGTGTCTTGACCCAT  
 GGCCGTGTCCGCCTGCTACTGAGTAAGGGGCATTCCTGTTACAGACCAAGGAGAACTGGAGAAAGAAAGA  
 GAAAATCAGTTTCGTGGTTGCATTGTGGATGCAAACTCTGAGCGTTCTCACTTGGTTATTGTAAGAAAAGG  
 AGAGAAGGATATTCCTGGACTGACTGATACTACAGTGCCTCGCCGCTGGGCCAAAAGAGCTAGCAGA  
 ATCCGCAAACTTTTCAATCTCTCTAAAGAAGATGATGTCCGCCAGTATGTTGTAAGAAAAGCCCTTAATA  
 AAGAAGGTAAGAAACCTAGGACCAAGCACCCAAGATTCAGCGTCTTGTACTCCACGTGTCTGCGACGA  
 CAAACGGCGGCATTGCTCTGAAGAAGCAGCGTACCAAGAAAAATAAGAAAGAGGCTGCAGAATATGCT  
 AAATTTTGGCCAAGAGAATGAAGGAGGCTAAGGAGAAGCGCCAGGAACAAATTGCGAAGAGACGCGAC  
 TTTCTCTCTGCGAGCTTCTACTTCTAAGTCTGAATCCAGTCAGAAA

**ACGCGT**ACGCGGCCGCTCGAG - GFP Tag - GTTTAA



[View online »](#)

**Protein Sequence:** >RG205638 representing NM\_001010  
 Red=Cloning site Green=Tags(s)

MKLNISFPATGCQKLIIEVDDERKLRTFYEKRMATEVAADALGEEWKGYVVRISGGNDKQGFPMKQGVLT  
 GRVRLLSKGHSCYRPRRTGERKRKSVRGCIVDANLSVLNLVIVKKGEKDIPGLTDTTVPRLGPKRASR  
 IRKLFNLKEDDVRQYVVRKPLNKEGKKPRTKAPKIQRLLVTPRVLQHKRRRIALKKQRTKKNKEAAEYA  
 KLLAKRMKEAKEKRQEIAKRRRLSSLRASTKSSESSQK

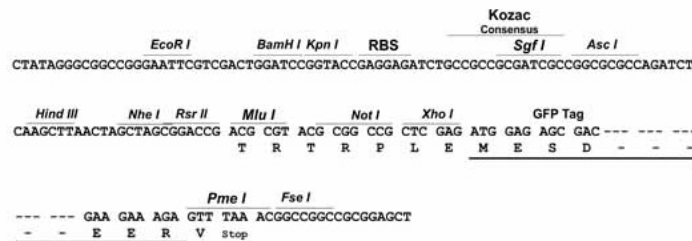
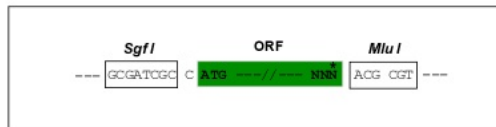
TRTRPLE - GFP Tag - V

**Chromatograms:** [https://cdn.origene.com/chromatograms/ja1757\\_c09.zip](https://cdn.origene.com/chromatograms/ja1757_c09.zip)

**Restriction Sites:** SgfI-MluI

**Cloning Scheme:**

Cloning sites used for ORF Shutting:



**ACCN:** NM\_001010

**ORF Size:** 747 bp

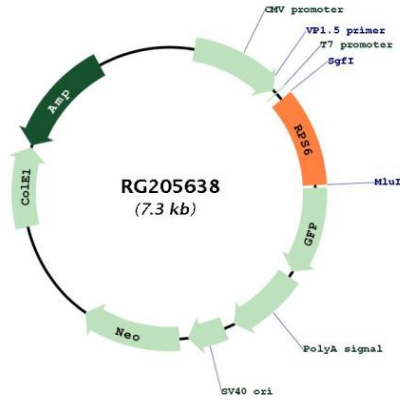
**OTI Disclaimer:** Due to the inherent nature of this plasmid, standard methods to replicate additional amounts of DNA in E. coli are highly likely to result in mutations and/or rearrangements. Therefore, OriGene does not guarantee the capability to replicate this plasmid DNA. Additional amounts of DNA can be purchased from OriGene with batch-specific, full-sequence verification at a reduced cost. Please contact our customer care team at [custsupport@origene.com](mailto:custsupport@origene.com) or by calling 301.340.3188 option 3 for pricing and delivery.

The molecular sequence of this clone aligns with the gene accession number as a point of reference only. However, individual transcript sequences of the same gene can differ through naturally occurring variations (e.g. polymorphisms), each with its own valid existence. This clone is substantially in agreement with the reference, but a complete review of all prevailing variants is recommended prior to use. [More info](#)

**OTI Annotation:** This clone was engineered to express the complete ORF with an expression tag. Expression varies depending on the nature of the gene.

<b>Components:</b>	The ORF clone is ion-exchange column purified and shipped in a 2D barcoded Matrix tube containing 10ug of transfection-ready, dried plasmid DNA (reconstitute with 100 ul of water).
<b>Reconstitution Method:</b>	<ol style="list-style-type: none"><li>1. Centrifuge at 5,000xg for 5min.</li><li>2. Carefully open the tube and add 100ul of sterile water to dissolve the DNA.</li><li>3. Close the tube and incubate for 10 minutes at room temperature.</li><li>4. Briefly vortex the tube and then do a quick spin (less than 5000xg) to concentrate the liquid at the bottom.</li><li>5. Store the suspended plasmid at -20°C. The DNA is stable for at least one year from date of shipping when stored at -20°C.</li></ol>
<b>RefSeq:</b>	<a href="#">NM_001010.3</a>
<b>RefSeq Size:</b>	829 bp
<b>RefSeq ORF:</b>	750 bp
<b>Locus ID:</b>	6194
<b>UniProt ID:</b>	<a href="#">P62753</a>
<b>Cytogenetics:</b>	9p22.1
<b>Domains:</b>	Ribosomal_S6e
<b>Protein Pathways:</b>	Insulin signaling pathway, mTOR signaling pathway, Ribosome
<b>Gene Summary:</b>	Ribosomes, the organelles that catalyze protein synthesis, consist of a small 40S subunit and a large 60S subunit. Together these subunits are composed of 4 RNA species and approximately 80 structurally distinct proteins. This gene encodes a cytoplasmic ribosomal protein that is a component of the 40S subunit. The protein belongs to the S6E family of ribosomal proteins. It is the major substrate of protein kinases in the ribosome, with subsets of five C-terminal serine residues phosphorylated by different protein kinases. Phosphorylation is induced by a wide range of stimuli, including growth factors, tumor-promoting agents, and mitogens. Dephosphorylation occurs at growth arrest. The protein may contribute to the control of cell growth and proliferation through the selective translation of particular classes of mRNA. As is typical for genes encoding ribosomal proteins, there are multiple processed pseudogenes of this gene dispersed through the genome. [provided by RefSeq, Jul 2008]

Product images:



Circular map for RG205638