

## Product datasheet for **RG205610**

### ARL15 (NM\_019087) Human Tagged ORF Clone

#### Product data:

**Product Type:** Expression Plasmids  
**Product Name:** ARL15 (NM\_019087) Human Tagged ORF Clone  
**Tag:** TurboGFP  
**Symbol:** ARL15  
**Synonyms:** ARFRP2  
**Mammalian Cell Selection:** Neomycin  
**Vector:** pCMV6-AC-GFP (PS100010)  
**E. coli Selection:** Ampicillin (100 ug/mL)  
**ORF Nucleotide Sequence:** >RG205610 representing NM\_019087  
 Red=Cloning site Blue=ORF Green=Tags(s)

TTTTGTAATACGACTCACTATAGGGCGCCGGGAATTCGTCGACTGGATCCGGTACCGAGGAGATCTGCC  
 GCC**CGATCGCC**

ATGTCTGATCTCCGGATAACTGAGGCGTTTCTGTACATGGATTATCTGTGTTTTAGAGCACTTTGCTGCA  
 AGGGACCACCACCTGCACGACCAGAATATGACCTGGTTTGCATAGGCCTCACAGGTTCTGGCAAACCCAG  
 TCTGTTGTCCAACTCTGCAGTAAAGCCCGATAACGTCGTGTCGACCACAGGTTTTAGTATTAAGCA  
 GTGCCATTCCAGAATGCCATCTGAATGTAAGAAGAACTGGAGGGGCTGATAACATCCGAAATACTGGA  
 GCCGCTACTACCAAGGATCTCAAGGGTAATATTTGTATTAGACAGTGCCTCTTCAGAGGATGATTTAGA  
 AGCTGCTAGAAATGAGCTGCACTCAGCTCTTCAGCATCCACAGTTATGCACTTTACCTTTTTAATATTG  
 GCCAATCATCAAGACAAGCCAGCAGCTCGCTCAGTACAAGAGATCAAAAAATATTTGAACCTTGAACCAC  
 TTGCACGTGAAAACGCTGGATTCTACAGCCCTGCTCACTGGATGACATGGATGCCTGAAAGACAGCTT  
 CTCTCAGCTGATTAATTTGTTAGAAGAAAAGACCATGAAGCTGTAAGAATG

**ACGCGTACGCGGCCGCTCGAG** - GFP Tag - GTTTAA

**Protein Sequence:** >RG205610 representing NM\_019087  
 Red=Cloning site Green=Tags(s)

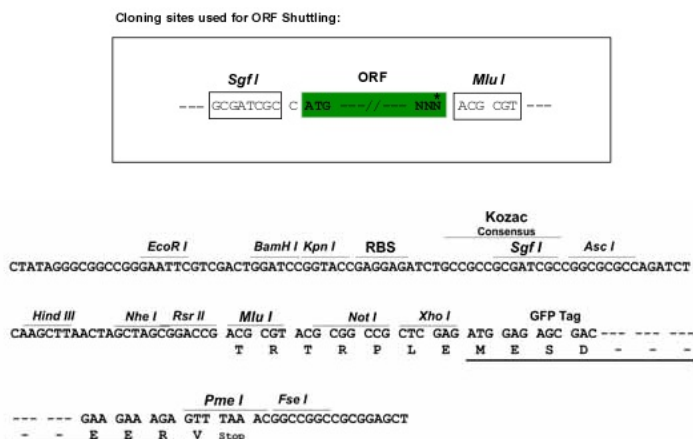
MSDLRITEAFLYMDYLCFRALCCKGPPPARPEYDLVCIGLTGSGKTSLLSKLCSSEPDNVVSTTGFSIKA  
 VPFQNAILNVKELGGADNIRKYWSRYQGSQGVIFVLDSASSEDDLEAARNELHSALQHPQLCTLPLFLIL  
 ANHQDKPAARSVQEIKKYFELEPLARGKRWILQPCSLDDMDALKDSFSQLINLLEEKDHEAVRM

**TRTRPLE** - GFP Tag - V

**Restriction Sites:** Sgfl-MluI



[View online »](#)

**Cloning Scheme:**


**ACCN:** NM\_019087

**ORF Size:** 612 bp

**OTI Disclaimer:** The molecular sequence of this clone aligns with the gene accession number as a point of reference only. However, individual transcript sequences of the same gene can differ through naturally occurring variations (e.g. polymorphisms), each with its own valid existence. This clone is substantially in agreement with the reference, but a complete review of all prevailing variants is recommended prior to use. [More info](#)

**OTI Annotation:** This clone was engineered to express the complete ORF with an expression tag. Expression varies depending on the nature of the gene.

**Components:** The ORF clone is ion-exchange column purified and shipped in a 2D barcoded Matrix tube containing 10ug of transfection-ready, dried plasmid DNA (reconstitute with 100 ul of water).

**Reconstitution Method:**

1. Centrifuge at 5,000xg for 5min.
2. Carefully open the tube and add 100ul of sterile water to dissolve the DNA.
3. Close the tube and incubate for 10 minutes at room temperature.
4. Briefly vortex the tube and then do a quick spin (less than 5000xg) to concentrate the liquid at the bottom.
5. Store the suspended plasmid at -20°C. The DNA is stable for at least one year from date of shipping when stored at -20°C.

**RefSeq:** [NM\\_019087.1](#), [NP\\_061960.1](#)

**RefSeq Size:** 2501 bp

**RefSeq ORF:** 615 bp

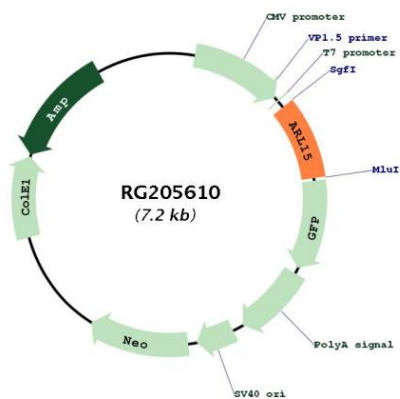
**Locus ID:** 54622

**UniProt ID:** [Q9NXU5](#)

**Cytogenetics:** 5q11.2

Domains: SAR, ARF, arf

**Product images:**



Circular map for RG205610