

Product datasheet for **RG205587**

ABHD13 (NM_032859) Human Tagged ORF Clone

Product data:

Product Type:	Expression Plasmids
Product Name:	ABHD13 (NM_032859) Human Tagged ORF Clone
Tag:	TurboGFP
Symbol:	ABHD13
Synonyms:	bA153I24.2; BEM46L1; C13orf6
Mammalian Cell Selection:	Neomycin
Vector:	pCMV6-AC-GFP (PS100010)
E. coli Selection:	Ampicillin (100 ug/mL)
ORF Nucleotide Sequence:	>RG205587 representing NM_032859 Red=Cloning site Blue=ORF Green=Tags(s)

TTTTGTAATACGACTCACTATAGGGCGGCCGGAATTCGTCGACTGGATCCGGTACCGAGGAGATCTGCC
GCC**CGATCGCC**

ATGAAAAAGTCCTGGATGCTGTGGAACCTTTGTTGAAAGATGGCTAATAGCCTTGGCTTCATGGTCTTGGG
CTCTCTGCCGATTTCTCTTTTACCTTTAATAGTGACTTTTCATCTGTATGGAGGCATTATCTTACTTTT
GTTAATATTCATATCAATAGCAGGTATTCTGTATAAATCCAGGATGATTGCTTTATTTCCAGAACAG
CCATCCTCTTCAGTCTTATGTTCCCATGCCACTGGCATTCCACATGAAAACATTTTCATCAGAACCA
AAGATGGAATACGTCTGAATCTTATTTTGATACGATACACTGGAGACAATTCACCCTATTCCTCAACTAT
AATTTATTTTCATGGGAATGCAGGCAACATAGGTCACAGGTTGCCAATGCATTACTTATGTTGGTTAAC
CTCAAAGTTAACCTTTTCTGCTGGTTGATTATCGAGGATATGGAAAAAGTGAAGGAGAAGCAAGTGAAGAAG
GACTCTACTTAGATTCTGAAGCTGTGTTAGACTACGTGATGACTAGACCTGACCTTGATAAAAAAAAAT
TTTTCTTTTGGCCGTTCTTGGGTGGAGCAGTGGCTATTCATTTGGCTTCTGAAAATTCACATAGGATT
TCAGCCATTATGGTGGAGAACACATTTTAAGCATACCACATATGGCCAGCACTTTATTTTCATTCTTTC
CGATGCGTTACCTTCCTTATGGTGCTACAAAAATAAATTTTGTCTACAGAAAAATCTCTCAGTGTAG
AATGCCTTCACTTTTCATCTCTGGACTCTCAGATCAATTAATCCACCAGTAATGATGAAACAACCTTTAT
GAACTCCTCCATCTCGGACTAAGAGATTAGCCATTTTCCAGATGGGACTCACAATGACACATGGCAGT
GCCAAGGCTATTTCACTGCACTTGAACAGTTCATCAAAGAAGTCGTAAGAGCCATTCTCCTGAAGAAAT
GGCAAAAACCTTCATCTAATGTAACAATTATA

ACGCGTACGCGGCCGCTCGAG - GFP Tag - GTTTAA



[View online »](#)

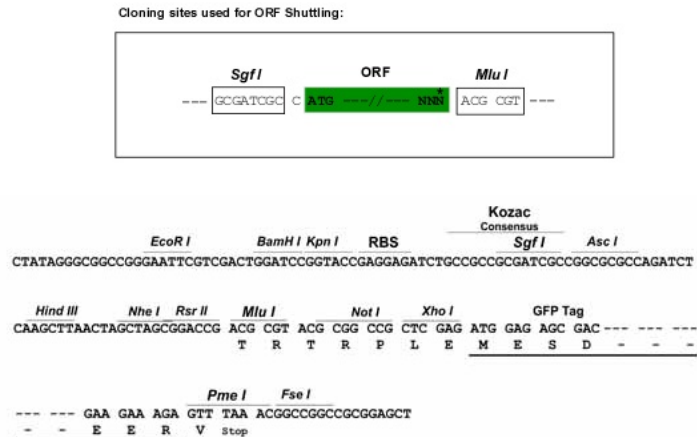
Protein Sequence: >RG205587 representing NM_032859
Red=Cloning site Green=Tags(s)

MEKSWMLWNFVERWLIALASWSWALCRISLLPLIVTFHLYGGIILLLLIFISIAGILYKFQDVLVYFPEQ
 PSSSRLYVPMPTGIPHENIFIRTKDGIRLNLILIRYTGDNPSYPTIIYFHGNAGNIGHRLPNALLMLVN
 LKVNLLLVDYRGYKSEGEASEEGLYLDSEAVLDYVMTRPDLDKTKIFLFGRLGGAVAIHLASENSHRI
 SAIMVENTFLSIPHMASTLFSFFPMRYLPLWCYKNKFLSYRKISQCRMPSLFISGLSDQLIPPVMMKQLY
 ELSPSRTRKRLAIFPDGTHNDTWQCQGYFTALEQFIKEVVKSHSPEEMAKTSSNVTII

TRTRPLE - GFP Tag - V

Restriction Sites: SgfI-MluI

Cloning Scheme:



ACCN: NM_032859

ORF Size: 1011 bp

OTI Disclaimer: The molecular sequence of this clone aligns with the gene accession number as a point of reference only. However, individual transcript sequences of the same gene can differ through naturally occurring variations (e.g. polymorphisms), each with its own valid existence. This clone is substantially in agreement with the reference, but a complete review of all prevailing variants is recommended prior to use. [More info](#)

OTI Annotation: This clone was engineered to express the complete ORF with an expression tag. Expression varies depending on the nature of the gene.

Components: The ORF clone is ion-exchange column purified and shipped in a 2D barcoded Matrix tube containing 10ug of transfection-ready, dried plasmid DNA (reconstitute with 100 ul of water).

Reconstitution Method:

1. Centrifuge at 5,000xg for 5min.
2. Carefully open the tube and add 100ul of sterile water to dissolve the DNA.
3. Close the tube and incubate for 10 minutes at room temperature.
4. Briefly vortex the tube and then do a quick spin (less than 5000xg) to concentrate the liquid at the bottom.
5. Store the suspended plasmid at -20°C. The DNA is stable for at least one year from date of shipping when stored at -20°C.

RefSeq: [NM_032859.3](#)

RefSeq Size: 5316 bp

RefSeq ORF: 1014 bp

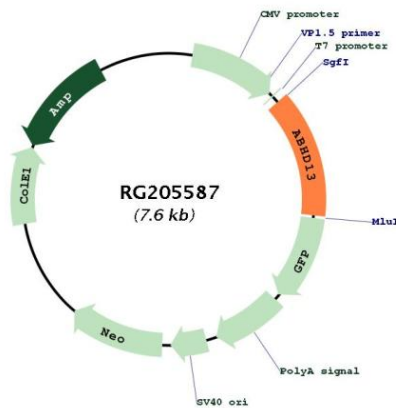
Locus ID: 84945

UniProt ID: [Q7L211](#)

Cytogenetics: 13q33.3

Protein Families: Protease, Transmembrane

Product images:



Circular map for RG205587