

Product datasheet for **RG205564**

TSSK6 (NM_032037) Human Tagged ORF Clone

Product data:

Product Type:	Expression Plasmids
Product Name:	TSSK6 (NM_032037) Human Tagged ORF Clone
Tag:	TurboGFP
Symbol:	TSSK6
Synonyms:	CT72; FKSG82; SSTK; TSSK4
Mammalian Cell Selection:	Neomycin
Vector:	pCMV6-AC-GFP (PS100010)
E. coli Selection:	Ampicillin (100 ug/mL)
ORF Nucleotide Sequence:	>RG205564 representing NM_032037 Red=Cloning site Blue=ORF Green=Tags(s)

TTTTGTAATACGACTCACTATAGGGCGGCCGGAATTCGTCGACTGGATCCGGTACCGAGGAGATCTGCC
GCC**CGATCGCC**

ATGTCGGGAGACAACTTCTGAGCGAACTCGTTATAAGCTGGGCCGACGATTGGAGAGGGCAGCTACT
CCAAGGTGAAGGTGGCCACATCCAAGAAGTACAAGGGTACCGTGGCCATCAAGGTGGTGGACCGGGCG
AGCGCCCCGGACTTCGTCAACAAGTTCCTGCCGCGAGAGCTGTCCATCCTCGGGGCGTGCACACCCG
CACATCGTGCACGTCTTCGAGTTCATCGAGGTGTGCAACGGGAACTGTACATCGTGATGGAAGCGGCCG
CCACCGACCTGCTGCAAGCCGTGCAGCGCAACGGGCGCATCCCCGGAGTTCAGGCGCGGACCTCTTTGC
GCAGATCGCCGGCGCCGTGCGCTACCTGCACGATCATCCTGGTGCACCGGACCTCAAGTGCGAAAAC
GTGCTGCTGAGCCCGGACGAGCGCCGCTCAAGCTCACCGACTTCGGCTTCGGCCGCCAGGCCATGGCT
ACCCAGACCTGAGCACCCTACTGCGGCTCAGCCGCTACGCGTCACCCGAGGTGCTCCTGGGCATCCC
CTACGACCCCAAGAAGTACGATGTGTGGAGCATGGGCGTCTGCTCTACGTATGGTACCCGGGTGCATG
CCCTTCGACGACTCGGACATCGCCGGCTGCCCGGCCAGAAACGCGGCGTCTATCCCGAAGGCC
TCGAGCTGTCCGAGCGCTGCAAGCCCTGATCGCCGAGCTGTGCAGTTCAGCCCGTCCGCCAGGCCCTC
CGCGGGCCAGGTAGCGCGCAACTGCTGGCTGCGCGCCGGGACTCCGGC

AGCGGACCGACGCGTACGCGCCGCTCGAG - GFP Tag - GTTTAA



[View online »](#)

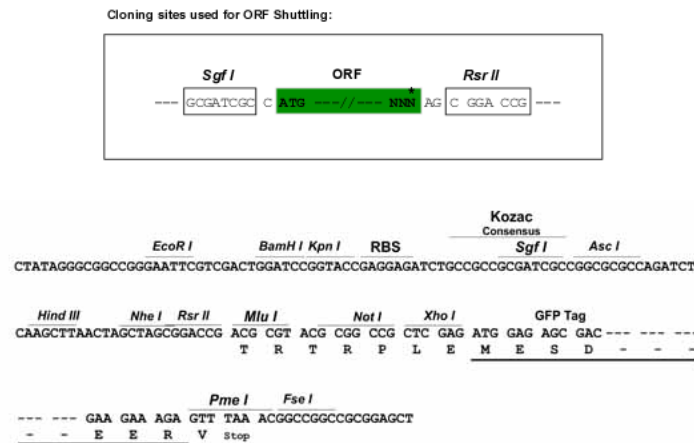
Protein Sequence: >RG205564 representing NM_032037
 Red=Cloning site Green=Tags(s)

MSGDKLLSELGYKLGRTIGEGSYSKVKVATSKKYKGTVAIKVVDRRRAPPDFVNKFLPRELSILRGVRHP
 HIVHVFEFIEVCNGKLYIVMEAAATDLLQAVQRNGRIPGVQARDLFAQIAGAVRYLHDHHLVHRDLKCEN
 VLLSPDERRVKLTDFGFRQAHGYPDLSSTTYCGSAAAYASPEVLLGIPYDPKKYDVMGMVLYVMVTGCM
 PFDDSDIAGLPRRQKRGVLYPEGLELSERCKALIAELLQFSPSARPSAGQVARNCWLRAGDSG

SGPTRRRLE - GFP Tag - V

Restriction Sites: SgfI-RsrII

Cloning Scheme:



ACCN: NM_032037

ORF Size: 819 bp

OTI Disclaimer: The molecular sequence of this clone aligns with the gene accession number as a point of reference only. However, individual transcript sequences of the same gene can differ through naturally occurring variations (e.g. polymorphisms), each with its own valid existence. This clone is substantially in agreement with the reference, but a complete review of all prevailing variants is recommended prior to use. [More info](#)

OTI Annotation: This clone was engineered to express the complete ORF with an expression tag. Expression varies depending on the nature of the gene.

Components: The ORF clone is ion-exchange column purified and shipped in a 2D barcoded Matrix tube containing 10ug of transfection-ready, dried plasmid DNA (reconstitute with 100 ul of water).

Reconstitution Method:

1. Centrifuge at 5,000xg for 5min.
2. Carefully open the tube and add 100ul of sterile water to dissolve the DNA.
3. Close the tube and incubate for 10 minutes at room temperature.
4. Briefly vortex the tube and then do a quick spin (less than 5000xg) to concentrate the liquid at the bottom.
5. Store the suspended plasmid at -20°C. The DNA is stable for at least one year from date of shipping when stored at -20°C.

RefSeq: [NM_032037.2](#), [NP_114426.1](#)

RefSeq Size: 1442 bp

RefSeq ORF: 822 bp

Locus ID: 83983

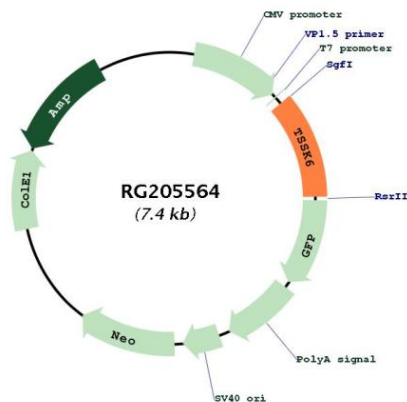
UniProt ID: [Q9BXA6](#)

Cytogenetics: 19p13.11

Protein Families: Druggable Genome, Protein Kinase

Gene Summary: This intronless gene encodes a member of the CAMK (calcium/calmodulin-dependent) serine/threonine protein kinase family. The encoded kinase has a broad expression pattern but is described as testis-specific due to effects on fertility. Male mice which lack the gene encoding a highly similar protein are sterile and have morphologically abnormal sperm. [provided by RefSeq, Jan 2012]

Product images:



Circular map for RG205564