

## Product datasheet for **RG205559**

### **KBTBD7 (NM\_032138) Human Tagged ORF Clone**

#### **Product data:**

Product Type:	Expression Plasmids
Product Name:	KBTBD7 (NM_032138) Human Tagged ORF Clone
Tag:	TurboGFP
Symbol:	KBTBD7
Mammalian Cell Selection:	Neomycin
Vector:	pCMV6-AC-GFP (PS100010)
E. coli Selection:	Ampicillin (100 ug/mL)



[View online »](#)

**ORF Nucleotide Sequence:**

>RG205559 representing NM\_032138  
 Red=Cloning site Blue=ORF Green=Tags(s)

TTTTGTAATACGACTCACTATAGGGCGGCCGGGAATTCGTCGACTGGATCCGGTACCGAGGAGATCTGCC  
 GCC**CGCATCGCC**

ATGCAGTCCCAGGAGACGTCCCGCCTCTCGCCGCTCGCCAGTCCCCGTGGTGGGAGGCGGCCAAGA  
 GGATTTCCAAGCCCTCGGTTTCGGCCTTTTTCACGGGTCCAGAGGAGTTAAAGGACACGGCCATTCTGC  
 AGCCCTGCTGGCACAGCTCAAGTCTTCTACGACGCGCGGCTGCTGTGTGATGTGACCATCGAGGTGGT  
 ACGCCTGGCAGCGGGCCTGGCACGGGTGCGCTCTTTTCTGCAATCGCAACGTGCTAGCAGCTGCGTGT  
 CCTACTTCAAGAGCATGTTACAGGTGGCATGTACGAGAGCCAGCAGGCCAGCGTGACCATGCACGATGT  
 GGACGCCGAGTCTTTCGAGGTGTTGGTCGACTACTGCTACACGGGTGCTGTGTCTCTCAGTGAGGCCAAT  
 GTGCAGCGCCTGTACGCGGCCCTCCGACATGCTACAGCTGGAATATGTGCGGGAAGCCTGTGCCTCCTTCT  
 TAGCCCGACGCTTGACCTGACCAACTGCACCGCCATCCTCAAGTTTGCAGACGCCTTCGACCATCACAA  
 GCTTCGATCTCAGGCCAGTCTACATAGCTCACAACTTCAAGCAGCTCAGCCGAATGGGTTCAATTCCGG  
 GAGGAGACTCTAGCAGATCTAACCTGGCCAGCTGCTGGCTGTCTACGCCTGGATAGTCTGGACATAG  
 AGAGTGAGCGGACTGTATGCCATGTAGCTGTGCAGTGGCTGGAGGCTGCTGCCAAAGAGCGGGTCCAG  
 TGCTGCAGAAGTCTTCAAGTGCCTGCGCTGGATGCACTTCACTGAAGAAGATCAGGACTACTTAGAAGGG  
 CTGCTGACCAAGCCCATCGTGAAGAAGTACTGCCTGGACGTTATTGAAGGGGCCCTGCAGATGCGCTATG  
 GTGACCTGTTGTACAAGTCTCTGGTGCCAGTGCCAAACAGCAGCAGCAGCAGTAGCAGCAGCAACTCTCT  
 TGTATCTGCAGCAGAAAAATCCACCCAGAGACTGGGTAATGTGTGCCAAGGAGATGGTGATCTTCTTTGGA  
 CATCCTAGAGATCCCTTCTCTGCTATGACCCTTACTCGGGGGACATTTACAAATGCCATCCCTTTTGA  
 CCAGCTTTGCTCACACTAAGACTGTACCTCCTCAGCTGTCTGTGTGTCCTCCAGACCATGCATCTATCT  
 AGCTGCTCAGCCAGGAAAGACCTCTGGGTGTATAAACCAGCTCAGAATAGTTGGCAGCAACTTGCAGAT  
 CGCTTGCTGTGCTGAGGGCATGGATGTGGCATATCTCAATGGCTACATCTACATTTTGGGGGACGAG  
 ACCCTATTACTGGAGTTAAGTTGAAGGAAGTGAATGCTACAGTGTTCAGAGAAACCAGTGGGCATTGGT  
 GGCTCCTGTCCCTCATTCTTCTATTCTTTGAACTCATAGTGGTTCAGAACTATCTTTATGCTGTCAAC  
 AGTAAGCGCATGCTTTGCTATGATCCTAGCCACAATATGTGGCTGAACTGTGCTTCTTTAAACGTAGTG  
 ACTTTAGGAAGCATGTGCTTCAATGATGAAATCTATTGTATCTGTGACATCCCAGTCTGAAGGTCTA  
 CAACCCAGCTAGGGGAGAATGGAGGCGGATTAGTAATATTCCTTTGGATTCAGAGACCCACAACCTACCAG  
 ATTGTC AATCATGACAAAAGTTGCTTCTCATCACTTCTACAACCCACAATGAAAAAGAACCGAGTGA  
 CAGTGTATGAGTATGATACTAGGGAAGATCAGTGGATTAATATAGGTACCATGTTAGGCCTTTTGCAGTT  
 TGA CTCTGGCTTTATTTGCCTTTGTGCTCGTGTATCCTTCTGCCTTGAACCTGGTCAGAGTTTTATT  
 ACTGAGGAAGATGATGCACGGAGTGAGTCTAGTACTGAATGGGACTTAGATGGATTAGTGTGAGTGGACT  
 CTGAGTCAAGGATTCAGTTCTTTTTCAGATGATGAAGTCTGGGTGCAAGTAGCACCTCAGCGAAATGC  
 ACAGGATCAGCAGGGTCTTTG

**ACGCGT**ACGCGGCCGCTCGAG - GFP Tag - GTTTAA

**Protein Sequence:** >RG205559 representing NM\_032138  
Red=Cloning site Green=Tags(s)

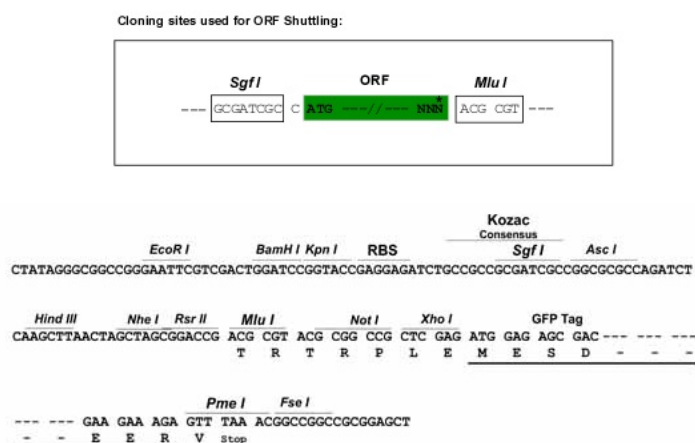
```

MQSREDVPRSRRLASPRGGRRPKRISKPSVSAFFTGPPELKDTHSAALLAQLKSFYDARLLCDVTIEVV
TPGSGPGTGRLFSCNRNVLAAACPYFKSMFTGGMYESQQASVTMHDVDAESFEVLVDYCYTGRVSLSEAN
VQRLYAASDMLQLEYVREACASFARRLDLTNCTAILKFADAFDHHKLRSAQSYIAHNFKQLSRMGSIR
EETLADLTLAQLLAVLRDLSLDIESERTVCHVAVQWLEAAAKERGPSAAEVFKCVRWMHFTEEDQDYLEG
LLTKPIVKKYCLDVIIEGALQMRYGDLLYKSLVPVNSSSSSSSSNSLVSAENPPQRLGMCAKEMVIFFG
HPRDPFLCYDPYSGDIYTMSPLTSFAHTKTVTSSAVCVSPDHDIYLAAPRKDLWVYKPAQNSWQQLAD
RLLCREGMDVAYLNGYIYILGGRDPITGVKLKEVECYSVQRNQWALVAPVPHSFYSFELIVVQNYLYAVN
SKRMLCYDP SHNMLNCA SLKRSD FQEACVFNDEIYICICDIPVMKVYNPARGEWRRISNIPLDSETHNYQ
IVNHDQKLLLITSTTPQWKKNRVTVYEYDTREDQWINIGTMLGLLQFDSGFIICLCARVYPSCLEPGQSFI
TEEDDARSESSTEWDLDGFSELDSESGSSSSFSDDEVVWQVAPQRNAQDQQGSL
    
```

TRTRPLE - GFP Tag - V

**Restriction Sites:** SgfI-MluI

**Cloning Scheme:**



**ACCN:** NM\_032138

**ORF Size:** 2052 bp

**OTI Disclaimer:** The molecular sequence of this clone aligns with the gene accession number as a point of reference only. However, individual transcript sequences of the same gene can differ through naturally occurring variations (e.g. polymorphisms), each with its own valid existence. This clone is substantially in agreement with the reference, but a complete review of all prevailing variants is recommended prior to use. [More info](#)

**OTI Annotation:** This clone was engineered to express the complete ORF with an expression tag. Expression varies depending on the nature of the gene.

**Components:** The ORF clone is ion-exchange column purified and shipped in a 2D barcoded Matrix tube containing 10ug of transfection-ready, dried plasmid DNA (reconstitute with 100 ul of water).

**Reconstitution Method:**

1. Centrifuge at 5,000xg for 5min.
2. Carefully open the tube and add 100ul of sterile water to dissolve the DNA.
3. Close the tube and incubate for 10 minutes at room temperature.
4. Briefly vortex the tube and then do a quick spin (less than 5000xg) to concentrate the liquid at the bottom.
5. Store the suspended plasmid at -20°C. The DNA is stable for at least one year from date of shipping when stored at -20°C.

**RefSeq:** [NM\\_032138.7](#)

**RefSeq Size:** 3009 bp

**RefSeq ORF:** 2055 bp

**Locus ID:** 84078

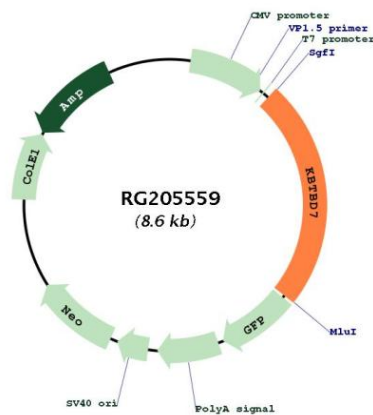
**UniProt ID:** [Q8WVZ9](#)

**Cytogenetics:** 13q14.11

**Domains:** BTB, Kelch

**Gene Summary:** The protein encoded by this gene is a transcriptional activator, having been shown to increase the transcription of activator protein-1 and serum response element. The encoded protein can also form a complex with KBTBD6 and CUL3, which regulates the ubiquitylation and degradation of TIAM1, which is a regulator of RAC1. [provided by RefSeq, Jul 2016]

**Product images:**



Circular map for RG205559