

Product datasheet for **RG205552**

Choline dehydrogenase (CHDH) (NM_018397) Human Tagged ORF Clone

Product data:

Product Type:	Expression Plasmids
Product Name:	Choline dehydrogenase (CHDH) (NM_018397) Human Tagged ORF Clone
Tag:	TurboGFP
Symbol:	CHDH
Mammalian Cell Selection:	Neomycin
Vector:	pCMV6-AC-GFP (PS100010)
E. coli Selection:	Ampicillin (100 ug/mL)



[View online »](#)

ORF Nucleotide Sequence:

>RG205552 representing NM_018397
 Red=Cloning site Blue=ORF Green=Tags(s)

TTTTGTAATACGACTCACTATAGGGCGGCCGGGAATTCGTCGACTGGATCCGGTACCGAGGAGATCTGCC
 GCC**GCGATCGCC**

ATGTGGTGTCTCCTACGAGGCCTGGGCCGGCTGGAGCCCTGGCACGGGGAGCCCTGGGGCAGCAGCAAT
 CCCTGGGTGCCCGGCCCTGGCCAGCGCAGGCTCTGAGAGCCGGGACAGTACAGCTATGTGGTGGTGGG
 CGCGGGCTCGGGGGCTGCGTGTGGTGGGAGGCTCACGGAGGACCCCGCCGAGCGCTGCTGCTGCTG
 GAGGCCGGGCCAAGGACGTGCGCGGGGAGCAAGCGGCTCTCGTGGAAGATCCACATGCCCGCGGCC
 TGGTGGCCAACCTGTGCGACGACAGGTACAAGTGGTGTACCACACAGAGGTGCAGCGGGCCCTGGACGG
 CCGCGTGTACTGGCCAGCGGCCGCTGTTGGGTGGTCTCATCCCTCAATGCCATGGTCTACGTC
 CGTGGGCACGCCGAGGACTACGAGCGTGGCAGCGCCAGGGCGCCCGGGCTGGGACTACGCGACTGCC
 TGCCCTACTTCCGAAGGCGCAGGGCCACGAGCTGGGCGCCAGCCGGTACCGGGGCGCCGATGGCCCGCT
 GCGGGTGTCCCGGGCAAGACCAACCACCGCTGCACTGCGCATTCTGGAGGCCACGCAGCAGGGCCGGC
 TACCCGCTCACCGAGGACATGAATGGCTTCCAGCAGGAGGGCTTCGGCTGGATGGACATGACCATCCATG
 AAGGCAAACGGTGGAGCGCAGCCTGTGCCTACCTGCACCCAGCACTGAGCCGCACCAACCTCAAGGCCGA
 GGCCGAGACGCTTGTGAGCAGGGTCTATTTGAGGGCACCCGTGCAGTGGGCGTGGAGTATGTCAAGAAT
 GGCCAGAGCCACAGGGCTTATGCCAGCAAGGAGGTGATTCTGAGTGGAGGTGCCATCAACTCTCCACAGC
 TGCTCATGCTCTCTGGCATCGGGAATGTGATGACCTCAAGAACTGGGCATCCCTGTGGTGTGCCACCT
 ACCTGGGTTGGCCAGAACCCTGCAAGACCCTGGAGATCTACATTCAGCAGGCATGCACCCGCCATC
 ACCCTCCATTAGCACAGAAGCCCTGCGGAAGGTCTGCATTGGTCTGGAGTGGCTCTGGAATTCACAG
 GGGAGGGAGCCACTGCCCATCTGGAACAGGTGGGTTCCATCCGACGCCAGCCTGGGGTCCCCACCCGGA
 CATCCAGTTCATTTCTGCCATCCCAAGTGATTGACCAGGGCGGGTCCCCACCCAGCAGGAGGCTTAC
 CAGGTACATGTGGGGCCATGCGGGGCACGAGTGTGGGCTGGCTCAAACCTGAGAAGTGCCAAATCCCCAAG
 ACCACCTGTGATCCAGCCCACTACTGTCAACAGAACTGATATTGAGGATTTCCGTCTGTGTGTGAA
 GCTCACAGAGAAATTTTGCACAGGAAGCCCTGGCTCCGTTCCGAGGAAAGAGCTCCAGCCAGGAAGC
 CACATTCAGTCAGATAAAGAGATAGATGCCTTTGTGCGGGCAAAGCCGACAGCGCTACCACCCCTCGT
 GCACCTGTAAGATGGCCAGCCCTCCGATCCCACTGCCGTGGTGGATCCGCAGACAAGGGTCTCGGGGT
 GGAAAACCTCAGGGTCTCGATGCCTCCATCATGCCTAGCATGGTCAGCGGCAACCTGAACGCCCCAC
 ATCATGATCGCAGAGAAGGCAGCTGACATTATCAAGGGCAGCCTGCACTCTGGGACAAAGATGTCCCTG
 TCTACAAGCCAGGACGCTGGCCACCCAGCGC

ACGCGTACGCGGGCCGCTCGAG - GFP Tag - GTTTAA

Protein Sequence:

>RG205552 representing NM_018397
 Red=Cloning site Green=Tags(s)

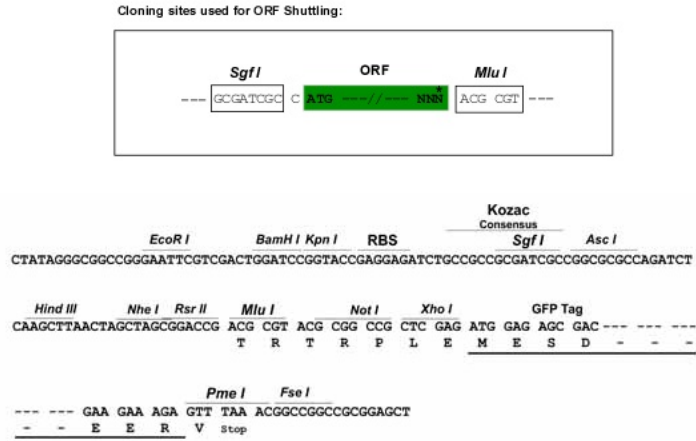
MWCLLRGLGRPGALARGALGQQQSLGARALASAGSESRDEYSYVVVVGAGSAGCVLAGRLTEDPAERVLLL
 EAGPKDVRAGSKRLSWKIHMPAALVANLCDDRYNWCYHTEVQRGLDGRVLYWPRGRVWGGSSSLNAMVYV
 RGHAEYERWQRQARGWDYAHCLPYFRKAQGHGELGASRYRGADGPLRVSRGKTNHPLHCAFLEATQQAG
 YPLTEDMNGFQQEGFGWMDMTIHEGKRWSAACAYLHPALSRNLKAEATLVSRLFEGTRAVGVEYVKN
 GQSHRAYASKEVILSGGAINSPQLMLSGIGNADDLKKLGIPVCHLPGVGNLQDHLIYIQQACTRPI
 TLHSAQKPLRKVICIGLEWLWKFTGEGATAHLETGGFIRSQPGVPHPIQFHFLPSQVIDHGRVPTQQEAY
 QVHVGPMRGTSVGWLKLRANPQDHPVVIQPNYLSTETDIEDFRLCVKLTREIFAQEALAPFRGKELQPGS
 HIQSDKEIDAFVRAKADSAYHPSCTCKMGQPSDPTAVVDPQTRVLGVENLRVVDASIMPSMVSGNLNAPT
 IMIAEKAADIKQPALWDKDVVYKPRTLATQR

TRTRPLE - GFP Tag - V

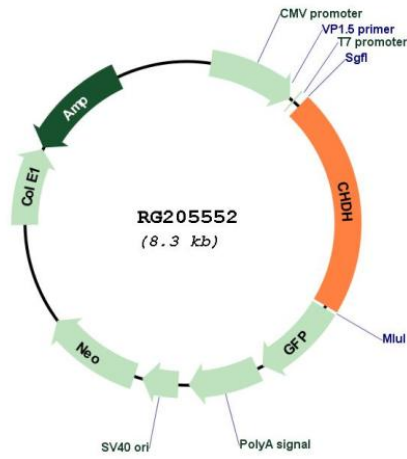
Restriction Sites:

Sgfl-MluI

Cloning Scheme:



Plasmid Map:



ACCN:

NM_018397

ORF Size:	1782 bp
OTI Disclaimer:	The molecular sequence of this clone aligns with the gene accession number as a point of reference only. However, individual transcript sequences of the same gene can differ through naturally occurring variations (e.g. polymorphisms), each with its own valid existence. This clone is substantially in agreement with the reference, but a complete review of all prevailing variants is recommended prior to use. More info
OTI Annotation:	This clone was engineered to express the complete ORF with an expression tag. Expression varies depending on the nature of the gene.
Components:	The ORF clone is ion-exchange column purified and shipped in a 2D barcoded Matrix tube containing 10ug of transfection-ready, dried plasmid DNA (reconstitute with 100 ul of water).
Reconstitution Method:	<ol style="list-style-type: none">1. Centrifuge at 5,000xg for 5min.2. Carefully open the tube and add 100ul of sterile water to dissolve the DNA.3. Close the tube and incubate for 10 minutes at room temperature.4. Briefly vortex the tube and then do a quick spin (less than 5000xg) to concentrate the liquid at the bottom.5. Store the suspended plasmid at -20°C. The DNA is stable for at least one year from date of shipping when stored at -20°C.
RefSeq:	NM_018397.2
RefSeq Size:	2162 bp
RefSeq ORF:	1785 bp
Locus ID:	55349
UniProt ID:	Q8NE62
Cytogenetics:	3p21.1
Protein Pathways:	Glycine, serine and threonine metabolism
Gene Summary:	The protein encoded by this gene is a choline dehydrogenase that localizes to the mitochondrion. Variations in this gene can affect susceptibility to choline deficiency. A few transcript variants have been found for this gene, but the full-length nature of only one has been characterized to date. [provided by RefSeq, Dec 2010]