

Product datasheet for **RG205518**

C2orf65 (M1AP) (NM_138804) Human Tagged ORF Clone

Product data:

Product Type:	Expression Plasmids
Product Name:	C2orf65 (M1AP) (NM_138804) Human Tagged ORF Clone
Tag:	TurboGFP
Symbol:	M1AP
Synonyms:	C2orf65; D6Mm5e; SPATA37; SPGF48
Mammalian Cell Selection:	Neomycin
Vector:	pCMV6-AC-GFP (PS100010)
E. coli Selection:	Ampicillin (100 ug/mL)



[View online »](#)

ORF Nucleotide Sequence:

>RG205518 representing NM_138804
 Red=Cloning site Blue=ORF Green=Tags(s)

TTTTGTAATACGACTCACTATAGGGCGGCCGGAATTCGTGACTGGATCCGGTACCGAGGAGATCTGCC
 GCC**CGGATCGCC**

ATGCATCCTGGGCGAACTACTGGTAAAGGGCCCTCTACTCACACTCAGATTGACCAGCAACCTCCACGGC
 TTCTCATTGTGCACATTGCTCTACCGTCTGGGCTGACATCTGCACCAACCTCTGTGAGGCTCTGCAGAA
 CTTCTTCTCTAGCCTGCAGCTTGATGGGCCAGCCGATGTCCCTGTTCAAGTTTATACATGGTACAA
 GATCAGCATGAGTGCATCCTCCCTTTTGTGCAAGTGAAAGGGAACCTTTGCTAGGTTGCAGACCTGCATCT
 CAGAACTCCGCATGTTACAGAGAGAAGGGTGTTCAGATCACAAGGTGCTTCTCTGCGGCTGGCAGTAGA
 GGATGGGCTCCAGCAATCAAACAATACAGCAGACATGTGACCACAAGGGCAGCTCTGACCTATACCTCC
 CTGGAGATTACTATTCTGACTTCTCAGCCTGGAAAAGAGGTGGTCAAACAGTTGGAGGAAGGGTTGAAAG
 ATACAGACCTAGCCAGAGTCAGGAGTTTCAGGTCGTTGAGGTCACAAAGGGAATCTAGAGCACGTGGA
 CTCAGCGTCTCCTGTTGAGGATACCAGCAATGATGAGAGTTCTATTCTGGGAACTGACATTGACCTTCAG
 ACTATAGACAATGATATCGTCAGCATGGAGATTTCTTCAAAGCCTGGCTACATAACAGTGGAAACAGACC
 AAGAACAATCCATCTTCTTCTTCTTTCACAGTGTTCAGCAACATTTCCAGACCCAGAGATAATCCAAT
 GTGTCTGAAATGTGATCTCCAAGAGCGACTGCTCTGCCATCCCTACTCGCTGGCACAGCTGACGGCTCC
 TTGAGAATGGATGACCCTAAAGGAGACTTCATCACACTCTACCAGATGGCTTCCCAGTCATCGGCCCTCTC
 ATTACAAGCTCCAAGTGATCAAGGCTTTAAAATCTAGCGGGCTCTGCGAGTCATTGACATATGGACTCCC
 GTTCATCCTCAGACCTACAAGCTGTTGGCAGCTGGACTGGGATGAGCTGGAGACAAATCAGCAACATTTCC
 CATGCTTTGTGTACAGCCTGCTGAAAAGGGAATGGCTGCTGTTAGCCAAGGGGGAACACCGGGCCAG
 GACACAGCCAGAGAATTCCTGCCAGCACCTTCTATGTGATCATGCCGTCACACTCCCTCACACTGTGGT
 AAAGGCGGTGGCCACGCGGGAACCTGATGCTGCCACAGCACCTTCCCCTGCTACCTGAGGACCCACATGAT
 GATAGCCTTAAGAATGTGGAGAGCATGCTGGACAGCCTGGAGCTGGAGCCACCTACAACCCTTGCATG
 TTCAAAGCCACCTGTACTIONCACACTGAGCAGCATCTATGCCAAGCCTCAGGGGCGGCTCCACCCACACTG
 GGAGAGCCGAGCTCCGAGAAAGCATCCCTGCAAGACTGGGCGAGTTGCAGACCAACCGAGCTCGAGCTACT
 GTGGCCCCCTGCCTATGACTCCTGTCCAGGCAGAGCCTCCAAGATGCCAGCAGCCAGCAATCTTCTCT
 CAGATGCCTTCTCTGCCTTCAGAGTGGGAGAAGGATCCCTCAAGGCC

ACGCGTACGCGGCCGCTCGAG - GFP Tag - GTTTAA

Protein Sequence:

>RG205518 representing NM_138804
 Red=Cloning site Green=Tags(s)

MHPGRTTGKGPSTHTQIDQQPPRLLIVHIALPSWADICTNLCEALQNFFSLACSLMGPSRMSLFSLYMVQ
 DQHECILPFVQVKGNFARLQTCISELRMLQREGCFRSQASLRLAVEDGLQQFKQYSRHVTTRAALTYTS
 LEITILTSQPGKEVVKQLEEGLKDTDLARVRRFQVVEVTKGILEHVDSASPVEDTSNDESSILGTDIDLQ
 TIDNDIVSMEIFFKAWLHNSGTDQEQIHLLSSQCFSNISRPRDNPMLKCDLQERLLCPSLLAGTADGS
 LRMDDPKGDFITLYQMASQSSASHYKLQVIKALKSSGLCESLTYGLPFILRPTSCWQLDWELETNQQHF
 HALCHSLKREWLLAKGEPGPGHSQRIPASTFYVIMPESHLLLVKAVATREMLPSTFPLLPEDPHD
 DSLKNVESMLDSLELEPTYNPLHVQSHLYSHLSSIIYAKPQGRLLHPHWESRAPRKHPCKTGQLQTNRARAT
 VAPLPMTPVPGRASKMPAASKSSSDAFLPSEWEKDPSRP

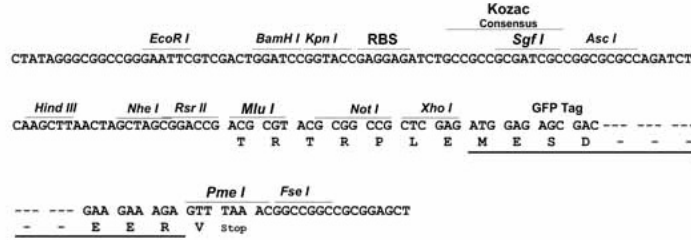
TRTRPLE - GFP Tag - V

Restriction Sites:

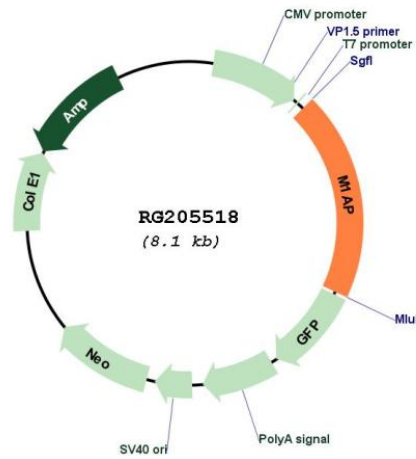
Sgfl-Mlul

Cloning Scheme:

Cloning sites used for ORF Shutting:



Plasmid Map:



ACCN:	NM_138804
ORF Size:	1590 bp
OTI Disclaimer:	The molecular sequence of this clone aligns with the gene accession number as a point of reference only. However, individual transcript sequences of the same gene can differ through naturally occurring variations (e.g. polymorphisms), each with its own valid existence. This clone is substantially in agreement with the reference, but a complete review of all prevailing variants is recommended prior to use. More info
OTI Annotation:	This clone was engineered to express the complete ORF with an expression tag. Expression varies depending on the nature of the gene.
Components:	The ORF clone is ion-exchange column purified and shipped in a 2D barcoded Matrix tube containing 10ug of transfection-ready, dried plasmid DNA (reconstitute with 100 ul of water).
Reconstitution Method:	<ol style="list-style-type: none">1. Centrifuge at 5,000xg for 5min.2. Carefully open the tube and add 100ul of sterile water to dissolve the DNA.3. Close the tube and incubate for 10 minutes at room temperature.4. Briefly vortex the tube and then do a quick spin (less than 5000xg) to concentrate the liquid at the bottom.5. Store the suspended plasmid at -20°C. The DNA is stable for at least one year from date of shipping when stored at -20°C.
RefSeq:	NM_138804.4
RefSeq Size:	2561 bp
RefSeq ORF:	1593 bp
Locus ID:	130951
UniProt ID:	Q8TC57
Cytogenetics:	2p13.1
Gene Summary:	This gene encodes a protein that is likely to function in progression of meiosis. A similar protein in mouse plays a role in gametogenesis in both sexes. Alternate splicing results in multiple transcript variants encoding different isoforms. [provided by RefSeq, Jul 2013]